

**Table 1: Sandoval County, NM Community Development Goal Rankings**

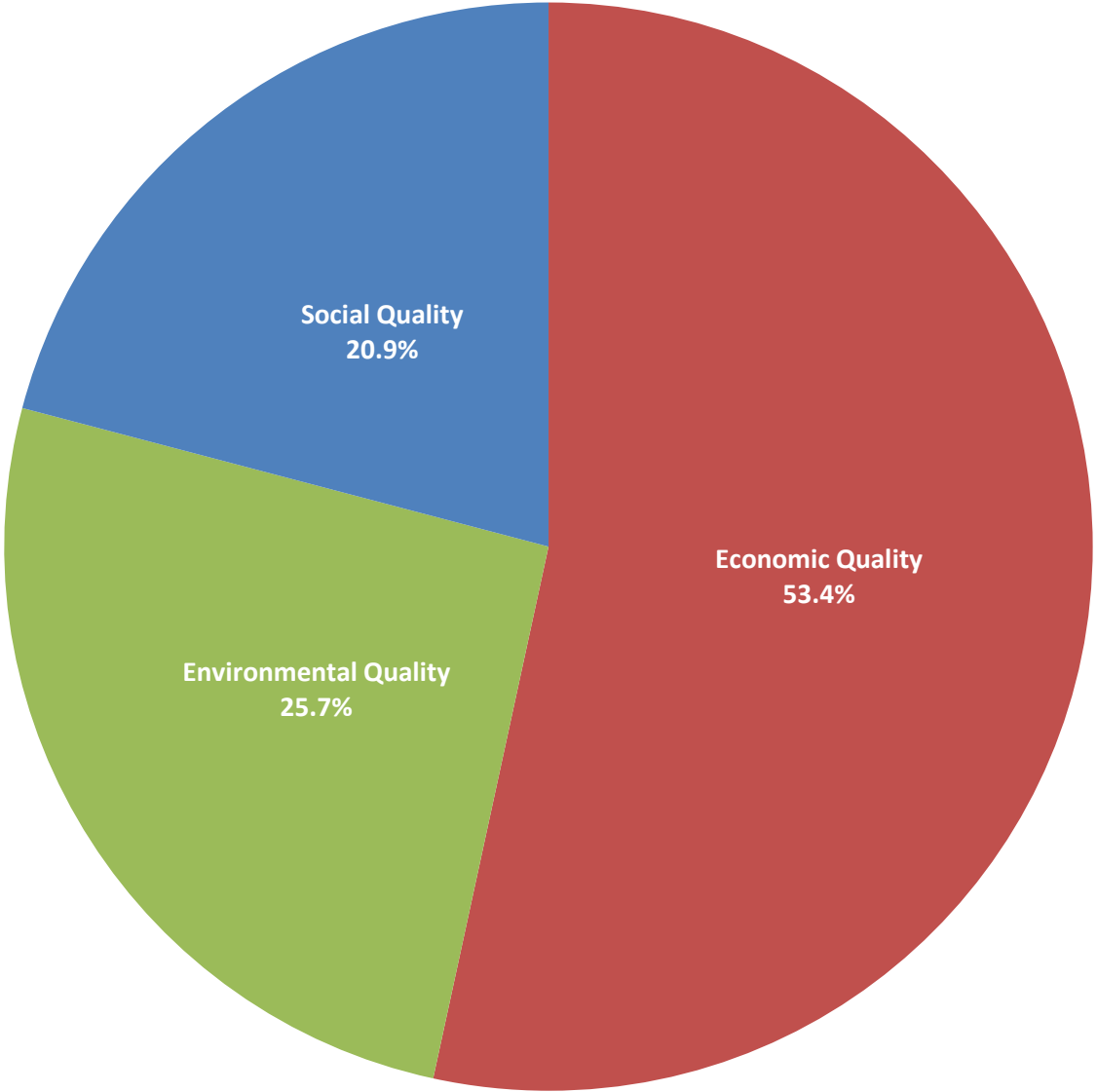
<i>Goal</i>	<i>Weight</i>	<i>Rank</i>
Economic Quality	53.40%	1
Environmental Quality	25.70%	2
Social Quality	20.90%	3

**Table 2: Community Development Indicator Rankings**

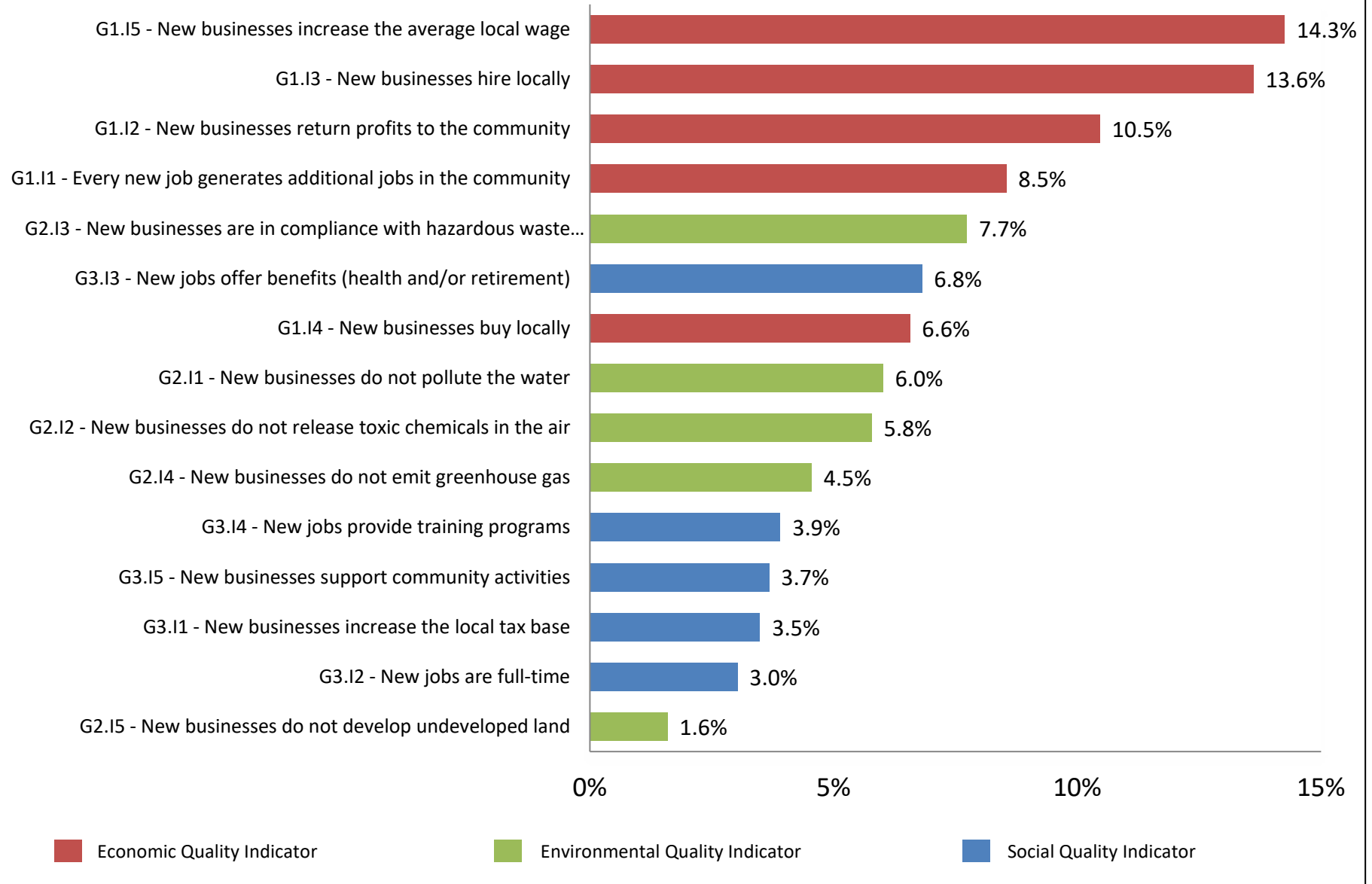
<i>Indicator</i>	<i>Weight</i>	<i>Rank</i>
G1.I1 - Every new job generates additional jobs in the community	8.54%	4
G1.I2 - New businesses return profits to the community	10.47%	3
G1.I3 - New businesses hire locally	13.62%	2
G1.I4 - New businesses buy locally	6.57%	7
G1.I5 - New businesses increase the average local wage	14.26%	1
G2.I1 - New businesses do not pollute the water	6.01%	8
G2.I2 - New businesses do not release toxic chemicals in the air	5.78%	9
G2.I3 - New businesses are in compliance with hazardous waste management	7.74%	5
G2.I4 - New businesses do not emit greenhouse gas	4.55%	10
G2.I5 - New businesses do not develop undeveloped land	1.59%	15
G3.I1 - New businesses increase the local tax base	3.49%	13
G3.I2 - New jobs are full-time	3.03%	14
G3.I3 - New jobs offer benefits (health and/or retirement)	6.81%	6
G3.I4 - New jobs provide training programs	3.91%	11
G3.I5 - New businesses support community activities	3.68%	12

Number of observations	13
------------------------	----

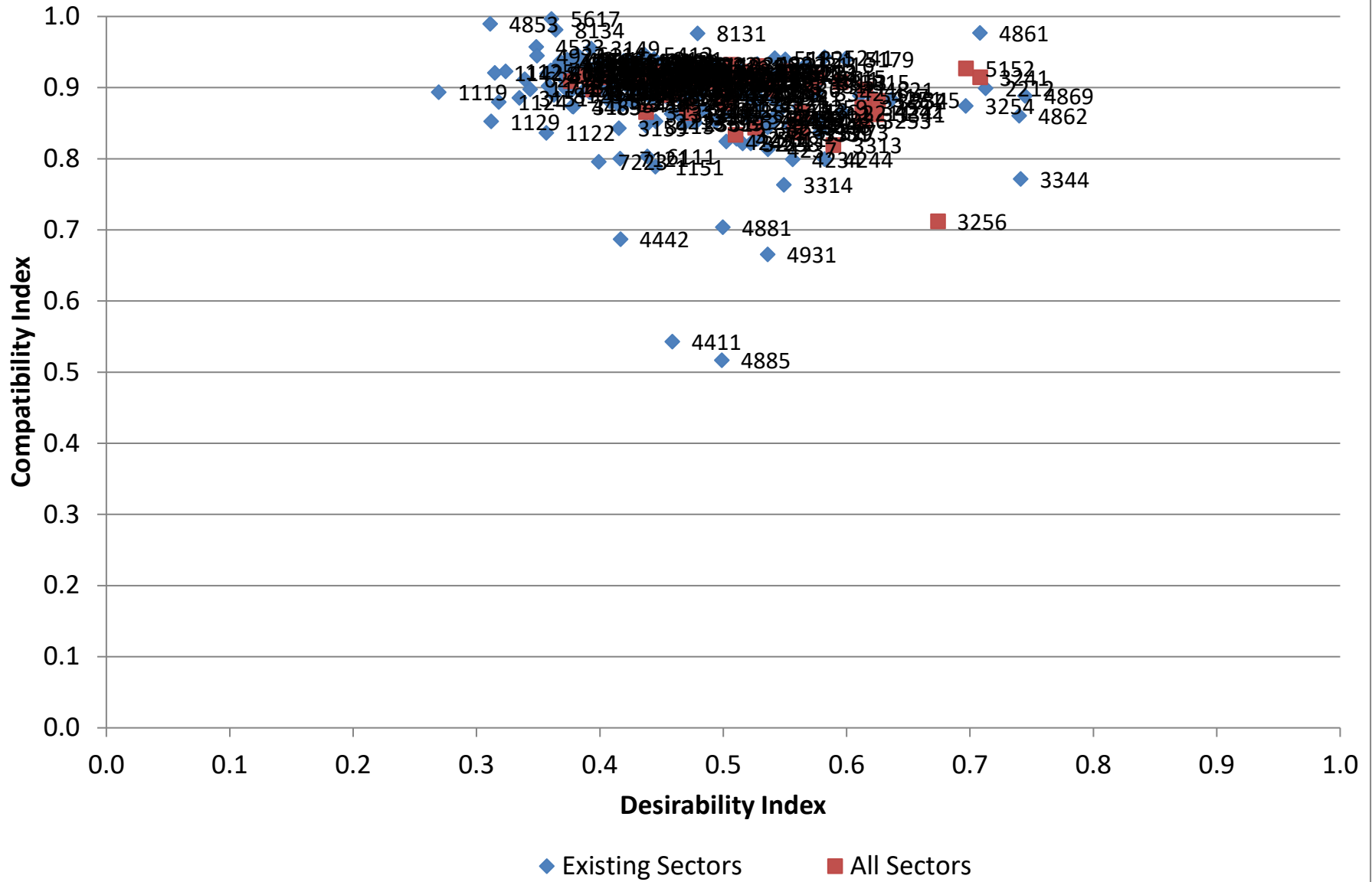
**Figure 1: Community Development Goal Weights:  
Sandoval County, NM**



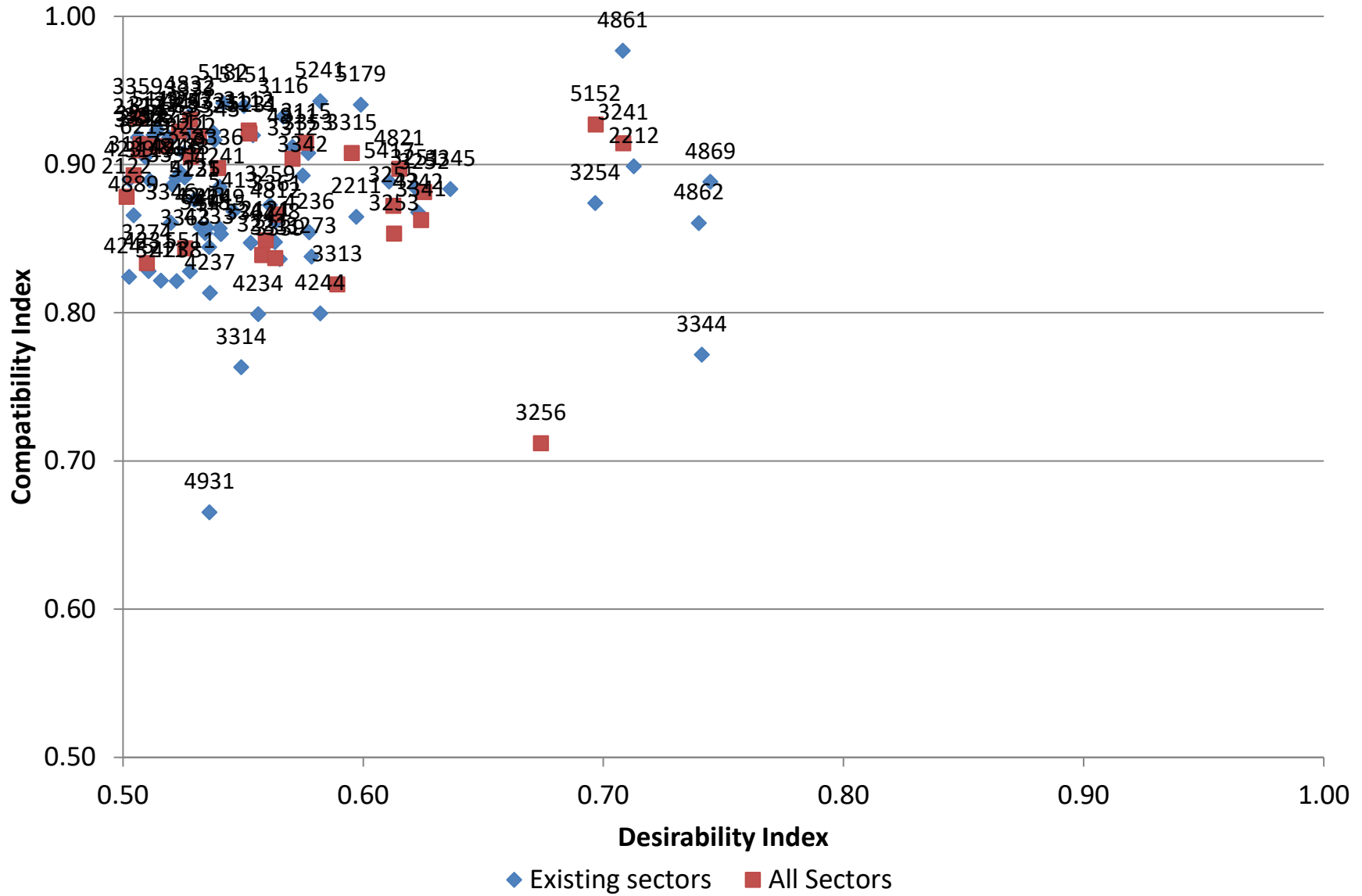
**Figure 2: Community Development Indicator Weights:  
Sandoval County, NM**



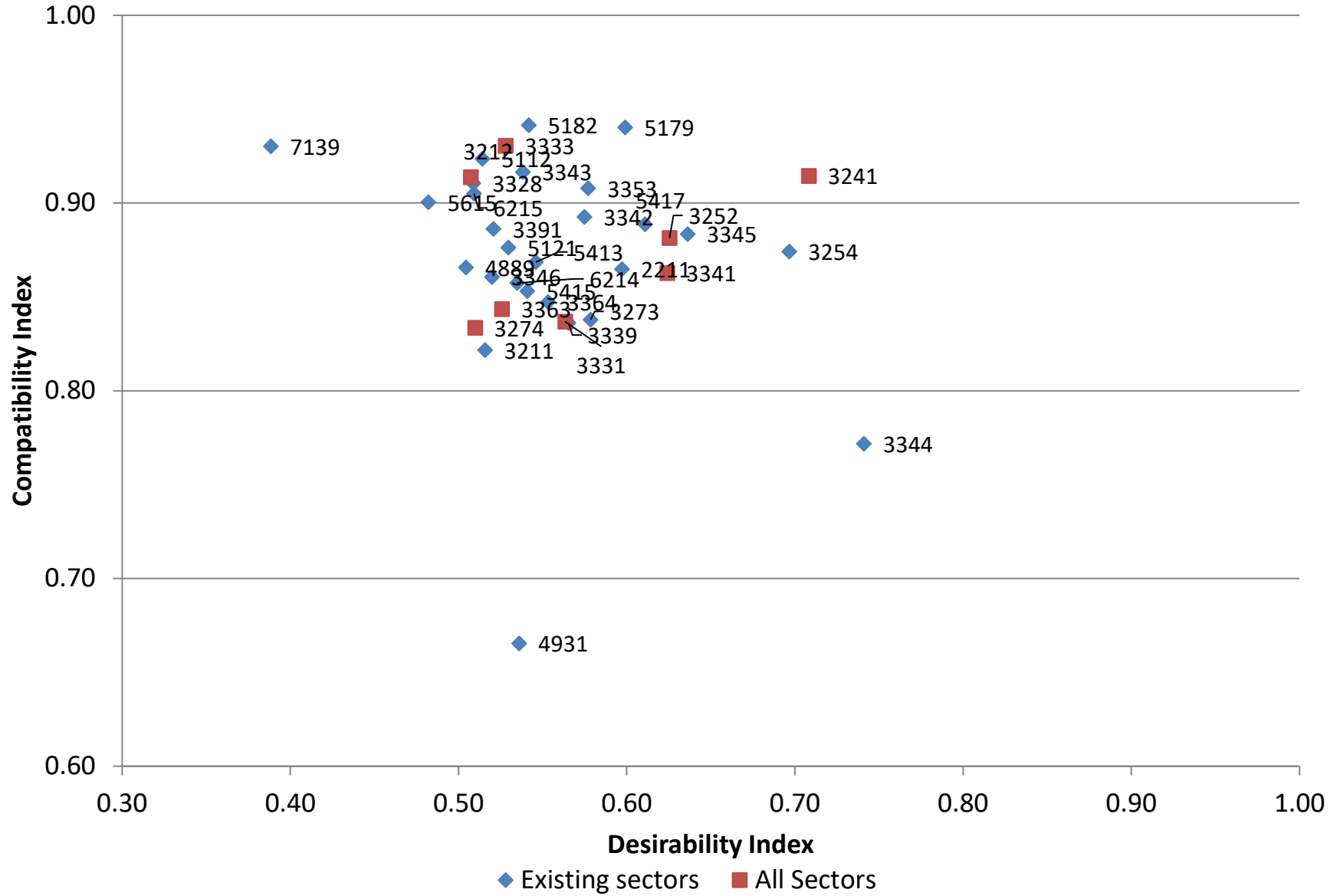
**Figure 3: Sandoval County, NM ASAP Results**  
**All NAICS**



**Figure 4: Sandoval County, NM ASAP Results**  
**High Index NAICS**



**Figure 5: Sandoval County, NM ASAP Results**  
**Target NAICS**



**Table 3: Industries with High Desirability and Compatibility Index Scores ( Index > .50)**

NAICS4	Description	Existing	DI	CI
4861	Pipeline Transportation of Crude Oil	X	0.7081	0.9768
5241	Insurance Carriers	X	0.5821	0.9427
5182	Data Processing, Hosting, and Related Services	X	0.5417	0.9415
5179	Other Telecommunications	X	0.5990	0.9403
5151	Radio and Television Broadcasting	X	0.5504	0.9396
4832	Inland Water Transportation	X	0.5277	0.9332
3116	Animal Slaughtering and Processing	X	0.5667	0.9322
3359	Other Electrical Equipment and Component Manufacturing		0.5061	0.9320
3333	Commercial and Service Industry Machinery Manufacturing		0.5280	0.9304
5152	Cable and Other Subscription Programming		0.6968	0.9270
5112	Software Publishers	X	0.5142	0.9235
3112	Grain and Oilseed Milling		0.5523	0.9230
4247	Petroleum and Petroleum Products Merchant Wholesalers	X	0.5269	0.9229
3311	Iron and Steel Mills and Ferroalloy Manufacturing		0.5234	0.9225
5331	Lessors of Nonfinancial Intangible Assets (except Copyrighted Works)	X	0.5375	0.9217
3113	Sugar and Confectionery Product Manufacturing		0.5527	0.9209
3122	Tobacco Manufacturing	X	0.5127	0.9199
5231	Securities and Commodity Contracts Intermediation and Brokerage	X	0.5541	0.9198
3332	Industrial Machinery Manufacturing		0.5316	0.9191
2123	Nonmetallic Mineral Mining and Quarrying	X	0.5062	0.9183
5173	Wired and Wireless Telecommunications Carriers	X	0.5192	0.9182
3343	Audio and Video Equipment Manufacturing	X	0.5382	0.9165
3115	Dairy Product Manufacturing		0.5762	0.9147
3241	Petroleum and Coal Products Manufacturing		0.7083	0.9144
3212	Veneer, Plywood, and Engineered Wood Product Manufacturing		0.5073	0.9137
3325	Hardware Manufacturing		0.5174	0.9124
3365	Railroad Rolling Stock Manufacturing		0.5109	0.9121
4811	Scheduled Air Transportation	X	0.5706	0.9120
3328	Coating, Engraving, Heat Treating, and Allied Activities	X	0.5088	0.9105
3322	Cutlery and Handtool Manufacturing		0.5067	0.9096
3315	Foundries		0.5953	0.9078
3353	Electrical Equipment Manufacturing	X	0.5771	0.9078
5111	Newspaper, Periodical, Book, and Directory Publishers	X	0.5254	0.9077
3222	Converted Paper Product Manufacturing		0.5283	0.9052
6215	Medical and Diagnostic Laboratories	X	0.5092	0.9050
3312	Steel Product Manufacturing from Purchased Steel		0.5706	0.9039
2212	Natural Gas Distribution	X	0.7127	0.8989
3336	Engine, Turbine, and Power Transmission Equipment Manufacturing		0.5396	0.8976
4821	Rail Transportation		0.6151	0.8972
5239	Other Financial Investment Activities	X	0.5239	0.8946
3117	Seafood Product Preparation and Packaging		0.5044	0.8928
3342	Communications Equipment Manufacturing	X	0.5748	0.8926
8133	Social Advocacy Organizations	X	0.5257	0.8912
4246	Chemical and Allied Products Merchant Wholesalers	X	0.5222	0.8910
4239	Miscellaneous Durable Goods Merchant Wholesalers	X	0.5026	0.8899
3119	Other Food Manufacturing	X	0.5111	0.8894
5417	Scientific Research and Development Services	X	0.6108	0.8886
4869	Other Pipeline Transportation	X	0.7446	0.8883
3391	Medical Equipment and Supplies Manufacturing	X	0.5207	0.8862
4241	Paper and Paper Product Merchant Wholesalers	X	0.5403	0.8850

**Table 3: Industries with High Desirability and Compatibility Index Scores ( Index > .50)**

NAICS4	Description	Existing	DI	CI
3251	Basic Chemical Manufacturing	X	0.6218	0.8841
3345	Navigational, Measuring, Electromedical, and Control Instruments Manufacturing	X	0.6363	0.8834
3252	Resin, Synthetic Rubber, and Artificial and Synthetic Fibers and Filaments Manufacturing		0.6254	0.8814
2122	Metal Ore Mining		0.5015	0.8782
4235	Metal and Mineral (except Petroleum) Merchant Wholesalers	X	0.5301	0.8764
5121	Motion Picture and Video Industries	X	0.5296	0.8762
3254	Pharmaceutical and Medicine Manufacturing	X	0.6966	0.8741
3259	Other Chemical Product and Preparation Manufacturing	X	0.5612	0.8727
3255	Paint, Coating, and Adhesive Manufacturing		0.6126	0.8721
5413	Architectural, Engineering, and Related Services	X	0.5460	0.8685
4242	Drugs and Druggists' Sundries Merchant Wholesalers	X	0.6229	0.8677
3361	Motor Vehicle Manufacturing		0.5640	0.8663
4889	Other Support Activities for Transportation	X	0.5044	0.8657
2211	Electric Power Generation, Transmission and Distribution	X	0.5971	0.8647
3341	Computer and Peripheral Equipment Manufacturing		0.6241	0.8626
4812	Nonscheduled Air Transportation	X	0.5635	0.8617
3346	Manufacturing and Reproducing Magnetic and Optical Media	X	0.5199	0.8606
4862	Pipeline Transportation of Natural Gas	X	0.7398	0.8605
4243	Apparel, Piece Goods, and Notions Merchant Wholesalers	X	0.5323	0.8578
6214	Outpatient Care Centers	X	0.5349	0.8574
4249	Miscellaneous Nondurable Goods Merchant Wholesalers	X	0.5402	0.8570
4236	Household Appliances and Electrical and Electronic Goods Merchant Wholesalers	X	0.5775	0.8542
5418	Advertising, Public Relations, and Related Services	X	0.5342	0.8537
3253	Pesticide, Fertilizer, and Other Agricultural Chemical Manufacturing		0.6129	0.8535
5415	Computer Systems Design and Related Services	X	0.5408	0.8531
2121	Coal Mining		0.5594	0.8489
4248	Beer, Wine, and Distilled Alcoholic Beverage Merchant Wholesalers	X	0.5633	0.8477
3364	Aerospace Product and Parts Manufacturing	X	0.5532	0.8472
4233	Lumber and Other Construction Materials Merchant Wholesalers	X	0.5359	0.8443
3363	Motor Vehicle Parts Manufacturing		0.5259	0.8435
3221	Pulp, Paper, and Paperboard Mills		0.5580	0.8389
3273	Cement and Concrete Product Manufacturing	X	0.5785	0.8379
3331	Agriculture, Construction, and Mining Machinery Manufacturing		0.5634	0.8368
3339	Other General Purpose Machinery Manufacturing	X	0.5653	0.8362
3274	Lime and Gypsum Product Manufacturing		0.5099	0.8335
4231	Motor Vehicle and Motor Vehicle Parts and Supplies Merchant Wholesalers	X	0.5107	0.8281
5511	Management of Companies and Enterprises	X	0.5279	0.8280
4245	Farm Product Raw Material Merchant Wholesalers	X	0.5025	0.8242
3211	Sawmills and Wood Preservation	X	0.5158	0.8217
4238	Machinery, Equipment, and Supplies Merchant Wholesalers	X	0.5223	0.8214
3313	Alumina and Aluminum Production and Processing		0.5892	0.8192
4237	Hardware, and Plumbing and Heating Equipment and Supplies Merchant Wholesalers	X	0.5362	0.8134
4244	Grocery and Related Product Merchant Wholesalers	X	0.5821	0.7996
4234	Professional and Commercial Equipment and Supplies Merchant Wholesalers	X	0.5563	0.7991
3344	Semiconductor and Other Electronic Component Manufacturing	X	0.7410	0.7717
3314	Nonferrous Metal (except Aluminum) Production and Processing	X	0.5492	0.7633
3256	Soap, Cleaning Compound, and Toilet Preparation Manufacturing		0.6740	0.7120
4931	Warehousing and Storage	X	0.5360	0.6654



**Table 4: Industries with High Desirability and Compatibility Index Scores ( Index > .50)**

NAICS3	Description	Count
212	Mining ( except Oil and Gas)	3
221	Utilities	2
311	Food Manufacturing	6
312	Beverage and Tobacco Product Manufacturing	1
321	Wood Product Manufacturing	2
322	Paper Manufacturing	2
324	Petroleum and Coal Products Manufacturing	1
325	Chemical Manufacturing	7
327	Nonmetallic Mineral Product Manufacturing	2
331	Primary Metal Manufacturing	5
332	Fabricated Metal Product Manufacturing	3
333	Machinery Manufacturing	5
334	Computer and Electronic Product Manufacturing	6
335	Electrical Equipment, Appliance, and Component Manufacturing	2
336	Transportation Equipment Manufacturing	4
339	Miscellaneous Manufacturing	1
423	Merchant Wholesalers, Durable Goods	8
424	Merchant Wholesalers, Nondurable Goods	9
481	Air Transportation	2
482	Rail Transportation	1
483	Water Transportation	1
486	Pipeline Transportation	3
488	Support Activities for Transportation	1
493	Warehousing and Storage	1
511	Publishing Industries	2
512	Motion Picture and Sound Recording Industries	1
515	Broadcasting	2
517	Telecommunications	2
518	Data Processing, Hosting, and Related Services	1
523	Securities, Commodity Contracts, and Other Financial Investments and Related Activities	2
524	Insurance Carriers and Related Activities	1
533	Lessors of Nonfinancial Intangible Assets	1
541	Professional, Scientific, and Technical Services	4
551	Management of Companies and Enterprises	1
621	the Ambulatory Health Care Services	2
813	Religious, Grantmaking, Civic, Professional, and Similar Organizations	1

**Table 5: Sandoval County, NM Target Industries**

NAICS4	Description	Existing	DI	CI
2211	Electric Power Generation, Transmission and Distribution	X	0.5971	0.8647
3211	Sawmills and Wood Preservation	X	0.5158	0.8217
3212	Veneer, Plywood and Engineered Product Manufacturing		0.5073	0.9137
3241	Petroleum and Coal Products Manufacturing		0.7083	0.9144
3252	Resin, Synthetic Rubber, and Artificial and Synthetic Fibers and Filaments Manufacturing		0.6254	0.8814
3254	Pharmaceutical and Medicine Manufacturing	X	0.6966	0.8741
3273	Cement and Concrete Product Manufacturing	X	0.5785	0.8379
3274	Lime and Gypsum Product Manufacturing		0.5099	0.8335
3328	Coating, Engraving, Heat Treating, and Allied Activities	X	0.5088	0.9105
3331	Agriculture, Construction, and Mining Machinery Manufacturing		0.5634	0.8368
3333	Commercial and Service Industry Machinery Manufacturing		0.5280	0.9304
3339	Other General Purpose Machinery Manufacturing	X	0.5653	0.8362
3341	Computer and Peripheral Equipment Manufacturing		0.6241	0.8626
3342	Communications Equipment Manufacturing	X	0.5748	0.8926
3343	Audio and Video Equipment Manufacturing	X	0.5382	0.9165
3344	Semiconductor and Other Electronic Component Manufacturing	X	0.7410	0.7717
3345	Navigational, Measuring, Electromedical, and Control Instruments Manufacturing	X	0.6363	0.8834
3346	Manufacturing and Reproducing Magnetic and Optical Media	X	0.5199	0.8606
3353	Electrical Equipment Manufacturing	X	0.5771	0.9078
3363	Motor Vehicle Parts Manufacturing		0.5259	0.8435
3364	Aerospace Product and Parts Manufacturing	X	0.5532	0.8472
3391	Medical Equipment and Supplies Manufacturing	X	0.5207	0.8862
4889	Other Support Activities for Transportation	X	0.5044	0.8657
4931	Warehousing and Storage	X	0.5360	0.6654
5112	Software Publishers	X	0.5142	0.9235
5121	Motion Picture and Video Industries	X	0.5296	0.8762
5179	Other Telecommunications	X	0.5990	0.9403
5182	Data Processing, Hosting, and Related Services	X	0.5417	0.9415
5413	Architectural, Engineering, and Related Services	X	0.5460	0.8685
5415	Computer Systems Design and Related Services	X	0.5408	0.8531
5417	Scientific Research and Development Services	X	0.6108	0.8886
5615	Travel Arrangement and Reservation Services	X	0.4821	0.9004
6214	Outpatient Care Centers	X	0.5349	0.8574
6215	Medical and Diagnostic Laboratories	X	0.5092	0.9050
7139	Other Amusement and Recreation Industries	X	0.3885	0.9302

**Table 6: Industries with High Desirability Index Scores (DI > .50)**

NAICS4	Description	Existing	DI	CI
4869	Other Pipeline Transportation	X	0.7446	0.8883
3344	Semiconductor and Other Electronic Component Manufacturing	X	0.7410	0.7717
4862	Pipeline Transportation of Natural Gas	X	0.7398	0.8605
2212	Natural Gas Distribution	X	0.7127	0.8989
3241	Petroleum and Coal Products Manufacturing		0.7083	0.9144
4861	Pipeline Transportation of Crude Oil	X	0.7081	0.9768
5152	Cable and Other Subscription Programming		0.6968	0.9270
3254	Pharmaceutical and Medicine Manufacturing	X	0.6966	0.8741
3256	Soap, Cleaning Compound, and Toilet Preparation Manufacturing		0.6740	0.7120
3345	Navigational, Measuring, Electromedical, and Control Instruments Manufacturing	X	0.6363	0.8834
3252	Resin, Synthetic Rubber, and Artificial and Synthetic Fibers and Filaments Manufacturing		0.6254	0.8814
3341	Computer and Peripheral Equipment Manufacturing		0.6241	0.8626
4242	Drugs and Druggists' Sundries Merchant Wholesalers	X	0.6229	0.8677
3251	Basic Chemical Manufacturing	X	0.6218	0.8841
4821	Rail Transportation		0.6151	0.8972
3253	Pesticide, Fertilizer, and Other Agricultural Chemical Manufacturing		0.6129	0.8535
3255	Paint, Coating, and Adhesive Manufacturing		0.6126	0.8721
5417	Scientific Research and Development Services	X	0.6108	0.8886
5179	Other Telecommunications	X	0.5990	0.9403
2211	Electric Power Generation, Transmission and Distribution	X	0.5971	0.8647
3315	Foundries		0.5953	0.9078
3313	Alumina and Aluminum Production and Processing		0.5892	0.8192
4244	Grocery and Related Product Merchant Wholesalers	X	0.5821	0.7996
5241	Insurance Carriers	X	0.5821	0.9427
3273	Cement and Concrete Product Manufacturing	X	0.5785	0.8379
4236	Household Appliances and Electrical and Electronic Goods Merchant Wholesalers	X	0.5775	0.8542
3353	Electrical Equipment Manufacturing	X	0.5771	0.9078
3115	Dairy Product Manufacturing		0.5762	0.9147
3342	Communications Equipment Manufacturing	X	0.5748	0.8926
3312	Steel Product Manufacturing from Purchased Steel		0.5706	0.9039
4811	Scheduled Air Transportation	X	0.5706	0.9120
3116	Animal Slaughtering and Processing	X	0.5667	0.9322
3339	Other General Purpose Machinery Manufacturing	X	0.5653	0.8362
3361	Motor Vehicle Manufacturing		0.5640	0.8663
4812	Nonscheduled Air Transportation	X	0.5635	0.8617
3331	Agriculture, Construction, and Mining Machinery Manufacturing		0.5634	0.8368
4248	Beer, Wine, and Distilled Alcoholic Beverage Merchant Wholesalers	X	0.5633	0.8477
3259	Other Chemical Product and Preparation Manufacturing	X	0.5612	0.8727
2121	Coal Mining		0.5594	0.8489
3221	Pulp, Paper, and Paperboard Mills		0.5580	0.8389
4234	Professional and Commercial Equipment and Supplies Merchant Wholesalers	X	0.5563	0.7991
5231	Securities and Commodity Contracts Intermediation and Brokerage	X	0.5541	0.9198
3364	Aerospace Product and Parts Manufacturing	X	0.5532	0.8472
3113	Sugar and Confectionery Product Manufacturing		0.5527	0.9209
3112	Grain and Oilseed Milling		0.5523	0.9230
5151	Radio and Television Broadcasting	X	0.5504	0.9396
3314	Nonferrous Metal (except Aluminum) Production and Processing	X	0.5492	0.7633
5413	Architectural, Engineering, and Related Services	X	0.5460	0.8685
5182	Data Processing, Hosting, and Related Services	X	0.5417	0.9415

**Table 6: Industries with High Desirability Index Scores (DI > .50)**

NAICS4	Description	Existing	DI	CI
5415	Computer Systems Design and Related Services	X	0.5408	0.8531
4241	Paper and Paper Product Merchant Wholesalers	X	0.5403	0.8850
4249	Miscellaneous Nondurable Goods Merchant Wholesalers	X	0.5402	0.8570
3336	Engine, Turbine, and Power Transmission Equipment Manufacturing		0.5396	0.8976
3343	Audio and Video Equipment Manufacturing	X	0.5382	0.9165
5331	Lessors of Nonfinancial Intangible Assets (except Copyrighted Works)	X	0.5375	0.9217
4237	Hardware, and Plumbing and Heating Equipment and Supplies Merchant Wholesalers	X	0.5362	0.8134
4931	Warehousing and Storage	X	0.5360	0.6654
4233	Lumber and Other Construction Materials Merchant Wholesalers	X	0.5359	0.8443
6214	Outpatient Care Centers	X	0.5349	0.8574
5418	Advertising, Public Relations, and Related Services	X	0.5342	0.8537
4243	Apparel, Piece Goods, and Notions Merchant Wholesalers	X	0.5323	0.8578
3332	Industrial Machinery Manufacturing		0.5316	0.9191
4235	Metal and Mineral (except Petroleum) Merchant Wholesalers	X	0.5301	0.8764
5121	Motion Picture and Video Industries	X	0.5296	0.8762
3222	Converted Paper Product Manufacturing		0.5283	0.9052
3333	Commercial and Service Industry Machinery Manufacturing		0.5280	0.9304
5511	Management of Companies and Enterprises	X	0.5279	0.8280
4832	Inland Water Transportation	X	0.5277	0.9332
4247	Petroleum and Petroleum Products Merchant Wholesalers	X	0.5269	0.9229
3363	Motor Vehicle Parts Manufacturing		0.5259	0.8435
8133	Social Advocacy Organizations	X	0.5257	0.8912
5111	Newspaper, Periodical, Book, and Directory Publishers	X	0.5254	0.9077
5239	Other Financial Investment Activities	X	0.5239	0.8946
3311	Iron and Steel Mills and Ferroalloy Manufacturing		0.5234	0.9225
4238	Machinery, Equipment, and Supplies Merchant Wholesalers	X	0.5223	0.8214
4246	Chemical and Allied Products Merchant Wholesalers	X	0.5222	0.8910
3391	Medical Equipment and Supplies Manufacturing	X	0.5207	0.8862
3346	Manufacturing and Reproducing Magnetic and Optical Media	X	0.5199	0.8606
5173	Wired and Wireless Telecommunications Carriers	X	0.5192	0.9182
3325	Hardware Manufacturing		0.5174	0.9124
3211	Sawmills and Wood Preservation	X	0.5158	0.8217
5112	Software Publishers	X	0.5142	0.9235
3122	Tobacco Manufacturing	X	0.5127	0.9199
3119	Other Food Manufacturing	X	0.5111	0.8894
3365	Railroad Rolling Stock Manufacturing		0.5109	0.9121
4231	Motor Vehicle and Motor Vehicle Parts and Supplies Merchant Wholesalers	X	0.5107	0.8281
3274	Lime and Gypsum Product Manufacturing		0.5099	0.8335
6215	Medical and Diagnostic Laboratories	X	0.5092	0.9050
3328	Coating, Engraving, Heat Treating, and Allied Activities	X	0.5088	0.9105
3212	Veneer, Plywood, and Engineered Wood Product Manufacturing		0.5073	0.9137
3322	Cutlery and Handtool Manufacturing		0.5067	0.9096
2123	Nonmetallic Mineral Mining and Quarrying	X	0.5062	0.9183
3359	Other Electrical Equipment and Component Manufacturing		0.5061	0.9320
3117	Seafood Product Preparation and Packaging		0.5044	0.8928
4889	Other Support Activities for Transportation	X	0.5044	0.8657
4239	Miscellaneous Durable Goods Merchant Wholesalers	X	0.5026	0.8899
4245	Farm Product Raw Material Merchant Wholesalers	X	0.5025	0.8242
2122	Metal Ore Mining		0.5015	0.8782

**Table 7: Industries with High Compatibility Index Scores (CI > .50)**

NAICS4	Description	Existing	DI	CI
5617	Services to Buildings and Dwellings	X	0.3608	0.9966
4853	Taxi and Limousine Service	X	0.3110	0.9897
8134	Civic and Social Organizations	X	0.3642	0.9812
4861	Pipeline Transportation of Crude Oil	X	0.7081	0.9768
8131	Religious Organizations	X	0.4791	0.9763
4533	Used Merchandise Stores	X	0.3485	0.9573
3149	Other Textile Product Mills	X	0.3929	0.9549
5412	Accounting, Tax Preparation, Bookkeeping, and Payroll Services	X	0.4360	0.9466
6114	Business Schools and Computer and Management Training	X	0.3816	0.9463
4922	Local Messengers and Local Delivery	X	0.3491	0.9447
5241	Insurance Carriers	X	0.5821	0.9427
5182	Data Processing, Hosting, and Related Services	X	0.5417	0.9415
6116	Other Schools and Instruction	X	0.3854	0.9404
2131	Support Activities for Mining	X	0.4441	0.9403
5179	Other Telecommunications	X	0.5990	0.9403
5151	Radio and Television Broadcasting	X	0.5504	0.9396
4855	Charter Bus Industry	X	0.3735	0.9393
4512	Book Stores and News Dealers	X	0.3801	0.9391
3261	Plastics Product Manufacturing	X	0.4383	0.9381
4441	Building Material and Supplies Dealers	X	0.4193	0.9376
6231	Nursing Care Facilities (Skilled Nursing Facilities)	X	0.4219	0.9371
4921	Couriers and Express Delivery Services	X	0.3680	0.9369
2379	Other Heavy and Civil Engineering Construction	X	0.4408	0.9360
8132	Grantmaking and Giving Services	X	0.4387	0.9351
1113	Fruit and Tree Nut Farming	X	0.3774	0.9347
4511	Sporting Goods, Hobby, and Musical Instrument Stores	X	0.3999	0.9345
6241	Individual and Family Services	X	0.3741	0.9338
4531	Florists	X	0.3670	0.9336
5122	Sound Recording Industries	X	0.4332	0.9333
4832	Inland Water Transportation	X	0.5277	0.9332
5621	Waste Collection	X	0.3778	0.9331
5232	Securities and Commodity Exchanges	X	0.4719	0.9329
6113	Colleges, Universities, and Professional Schools	X	0.4441	0.9329
5313	Activities Related to Real Estate	X	0.4292	0.9328
1152	Support Activities for Animal Production	X	0.4467	0.9323
3231	Printing and Related Support Activities	X	0.4224	0.9323
3116	Animal Slaughtering and Processing	X	0.5667	0.9322
5411	Legal Services	X	0.4654	0.9321
3359	Other Electrical Equipment and Component Manufacturing		0.5061	0.9320
4543	Direct Selling Establishments	X	0.4030	0.9313
5619	Other Support Services	X	0.4333	0.9310
3333	Commercial and Service Industry Machinery Manufacturing		0.5280	0.9304
4412	Other Motor Vehicle Dealers	X	0.4421	0.9303
7139	Other Amusement and Recreation Industries	X	0.3885	0.9302
4872	Scenic and Sightseeing Transportation, Water	X	0.4630	0.9301
8112	Electronic and Precision Equipment Repair and Maintenance	X	0.3971	0.9300
1132	Forest Nurseries and Gathering of Forest Products	X	0.4027	0.9299
4481	Clothing Stores	X	0.4238	0.9299
1153	Support Activities for Forestry	X	0.4479	0.9291

**Table 7: Industries with High Compatibility Index Scores (CI > .50)**

NAICS4	Description	Existing	DI	CI
5223	Activities Related to Credit Intermediation	X	0.4944	0.9290
8139	Business, Professional, Labor, Political, and Similar Organizations	X	0.4520	0.9280
4251	Wholesale Electronic Markets and Agents and Brokers	X	0.3848	0.9273
5191	Other Information Services	X	0.4918	0.9272
5152	Cable and Other Subscription Programming		0.6968	0.9270
4542	Vending Machine Operators	X	0.3782	0.9267
3121	Beverage Manufacturing	X	0.4198	0.9263
5616	Investigation and Security Services	X	0.3923	0.9260
3369	Other Transportation Equipment Manufacturing	X	0.4453	0.9257
8114	Personal and Household Goods Repair and Maintenance	X	0.4042	0.9256
5419	Other Professional, Scientific, and Technical Services	X	0.4491	0.9250
4852	Interurban and Rural Bus Transportation	X	0.3601	0.9242
5112	Software Publishers	X	0.5142	0.9235
3272	Glass and Glass Product Manufacturing		0.4401	0.9234
3112	Grain and Oilseed Milling		0.5523	0.9230
3334	Ventilation, Heating, Air-Conditioning, and Commercial Refrigeration Equipment Manufacturin		0.4705	0.9229
4247	Petroleum and Petroleum Products Merchant Wholesalers	X	0.5269	0.9229
1125	Aquaculture	X	0.3236	0.9227
1141	Fishing		0.4516	0.9225
3311	Iron and Steel Mills and Ferroalloy Manufacturing		0.5234	0.9225
5331	Lessors of Nonfinancial Intangible Assets (except Copyrighted Works)	X	0.5375	0.9217
3335	Metalworking Machinery Manufacturing		0.4784	0.9213
6115	Technical and Trade Schools	X	0.3696	0.9211
3113	Sugar and Confectionery Product Manufacturing		0.5527	0.9209
1142	Hunting and Trapping	X	0.3148	0.9208
4879	Scenic and Sightseeing Transportation, Other	X	0.4519	0.9204
3122	Tobacco Manufacturing	X	0.5127	0.9199
5231	Securities and Commodity Contracts Intermediation and Brokerage	X	0.5541	0.9198
6216	Home Health Care Services	X	0.3792	0.9197
8122	Death Care Services	X	0.3572	0.9196
2382	Building Equipment Contractors	X	0.4400	0.9193
5251	Insurance and Employee Benefit Funds	X	0.4405	0.9193
8121	Personal Care Services	X	0.3595	0.9192
3332	Industrial Machinery Manufacturing		0.5316	0.9191
7112	Spectator Sports	X	0.3704	0.9189
3352	Household Appliance Manufacturing		0.4817	0.9186
9261	Administration of Economic Programs		0.4950	0.9186
1131	Timber Tract Operations	X	0.4441	0.9184
2123	Nonmetallic Mineral Mining and Quarrying	X	0.5062	0.9183
5173	Wired and Wireless Telecommunications Carriers	X	0.5192	0.9182
2381	Foundation, Structure, and Building Exterior Contractors	X	0.4449	0.9181
4859	Other Transit and Ground Passenger Transportation	X	0.3948	0.9174
3343	Audio and Video Equipment Manufacturing	X	0.5382	0.9165
5614	Business Support Services	X	0.4242	0.9164
3161	Leather and Hide Tanning and Finishing		0.3886	0.9163
3279	Other Nonmetallic Mineral Product Manufacturing	X	0.4617	0.9153
6212	Offices of Dentists	X	0.4296	0.9149
5222	Nondepository Credit Intermediation	X	0.4795	0.9148
5629	Remediation and Other Waste Management Services	X	0.4659	0.9148

**Table 7: Industries with High Compatibility Index Scores (CI > .50)**

NAICS4	Description	Existing	DI	CI
3115	Dairy Product Manufacturing		0.5762	0.9147
3132	Fabric Mills		0.4024	0.9144
3241	Petroleum and Coal Products Manufacturing		0.7083	0.9144
3372	Office Furniture (including Fixtures) Manufacturing		0.4353	0.9143
5613	Employment Services	X	0.4000	0.9143
3212	Veneer, Plywood, and Engineered Wood Product Manufacturing		0.5073	0.9137
7113	Promoters of Performing Arts, Sports, and Similar Events	X	0.4712	0.9137
3366	Ship and Boat Building		0.4612	0.9136
7212	RV (Recreational Vehicle) Parks and Recreational Camps	X	0.4255	0.9134
4883	Support Activities for Water Transportation	X	0.4308	0.9132
2373	Highway, Street, and Bridge Construction	X	0.4268	0.9129
2383	Building Finishing Contractors	X	0.4738	0.9128
3321	Forging and Stamping		0.4732	0.9127
8129	Other Personal Services	X	0.3780	0.9126
3325	Hardware Manufacturing		0.5174	0.9124
3365	Railroad Rolling Stock Manufacturing		0.5109	0.9121
4811	Scheduled Air Transportation	X	0.5706	0.9120
6242	Community Food and Housing, and Emergency and Other Relief Services	X	0.3391	0.9119
3328	Coating, Engraving, Heat Treating, and Allied Activities	X	0.5088	0.9105
4421	Furniture Stores	X	0.4005	0.9102
6232	Residential Intellectual and Developmental Disability, Mental Health, and Substance Abuse Fac	X	0.4334	0.9100
4539	Other Miscellaneous Store Retailers	X	0.3731	0.9098
6244	Child Day Care Services	X	0.4444	0.9097
3152	Cut and Sew Apparel Manufacturing	X	0.3762	0.9096
3322	Cutlery and Handtool Manufacturing		0.5067	0.9096
4851	Urban Transit Systems	X	0.3725	0.9091
3141	Textile Furnishings Mills		0.3764	0.9090
3114	Fruit and Vegetable Preserving and Specialty Food Manufacturing		0.4920	0.9087
7213	Rooming and Boarding Houses, Dormitories, and Workers' Camps	X	0.4062	0.9084
4882	Support Activities for Rail Transportation	X	0.4846	0.9081
4431	Electronics and Appliance Stores	X	0.4636	0.9080
3315	Foundries		0.5953	0.9078
3353	Electrical Equipment Manufacturing	X	0.5771	0.9078
1133	Logging	X	0.4636	0.9077
3351	Electric Lighting Equipment Manufacturing	X	0.4552	0.9077
5111	Newspaper, Periodical, Book, and Directory Publishers	X	0.5254	0.9077
3222	Converted Paper Product Manufacturing		0.5283	0.9052
6215	Medical and Diagnostic Laboratories	X	0.5092	0.9050
4452	Specialty Food Stores	X	0.4137	0.9049
5242	Agencies, Brokerages, and Other Insurance Related Activities	X	0.4964	0.9046
5311	Lessors of Real Estate	X	0.4207	0.9046
6243	Vocational Rehabilitation Services	X	0.4289	0.9044
3312	Steel Product Manufacturing from Purchased Steel		0.5706	0.9039
4422	Home Furnishings Stores	X	0.4037	0.9020
7131	Amusement Parks and Arcades	X	0.3583	0.9020
2362	Nonresidential Building Construction	X	0.4309	0.9019
6233	Continuing Care Retirement Communities and Assisted Living Facilities for the Elderly	X	0.4275	0.9011
1111	Oilseed and Grain Farming		0.3943	0.9008
3133	Textile and Fabric Finishing and Fabric Coating Mills	X	0.4293	0.9004

**Table 7: Industries with High Compatibility Index Scores (CI > .50)**

NAICS4	Description	Existing	DI	CI
5615	Travel Arrangement and Reservation Services	X	0.4821	0.9004
4541	Electronic Shopping and Mail-Order Houses	X	0.4294	0.9003
5312	Offices of Real Estate Agents and Brokers	X	0.4262	0.9003
7114	Agents and Managers for Artists, Athletes, Entertainers, and Other Public Figures	X	0.4835	0.9000
1112	Vegetable and Melon Farming	X	0.4104	0.8996
5622	Waste Treatment and Disposal	X	0.4460	0.8993
5259	Other Investment Pools and Funds	X	0.4626	0.8992
2212	Natural Gas Distribution	X	0.7127	0.8989
4523	General Merchandise Stores, including Warehouse Clubs and Supercenters	X	0.3722	0.8984
5323	General Rental Centers	X	0.4356	0.8980
1121	Cattle Ranching and Farming	X	0.3434	0.8977
3336	Engine, Turbine, and Power Transmission Equipment Manufacturing		0.5396	0.8976
5322	Consumer Goods Rental	X	0.4786	0.8974
3162	Footwear Manufacturing		0.3945	0.8973
4821	Rail Transportation		0.6151	0.8972
3118	Bakeries and Tortilla Manufacturing	X	0.4707	0.8966
4461	Health and Personal Care Stores	X	0.4045	0.8960
5239	Other Financial Investment Activities	X	0.5239	0.8946
4482	Shoe Stores	X	0.3760	0.8945
7225	Restaurants and Other Eating Places	X	0.4048	0.8943
1114	Greenhouse, Nursery, and Floriculture Production	X	0.3858	0.8940
6117	Educational Support Services	X	0.3915	0.8939
1119	Other Crop Farming	X	0.2693	0.8935
5321	Automotive Equipment Rental and Leasing	X	0.4744	0.8933
6239	Other Residential Care Facilities	X	0.3930	0.8932
3329	Other Fabricated Metal Product Manufacturing		0.4608	0.8930
3117	Seafood Product Preparation and Packaging		0.5044	0.8928
3342	Communications Equipment Manufacturing	X	0.5748	0.8926
3379	Other Furniture Related Product Manufacturing		0.4504	0.8925
5221	Depository Credit Intermediation	X	0.4963	0.8922
8133	Social Advocacy Organizations	X	0.5257	0.8912
4246	Chemical and Allied Products Merchant Wholesalers	X	0.5222	0.8910
4451	Grocery Stores	X	0.4081	0.8902
4239	Miscellaneous Durable Goods Merchant Wholesalers	X	0.5026	0.8899
8123	Drycleaning and Laundry Services	X	0.3627	0.8896
3119	Other Food Manufacturing	X	0.5111	0.8894
3324	Boiler, Tank, and Shipping Container Manufacturing		0.4557	0.8893
5417	Scientific Research and Development Services	X	0.6108	0.8886
4869	Other Pipeline Transportation	X	0.7446	0.8883
3327	Machine Shops; Turned Product; and Screw, Nut, and Bolt Manufacturing	X	0.4537	0.8873
4871	Scenic and Sightseeing Transportation, Land	X	0.4435	0.8873
6112	Junior Colleges	X	0.4164	0.8865
3391	Medical Equipment and Supplies Manufacturing	X	0.5207	0.8862
5416	Management, Scientific, and Technical Consulting Services	X	0.4779	0.8862
3151	Apparel Knitting Mills	X	0.3347	0.8857
4241	Paper and Paper Product Merchant Wholesalers	X	0.5403	0.8850
5611	Office Administrative Services	X	0.4419	0.8848
3251	Basic Chemical Manufacturing	X	0.6218	0.8841
3345	Navigational, Measuring, Electromedical, and Control Instruments Manufacturing	X	0.6363	0.8834



**Table 7: Industries with High Compatibility Index Scores (CI > .50)**

NAICS4	Description	Existing	DI	CI
3252	Resin, Synthetic Rubber, and Artificial and Synthetic Fibers and Filaments Manufacturing		0.6254	0.8814
3271	Clay Product and Refractory Manufacturing	X	0.4078	0.8809
1124	Sheep and Goat Farming	X	0.3180	0.8797
2371	Utility System Construction	X	0.4684	0.8796
2389	Other Specialty Trade Contractors	X	0.4261	0.8794
2122	Metal Ore Mining		0.5015	0.8782
3371	Household and Institutional Furniture and Kitchen Cabinet Manufacturing	X	0.4137	0.8779
5414	Specialized Design Services	X	0.4186	0.8768
4235	Metal and Mineral (except Petroleum) Merchant Wholesalers	X	0.5301	0.8764
5121	Motion Picture and Video Industries	X	0.5296	0.8762
3254	Pharmaceutical and Medicine Manufacturing	X	0.6966	0.8741
4483	Jewelry, Luggage, and Leather Goods Stores	X	0.3777	0.8739
3169	Other Leather and Allied Product Manufacturing	X	0.3785	0.8731
3259	Other Chemical Product and Preparation Manufacturing	X	0.5612	0.8727
3219	Other Wood Product Manufacturing		0.4707	0.8723
3255	Paint, Coating, and Adhesive Manufacturing		0.6126	0.8721
4841	General Freight Trucking	X	0.4843	0.8686
5413	Architectural, Engineering, and Related Services	X	0.5460	0.8685
3326	Spring and Wire Product Manufacturing	X	0.4675	0.8684
2111	Oil and Gas Extraction	X	0.4784	0.8680
4242	Drugs and Druggists' Sundries Merchant Wholesalers	X	0.6229	0.8677
3361	Motor Vehicle Manufacturing		0.5640	0.8663
3131	Fiber, Yarn, and Thread Mills		0.4374	0.8658
4889	Other Support Activities for Transportation	X	0.5044	0.8657
2211	Electric Power Generation, Transmission and Distribution	X	0.5971	0.8647
3262	Rubber Product Manufacturing		0.4739	0.8642
3111	Animal Food Manufacturing	X	0.4582	0.8631
3341	Computer and Peripheral Equipment Manufacturing		0.6241	0.8626
4812	Nonscheduled Air Transportation	X	0.5635	0.8617
3346	Manufacturing and Reproducing Magnetic and Optical Media	X	0.5199	0.8606
4862	Pipeline Transportation of Natural Gas	X	0.7398	0.8605
3323	Architectural and Structural Metals Manufacturing	X	0.4660	0.8592
2372	Land Subdivision	X	0.4763	0.8588
4243	Apparel, Piece Goods, and Notions Merchant Wholesalers	X	0.5323	0.8578
6214	Outpatient Care Centers	X	0.5349	0.8574
4249	Miscellaneous Nondurable Goods Merchant Wholesalers	X	0.5402	0.8570
4236	Household Appliances and Electrical and Electronic Goods Merchant Wholesalers	X	0.5775	0.8542
5418	Advertising, Public Relations, and Related Services	X	0.5342	0.8537
3253	Pesticide, Fertilizer, and Other Agricultural Chemical Manufacturing		0.6129	0.8535
5415	Computer Systems Design and Related Services	X	0.5408	0.8531
2213	Water, Sewage and Other Systems	X	0.4451	0.8525
1129	Other Animal Production	X	0.3118	0.8524
3362	Motor Vehicle Body and Trailer Manufacturing	X	0.4938	0.8522
3399	Other Miscellaneous Manufacturing	X	0.4773	0.8507
2361	Residential Building Construction	X	0.4684	0.8496
2121	Coal Mining		0.5594	0.8489
4248	Beer, Wine, and Distilled Alcoholic Beverage Merchant Wholesalers	X	0.5633	0.8477
3364	Aerospace Product and Parts Manufacturing	X	0.5532	0.8472
8113	Commercial and Industrial Machinery and Equipment (except Automotive and Electronic) Repa	X	0.4373	0.8467

**Table 7: Industries with High Compatibility Index Scores (CI > .50)**

NAICS4	Description	Existing	DI	CI
4233	Lumber and Other Construction Materials Merchant Wholesalers	X	0.5359	0.8443
3363	Motor Vehicle Parts Manufacturing		0.5259	0.8435
3159	Apparel Accessories and Other Apparel Manufacturing	X	0.4154	0.8428
3221	Pulp, Paper, and Paperboard Mills		0.5580	0.8389
3273	Cement and Concrete Product Manufacturing	X	0.5785	0.8379
3331	Agriculture, Construction, and Mining Machinery Manufacturing		0.5634	0.8368
1122	Hog and Pig Farming	X	0.3565	0.8365
3339	Other General Purpose Machinery Manufacturing	X	0.5653	0.8362
3274	Lime and Gypsum Product Manufacturing		0.5099	0.8335
4231	Motor Vehicle and Motor Vehicle Parts and Supplies Merchant Wholesalers	X	0.5107	0.8281
5511	Management of Companies and Enterprises	X	0.5279	0.8280
4245	Farm Product Raw Material Merchant Wholesalers	X	0.5025	0.8242
3211	Sawmills and Wood Preservation	X	0.5158	0.8217
4238	Machinery, Equipment, and Supplies Merchant Wholesalers	X	0.5223	0.8214
3313	Alumina and Aluminum Production and Processing		0.5892	0.8192
4237	Hardware, and Plumbing and Heating Equipment and Supplies Merchant Wholesalers	X	0.5362	0.8134
6111	Elementary and Secondary Schools	X	0.4384	0.8034
7121	Museums, Historical Sites, and Similar Institutions	X	0.4163	0.8001
4244	Grocery and Related Product Merchant Wholesalers	X	0.5821	0.7996
4234	Professional and Commercial Equipment and Supplies Merchant Wholesalers	X	0.5563	0.7991
7223	Special Food Services	X	0.3992	0.7957
1151	Support Activities for Crop Production	X	0.4450	0.7888
3344	Semiconductor and Other Electronic Component Manufacturing	X	0.7410	0.7717
3314	Nonferrous Metal (except Aluminum) Production and Processing	X	0.5492	0.7633
3256	Soap, Cleaning Compound, and Toilet Preparation Manufacturing		0.6740	0.7120
4881	Support Activities for Air Transportation	X	0.4996	0.7036
4442	Lawn and Garden Equipment and Supplies Stores	X	0.4167	0.6869
4931	Warehousing and Storage	X	0.5360	0.6654
4411	Automobile Dealers	X	0.4588	0.5428
4885	Freight Transportation Arrangement	X	0.4988	0.5168

**Table 8: Compatibility Index and Desirability Index Scores - All Industries**

NAICS4	Description	Existing	DI	CI
1111	Oilseed and Grain Farming		0.3943	0.9008
1112	Vegetable and Melon Farming	X	0.4104	0.8996
1113	Fruit and Tree Nut Farming	X	0.3774	0.9347
1114	Greenhouse, Nursery, and Floriculture Production	X	0.3858	0.8940
1119	Other Crop Farming	X	0.2693	0.8935
1121	Cattle Ranching and Farming	X	0.3434	0.8977
1122	Hog and Pig Farming	X	0.3565	0.8365
1124	Sheep and Goat Farming	X	0.3180	0.8797
1125	Aquaculture	X	0.3236	0.9227
1129	Other Animal Production	X	0.3118	0.8524
1131	Timber Tract Operations	X	0.4441	0.9184
1132	Forest Nurseries and Gathering of Forest Products	X	0.4027	0.9299
1133	Logging	X	0.4636	0.9077
1141	Fishing		0.4516	0.9225
1142	Hunting and Trapping	X	0.3148	0.9208
1151	Support Activities for Crop Production	X	0.4450	0.7888
1152	Support Activities for Animal Production	X	0.4467	0.9323
1153	Support Activities for Forestry	X	0.4479	0.9291
2111	Oil and Gas Extraction	X	0.4784	0.8680
2121	Coal Mining		0.5594	0.8489
2122	Metal Ore Mining		0.5015	0.8782
2123	Nonmetallic Mineral Mining and Quarrying	X	0.5062	0.9183
2131	Support Activities for Mining	X	0.4441	0.9403
2211	Electric Power Generation, Transmission and Distribution	X	0.5971	0.8647
2212	Natural Gas Distribution	X	0.7127	0.8989
2213	Water, Sewage and Other Systems	X	0.4451	0.8525
2361	Residential Building Construction	X	0.4684	0.8496
2362	Nonresidential Building Construction	X	0.4309	0.9019
2371	Utility System Construction	X	0.4684	0.8796
2372	Land Subdivision	X	0.4763	0.8588
2373	Highway, Street, and Bridge Construction	X	0.4268	0.9129
2379	Other Heavy and Civil Engineering Construction	X	0.4408	0.9360
2381	Foundation, Structure, and Building Exterior Contractors	X	0.4449	0.9181
2382	Building Equipment Contractors	X	0.4400	0.9193
2383	Building Finishing Contractors	X	0.4738	0.9128
2389	Other Specialty Trade Contractors	X	0.4261	0.8794
3111	Animal Food Manufacturing	X	0.4582	0.8631
3112	Grain and Oilseed Milling		0.5523	0.9230
3113	Sugar and Confectionery Product Manufacturing		0.5527	0.9209
3114	Fruit and Vegetable Preserving and Specialty Food Manufacturing		0.4920	0.9087
3115	Dairy Product Manufacturing		0.5762	0.9147
3116	Animal Slaughtering and Processing	X	0.5667	0.9322
3117	Seafood Product Preparation and Packaging		0.5044	0.8928
3118	Bakeries and Tortilla Manufacturing	X	0.4707	0.8966
3119	Other Food Manufacturing	X	0.5111	0.8894
3121	Beverage Manufacturing	X	0.4198	0.9263
3122	Tobacco Manufacturing	X	0.5127	0.9199
3131	Fiber, Yarn, and Thread Mills		0.4374	0.8658
3132	Fabric Mills		0.4024	0.9144

**Table 8: Compatibility Index and Desirability Index Scores - All Industries**

NAICS4	Description	Existing	DI	CI
3133	Textile and Fabric Finishing and Fabric Coating Mills	X	0.4293	0.9004
3141	Textile Furnishings Mills		0.3764	0.9090
3149	Other Textile Product Mills	X	0.3929	0.9549
3151	Apparel Knitting Mills	X	0.3347	0.8857
3152	Cut and Sew Apparel Manufacturing	X	0.3762	0.9096
3159	Apparel Accessories and Other Apparel Manufacturing	X	0.4154	0.8428
3161	Leather and Hide Tanning and Finishing		0.3886	0.9163
3162	Footwear Manufacturing		0.3945	0.8973
3169	Other Leather and Allied Product Manufacturing	X	0.3785	0.8731
3211	Sawmills and Wood Preservation	X	0.5158	0.8217
3212	Veneer, Plywood, and Engineered Wood Product Manufacturing		0.5073	0.9137
3219	Other Wood Product Manufacturing		0.4707	0.8723
3221	Pulp, Paper, and Paperboard Mills		0.5580	0.8389
3222	Converted Paper Product Manufacturing		0.5283	0.9052
3231	Printing and Related Support Activities	X	0.4224	0.9323
3241	Petroleum and Coal Products Manufacturing		0.7083	0.9144
3251	Basic Chemical Manufacturing	X	0.6218	0.8841
3252	Resin, Synthetic Rubber, and Artificial and Synthetic Fibers and Filaments Manufacturing		0.6254	0.8814
3253	Pesticide, Fertilizer, and Other Agricultural Chemical Manufacturing		0.6129	0.8535
3254	Pharmaceutical and Medicine Manufacturing	X	0.6966	0.8741
3255	Paint, Coating, and Adhesive Manufacturing		0.6126	0.8721
3256	Soap, Cleaning Compound, and Toilet Preparation Manufacturing		0.6740	0.7120
3259	Other Chemical Product and Preparation Manufacturing	X	0.5612	0.8727
3261	Plastics Product Manufacturing	X	0.4383	0.9381
3262	Rubber Product Manufacturing		0.4739	0.8642
3271	Clay Product and Refractory Manufacturing	X	0.4078	0.8809
3272	Glass and Glass Product Manufacturing		0.4401	0.9234
3273	Cement and Concrete Product Manufacturing	X	0.5785	0.8379
3274	Lime and Gypsum Product Manufacturing		0.5099	0.8335
3279	Other Nonmetallic Mineral Product Manufacturing	X	0.4617	0.9153
3311	Iron and Steel Mills and Ferroalloy Manufacturing		0.5234	0.9225
3312	Steel Product Manufacturing from Purchased Steel		0.5706	0.9039
3313	Alumina and Aluminum Production and Processing		0.5892	0.8192
3314	Nonferrous Metal (except Aluminum) Production and Processing	X	0.5492	0.7633
3315	Foundries		0.5953	0.9078
3321	Forging and Stamping		0.4732	0.9127
3322	Cutlery and Handtool Manufacturing		0.5067	0.9096
3323	Architectural and Structural Metals Manufacturing	X	0.4660	0.8592
3324	Boiler, Tank, and Shipping Container Manufacturing		0.4557	0.8893
3325	Hardware Manufacturing		0.5174	0.9124
3326	Spring and Wire Product Manufacturing	X	0.4675	0.8684
3327	Machine Shops; Turned Product; and Screw, Nut, and Bolt Manufacturing	X	0.4537	0.8873
3328	Coating, Engraving, Heat Treating, and Allied Activities	X	0.5088	0.9105
3329	Other Fabricated Metal Product Manufacturing		0.4608	0.8930
3331	Agriculture, Construction, and Mining Machinery Manufacturing		0.5634	0.8368
3332	Industrial Machinery Manufacturing		0.5316	0.9191
3333	Commercial and Service Industry Machinery Manufacturing		0.5280	0.9304
3334	Ventilation, Heating, Air-Conditioning, and Commercial Refrigeration Equipment Manufacturin		0.4705	0.9229
3335	Metalworking Machinery Manufacturing		0.4784	0.9213

**Table 8: Compatibility Index and Desirability Index Scores - All Industries**

NAICS4	Description	Existing	DI	CI
3336	Engine, Turbine, and Power Transmission Equipment Manufacturing		0.5396	0.8976
3339	Other General Purpose Machinery Manufacturing	X	0.5653	0.8362
3341	Computer and Peripheral Equipment Manufacturing		0.6241	0.8626
3342	Communications Equipment Manufacturing	X	0.5748	0.8926
3343	Audio and Video Equipment Manufacturing	X	0.5382	0.9165
3344	Semiconductor and Other Electronic Component Manufacturing	X	0.7410	0.7717
3345	Navigational, Measuring, Electromedical, and Control Instruments Manufacturing	X	0.6363	0.8834
3346	Manufacturing and Reproducing Magnetic and Optical Media	X	0.5199	0.8606
3351	Electric Lighting Equipment Manufacturing	X	0.4552	0.9077
3352	Household Appliance Manufacturing		0.4817	0.9186
3353	Electrical Equipment Manufacturing	X	0.5771	0.9078
3359	Other Electrical Equipment and Component Manufacturing		0.5061	0.9320
3361	Motor Vehicle Manufacturing		0.5640	0.8663
3362	Motor Vehicle Body and Trailer Manufacturing	X	0.4938	0.8522
3363	Motor Vehicle Parts Manufacturing		0.5259	0.8435
3364	Aerospace Product and Parts Manufacturing	X	0.5532	0.8472
3365	Railroad Rolling Stock Manufacturing		0.5109	0.9121
3366	Ship and Boat Building		0.4612	0.9136
3369	Other Transportation Equipment Manufacturing	X	0.4453	0.9257
3371	Household and Institutional Furniture and Kitchen Cabinet Manufacturing	X	0.4137	0.8779
3372	Office Furniture (including Fixtures) Manufacturing		0.4353	0.9143
3379	Other Furniture Related Product Manufacturing		0.4504	0.8925
3391	Medical Equipment and Supplies Manufacturing	X	0.5207	0.8862
3399	Other Miscellaneous Manufacturing	X	0.4773	0.8507
4231	Motor Vehicle and Motor Vehicle Parts and Supplies Merchant Wholesalers	X	0.5107	0.8281
4233	Lumber and Other Construction Materials Merchant Wholesalers	X	0.5359	0.8443
4234	Professional and Commercial Equipment and Supplies Merchant Wholesalers	X	0.5563	0.7991
4235	Metal and Mineral (except Petroleum) Merchant Wholesalers	X	0.5301	0.8764
4236	Household Appliances and Electrical and Electronic Goods Merchant Wholesalers	X	0.5775	0.8542
4237	Hardware, and Plumbing and Heating Equipment and Supplies Merchant Wholesalers	X	0.5362	0.8134
4238	Machinery, Equipment, and Supplies Merchant Wholesalers	X	0.5223	0.8214
4239	Miscellaneous Durable Goods Merchant Wholesalers	X	0.5026	0.8899
4241	Paper and Paper Product Merchant Wholesalers	X	0.5403	0.8850
4242	Drugs and Druggists' Sundries Merchant Wholesalers	X	0.6229	0.8677
4243	Apparel, Piece Goods, and Notions Merchant Wholesalers	X	0.5323	0.8578
4244	Grocery and Related Product Merchant Wholesalers	X	0.5821	0.7996
4245	Farm Product Raw Material Merchant Wholesalers	X	0.5025	0.8242
4246	Chemical and Allied Products Merchant Wholesalers	X	0.5222	0.8910
4247	Petroleum and Petroleum Products Merchant Wholesalers	X	0.5269	0.9229
4248	Beer, Wine, and Distilled Alcoholic Beverage Merchant Wholesalers	X	0.5633	0.8477
4249	Miscellaneous Nondurable Goods Merchant Wholesalers	X	0.5402	0.8570
4251	Wholesale Electronic Markets and Agents and Brokers	X	0.3848	0.9273
4411	Automobile Dealers	X	0.4588	0.5428
4412	Other Motor Vehicle Dealers	X	0.4421	0.9303
4421	Furniture Stores	X	0.4005	0.9102
4422	Home Furnishings Stores	X	0.4037	0.9020
4431	Electronics and Appliance Stores	X	0.4636	0.9080
4441	Building Material and Supplies Dealers	X	0.4193	0.9376
4442	Lawn and Garden Equipment and Supplies Stores	X	0.4167	0.6869

**Table 8: Compatibility Index and Desirability Index Scores - All Industries**

NAICS4	Description	Existing	DI	CI
4451	Grocery Stores	X	0.4081	0.8902
4452	Specialty Food Stores	X	0.4137	0.9049
4461	Health and Personal Care Stores	X	0.4045	0.8960
4481	Clothing Stores	X	0.4238	0.9299
4482	Shoe Stores	X	0.3760	0.8945
4483	Jewelry, Luggage, and Leather Goods Stores	X	0.3777	0.8739
4511	Sporting Goods, Hobby, and Musical Instrument Stores	X	0.3999	0.9345
4512	Book Stores and News Dealers	X	0.3801	0.9391
4523	General Merchandise Stores, including Warehouse Clubs and Supercenters	X	0.3722	0.8984
4531	Florists	X	0.3670	0.9336
4533	Used Merchandise Stores	X	0.3485	0.9573
4539	Other Miscellaneous Store Retailers	X	0.3731	0.9098
4541	Electronic Shopping and Mail-Order Houses	X	0.4294	0.9003
4542	Vending Machine Operators	X	0.3782	0.9267
4543	Direct Selling Establishments	X	0.4030	0.9313
4811	Scheduled Air Transportation	X	0.5706	0.9120
4812	Nonscheduled Air Transportation	X	0.5635	0.8617
4821	Rail Transportation		0.6151	0.8972
4832	Inland Water Transportation	X	0.5277	0.9332
4841	General Freight Trucking	X	0.4843	0.8686
4851	Urban Transit Systems	X	0.3725	0.9091
4852	Interurban and Rural Bus Transportation	X	0.3601	0.9242
4853	Taxi and Limousine Service	X	0.3110	0.9897
4855	Charter Bus Industry	X	0.3735	0.9393
4859	Other Transit and Ground Passenger Transportation	X	0.3948	0.9174
4861	Pipeline Transportation of Crude Oil	X	0.7081	0.9768
4862	Pipeline Transportation of Natural Gas	X	0.7398	0.8605
4869	Other Pipeline Transportation	X	0.7446	0.8883
4871	Scenic and Sightseeing Transportation, Land	X	0.4435	0.8873
4872	Scenic and Sightseeing Transportation, Water	X	0.4630	0.9301
4879	Scenic and Sightseeing Transportation, Other	X	0.4519	0.9204
4881	Support Activities for Air Transportation	X	0.4996	0.7036
4882	Support Activities for Rail Transportation	X	0.4846	0.9081
4883	Support Activities for Water Transportation	X	0.4308	0.9132
4885	Freight Transportation Arrangement	X	0.4988	0.5168
4889	Other Support Activities for Transportation	X	0.5044	0.8657
4921	Couriers and Express Delivery Services	X	0.3680	0.9369
4922	Local Messengers and Local Delivery	X	0.3491	0.9447
4931	Warehousing and Storage	X	0.5360	0.6654
5111	Newspaper, Periodical, Book, and Directory Publishers	X	0.5254	0.9077
5112	Software Publishers	X	0.5142	0.9235
5121	Motion Picture and Video Industries	X	0.5296	0.8762
5122	Sound Recording Industries	X	0.4332	0.9333
5151	Radio and Television Broadcasting	X	0.5504	0.9396
5152	Cable and Other Subscription Programming		0.6968	0.9270
5173	Wired and Wireless Telecommunications Carriers	X	0.5192	0.9182
5179	Other Telecommunications	X	0.5990	0.9403
5182	Data Processing, Hosting, and Related Services	X	0.5417	0.9415
5191	Other Information Services	X	0.4918	0.9272

**Table 8: Compatibility Index and Desirability Index Scores - All Industries**

NAICS4	Description	Existing	DI	CI
5221	Depository Credit Intermediation	X	0.4963	0.8922
5222	Nondepository Credit Intermediation	X	0.4795	0.9148
5223	Activities Related to Credit Intermediation	X	0.4944	0.9290
5231	Securities and Commodity Contracts Intermediation and Brokerage	X	0.5541	0.9198
5232	Securities and Commodity Exchanges	X	0.4719	0.9329
5239	Other Financial Investment Activities	X	0.5239	0.8946
5241	Insurance Carriers	X	0.5821	0.9427
5242	Agencies, Brokerages, and Other Insurance Related Activities	X	0.4964	0.9046
5251	Insurance and Employee Benefit Funds	X	0.4405	0.9193
5259	Other Investment Pools and Funds	X	0.4626	0.8992
5311	Lessors of Real Estate	X	0.4207	0.9046
5312	Offices of Real Estate Agents and Brokers	X	0.4262	0.9003
5313	Activities Related to Real Estate	X	0.4292	0.9328
5321	Automotive Equipment Rental and Leasing	X	0.4744	0.8933
5322	Consumer Goods Rental	X	0.4786	0.8974
5323	General Rental Centers	X	0.4356	0.8980
5331	Lessors of Nonfinancial Intangible Assets (except Copyrighted Works)	X	0.5375	0.9217
5411	Legal Services	X	0.4654	0.9321
5412	Accounting, Tax Preparation, Bookkeeping, and Payroll Services	X	0.4360	0.9466
5413	Architectural, Engineering, and Related Services	X	0.5460	0.8685
5414	Specialized Design Services	X	0.4186	0.8768
5415	Computer Systems Design and Related Services	X	0.5408	0.8531
5416	Management, Scientific, and Technical Consulting Services	X	0.4779	0.8862
5417	Scientific Research and Development Services	X	0.6108	0.8886
5418	Advertising, Public Relations, and Related Services	X	0.5342	0.8537
5419	Other Professional, Scientific, and Technical Services	X	0.4491	0.9250
5511	Management of Companies and Enterprises	X	0.5279	0.8280
5611	Office Administrative Services	X	0.4419	0.8848
5613	Employment Services	X	0.4000	0.9143
5614	Business Support Services	X	0.4242	0.9164
5615	Travel Arrangement and Reservation Services	X	0.4821	0.9004
5616	Investigation and Security Services	X	0.3923	0.9260
5617	Services to Buildings and Dwellings	X	0.3608	0.9966
5619	Other Support Services	X	0.4333	0.9310
5621	Waste Collection	X	0.3778	0.9331
5622	Waste Treatment and Disposal	X	0.4460	0.8993
5629	Remediation and Other Waste Management Services	X	0.4659	0.9148
6111	Elementary and Secondary Schools	X	0.4384	0.8034
6112	Junior Colleges	X	0.4164	0.8865
6113	Colleges, Universities, and Professional Schools	X	0.4441	0.9329
6114	Business Schools and Computer and Management Training	X	0.3816	0.9463
6115	Technical and Trade Schools	X	0.3696	0.9211
6116	Other Schools and Instruction	X	0.3854	0.9404
6117	Educational Support Services	X	0.3915	0.8939
6212	Offices of Dentists	X	0.4296	0.9149
6214	Outpatient Care Centers	X	0.5349	0.8574
6215	Medical and Diagnostic Laboratories	X	0.5092	0.9050
6216	Home Health Care Services	X	0.3792	0.9197
6231	Nursing Care Facilities (Skilled Nursing Facilities)	X	0.4219	0.9371

**Table 8: Compatibility Index and Desirability Index Scores - All Industries**

NAICS4	Description	Existing	DI	CI
6232	Residential Intellectual and Developmental Disability, Mental Health, and Substance Abuse Fac	X	0.4334	0.9100
6233	Continuing Care Retirement Communities and Assisted Living Facilities for the Elderly	X	0.4275	0.9011
6239	Other Residential Care Facilities	X	0.3930	0.8932
6241	Individual and Family Services	X	0.3741	0.9338
6242	Community Food and Housing, and Emergency and Other Relief Services	X	0.3391	0.9119
6243	Vocational Rehabilitation Services	X	0.4289	0.9044
6244	Child Day Care Services	X	0.4444	0.9097
7112	Spectator Sports	X	0.3704	0.9189
7113	Promoters of Performing Arts, Sports, and Similar Events	X	0.4712	0.9137
7114	Agents and Managers for Artists, Athletes, Entertainers, and Other Public Figures	X	0.4835	0.9000
7121	Museums, Historical Sites, and Similar Institutions	X	0.4163	0.8001
7131	Amusement Parks and Arcades	X	0.3583	0.9020
7139	Other Amusement and Recreation Industries	X	0.3885	0.9302
7212	RV (Recreational Vehicle) Parks and Recreational Camps	X	0.4255	0.9134
7213	Rooming and Boarding Houses, Dormitories, and Workers' Camps	X	0.4062	0.9084
7223	Special Food Services	X	0.3992	0.7957
7225	Restaurants and Other Eating Places	X	0.4048	0.8943
8112	Electronic and Precision Equipment Repair and Maintenance	X	0.3971	0.9300
8113	Commercial and Industrial Machinery and Equipment (except Automotive and Electronic) Repa	X	0.4373	0.8467
8114	Personal and Household Goods Repair and Maintenance	X	0.4042	0.9256
8121	Personal Care Services	X	0.3595	0.9192
8122	Death Care Services	X	0.3572	0.9196
8123	Drycleaning and Laundry Services	X	0.3627	0.8896
8129	Other Personal Services	X	0.3780	0.9126
8131	Religious Organizations	X	0.4791	0.9763
8132	Grantmaking and Giving Services	X	0.4387	0.9351
8133	Social Advocacy Organizations	X	0.5257	0.8912
8134	Civic and Social Organizations	X	0.3642	0.9812
8139	Business, Professional, Labor, Political, and Similar Organizations	X	0.4520	0.9280
9261	Administration of Economic Programs		0.4950	0.9186