

Table 1: Colfax County, NM Community Development Goal Rankings

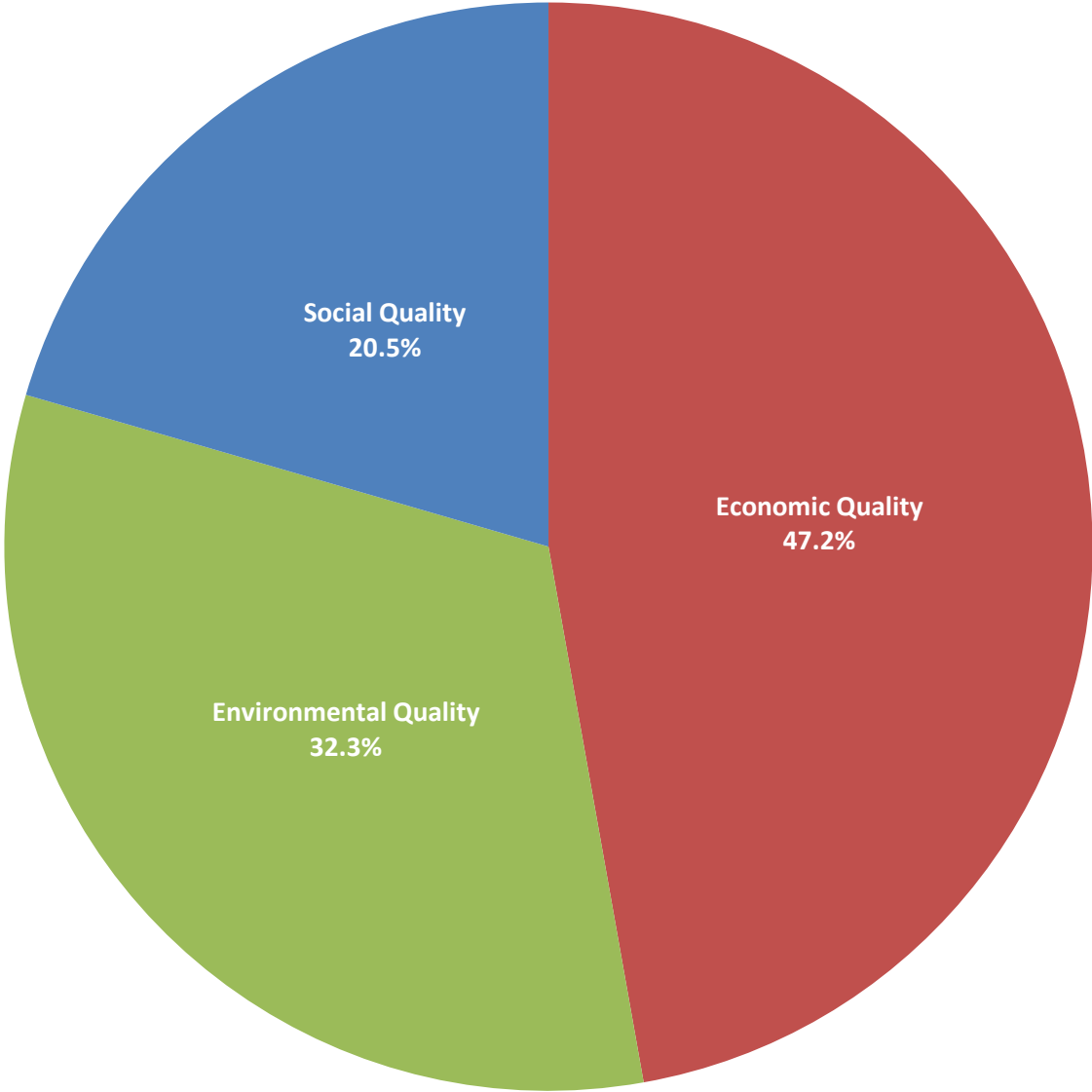
<i>Goal</i>	<i>Weight</i>	<i>Rank</i>
Economic Quality	47.20%	1
Environmental Quality	32.30%	2
Social Quality	20.50%	3

Table 2: Community Development Indicator Rankings

<i>Indicator</i>	<i>Weight</i>	<i>Rank</i>
G1.I1 - Every new job generates additional jobs in the community	8.45%	5
G1.I2 - New businesses return profits to the community	11.85%	1
G1.I3 - New businesses hire locally	10.15%	2
G1.I4 - New businesses buy locally	9.39%	3
G1.I5 - New businesses increase the average local wage	7.32%	8
G2.I1 - New businesses do not pollute the water	7.95%	6
G2.I2 - New businesses do not release toxic chemicals in the air	7.49%	7
G2.I3 - New businesses are in compliance with hazardous waste management	8.98%	4
G2.I4 - New businesses do not emit greenhouse gas	4.68%	10
G2.I5 - New businesses do not develop undeveloped land	3.20%	15
G3.I1 - New businesses increase the local tax base	3.61%	13
G3.I2 - New jobs are full-time	3.42%	14
G3.I3 - New jobs offer benefits (health and/or retirement)	5.29%	9
G3.I4 - New jobs provide training programs	3.96%	12
G3.I5 - New businesses support community activities	4.24%	11

Number of observations	20
------------------------	----

**Figure 1: Community Development Goal Weights:
Colfax County, NM**



**Figure 2: Community Development Indicator Weights:
Colfax County, NM**

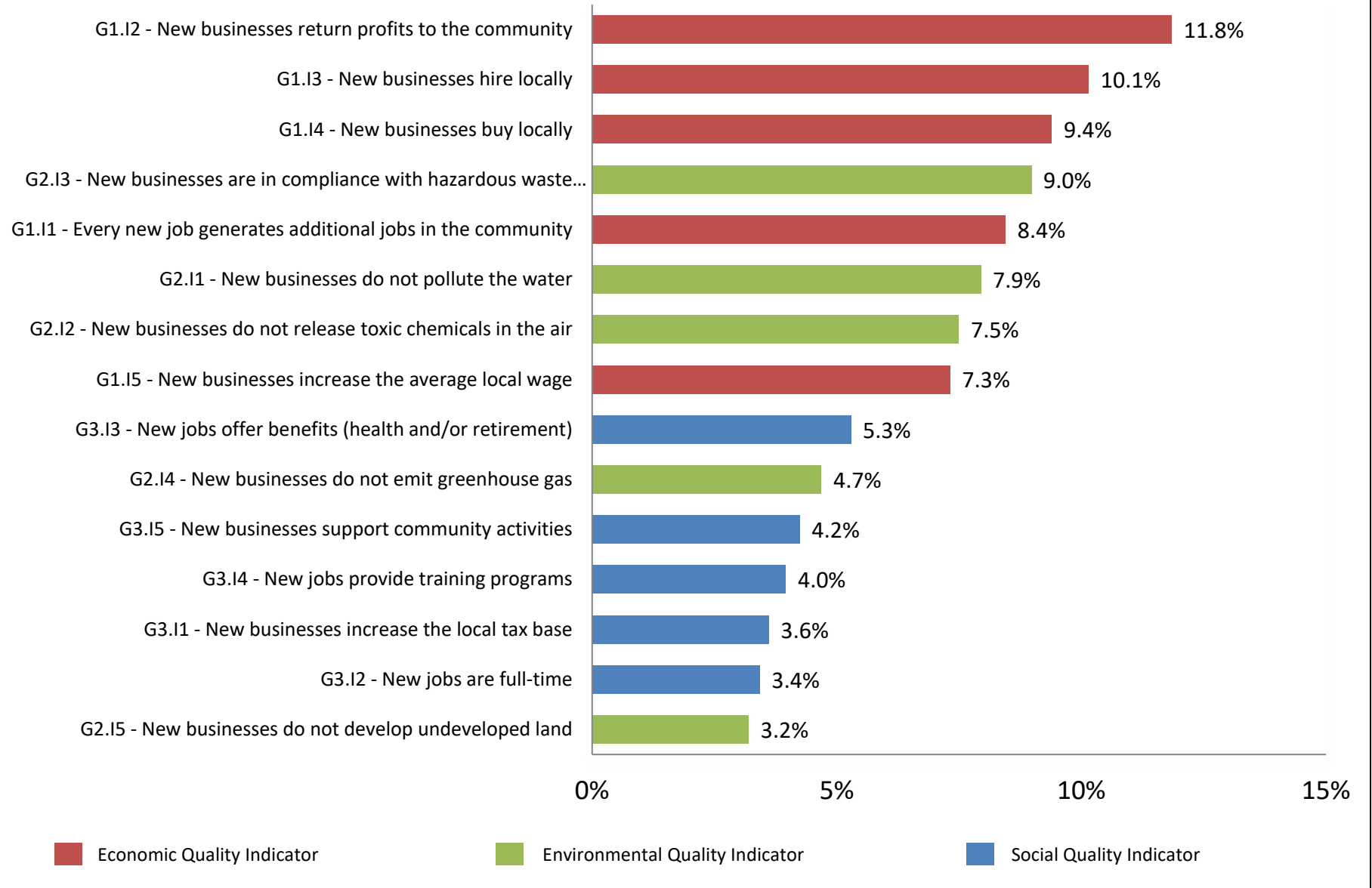
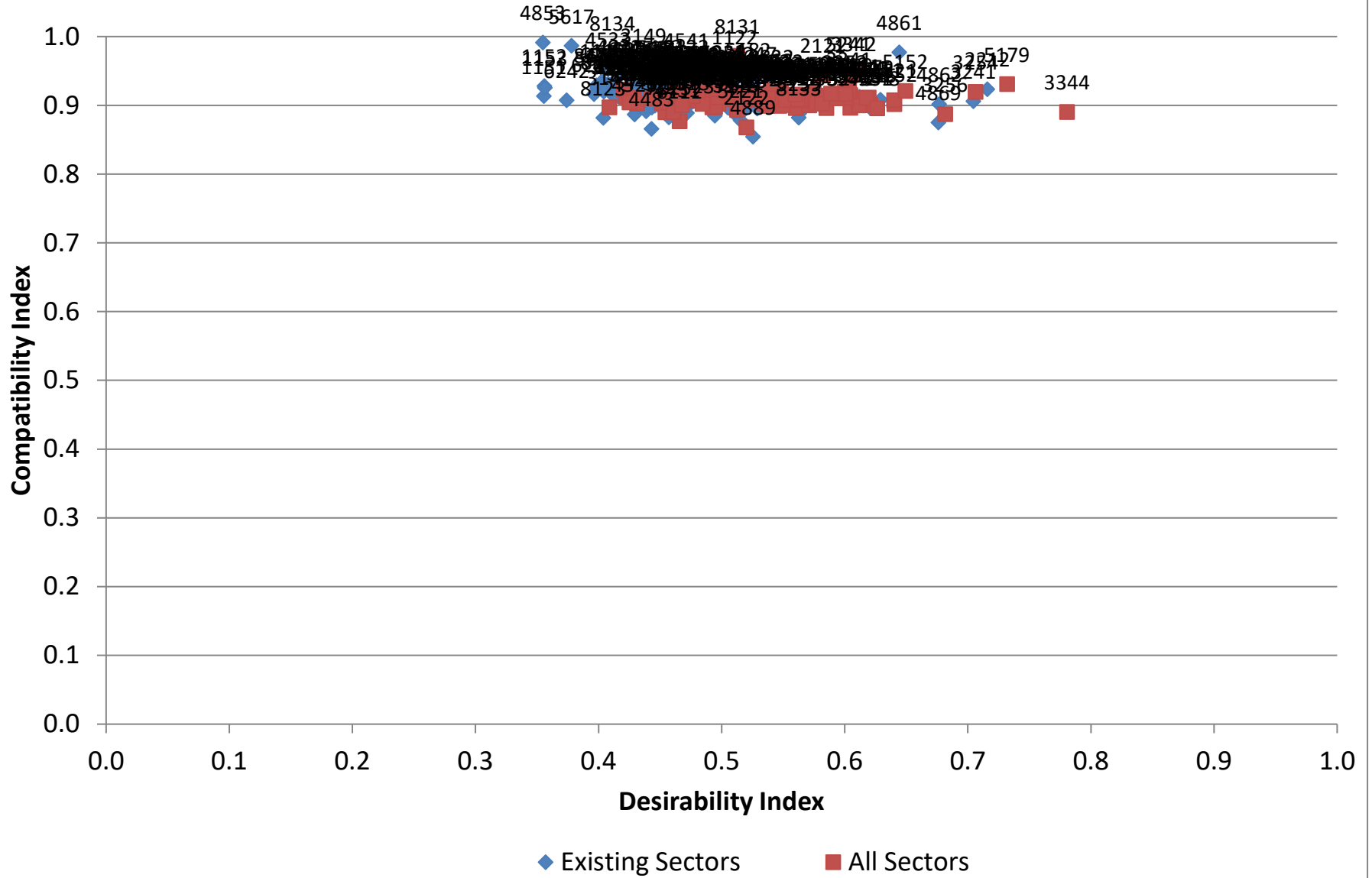


Figure 3: Colfax County, NM ASAP Results
All NAICS



**Figure 4: Colfax County, NM ASAP Results
High Index NAICS**

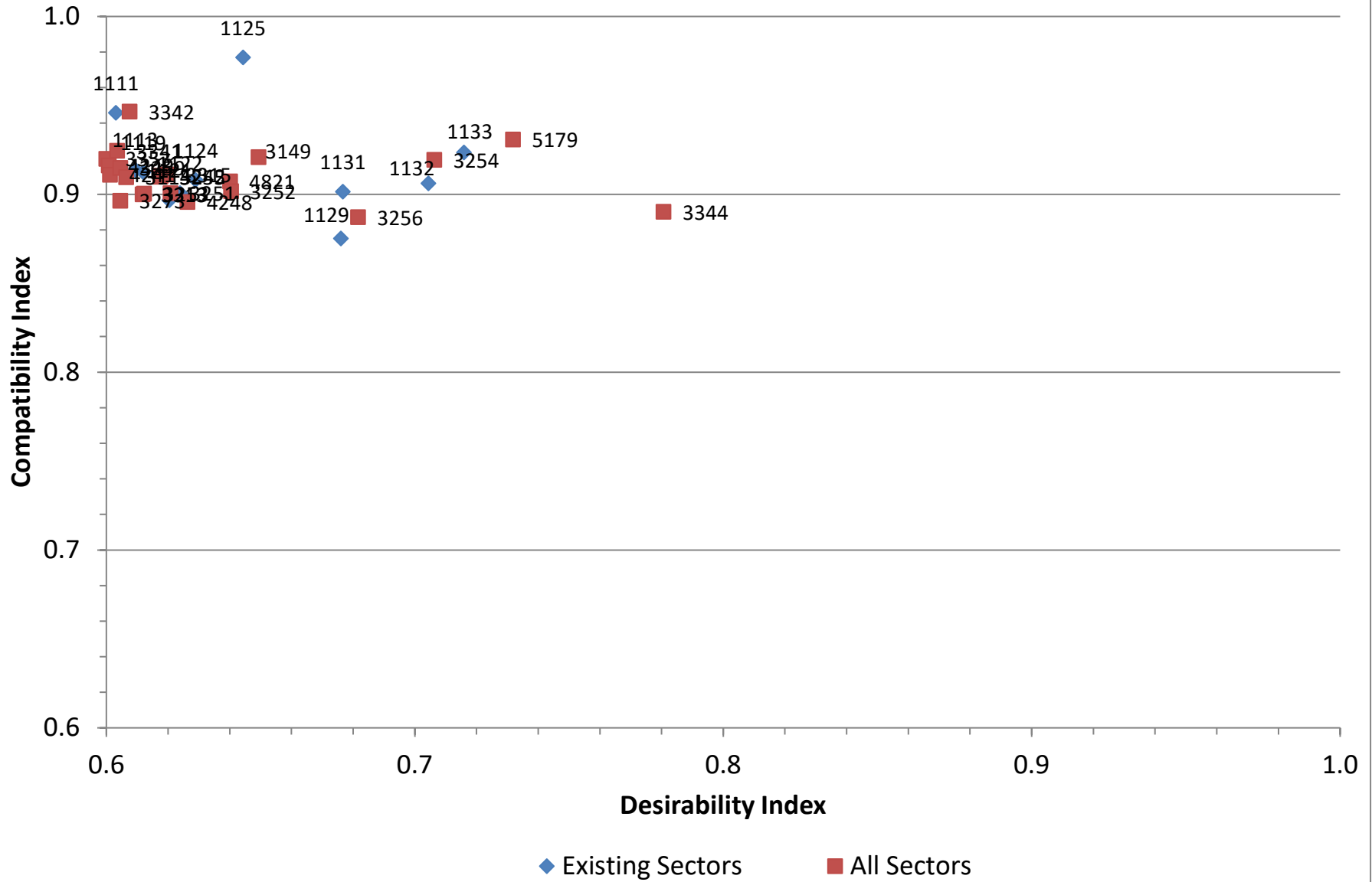


Figure 5: Colfax County, NM ASAP Results
Target NAICS

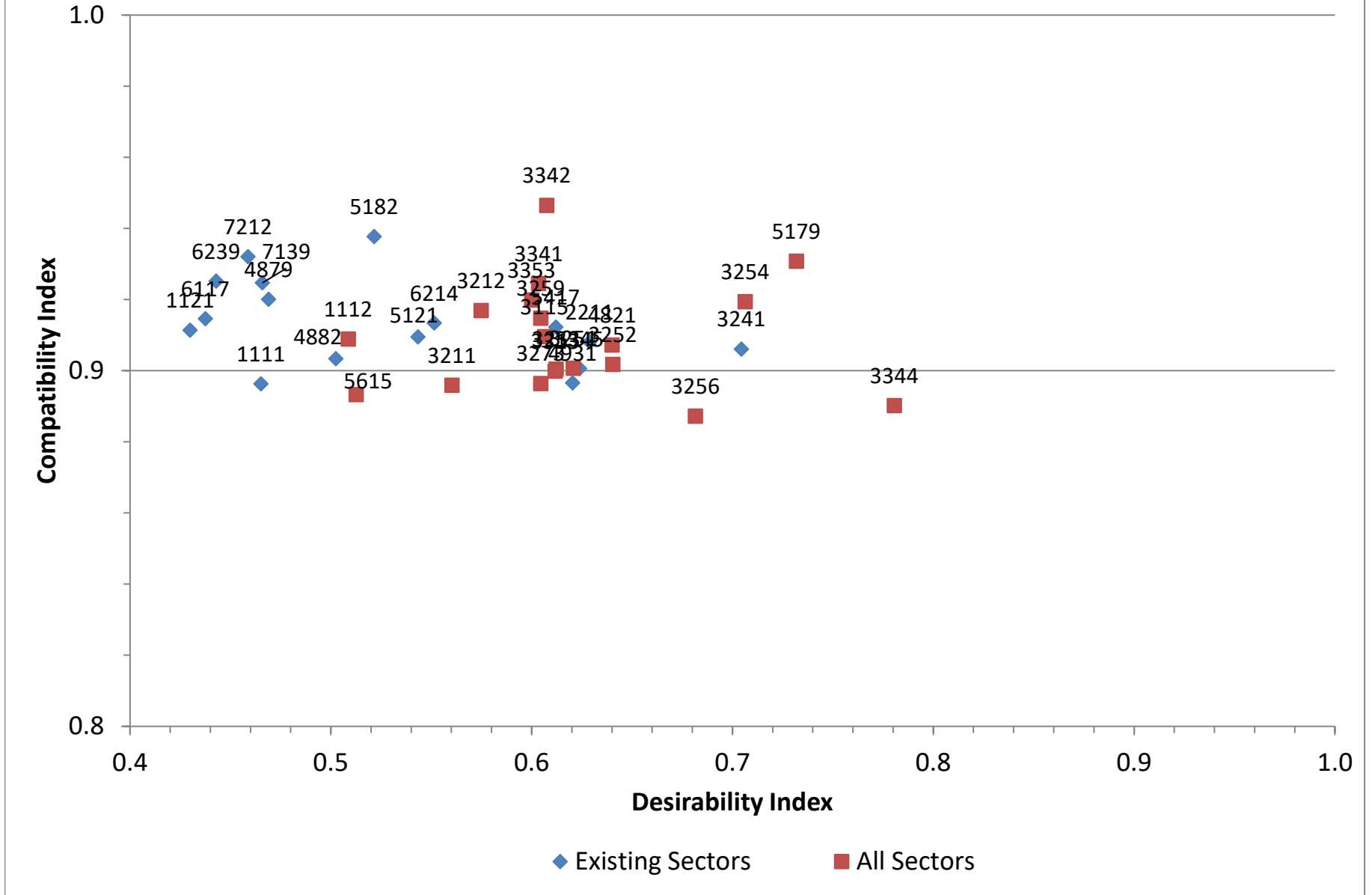


Table 3: Industries with High Desirability and Compatibility Index Scores (Index > .60)

NAICS4	Description	Existing	DI	CI
3353	Electrical Equipment Manufacturing		0.6000	0.9199
4249	Miscellaneous Nondurable Goods Merchant Wholesalers		0.6008	0.9162
4241	Paper and Paper Product Merchant Wholesalers		0.6012	0.9110
5241	Insurance Carriers	X	0.6031	0.9459
3341	Computer and Peripheral Equipment Manufacturing		0.6035	0.9245
3273	Cement and Concrete Product Manufacturing		0.6045	0.8964
3259	Other Chemical Product and Preparation Manufacturing		0.6045	0.9148
3115	Dairy Product Manufacturing		0.6064	0.9096
3342	Communications Equipment Manufacturing		0.6075	0.9465
4244	Grocery and Related Product Merchant Wholesalers	X	0.6094	0.9138
3313	Alumina and Aluminum Production and Processing		0.6117	0.8999
5417	Scientific Research and Development Services	X	0.6120	0.9123
3253	Pesticide, Fertilizer, and Other Agricultural Chemical Manufacturing		0.6122	0.9004
3255	Paint, Coating, and Adhesive Manufacturing		0.6175	0.9099
4242	Drugs and Druggists' Sundries Merchant Wholesalers		0.6176	0.9104
3315	Foundries		0.6195	0.9111
4931	Warehousing and Storage	X	0.6204	0.8966
3251	Basic Chemical Manufacturing		0.6208	0.9007
3345	Navigational, Measuring, Electromedical, and Control Instruments Manufacturing	X	0.6239	0.9006
4248	Beer, Wine, and Distilled Alcoholic Beverage Merchant Wholesalers		0.6263	0.8957
2211	Electric Power Generation, Transmission and Distribution	X	0.6289	0.9081
4821	Rail Transportation		0.6401	0.9072
3252	Resin, Synthetic Rubber, and Artificial and Synthetic Fibers and Filaments Manufacturing		0.6404	0.9018
4861	Pipeline Transportation of Crude Oil	X	0.6443	0.9770
5152	Cable and Other Subscription Programming		0.6493	0.9209
4869	Other Pipeline Transportation	X	0.6760	0.8751
4862	Pipeline Transportation of Natural Gas	X	0.6767	0.9015
3256	Soap, Cleaning Compound, and Toilet Preparation Manufacturing		0.6816	0.8872
3241	Petroleum and Coal Products Manufacturing	X	0.7044	0.9061
3254	Pharmaceutical and Medicine Manufacturing		0.7063	0.9194
2212	Natural Gas Distribution	X	0.7159	0.9235
5179	Other Telecommunications		0.7318	0.9308
3344	Semiconductor and Other Electronic Component Manufacturing		0.7806	0.8902

Table 4: Industries with High Desirability and Compatibility Index Scores (Index > .60)

NAICS3	Description	Count
221	Utilities	2
311	Food Manufacturing	1
324	Petroleum and Coal Products Manufacturing	1
325	Chemical Manufacturing	7
327	Nonmetallic Mineral Product Manufacturing	1
331	Primary Metal Manufacturing	2
334	Computer and Electronic Product Manufacturing	4
335	Electrical Equipment, Appliance, and Component Manufacturing	1
424	Merchant Wholesalers, Nondurable Goods	5
482	Rail Transportation	1
486	Pipeline Transportation	3
493	Warehousing and Storage	1
515	Broadcasting	1
517	Telecommunications	1
524	Insurance Carriers and Related Activities	1
541	Professional, Scientific, and Technical Services	1

Table 5: Colfax County, NM Target Industries

NAICS4	Description	Existing	DI	CI
1111	Oilseed and Grain Farming	X	0.4652	0.8963
1112	Vegetable and Melon Farming		0.5087	0.9089
1121	Cattle Ranching and Farming	X	0.4299	0.9114
2211	Electric Power Generation, Transmission and Distribution	X	0.6289	0.9081
3115	Dairy Product Manufacturing		0.6064	0.9096
3211	Sawmills and Wood Preservation		0.5603	0.8959
3212	Veneer, Plywood and Engineered Product Manufacturing		0.5748	0.9169
3241	Petroleum and Coal Products Manufacturing	X	0.7044	0.9061
3251	Basic Chemical Manufacturing		0.6208	0.9007
3252	Resin, Synthetic Rubber, and Artificial and Synthetic Fibers and Filaments Mar		0.6404	0.9018
3253	Pesticide, Fertilizer, and Other Agricultural Chemical Manufacturing		0.6122	0.9004
3254	Pharmaceutical and Medicine Manufacturing		0.7063	0.9194
3256	Soap, Cleaning Compound, and Toilet Preparation Manufacturing		0.6816	0.8872
3259	Other Chemical Product and Preparation Manufacturing		0.6045	0.9148
3273	Cement and Concrete Product Manufacturing		0.6045	0.8964
3313	Alumina and Aluminum Production and Processing		0.6117	0.8999
3341	Computer and Peripheral Equipment Manufacturing		0.6035	0.9245
3342	Communications Equipment Manufacturing		0.6075	0.9465
3344	Semiconductor and Other Electronic Component Manufacturing		0.7806	0.8902
3345	Navigational, Measuring, Electromedical, and Control Instruments Manufactu	X	0.6239	0.9006
3353	Electrical Equipment Manufacturing		0.6000	0.9199
4821	Rail Transportation		0.6401	0.9072
4879	Scenic and Sightseeing Transportation, Other	X	0.4690	0.9201
4882	Support Activities for Rail Transportation	X	0.5025	0.9034
4931	Warehousing and Storage	X	0.6204	0.8966
5121	Motion Picture and Video Industries	X	0.5434	0.9095
5179	Other Telecommunications		0.7318	0.9308
5182	Data Processing, Hosting, and Related Services	X	0.5216	0.9377
5417	Scientific Research and Development Services	X	0.6120	0.9123
5615	Travel Arrangement and Reservation Services		0.5126	0.8933
6117	Educational Support Services	X	0.4375	0.9146
6214	Outpatient Care Centers	X	0.5515	0.9134
6216	Home Health Care Services	X	0.3963	0.9163
6239	Other Residential Care Facilities	X	0.4429	0.9252
7139	Other Amusement and Recreation Industries	X	0.4659	0.9247
7212	RV (Recreational Vehicle) Parks and Recreational Camps	X	0.4587	0.9321

Table 6: Industries with High Desirability Index Scores (DI > .60)

NAICS4	Description	Existing	DI	CI
3344	Semiconductor and Other Electronic Component Manufacturing		0.7806	0.8902
5179	Other Telecommunications		0.7318	0.9308
2212	Natural Gas Distribution	X	0.7159	0.9235
3254	Pharmaceutical and Medicine Manufacturing		0.7063	0.9194
3241	Petroleum and Coal Products Manufacturing	X	0.7044	0.9061
3256	Soap, Cleaning Compound, and Toilet Preparation Manufacturing		0.6816	0.8872
4862	Pipeline Transportation of Natural Gas	X	0.6767	0.9015
4869	Other Pipeline Transportation	X	0.6760	0.8751
5152	Cable and Other Subscription Programming		0.6493	0.9209
4861	Pipeline Transportation of Crude Oil	X	0.6443	0.9770
3252	Resin, Synthetic Rubber, and Artificial and Synthetic Fibers and Filaments Manufacturing		0.6404	0.9018
4821	Rail Transportation		0.6401	0.9072
2211	Electric Power Generation, Transmission and Distribution	X	0.6289	0.9081
4248	Beer, Wine, and Distilled Alcoholic Beverage Merchant Wholesalers		0.6263	0.8957
3345	Navigational, Measuring, Electromedical, and Control Instruments Manufacturing	X	0.6239	0.9006
3251	Basic Chemical Manufacturing		0.6208	0.9007
4931	Warehousing and Storage	X	0.6204	0.8966
3315	Foundries		0.6195	0.9111
4242	Drugs and Druggists' Sundries Merchant Wholesalers		0.6176	0.9104
3255	Paint, Coating, and Adhesive Manufacturing		0.6175	0.9099
3253	Pesticide, Fertilizer, and Other Agricultural Chemical Manufacturing		0.6122	0.9004
5417	Scientific Research and Development Services	X	0.6120	0.9123
3313	Alumina and Aluminum Production and Processing		0.6117	0.8999
4244	Grocery and Related Product Merchant Wholesalers	X	0.6094	0.9138
3342	Communications Equipment Manufacturing		0.6075	0.9465
3115	Dairy Product Manufacturing		0.6064	0.9096
3259	Other Chemical Product and Preparation Manufacturing		0.6045	0.9148
3273	Cement and Concrete Product Manufacturing		0.6045	0.8964
3341	Computer and Peripheral Equipment Manufacturing		0.6035	0.9245
5241	Insurance Carriers	X	0.6031	0.9459
4241	Paper and Paper Product Merchant Wholesalers		0.6012	0.9110
4249	Miscellaneous Nondurable Goods Merchant Wholesalers		0.6008	0.9162
3353	Electrical Equipment Manufacturing		0.6000	0.9199

Table 7: Industries with High Compatibility Index Scores (CI > .60)

NAICS4	Description	Existing	DI	CI
4853	Taxi and Limousine Service	X	0.3548	0.9913
5617	Services to Buildings and Dwellings	X	0.3781	0.9866
4861	Pipeline Transportation of Crude Oil	X	0.6443	0.9770
8134	Civic and Social Organizations	X	0.4113	0.9764
8131	Religious Organizations		0.5128	0.9722
3149	Other Textile Product Mills		0.4366	0.9586
1122	Hog and Pig Farming	X	0.5105	0.9563
4533	Used Merchandise Stores	X	0.4076	0.9527
4541	Electronic Shopping and Mail-Order Houses	X	0.4713	0.9516
3342	Communications Equipment Manufacturing		0.6075	0.9465
5241	Insurance Carriers	X	0.6031	0.9459
2121	Coal Mining		0.5822	0.9443
4922	Local Messengers and Local Delivery	X	0.4168	0.9423
5412	Accounting, Tax Preparation, Bookkeeping, and Payroll Services	X	0.4495	0.9418
8132	Grantmaking and Giving Services	X	0.4713	0.9418
4543	Direct Selling Establishments	X	0.4442	0.9402
3261	Plastics Product Manufacturing	X	0.4393	0.9387
6114	Business Schools and Computer and Management Training	X	0.4261	0.9383
6116	Other Schools and Instruction	X	0.4293	0.9380
5182	Data Processing, Hosting, and Related Services	X	0.5216	0.9377
5151	Radio and Television Broadcasting	X	0.4436	0.9361
1119	Other Crop Farming	X	0.4031	0.9356
5122	Sound Recording Industries	X	0.4331	0.9350
2131	Support Activities for Mining	X	0.4649	0.9341
5232	Securities and Commodity Exchanges		0.5014	0.9338
2379	Other Heavy and Civil Engineering Construction	X	0.4656	0.9330
6231	Nursing Care Facilities (Skilled Nursing Facilities)	X	0.4689	0.9328
4251	Wholesale Electronic Markets and Agents and Brokers		0.5012	0.9328
5411	Legal Services	X	0.4791	0.9323
7212	RV (Recreational Vehicle) Parks and Recreational Camps	X	0.4587	0.9321
4247	Petroleum and Petroleum Products Merchant Wholesalers	X	0.5265	0.9318
4852	Interurban and Rural Bus Transportation	X	0.4078	0.9308
5179	Other Telecommunications		0.7318	0.9308
4872	Scenic and Sightseeing Transportation, Water	X	0.4801	0.9306
4512	Book Stores and News Dealers	X	0.4388	0.9305
4441	Building Material and Supplies Dealers	X	0.4709	0.9302
6241	Individual and Family Services	X	0.4035	0.9300
5613	Employment Services	X	0.4097	0.9300
1113	Fruit and Tree Nut Farming	X	0.4724	0.9299
4921	Couriers and Express Delivery Services	X	0.4406	0.9292
4511	Sporting Goods, Hobby, and Musical Instrument Stores	X	0.4613	0.9291
8112	Electronic and Precision Equipment Repair and Maintenance	X	0.3984	0.9290
4855	Charter Bus Industry	X	0.4248	0.9288
8139	Business, Professional, Labor, Political, and Similar Organizations	X	0.4798	0.9282
1152	Support Activities for Animal Production	X	0.3559	0.9281
5191	Other Information Services	X	0.4679	0.9280
4832	Inland Water Transportation	X	0.5402	0.9276
3359	Other Electrical Equipment and Component Manufacturing	X	0.4859	0.9275
5313	Activities Related to Real Estate	X	0.4858	0.9271

Table 7: Industries with High Compatibility Index Scores (CI > .60)

NAICS4	Description	Existing	DI	CI
3116	Animal Slaughtering and Processing	X	0.5080	0.9271
5112	Software Publishers	X	0.4660	0.9262
1124	Sheep and Goat Farming	X	0.4572	0.9258
1153	Support Activities for Forestry	X	0.3563	0.9256
5621	Waste Collection	X	0.3989	0.9253
6239	Other Residential Care Facilities	X	0.4429	0.9252
2361	Residential Building Construction	X	0.5110	0.9252
3231	Printing and Related Support Activities	X	0.4405	0.9251
4481	Clothing Stores	X	0.4940	0.9248
7139	Other Amusement and Recreation Industries	X	0.4659	0.9247
5251	Insurance and Employee Benefit Funds	X	0.4914	0.9247
3341	Computer and Peripheral Equipment Manufacturing		0.6035	0.9245
4531	Florists	X	0.4326	0.9242
3333	Commercial and Service Industry Machinery Manufacturing	X	0.4962	0.9242
5619	Other Support Services	X	0.4629	0.9241
1132	Forest Nurseries and Gathering of Forest Products	X	0.4739	0.9237
1129	Other Animal Production	X	0.4486	0.9236
2212	Natural Gas Distribution	X	0.7159	0.9235
5223	Activities Related to Credit Intermediation	X	0.5021	0.9230
3151	Apparel Knitting Mills		0.4204	0.9229
6113	Colleges, Universities, and Professional Schools		0.4957	0.9229
4542	Vending Machine Operators	X	0.4181	0.9227
8113	Commercial and Industrial Machinery and Equipment (except Automotive and Electronic) Repa	X	0.4652	0.9227
3363	Motor Vehicle Parts Manufacturing		0.5398	0.9219
7213	Rooming and Boarding Houses, Dormitories, and Workers' Camps	X	0.4399	0.9218
3379	Other Furniture Related Product Manufacturing		0.4808	0.9213
4412	Other Motor Vehicle Dealers	X	0.4759	0.9212
3131	Fiber, Yarn, and Thread Mills		0.4624	0.9210
5152	Cable and Other Subscription Programming		0.6493	0.9209
2372	Land Subdivision	X	0.5375	0.9208
3212	Veneer, Plywood, and Engineered Wood Product Manufacturing		0.5481	0.9208
3121	Beverage Manufacturing		0.4749	0.9205
2111	Oil and Gas Extraction	X	0.5219	0.9203
4879	Scenic and Sightseeing Transportation, Other	X	0.4690	0.9201
4239	Miscellaneous Durable Goods Merchant Wholesalers	X	0.5182	0.9201
3371	Household and Institutional Furniture and Kitchen Cabinet Manufacturing	X	0.4501	0.9199
3353	Electrical Equipment Manufacturing		0.6000	0.9199
5616	Investigation and Security Services	X	0.4136	0.9198
3369	Other Transportation Equipment Manufacturing		0.4675	0.9198
6111	Elementary and Secondary Schools		0.5066	0.9198
8122	Death Care Services	X	0.4043	0.9197
3324	Boiler, Tank, and Shipping Container Manufacturing		0.4766	0.9197
3254	Pharmaceutical and Medicine Manufacturing		0.7063	0.9194
3272	Glass and Glass Product Manufacturing		0.4846	0.9187
4859	Other Transit and Ground Passenger Transportation	X	0.4470	0.9186
1141	Fishing		0.5178	0.9182
5331	Lessors of Nonfinancial Intangible Assets (except Copyrighted Works)	X	0.5479	0.9174
3271	Clay Product and Refractory Manufacturing		0.5046	0.9174
5419	Other Professional, Scientific, and Technical Services	X	0.4634	0.9171

Table 7: Industries with High Compatibility Index Scores (CI > .60)

NAICS4	Description	Existing	DI	CI
8114	Personal and Household Goods Repair and Maintenance	X	0.4357	0.9170
3325	Hardware Manufacturing		0.5341	0.9170
3112	Grain and Oilseed Milling		0.5748	0.9169
5231	Securities and Commodity Contracts Intermediation and Brokerage		0.5889	0.9168
6216	Home Health Care Services	X	0.3963	0.9163
4249	Miscellaneous Nondurable Goods Merchant Wholesalers		0.6008	0.9162
1125	Aquaculture	X	0.4667	0.9160
3335	Metalworking Machinery Manufacturing		0.5003	0.9157
5416	Management, Scientific, and Technical Consulting Services	X	0.4852	0.9156
4245	Farm Product Raw Material Merchant Wholesalers		0.5599	0.9154
3343	Audio and Video Equipment Manufacturing		0.5682	0.9154
4811	Scheduled Air Transportation	X	0.5343	0.9153
3334	Ventilation, Heating, Air-Conditioning, and Commercial Refrigeration Equipment Manufacturin		0.4920	0.9153
6115	Technical and Trade Schools	X	0.4139	0.9151
3211	Sawmills and Wood Preservation	X	0.5116	0.9150
4881	Support Activities for Air Transportation	X	0.5184	0.9150
3219	Other Wood Product Manufacturing	X	0.5028	0.9149
3311	Iron and Steel Mills and Ferroalloy Manufacturing		0.5298	0.9148
3259	Other Chemical Product and Preparation Manufacturing		0.6045	0.9148
3122	Tobacco Manufacturing		0.5148	0.9147
6117	Educational Support Services	X	0.4375	0.9146
3372	Office Furniture (including Fixtures) Manufacturing		0.4615	0.9145
3113	Sugar and Confectionery Product Manufacturing		0.5863	0.9143
8121	Personal Care Services	X	0.4150	0.9142
1131	Timber Tract Operations	X	0.5140	0.9138
4244	Grocery and Related Product Merchant Wholesalers	X	0.6094	0.9138
2382	Building Equipment Contractors	X	0.4759	0.9137
3364	Aerospace Product and Parts Manufacturing	X	0.5268	0.9135
5614	Business Support Services	X	0.4506	0.9134
6214	Outpatient Care Centers	X	0.5515	0.9134
3119	Other Food Manufacturing	X	0.5803	0.9134
7112	Spectator Sports		0.4579	0.9134
3366	Ship and Boat Building		0.4765	0.9134
1151	Support Activities for Crop Production	X	0.3555	0.9133
3159	Apparel Accessories and Other Apparel Manufacturing	X	0.4124	0.9133
5418	Advertising, Public Relations, and Related Services	X	0.5297	0.9133
2123	Nonmetallic Mineral Mining and Quarrying	X	0.5442	0.9133
1142	Hunting and Trapping	X	0.4162	0.9130
4841	General Freight Trucking	X	0.5276	0.9126
9261	Administration of Economic Programs		0.5230	0.9125
4234	Professional and Commercial Equipment and Supplies Merchant Wholesalers	X	0.5395	0.9124
7121	Museums, Historical Sites, and Similar Institutions	X	0.4687	0.9123
5417	Scientific Research and Development Services	X	0.6120	0.9123
3132	Fabric Mills		0.4221	0.9122
3332	Industrial Machinery Manufacturing		0.5474	0.9118
6244	Child Day Care Services	X	0.5418	0.9117
3331	Agriculture, Construction, and Mining Machinery Manufacturing		0.5838	0.9116
5173	Wired and Wireless Telecommunications Carriers	X	0.5063	0.9115
1121	Cattle Ranching and Farming	X	0.4299	0.9114

Table 7: Industries with High Compatibility Index Scores (CI > .60)

NAICS4	Description	Existing	DI	CI
3279	Other Nonmetallic Mineral Product Manufacturing		0.5345	0.9114
5415	Computer Systems Design and Related Services	X	0.5188	0.9112
3352	Household Appliance Manufacturing		0.4966	0.9112
3315	Foundries		0.6195	0.9111
4241	Paper and Paper Product Merchant Wholesalers		0.6012	0.9110
3161	Leather and Hide Tanning and Finishing		0.4285	0.9109
3312	Steel Product Manufacturing from Purchased Steel		0.5923	0.9108
1114	Greenhouse, Nursery, and Floriculture Production		0.4721	0.9104
3391	Medical Equipment and Supplies Manufacturing		0.5375	0.9104
4242	Drugs and Druggists' Sundries Merchant Wholesalers		0.6176	0.9104
5312	Offices of Real Estate Agents and Brokers	X	0.4837	0.9102
4243	Apparel, Piece Goods, and Notions Merchant Wholesalers		0.5934	0.9101
3314	Nonferrous Metal (except Aluminum) Production and Processing	X	0.5720	0.9100
4442	Lawn and Garden Equipment and Supplies Stores	X	0.4683	0.9099
3255	Paint, Coating, and Adhesive Manufacturing		0.6175	0.9099
2373	Highway, Street, and Bridge Construction	X	0.4485	0.9098
3169	Other Leather and Allied Product Manufacturing		0.4430	0.9097
4431	Electronics and Appliance Stores	X	0.5044	0.9096
3365	Railroad Rolling Stock Manufacturing		0.5162	0.9096
3115	Dairy Product Manufacturing		0.6064	0.9096
5121	Motion Picture and Video Industries	X	0.5434	0.9095
5259	Other Investment Pools and Funds	X	0.5139	0.9094
3322	Cutlery and Handtool Manufacturing		0.5228	0.9093
5611	Office Administrative Services	X	0.4495	0.9092
4421	Furniture Stores	X	0.4474	0.9091
5413	Architectural, Engineering, and Related Services	X	0.5366	0.9091
1112	Vegetable and Melon Farming		0.5087	0.9089
3321	Forging and Stamping		0.4953	0.9088
4411	Automobile Dealers	X	0.4919	0.9087
4812	Nonscheduled Air Transportation	X	0.5280	0.9083
3361	Motor Vehicle Manufacturing		0.5619	0.9083
3362	Motor Vehicle Body and Trailer Manufacturing		0.5196	0.9082
2381	Foundation, Structure, and Building Exterior Contractors	X	0.4787	0.9081
2211	Electric Power Generation, Transmission and Distribution	X	0.6289	0.9081
5222	Nondepository Credit Intermediation	X	0.4871	0.9075
6215	Medical and Diagnostic Laboratories	X	0.4969	0.9075
3336	Engine, Turbine, and Power Transmission Equipment Manufacturing		0.5519	0.9075
6242	Community Food and Housing, and Emergency and Other Relief Services	X	0.3741	0.9074
4821	Rail Transportation		0.6401	0.9072
4236	Household Appliances and Electrical and Electronic Goods Merchant Wholesalers	X	0.5797	0.9071
3117	Seafood Product Preparation and Packaging		0.5378	0.9071
3346	Manufacturing and Reproducing Magnetic and Optical Media		0.5640	0.9070
8129	Other Personal Services	X	0.4310	0.9069
1133	Logging	X	0.5465	0.9067
4237	Hardware, and Plumbing and Heating Equipment and Supplies Merchant Wholesalers	X	0.5507	0.9067
3329	Other Fabricated Metal Product Manufacturing		0.4800	0.9067
3328	Coating, Engraving, Heat Treating, and Allied Activities		0.5329	0.9066
3241	Petroleum and Coal Products Manufacturing	X	0.7044	0.9061
4235	Metal and Mineral (except Petroleum) Merchant Wholesalers	X	0.5449	0.9060

Table 7: Industries with High Compatibility Index Scores (CI > .60)

NAICS4	Description	Existing	DI	CI
4851	Urban Transit Systems	X	0.4235	0.9058
5629	Remediation and Other Waste Management Services	X	0.4772	0.9058
4452	Specialty Food Stores	X	0.4712	0.9055
6232	Residential Intellectual and Developmental Disability, Mental Health, and Substance Abuse Fac	X	0.4874	0.9052
4883	Support Activities for Water Transportation	X	0.4469	0.9049
6212	Offices of Dentists	X	0.4450	0.9047
2213	Water, Sewage and Other Systems	X	0.4712	0.9045
3162	Footwear Manufacturing		0.4251	0.9041
2362	Nonresidential Building Construction	X	0.4560	0.9039
4233	Lumber and Other Construction Materials Merchant Wholesalers	X	0.5508	0.9039
4238	Machinery, Equipment, and Supplies Merchant Wholesalers	X	0.5419	0.9038
5311	Lessors of Real Estate	X	0.4804	0.9036
4882	Support Activities for Rail Transportation	X	0.5025	0.9034
2383	Building Finishing Contractors	X	0.5096	0.9034
7113	Promoters of Performing Arts, Sports, and Similar Events		0.4513	0.9034
5111	Newspaper, Periodical, Book, and Directory Publishers	X	0.5534	0.9031
5622	Waste Treatment and Disposal	X	0.4575	0.9029
4231	Motor Vehicle and Motor Vehicle Parts and Supplies Merchant Wholesalers		0.5769	0.9027
4246	Chemical and Allied Products Merchant Wholesalers		0.5814	0.9025
3152	Cut and Sew Apparel Manufacturing		0.4313	0.9023
5414	Specialized Design Services		0.5347	0.9023
4871	Scenic and Sightseeing Transportation, Land	X	0.4592	0.9022
3351	Electric Lighting Equipment Manufacturing		0.4846	0.9022
3326	Spring and Wire Product Manufacturing		0.4977	0.9020
3252	Resin, Synthetic Rubber, and Artificial and Synthetic Fibers and Filaments Manufacturing		0.6404	0.9018
4862	Pipeline Transportation of Natural Gas	X	0.6767	0.9015
3262	Rubber Product Manufacturing		0.4936	0.9012
3251	Basic Chemical Manufacturing		0.6208	0.9007
3345	Navigational, Measuring, Electromedical, and Control Instruments Manufacturing	X	0.6239	0.9006
7131	Amusement Parks and Arcades		0.4677	0.9004
3253	Pesticide, Fertilizer, and Other Agricultural Chemical Manufacturing		0.6122	0.9004
3399	Other Miscellaneous Manufacturing	X	0.4975	0.9002
3222	Converted Paper Product Manufacturing		0.5498	0.9001
3313	Alumina and Aluminum Production and Processing		0.6117	0.8999
6233	Continuing Care Retirement Communities and Assisted Living Facilities for the Elderly	X	0.4730	0.8998
3221	Pulp, Paper, and Paperboard Mills		0.5711	0.8998
4461	Health and Personal Care Stores	X	0.4457	0.8994
3274	Lime and Gypsum Product Manufacturing		0.5369	0.8993
6243	Vocational Rehabilitation Services	X	0.4666	0.8992
3114	Fruit and Vegetable Preserving and Specialty Food Manufacturing		0.5469	0.8991
5322	Consumer Goods Rental	X	0.5169	0.8985
4539	Other Miscellaneous Store Retailers	X	0.4391	0.8984
4422	Home Furnishings Stores	X	0.4514	0.8984
2389	Other Specialty Trade Contractors	X	0.4499	0.8982
3327	Machine Shops; Turned Product; and Screw, Nut, and Bolt Manufacturing		0.4946	0.8975
3323	Architectural and Structural Metals Manufacturing		0.4925	0.8971
3141	Textile Furnishings Mills		0.4089	0.8970
7223	Special Food Services	X	0.4433	0.8967
5511	Management of Companies and Enterprises	X	0.5050	0.8966

Table 7: Industries with High Compatibility Index Scores (CI > .60)

NAICS4	Description	Existing	DI	CI
4931	Warehousing and Storage	X	0.6204	0.8966
3273	Cement and Concrete Product Manufacturing		0.6045	0.8964
1111	Oilseed and Grain Farming	X	0.4652	0.8963
3111	Animal Food Manufacturing		0.5603	0.8959
3339	Other General Purpose Machinery Manufacturing		0.5850	0.8959
4248	Beer, Wine, and Distilled Alcoholic Beverage Merchant Wholesalers		0.6263	0.8957
5242	Agencies, Brokerages, and Other Insurance Related Activities	X	0.5289	0.8954
5615	Travel Arrangement and Reservation Services		0.5126	0.8933
4885	Freight Transportation Arrangement	X	0.5184	0.8930
4482	Shoe Stores	X	0.4387	0.8912
3344	Semiconductor and Other Electronic Component Manufacturing		0.7806	0.8902
7114	Agents and Managers for Artists, Athletes, Entertainers, and Other Public Figures		0.4607	0.8901
3133	Textile and Fabric Finishing and Fabric Coating Mills		0.4544	0.8900
5321	Automotive Equipment Rental and Leasing	X	0.5156	0.8899
5323	General Rental Centers	X	0.4719	0.8890
5239	Other Financial Investment Activities	X	0.5630	0.8882
3256	Soap, Cleaning Compound, and Toilet Preparation Manufacturing		0.6816	0.8872
4523	General Merchandise Stores, including Warehouse Clubs and Supercenters	X	0.4293	0.8869
3118	Bakeries and Tortilla Manufacturing	X	0.5114	0.8867
2371	Utility System Construction	X	0.4944	0.8849
7225	Restaurants and Other Eating Places	X	0.4572	0.8826
8133	Social Advocacy Organizations	X	0.5627	0.8822
8123	Drycleaning and Laundry Services	X	0.4038	0.8819
4451	Grocery Stores	X	0.4640	0.8791
5221	Depository Credit Intermediation	X	0.5153	0.8781
6112	Junior Colleges		0.4658	0.8767
4869	Other Pipeline Transportation	X	0.6760	0.8751
2122	Metal Ore Mining		0.5202	0.8680
4483	Jewelry, Luggage, and Leather Goods Stores	X	0.4430	0.8658
4889	Other Support Activities for Transportation	X	0.5255	0.8543

Table 8: Compatibility Index and Desirability Index Scores - All Industries

NAICS4	Description	Existing	DI	CI
1111	Oilseed and Grain Farming	X	0.4652	0.8963
1112	Vegetable and Melon Farming		0.5087	0.9089
1113	Fruit and Tree Nut Farming	X	0.4724	0.9299
1114	Greenhouse, Nursery, and Floriculture Production		0.4721	0.9104
1119	Other Crop Farming	X	0.4031	0.9356
1121	Cattle Ranching and Farming	X	0.4299	0.9114
1122	Hog and Pig Farming	X	0.5105	0.9563
1124	Sheep and Goat Farming	X	0.4572	0.9258
1125	Aquaculture	X	0.4667	0.9160
1129	Other Animal Production	X	0.4486	0.9236
1131	Timber Tract Operations	X	0.5140	0.9138
1132	Forest Nurseries and Gathering of Forest Products	X	0.4739	0.9237
1133	Logging	X	0.5465	0.9067
1141	Fishing		0.5178	0.9182
1142	Hunting and Trapping	X	0.4162	0.9130
1151	Support Activities for Crop Production	X	0.3555	0.9133
1152	Support Activities for Animal Production	X	0.3559	0.9281
1153	Support Activities for Forestry	X	0.3563	0.9256
2111	Oil and Gas Extraction	X	0.5219	0.9203
2121	Coal Mining		0.5822	0.9443
2122	Metal Ore Mining		0.5202	0.8680
2123	Nonmetallic Mineral Mining and Quarrying	X	0.5442	0.9133
2131	Support Activities for Mining	X	0.4649	0.9341
2211	Electric Power Generation, Transmission and Distribution	X	0.6289	0.9081
2212	Natural Gas Distribution	X	0.7159	0.9235
2213	Water, Sewage and Other Systems	X	0.4712	0.9045
2361	Residential Building Construction	X	0.5110	0.9252
2362	Nonresidential Building Construction	X	0.4560	0.9039
2371	Utility System Construction	X	0.4944	0.8849
2372	Land Subdivision	X	0.5375	0.9208
2373	Highway, Street, and Bridge Construction	X	0.4485	0.9098
2379	Other Heavy and Civil Engineering Construction	X	0.4656	0.9330
2381	Foundation, Structure, and Building Exterior Contractors	X	0.4787	0.9081
2382	Building Equipment Contractors	X	0.4759	0.9137
2383	Building Finishing Contractors	X	0.5096	0.9034
2389	Other Specialty Trade Contractors	X	0.4499	0.8982
3111	Animal Food Manufacturing		0.5603	0.8959
3112	Grain and Oilseed Milling		0.5748	0.9169
3113	Sugar and Confectionery Product Manufacturing		0.5863	0.9143
3114	Fruit and Vegetable Preserving and Specialty Food Manufacturing		0.5469	0.8991
3115	Dairy Product Manufacturing		0.6064	0.9096
3116	Animal Slaughtering and Processing	X	0.5080	0.9271
3117	Seafood Product Preparation and Packaging		0.5378	0.9071
3118	Bakeries and Tortilla Manufacturing	X	0.5114	0.8867
3119	Other Food Manufacturing	X	0.5803	0.9134
3121	Beverage Manufacturing		0.4749	0.9205
3122	Tobacco Manufacturing		0.5148	0.9147
3131	Fiber, Yarn, and Thread Mills		0.4624	0.9210
3132	Fabric Mills		0.4221	0.9122

Table 8: Compatibility Index and Desirability Index Scores - All Industries

NAICS4	Description	Existing	DI	CI
3133	Textile and Fabric Finishing and Fabric Coating Mills		0.4544	0.8900
3141	Textile Furnishings Mills		0.4089	0.8970
3149	Other Textile Product Mills		0.4366	0.9586
3151	Apparel Knitting Mills		0.4204	0.9229
3152	Cut and Sew Apparel Manufacturing		0.4313	0.9023
3159	Apparel Accessories and Other Apparel Manufacturing	X	0.4124	0.9133
3161	Leather and Hide Tanning and Finishing		0.4285	0.9109
3162	Footwear Manufacturing		0.4251	0.9041
3169	Other Leather and Allied Product Manufacturing		0.4430	0.9097
3211	Sawmills and Wood Preservation	X	0.5116	0.9150
3212	Veneer, Plywood, and Engineered Wood Product Manufacturing		0.5481	0.9208
3219	Other Wood Product Manufacturing	X	0.5028	0.9149
3221	Pulp, Paper, and Paperboard Mills		0.5711	0.8998
3222	Converted Paper Product Manufacturing		0.5498	0.9001
3231	Printing and Related Support Activities	X	0.4405	0.9251
3241	Petroleum and Coal Products Manufacturing	X	0.7044	0.9061
3251	Basic Chemical Manufacturing		0.6208	0.9007
3252	Resin, Synthetic Rubber, and Artificial and Synthetic Fibers and Filaments Manufacturing		0.6404	0.9018
3253	Pesticide, Fertilizer, and Other Agricultural Chemical Manufacturing		0.6122	0.9004
3254	Pharmaceutical and Medicine Manufacturing		0.7063	0.9194
3255	Paint, Coating, and Adhesive Manufacturing		0.6175	0.9099
3256	Soap, Cleaning Compound, and Toilet Preparation Manufacturing		0.6816	0.8872
3259	Other Chemical Product and Preparation Manufacturing		0.6045	0.9148
3261	Plastics Product Manufacturing	X	0.4393	0.9387
3262	Rubber Product Manufacturing		0.4936	0.9012
3271	Clay Product and Refractory Manufacturing		0.5046	0.9174
3272	Glass and Glass Product Manufacturing		0.4846	0.9187
3273	Cement and Concrete Product Manufacturing		0.6045	0.8964
3274	Lime and Gypsum Product Manufacturing		0.5369	0.8993
3279	Other Nonmetallic Mineral Product Manufacturing		0.5345	0.9114
3311	Iron and Steel Mills and Ferroalloy Manufacturing		0.5298	0.9148
3312	Steel Product Manufacturing from Purchased Steel		0.5923	0.9108
3313	Alumina and Aluminum Production and Processing		0.6117	0.8999
3314	Nonferrous Metal (except Aluminum) Production and Processing	X	0.5720	0.9100
3315	Foundries		0.6195	0.9111
3321	Forging and Stamping		0.4953	0.9088
3322	Cutlery and Handtool Manufacturing		0.5228	0.9093
3323	Architectural and Structural Metals Manufacturing		0.4925	0.8971
3324	Boiler, Tank, and Shipping Container Manufacturing		0.4766	0.9197
3325	Hardware Manufacturing		0.5341	0.9170
3326	Spring and Wire Product Manufacturing		0.4977	0.9020
3327	Machine Shops; Turned Product; and Screw, Nut, and Bolt Manufacturing		0.4946	0.8975
3328	Coating, Engraving, Heat Treating, and Allied Activities		0.5329	0.9066
3329	Other Fabricated Metal Product Manufacturing		0.4800	0.9067
3331	Agriculture, Construction, and Mining Machinery Manufacturing		0.5838	0.9116
3332	Industrial Machinery Manufacturing		0.5474	0.9118
3333	Commercial and Service Industry Machinery Manufacturing	X	0.4962	0.9242
3334	Ventilation, Heating, Air-Conditioning, and Commercial Refrigeration Equipment Manufacturing		0.4920	0.9153
3335	Metalworking Machinery Manufacturing		0.5003	0.9157

Table 8: Compatibility Index and Desirability Index Scores - All Industries

NAICS4	Description	Existing	DI	CI
3336	Engine, Turbine, and Power Transmission Equipment Manufacturing		0.5519	0.9075
3339	Other General Purpose Machinery Manufacturing		0.5850	0.8959
3341	Computer and Peripheral Equipment Manufacturing		0.6035	0.9245
3342	Communications Equipment Manufacturing		0.6075	0.9465
3343	Audio and Video Equipment Manufacturing		0.5682	0.9154
3344	Semiconductor and Other Electronic Component Manufacturing		0.7806	0.8902
3345	Navigational, Measuring, Electromedical, and Control Instruments Manufacturing	X	0.6239	0.9006
3346	Manufacturing and Reproducing Magnetic and Optical Media		0.5640	0.9070
3351	Electric Lighting Equipment Manufacturing		0.4846	0.9022
3352	Household Appliance Manufacturing		0.4966	0.9112
3353	Electrical Equipment Manufacturing		0.6000	0.9199
3359	Other Electrical Equipment and Component Manufacturing	X	0.4859	0.9275
3361	Motor Vehicle Manufacturing		0.5619	0.9083
3362	Motor Vehicle Body and Trailer Manufacturing		0.5196	0.9082
3363	Motor Vehicle Parts Manufacturing		0.5398	0.9219
3364	Aerospace Product and Parts Manufacturing	X	0.5268	0.9135
3365	Railroad Rolling Stock Manufacturing		0.5162	0.9096
3366	Ship and Boat Building		0.4765	0.9134
3369	Other Transportation Equipment Manufacturing		0.4675	0.9198
3371	Household and Institutional Furniture and Kitchen Cabinet Manufacturing	X	0.4501	0.9199
3372	Office Furniture (including Fixtures) Manufacturing		0.4615	0.9145
3379	Other Furniture Related Product Manufacturing		0.4808	0.9213
3391	Medical Equipment and Supplies Manufacturing		0.5375	0.9104
3399	Other Miscellaneous Manufacturing	X	0.4975	0.9002
4231	Motor Vehicle and Motor Vehicle Parts and Supplies Merchant Wholesalers		0.5769	0.9027
4233	Lumber and Other Construction Materials Merchant Wholesalers	X	0.5508	0.9039
4234	Professional and Commercial Equipment and Supplies Merchant Wholesalers	X	0.5395	0.9124
4235	Metal and Mineral (except Petroleum) Merchant Wholesalers	X	0.5449	0.9060
4236	Household Appliances and Electrical and Electronic Goods Merchant Wholesalers	X	0.5797	0.9071
4237	Hardware, and Plumbing and Heating Equipment and Supplies Merchant Wholesalers	X	0.5507	0.9067
4238	Machinery, Equipment, and Supplies Merchant Wholesalers	X	0.5419	0.9038
4239	Miscellaneous Durable Goods Merchant Wholesalers	X	0.5182	0.9201
4241	Paper and Paper Product Merchant Wholesalers		0.6012	0.9110
4242	Drugs and Druggists' Sundries Merchant Wholesalers		0.6176	0.9104
4243	Apparel, Piece Goods, and Notions Merchant Wholesalers		0.5934	0.9101
4244	Grocery and Related Product Merchant Wholesalers	X	0.6094	0.9138
4245	Farm Product Raw Material Merchant Wholesalers		0.5599	0.9154
4246	Chemical and Allied Products Merchant Wholesalers		0.5814	0.9025
4247	Petroleum and Petroleum Products Merchant Wholesalers	X	0.5265	0.9318
4248	Beer, Wine, and Distilled Alcoholic Beverage Merchant Wholesalers		0.6263	0.8957
4249	Miscellaneous Nondurable Goods Merchant Wholesalers		0.6008	0.9162
4251	Wholesale Electronic Markets and Agents and Brokers		0.5012	0.9328
4411	Automobile Dealers	X	0.4919	0.9087
4412	Other Motor Vehicle Dealers	X	0.4759	0.9212
4421	Furniture Stores	X	0.4474	0.9091
4422	Home Furnishings Stores	X	0.4514	0.8984
4431	Electronics and Appliance Stores	X	0.5044	0.9096
4441	Building Material and Supplies Dealers	X	0.4709	0.9302
4442	Lawn and Garden Equipment and Supplies Stores	X	0.4683	0.9099

Table 8: Compatibility Index and Desirability Index Scores - All Industries

NAICS4	Description	Existing	DI	CI
4451	Grocery Stores	X	0.4640	0.8791
4452	Specialty Food Stores	X	0.4712	0.9055
4461	Health and Personal Care Stores	X	0.4457	0.8994
4481	Clothing Stores	X	0.4940	0.9248
4482	Shoe Stores	X	0.4387	0.8912
4483	Jewelry, Luggage, and Leather Goods Stores	X	0.4430	0.8658
4511	Sporting Goods, Hobby, and Musical Instrument Stores	X	0.4613	0.9291
4512	Book Stores and News Dealers	X	0.4388	0.9305
4523	General Merchandise Stores, including Warehouse Clubs and Supercenters	X	0.4293	0.8869
4531	Florists	X	0.4326	0.9242
4533	Used Merchandise Stores	X	0.4076	0.9527
4539	Other Miscellaneous Store Retailers	X	0.4391	0.8984
4541	Electronic Shopping and Mail-Order Houses	X	0.4713	0.9516
4542	Vending Machine Operators	X	0.4181	0.9227
4543	Direct Selling Establishments	X	0.4442	0.9402
4811	Scheduled Air Transportation	X	0.5343	0.9153
4812	Nonscheduled Air Transportation	X	0.5280	0.9083
4821	Rail Transportation		0.6401	0.9072
4832	Inland Water Transportation	X	0.5402	0.9276
4841	General Freight Trucking	X	0.5276	0.9126
4851	Urban Transit Systems	X	0.4235	0.9058
4852	Interurban and Rural Bus Transportation	X	0.4078	0.9308
4853	Taxi and Limousine Service	X	0.3548	0.9913
4855	Charter Bus Industry	X	0.4248	0.9288
4859	Other Transit and Ground Passenger Transportation	X	0.4470	0.9186
4861	Pipeline Transportation of Crude Oil	X	0.6443	0.9770
4862	Pipeline Transportation of Natural Gas	X	0.6767	0.9015
4869	Other Pipeline Transportation	X	0.6760	0.8751
4871	Scenic and Sightseeing Transportation, Land	X	0.4592	0.9022
4872	Scenic and Sightseeing Transportation, Water	X	0.4801	0.9306
4879	Scenic and Sightseeing Transportation, Other	X	0.4690	0.9201
4881	Support Activities for Air Transportation	X	0.5184	0.9150
4882	Support Activities for Rail Transportation	X	0.5025	0.9034
4883	Support Activities for Water Transportation	X	0.4469	0.9049
4885	Freight Transportation Arrangement	X	0.5184	0.8930
4889	Other Support Activities for Transportation	X	0.5255	0.8543
4921	Couriers and Express Delivery Services	X	0.4406	0.9292
4922	Local Messengers and Local Delivery	X	0.4168	0.9423
4931	Warehousing and Storage	X	0.6204	0.8966
5111	Newspaper, Periodical, Book, and Directory Publishers	X	0.5534	0.9031
5112	Software Publishers	X	0.4660	0.9262
5121	Motion Picture and Video Industries	X	0.5434	0.9095
5122	Sound Recording Industries	X	0.4331	0.9350
5151	Radio and Television Broadcasting	X	0.4436	0.9361
5152	Cable and Other Subscription Programming		0.6493	0.9209
5173	Wired and Wireless Telecommunications Carriers	X	0.5063	0.9115
5179	Other Telecommunications		0.7318	0.9308
5182	Data Processing, Hosting, and Related Services	X	0.5216	0.9377
5191	Other Information Services	X	0.4679	0.9280

Table 8: Compatibility Index and Desirability Index Scores - All Industries

NAICS4	Description	Existing	DI	CI
5221	Depository Credit Intermediation	X	0.5153	0.8781
5222	Nondepository Credit Intermediation	X	0.4871	0.9075
5223	Activities Related to Credit Intermediation	X	0.5021	0.9230
5231	Securities and Commodity Contracts Intermediation and Brokerage		0.5889	0.9168
5232	Securities and Commodity Exchanges		0.5014	0.9338
5239	Other Financial Investment Activities	X	0.5630	0.8882
5241	Insurance Carriers	X	0.6031	0.9459
5242	Agencies, Brokerages, and Other Insurance Related Activities	X	0.5289	0.8954
5251	Insurance and Employee Benefit Funds	X	0.4914	0.9247
5259	Other Investment Pools and Funds	X	0.5139	0.9094
5311	Lessors of Real Estate	X	0.4804	0.9036
5312	Offices of Real Estate Agents and Brokers	X	0.4837	0.9102
5313	Activities Related to Real Estate	X	0.4858	0.9271
5321	Automotive Equipment Rental and Leasing	X	0.5156	0.8899
5322	Consumer Goods Rental	X	0.5169	0.8985
5323	General Rental Centers	X	0.4719	0.8890
5331	Lessors of Nonfinancial Intangible Assets (except Copyrighted Works)	X	0.5479	0.9174
5411	Legal Services	X	0.4791	0.9323
5412	Accounting, Tax Preparation, Bookkeeping, and Payroll Services	X	0.4495	0.9418
5413	Architectural, Engineering, and Related Services	X	0.5366	0.9091
5414	Specialized Design Services		0.5347	0.9023
5415	Computer Systems Design and Related Services	X	0.5188	0.9112
5416	Management, Scientific, and Technical Consulting Services	X	0.4852	0.9156
5417	Scientific Research and Development Services	X	0.6120	0.9123
5418	Advertising, Public Relations, and Related Services	X	0.5297	0.9133
5419	Other Professional, Scientific, and Technical Services	X	0.4634	0.9171
5511	Management of Companies and Enterprises	X	0.5050	0.8966
5611	Office Administrative Services	X	0.4495	0.9092
5613	Employment Services	X	0.4097	0.9300
5614	Business Support Services	X	0.4506	0.9134
5615	Travel Arrangement and Reservation Services		0.5126	0.8933
5616	Investigation and Security Services	X	0.4136	0.9198
5617	Services to Buildings and Dwellings	X	0.3781	0.9866
5619	Other Support Services	X	0.4629	0.9241
5621	Waste Collection	X	0.3989	0.9253
5622	Waste Treatment and Disposal	X	0.4575	0.9029
5629	Remediation and Other Waste Management Services	X	0.4772	0.9058
6111	Elementary and Secondary Schools		0.5066	0.9198
6112	Junior Colleges		0.4658	0.8767
6113	Colleges, Universities, and Professional Schools		0.4957	0.9229
6114	Business Schools and Computer and Management Training	X	0.4261	0.9383
6115	Technical and Trade Schools	X	0.4139	0.9151
6116	Other Schools and Instruction	X	0.4293	0.9380
6117	Educational Support Services	X	0.4375	0.9146
6212	Offices of Dentists	X	0.4450	0.9047
6214	Outpatient Care Centers	X	0.5515	0.9134
6215	Medical and Diagnostic Laboratories	X	0.4969	0.9075
6216	Home Health Care Services	X	0.3963	0.9163
6231	Nursing Care Facilities (Skilled Nursing Facilities)	X	0.4689	0.9328

Table 8: Compatibility Index and Desirability Index Scores - All Industries

NAICS4	Description	Existing	DI	CI
6232	Residential Intellectual and Developmental Disability, Mental Health, and Substance Abuse Faci	X	0.4874	0.9052
6233	Continuing Care Retirement Communities and Assisted Living Facilities for the Elderly	X	0.4730	0.8998
6239	Other Residential Care Facilities	X	0.4429	0.9252
6241	Individual and Family Services	X	0.4035	0.9300
6242	Community Food and Housing, and Emergency and Other Relief Services	X	0.3741	0.9074
6243	Vocational Rehabilitation Services	X	0.4666	0.8992
6244	Child Day Care Services	X	0.5418	0.9117
7112	Spectator Sports		0.4579	0.9134
7113	Promoters of Performing Arts, Sports, and Similar Events		0.4513	0.9034
7114	Agents and Managers for Artists, Athletes, Entertainers, and Other Public Figures		0.4607	0.8901
7121	Museums, Historical Sites, and Similar Institutions	X	0.4687	0.9123
7131	Amusement Parks and Arcades		0.4677	0.9004
7139	Other Amusement and Recreation Industries	X	0.4659	0.9247
7212	RV (Recreational Vehicle) Parks and Recreational Camps	X	0.4587	0.9321
7213	Rooming and Boarding Houses, Dormitories, and Workers' Camps	X	0.4399	0.9218
7223	Special Food Services	X	0.4433	0.8967
7225	Restaurants and Other Eating Places	X	0.4572	0.8826
8112	Electronic and Precision Equipment Repair and Maintenance	X	0.3984	0.9290
8113	Commercial and Industrial Machinery and Equipment (except Automotive and Electronic) Repa	X	0.4652	0.9227
8114	Personal and Household Goods Repair and Maintenance	X	0.4357	0.9170
8121	Personal Care Services	X	0.4150	0.9142
8122	Death Care Services	X	0.4043	0.9197
8123	Drycleaning and Laundry Services	X	0.4038	0.8819
8129	Other Personal Services	X	0.4310	0.9069
8131	Religious Organizations		0.5128	0.9722
8132	Grantmaking and Giving Services	X	0.4713	0.9418
8133	Social Advocacy Organizations	X	0.5627	0.8822
8134	Civic and Social Organizations	X	0.4113	0.9764
8139	Business, Professional, Labor, Political, and Similar Organizations	X	0.4798	0.9282
9261	Administration of Economic Programs		0.5230	0.9125