

Table 1: Mora County, NM Community Development Goal Rankings

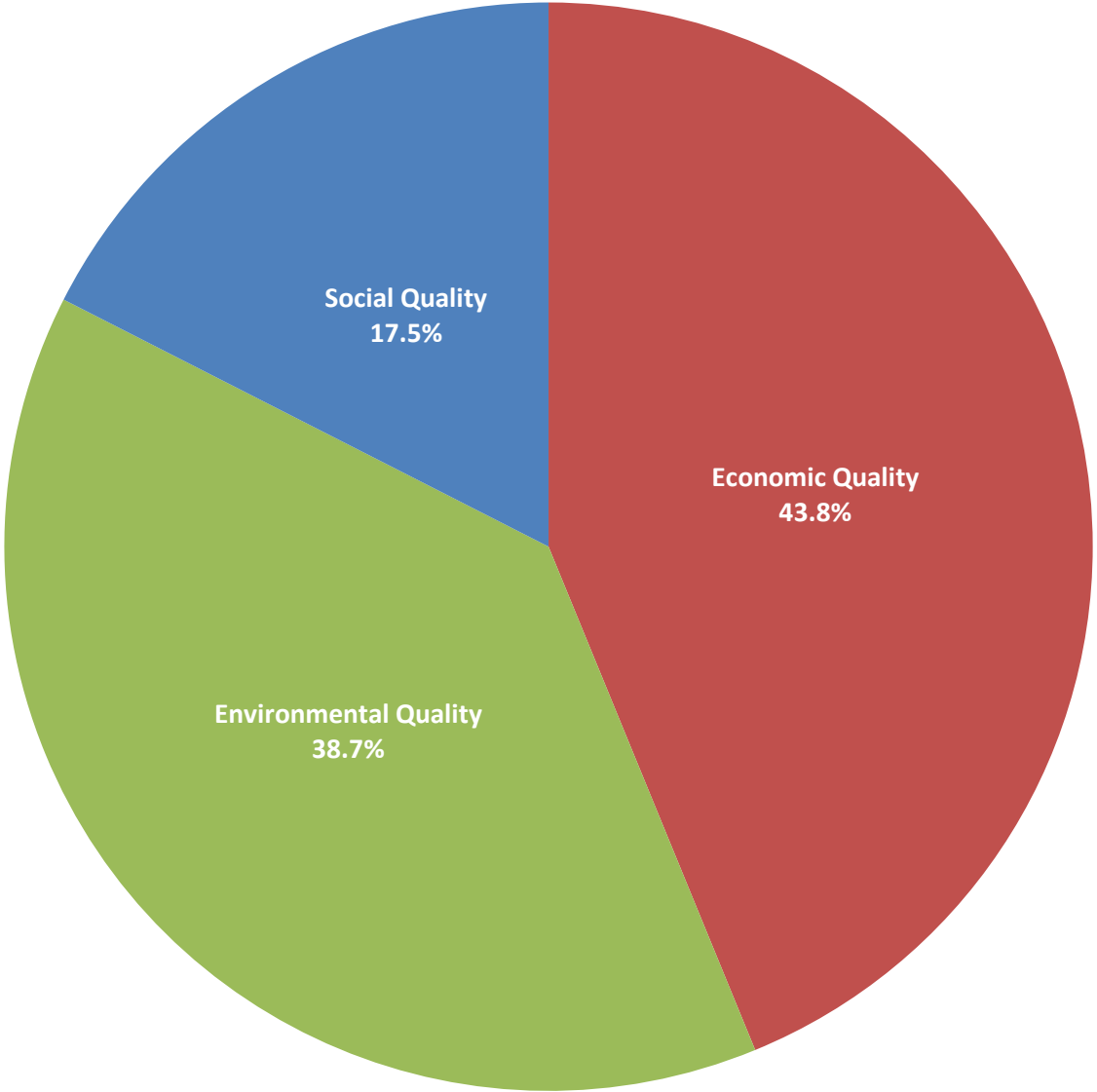
<i>Goal</i>	<i>Weight</i>	<i>Rank</i>
Economic Quality	43.80%	1
Environmental Quality	38.70%	2
Social Quality	17.50%	3

Table 2: Community Development Indicator Rankings

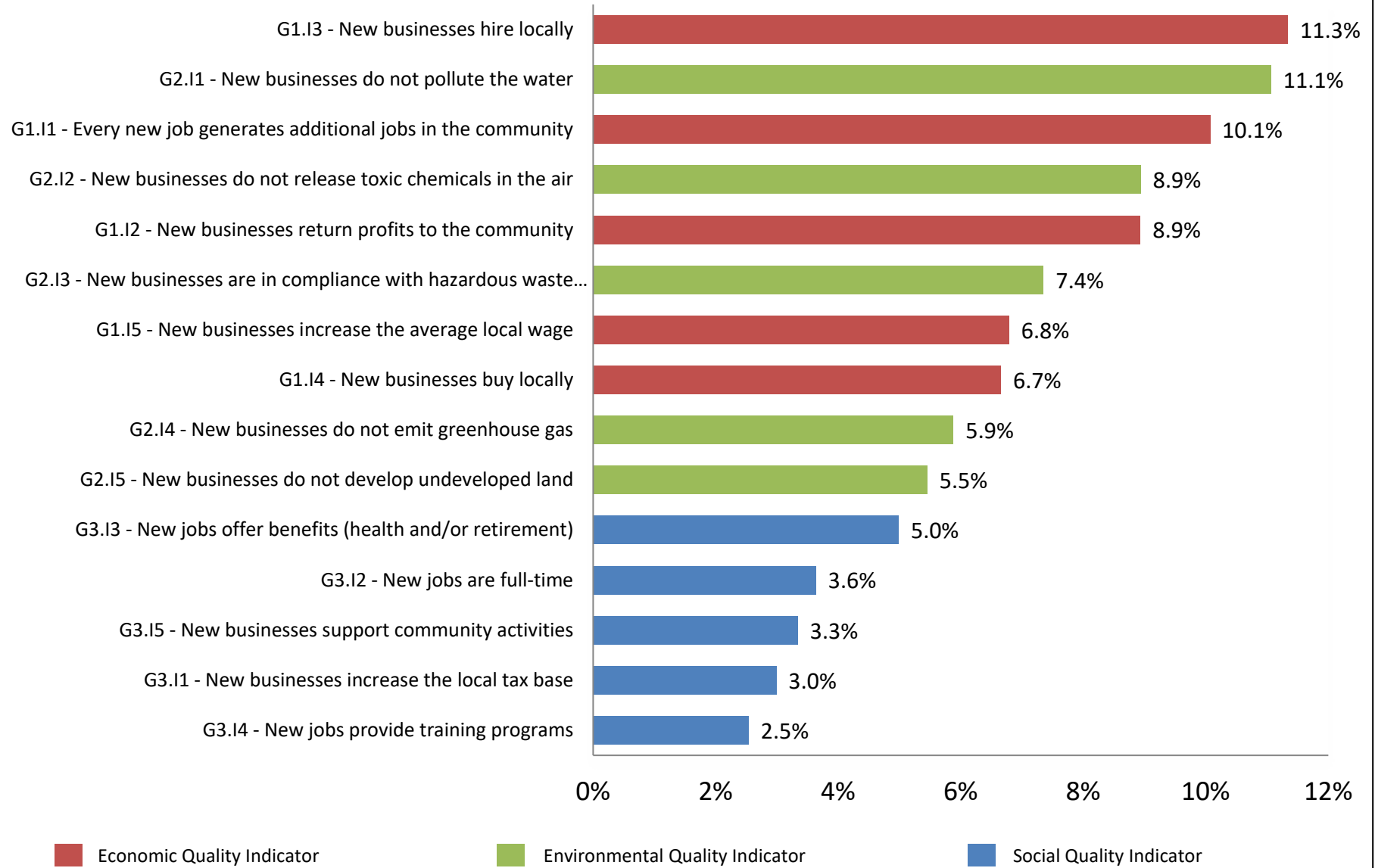
<i>Indicator</i>	<i>Weight</i>	<i>Rank</i>
G1.I1 - Every new job generates additional jobs in the community	10.07%	3
G1.I2 - New businesses return profits to the community	8.94%	5
G1.I3 - New businesses hire locally	11.34%	1
G1.I4 - New businesses buy locally	6.66%	8
G1.I5 - New businesses increase the average local wage	6.79%	7
G2.I1 - New businesses do not pollute the water	11.07%	2
G2.I2 - New businesses do not release toxic chemicals in the air	8.94%	4
G2.I3 - New businesses are in compliance with hazardous waste management	7.35%	6
G2.I4 - New businesses do not emit greenhouse gas	5.88%	9
G2.I5 - New businesses do not develop undeveloped land	5.46%	10
G3.I1 - New businesses increase the local tax base	2.99%	14
G3.I2 - New jobs are full-time	3.64%	12
G3.I3 - New jobs offer benefits (health and/or retirement)	4.99%	11
G3.I4 - New jobs provide training programs	2.54%	15
G3.I5 - New businesses support community activities	3.34%	13

Number of observations	17
------------------------	----

**Figure 1: Community Development Goal Weights:
Mora County, NM**



**Figure 2: Community Development Indicator Weights:
Mora County, NM**



**Figure 4: Mora County, NM ASAP Results
High Index NAICS**

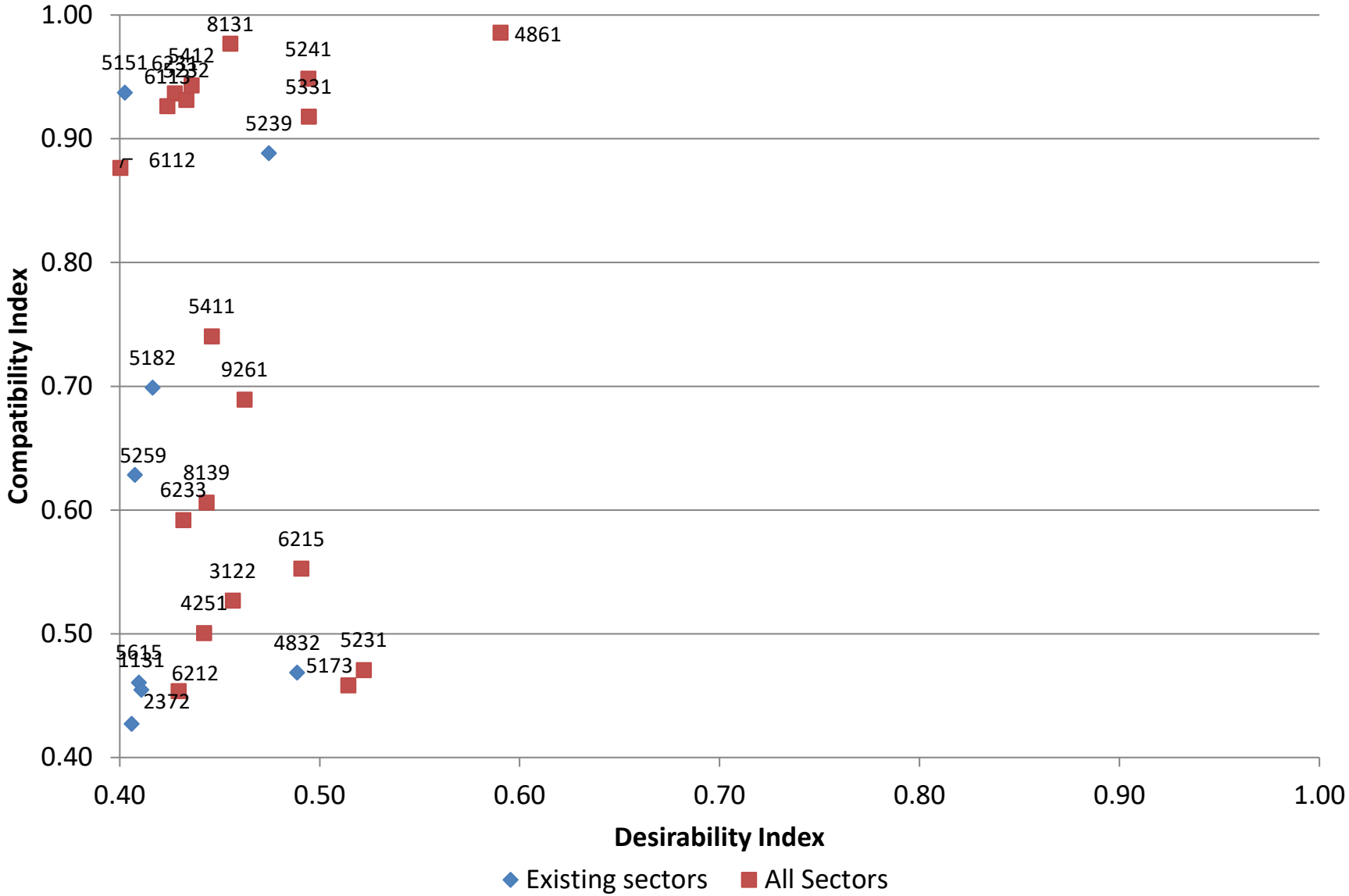


Figure 5: Mora County, NM ASAP Results

Target NAICS

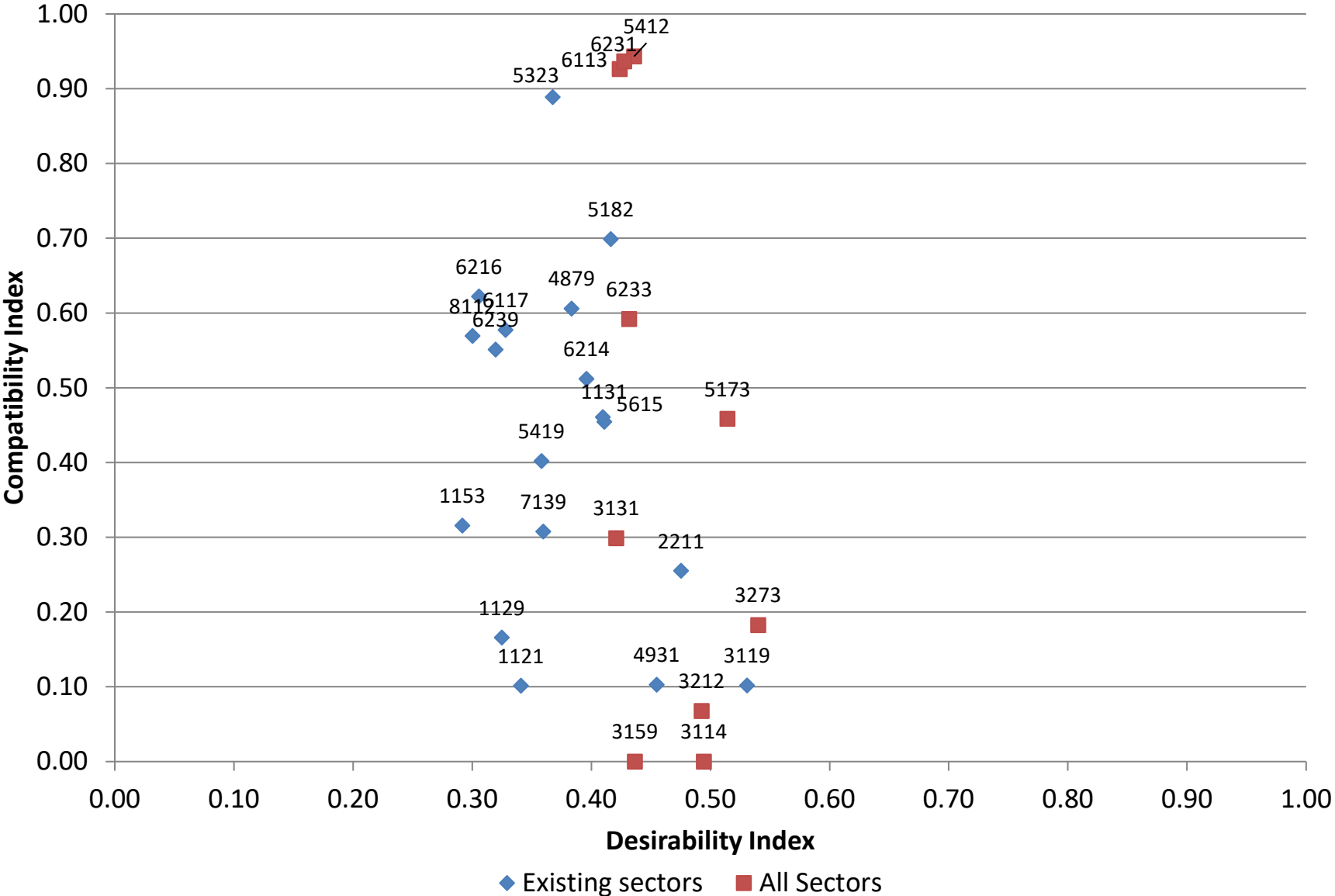


Table 3: Industries with High Desirability and Compatibility Index Scores (Index > .40)

NAICS4	Description	Existing	DI	CI
4861	Pipeline Transportation of Crude Oil		0.5905	0.9857
8131	Religious Organizations		0.4553	0.9769
5241	Insurance Carriers		0.4943	0.9485
5412	Accounting, Tax Preparation, Bookkeeping, and Payroll Services		0.4359	0.9432
5151	Radio and Television Broadcasting	X	0.4025	0.9372
6231	Nursing Care Facilities (Skilled Nursing Facilities)		0.4276	0.9366
5232	Securities and Commodity Exchanges		0.4333	0.9314
6113	Colleges, Universities, and Professional Schools		0.4238	0.9264
5331	Lessors of Nonfinancial Intangible Assets (except Copyrighted Works)		0.4945	0.9178
5239	Other Financial Investment Activities	X	0.4746	0.8883
6112	Junior Colleges		0.4003	0.8765
5411	Legal Services		0.4460	0.7403
5182	Data Processing, Hosting, and Related Services	X	0.4164	0.6988
9261	Administration of Economic Programs		0.4624	0.6891
5259	Other Investment Pools and Funds	X	0.4076	0.6284
8139	Business, Professional, Labor, Political, and Similar Organizations		0.4434	0.6060
6233	Continuing Care Retirement Communities and Assisted Living Facilities for the Elderly		0.4318	0.5919
6215	Medical and Diagnostic Laboratories		0.4908	0.5527
3122	Tobacco Manufacturing		0.4565	0.5267
4251	Wholesale Electronic Markets and Agents and Brokers		0.4422	0.5006
5231	Securities and Commodity Contracts Intermediation and Brokerage		0.5220	0.4707
4832	Inland Water Transportation	X	0.4887	0.4687
5615	Travel Arrangement and Reservation Services	X	0.4096	0.4606
5173	Wired and Wireless Telecommunications Carriers		0.5143	0.4584
1131	Timber Tract Operations	X	0.4108	0.4546
6212	Offices of Dentists		0.4294	0.4537
2372	Land Subdivision	X	0.4059	0.4271

Table 4: Industries with High Desirability and Compatibility Index Scores (Index > .40)

NAICS3	Description	Count
113	Forest and Logging	1
114	Fishing, Hunting and Trapping	1
115	Support Activities for Agriculture and Forestry	1
311	Food Manufacturing	2
313	Textile Mills	1
315	Apparel Manufacturing	1
321	Wood Product Manufacturing	1
327	Nonmetallic Mineral Product Manufacturing	1
487	Scenic and Sightseeing Transportation	1
488	Support Activities for Transportation	1
493	Warehousing and Storage	1
517	Telecommunications	1
518	Data Processing, Hosting, and Related Services	1
532	Rental and Leasing Services	1
541	Professional, Scientific, and Technical Services	2
561	Administrative and Support Services	1
611	Educational Services	5
621	Ambulatory Health Care Services	2
623	Nursing and Residential Care Facilities	3
811	Repair and Maintenance	1

Table 5: Mora County, NM Target Industries

NAICS4	Description	Existing	DI	CI
1121	Cattle Ranching and Farming	X	0.3408	0.1015
1129	Other Animal Production	X	0.3248	0.1659
1131	Timber Tract Operations	X	0.4108	0.4546
1153	Support Activities for Forestry	X	0.2918	0.3156
2211	Electric Power Generation, Transmission and Distribution	X	0.4753	0.2551
3114	Fruit and Vegetable Preserving and Specialty Food Manufacturing		0.4944	0.0000
3119	Other Food Manufacturing	X	0.5307	0.1018
3131	Fiber, Yarn, and Thread Mills		0.4209	0.2988
3159	Apparel Accessories and Other Apparel Manufacturing		0.4366	0.0000
3212	Veneer, Plywood, and Engineered Wood Product Manufacturing		0.4926	0.0675
3273	Cement and Concrete Product Manufacturing		0.5400	0.1826
4879	Scenic and Sightseeing Transportation, Other	X	0.3835	0.6060
4931	Warehousing and Storage	X	0.4548	0.1027
5173	Wired and Wireless Telecommunications Carriers		0.5143	0.4584
5182	Data Processing, Hosting, and Related Services	X	0.4164	0.6988
5323	General Rental Centers	X	0.3675	0.8888
5412	Accounting, Tax Preparation, Bookkeeping, and Payroll Services		0.4359	0.9432
5419	Other Professional, Scientific, and Technical Services	X	0.3581	0.4020
5615	Travel Arrangement and Reservation Services	X	0.4096	0.4606
6113	Colleges, Universities, and Professional Schools		0.4238	0.9264
6117	Educational Support Services	X	0.3280	0.5772
6214	Outpatient Care Centers	X	0.3960	0.5120
6216	Home Health Care Services	X	0.3056	0.6221
6231	Nursing Care Facilities (Skilled Nursing Facilities)		0.4276	0.9366
6233	Continuing Care Retirement Communities and Assisted Living Facilities for the E		0.4318	0.5919
6239	Other Residential Care Facilities	X	0.3197	0.5509
7139	Other Amusement and Recreation Industries	X	0.3597	0.3076
8112	Electronic and Precision Equipment Repair and Maintenance	X	0.3002	0.5694

Table 6: Industries with High Desirability Index Scores (DI > .40)

NAICS4	Description	Existing	DI	CI
3344	Semiconductor and Other Electronic Component Manufacturing		0.7482	0.0619
2212	Natural Gas Distribution		0.7087	0.0000
3254	Pharmaceutical and Medicine Manufacturing		0.6629	0.0000
3256	Soap, Cleaning Compound, and Toilet Preparation Manufacturing		0.6350	0.0865
4862	Pipeline Transportation of Natural Gas		0.6292	0.0000
3241	Petroleum and Coal Products Manufacturing	X	0.6290	0.1737
4869	Other Pipeline Transportation		0.6242	0.0000
4244	Grocery and Related Product Merchant Wholesalers		0.6133	0.2348
3345	Navigational, Measuring, Electromedical, and Control Instruments Manufacturing		0.5984	0.0698
3252	Resin, Synthetic Rubber, and Artificial and Synthetic Fibers and Filaments Manufacturing		0.5926	0.1448
4861	Pipeline Transportation of Crude Oil		0.5905	0.9857
5152	Cable and Other Subscription Programming		0.5862	0.2489
4821	Rail Transportation		0.5745	0.2280
3315	Foundries		0.5724	0.1494
3255	Paint, Coating, and Adhesive Manufacturing		0.5717	0.0285
3251	Basic Chemical Manufacturing		0.5715	0.1508
3313	Alumina and Aluminum Production and Processing		0.5662	0.0297
3253	Pesticide, Fertilizer, and Other Agricultural Chemical Manufacturing		0.5625	0.0667
3342	Communications Equipment Manufacturing		0.5611	0.3541
4248	Beer, Wine, and Distilled Alcoholic Beverage Merchant Wholesalers		0.5601	0.1178
3115	Dairy Product Manufacturing		0.5589	0.0000
3259	Other Chemical Product and Preparation Manufacturing		0.5554	0.0000
3353	Electrical Equipment Manufacturing		0.5543	0.2771
3341	Computer and Peripheral Equipment Manufacturing		0.5480	0.2055
3312	Steel Product Manufacturing from Purchased Steel		0.5479	0.2131
4242	Drugs and Druggists' Sundries Merchant Wholesalers		0.5452	0.0979
3331	Agriculture, Construction, and Mining Machinery Manufacturing		0.5411	0.1435
3273	Cement and Concrete Product Manufacturing		0.5400	0.1826
3339	Other General Purpose Machinery Manufacturing		0.5376	0.0621
5179	Other Telecommunications	X	0.5368	0.3161
4249	Miscellaneous Nondurable Goods Merchant Wholesalers		0.5367	0.0966
4241	Paper and Paper Product Merchant Wholesalers		0.5342	0.1642
3116	Animal Slaughtering and Processing		0.5325	0.1297
3113	Sugar and Confectionery Product Manufacturing		0.5318	0.0000
5413	Architectural, Engineering, and Related Services		0.5316	0.1880
3119	Other Food Manufacturing	X	0.5307	0.1018
4243	Apparel, Piece Goods, and Notions Merchant Wholesalers		0.5291	0.1293
5111	Newspaper, Periodical, Book, and Directory Publishers		0.5285	0.2864
4236	Household Appliances and Electrical and Electronic Goods Merchant Wholesalers		0.5278	0.0565
3314	Nonferrous Metal (except Aluminum) Production and Processing		0.5266	0.0194
3361	Motor Vehicle Manufacturing		0.5242	0.0000
3221	Pulp, Paper, and Paperboard Mills		0.5236	0.1928
5231	Securities and Commodity Contracts Intermediation and Brokerage		0.5220	0.4707
3112	Grain and Oilseed Milling		0.5198	0.1120
3343	Audio and Video Equipment Manufacturing		0.5145	0.0243
5173	Wired and Wireless Telecommunications Carriers		0.5143	0.4584
2121	Coal Mining		0.5137	0.0345
4246	Chemical and Allied Products Merchant Wholesalers		0.5130	0.0509
3346	Manufacturing and Reproducing Magnetic and Optical Media		0.5122	0.1492

Table 6: Industries with High Desirability Index Scores (DI > .40)

NAICS4	Description	Existing	DI	CI
4231	Motor Vehicle and Motor Vehicle Parts and Supplies Merchant Wholesalers		0.5104	0.1035
5418	Advertising, Public Relations, and Related Services		0.5091	0.2617
3111	Animal Food Manufacturing		0.5074	0.0279
3363	Motor Vehicle Parts Manufacturing		0.5054	0.0000
1133	Logging	X	0.5050	0.2886
3332	Industrial Machinery Manufacturing		0.5041	0.0000
3336	Engine, Turbine, and Power Transmission Equipment Manufacturing		0.5025	0.0342
3222	Converted Paper Product Manufacturing		0.5014	0.0000
3211	Sawmills and Wood Preservation	X	0.4992	0.1048
5331	Lessors of Nonfinancial Intangible Assets (except Copyrighted Works)		0.4945	0.9178
3114	Fruit and Vegetable Preserving and Specialty Food Manufacturing		0.4944	0.0000
5241	Insurance Carriers		0.4943	0.9485
5417	Scientific Research and Development Services	X	0.4941	0.1886
4245	Farm Product Raw Material Merchant Wholesalers		0.4929	0.0000
3333	Commercial and Service Industry Machinery Manufacturing		0.4927	0.0000
3212	Veneer, Plywood, and Engineered Wood Product Manufacturing		0.4926	0.0675
6215	Medical and Diagnostic Laboratories		0.4908	0.5527
5121	Motion Picture and Video Industries	X	0.4892	0.3160
4832	Inland Water Transportation	X	0.4887	0.4687
5416	Management, Scientific, and Technical Consulting Services		0.4878	0.2841
4247	Petroleum and Petroleum Products Merchant Wholesalers		0.4867	0.3758
3325	Hardware Manufacturing		0.4864	0.0442
2123	Nonmetallic Mineral Mining and Quarrying	X	0.4860	0.0935
3364	Aerospace Product and Parts Manufacturing	X	0.4854	0.0980
3117	Seafood Product Preparation and Packaging		0.4849	0.0996
3328	Coating, Engraving, Heat Treating, and Allied Activities		0.4819	0.1382
3362	Motor Vehicle Body and Trailer Manufacturing		0.4815	0.0366
3391	Medical Equipment and Supplies Manufacturing		0.4813	0.1935
2211	Electric Power Generation, Transmission and Distribution	X	0.4753	0.2551
3311	Iron and Steel Mills and Ferroalloy Manufacturing		0.4748	0.0000
5239	Other Financial Investment Activities	X	0.4746	0.8883
3274	Lime and Gypsum Product Manufacturing		0.4733	0.0000
3322	Cutlery and Handtool Manufacturing		0.4733	0.0320
3365	Railroad Rolling Stock Manufacturing		0.4722	0.2296
3279	Other Nonmetallic Mineral Product Manufacturing		0.4703	0.1999
4811	Scheduled Air Transportation	X	0.4687	0.0520
3118	Bakeries and Tortilla Manufacturing	X	0.4669	0.0000
5414	Specialized Design Services		0.4661	0.2876
2122	Metal Ore Mining		0.4654	0.0000
3399	Other Miscellaneous Manufacturing	X	0.4640	0.0856
4812	Nonscheduled Air Transportation	X	0.4624	0.1949
9261	Administration of Economic Programs		0.4624	0.6891
5122	Sound Recording Industries		0.4617	0.2603
5321	Automotive Equipment Rental and Leasing		0.4615	0.0000
3122	Tobacco Manufacturing		0.4565	0.5267
3219	Other Wood Product Manufacturing		0.4556	0.0246
3335	Metalworking Machinery Manufacturing		0.4554	0.0952
8131	Religious Organizations		0.4553	0.9769
4931	Warehousing and Storage	X	0.4548	0.1027

Table 6: Industries with High Desirability Index Scores (DI > .40)

NAICS4	Description	Existing	DI	CI
4233	Lumber and Other Construction Materials Merchant Wholesalers	X	0.4516	0.0935
6111	Elementary and Secondary Schools		0.4499	0.2664
4237	Hardware, and Plumbing and Heating Equipment and Supplies Merchant Wholesalers	X	0.4494	0.0774
1141	Fishing		0.4492	0.2349
3326	Spring and Wire Product Manufacturing		0.4492	0.0570
4234	Professional and Commercial Equipment and Supplies Merchant Wholesalers	X	0.4473	0.1187
8133	Social Advocacy Organizations	X	0.4461	0.1787
5411	Legal Services		0.4460	0.7403
4889	Other Support Activities for Transportation	X	0.4453	0.0000
4235	Metal and Mineral (except Petroleum) Merchant Wholesalers	X	0.4451	0.1249
3321	Forging and Stamping		0.4447	0.0000
3327	Machine Shops; Turned Product; and Screw, Nut, and Bolt Manufacturing		0.4447	0.0000
3262	Rubber Product Manufacturing		0.4438	0.3819
3323	Architectural and Structural Metals Manufacturing		0.4437	0.0000
3352	Household Appliance Manufacturing		0.4434	0.0000
8139	Business, Professional, Labor, Political, and Similar Organizations		0.4434	0.6060
4238	Machinery, Equipment, and Supplies Merchant Wholesalers	X	0.4429	0.0320
3334	Ventilation, Heating, Air-Conditioning, and Commercial Refrigeration Equipment Manufacturing		0.4426	0.0000
4251	Wholesale Electronic Markets and Agents and Brokers		0.4422	0.5006
4841	General Freight Trucking	X	0.4399	0.2209
3159	Apparel Accessories and Other Apparel Manufacturing		0.4366	0.0000
5412	Accounting, Tax Preparation, Bookkeeping, and Payroll Services		0.4359	0.9432
4881	Support Activities for Air Transportation	X	0.4355	0.1199
3366	Ship and Boat Building		0.4340	0.1206
3351	Electric Lighting Equipment Manufacturing		0.4334	0.1125
5232	Securities and Commodity Exchanges		0.4333	0.9314
4885	Freight Transportation Arrangement	X	0.4325	0.0000
6233	Continuing Care Retirement Communities and Assisted Living Facilities for the Elderly		0.4318	0.5919
3329	Other Fabricated Metal Product Manufacturing		0.4307	0.1834
2111	Oil and Gas Extraction	X	0.4299	0.2859
6212	Offices of Dentists		0.4294	0.4537
3324	Boiler, Tank, and Shipping Container Manufacturing		0.4279	0.0931
6231	Nursing Care Facilities (Skilled Nursing Facilities)		0.4276	0.9366
3369	Other Transportation Equipment Manufacturing		0.4257	0.0000
3379	Other Furniture Related Product Manufacturing		0.4256	0.1219
5611	Office Administrative Services		0.4255	0.3133
6113	Colleges, Universities, and Professional Schools		0.4238	0.9264
3121	Beverage Manufacturing		0.4230	0.0000
4239	Miscellaneous Durable Goods Merchant Wholesalers	X	0.4225	0.0000
3131	Fiber, Yarn, and Thread Mills		0.4209	0.2988
3272	Glass and Glass Product Manufacturing		0.4203	0.0818
5182	Data Processing, Hosting, and Related Services	X	0.4164	0.6988
5311	Lessors of Real Estate	X	0.4146	0.1571
4882	Support Activities for Rail Transportation	X	0.4136	0.0000
8113	Commercial and Industrial Machinery and Equipment (except Automotive and Electronic) Repair		0.4125	0.0000
5616	Investigation and Security Services		0.4121	0.0000
2383	Building Finishing Contractors	X	0.4120	0.0000
3359	Other Electrical Equipment and Component Manufacturing	X	0.4120	0.1062
3271	Clay Product and Refractory Manufacturing	X	0.4109	0.0000

Table 6: Industries with High Desirability Index Scores (DI > .40)

NAICS4	Description	Existing	DI	CI
1131	Timber Tract Operations	X	0.4108	0.4546
3133	Textile and Fabric Finishing and Fabric Coating Mills		0.4105	0.0000
5615	Travel Arrangement and Reservation Services	X	0.4096	0.4606
7131	Amusement Parks and Arcades		0.4093	0.0000
5259	Other Investment Pools and Funds	X	0.4076	0.6284
5322	Consumer Goods Rental	X	0.4067	0.1533
2372	Land Subdivision	X	0.4059	0.4271
3372	Office Furniture (including Fixtures) Manufacturing		0.4056	0.0236
2371	Utility System Construction	X	0.4031	0.0000
5151	Radio and Television Broadcasting	X	0.4025	0.9372
5511	Management of Companies and Enterprises	X	0.4025	0.0000
5629	Remediation and Other Waste Management Services	X	0.4025	0.1538
5415	Computer Systems Design and Related Services	X	0.4007	0.3335
6112	Junior Colleges		0.4003	0.8765

Table 7: Industries with High Compatibility Index Scores (CI > .40)

NAICS4	Description	Existing	DI	CI
4853	Taxi and Limousine Service	X	0.2659	0.9933
8134	Civic and Social Organizations		0.3815	0.9858
4861	Pipeline Transportation of Crude Oil		0.5905	0.9857
8131	Religious Organizations		0.4553	0.9769
6114	Business Schools and Computer and Management Training	X	0.3173	0.9490
5241	Insurance Carriers		0.4943	0.9485
4922	Local Messengers and Local Delivery	X	0.3235	0.9484
5412	Accounting, Tax Preparation, Bookkeeping, and Payroll Services		0.4359	0.9432
6116	Other Schools and Instruction	X	0.3221	0.9388
5151	Radio and Television Broadcasting	X	0.4025	0.9372
6231	Nursing Care Facilities (Skilled Nursing Facilities)		0.4276	0.9366
5232	Securities and Commodity Exchanges		0.4333	0.9314
4872	Scenic and Sightseeing Transportation, Water	X	0.3950	0.9304
6241	Individual and Family Services	X	0.3147	0.9300
4852	Interurban and Rural Bus Transportation	X	0.3171	0.9283
6113	Colleges, Universities, and Professional Schools		0.4238	0.9264
5331	Lessors of Nonfinancial Intangible Assets (except Copyrighted Works)		0.4945	0.9178
8121	Personal Care Services	X	0.2961	0.9141
6243	Vocational Rehabilitation Services	X	0.3733	0.8990
5242	Agencies, Brokerages, and Other Insurance Related Activities	X	0.3785	0.8956
5323	General Rental Centers	X	0.3675	0.8888
5239	Other Financial Investment Activities	X	0.4746	0.8883
5221	Depository Credit Intermediation	X	0.3977	0.8790
6112	Junior Colleges		0.4003	0.8765
5313	Activities Related to Real Estate	X	0.3609	0.7857
5112	Software Publishers	X	0.3814	0.7842
6244	Child Day Care Services	X	0.3893	0.7810
8132	Grantmaking and Giving Services	X	0.3606	0.7665
5222	Nondepository Credit Intermediation	X	0.3835	0.7664
5223	Activities Related to Credit Intermediation	X	0.3961	0.7467
5411	Legal Services		0.4460	0.7403
5182	Data Processing, Hosting, and Related Services	X	0.4164	0.6988
9261	Administration of Economic Programs		0.4624	0.6891
5259	Other Investment Pools and Funds	X	0.4076	0.6284
6216	Home Health Care Services	X	0.3056	0.6221
6115	Technical and Trade Schools	X	0.3097	0.6145
4883	Support Activities for Water Transportation	X	0.3614	0.6101
4879	Scenic and Sightseeing Transportation, Other	X	0.3835	0.6060
8139	Business, Professional, Labor, Political, and Similar Organizations		0.4434	0.6060
6232	Residential Intellectual and Developmental Disability, Mental Health, and Substance Abuse Fac	X	0.3604	0.6049
6233	Continuing Care Retirement Communities and Assisted Living Facilities for the Elderly		0.4318	0.5919
6117	Educational Support Services	X	0.3280	0.5772
8112	Electronic and Precision Equipment Repair and Maintenance	X	0.3002	0.5694
6215	Medical and Diagnostic Laboratories		0.4908	0.5527
6239	Other Residential Care Facilities	X	0.3197	0.5509
5251	Insurance and Employee Benefit Funds	X	0.3856	0.5278
3122	Tobacco Manufacturing		0.4565	0.5267
6214	Outpatient Care Centers	X	0.3960	0.5120
1122	Hog and Pig Farming	X	0.3747	0.5023

Table 7: Industries with High Compatibility Index Scores (CI > .40)

NAICS4	Description	Existing	DI	CI
4251	Wholesale Electronic Markets and Agents and Brokers		0.4422	0.5006
5312	Offices of Real Estate Agents and Brokers	X	0.3602	0.4892
6242	Community Food and Housing, and Emergency and Other Relief Services	X	0.2882	0.4809
7121	Museums, Historical Sites, and Similar Institutions	X	0.3459	0.4803
1113	Fruit and Tree Nut Farming	X	0.3836	0.4723
5231	Securities and Commodity Contracts Intermediation and Brokerage		0.5220	0.4707
4832	Inland Water Transportation	X	0.4887	0.4687
4481	Clothing Stores	X	0.3764	0.4674
1111	Oilseed and Grain Farming	X	0.3426	0.4669
4512	Book Stores and News Dealers	X	0.3210	0.4635
5615	Travel Arrangement and Reservation Services	X	0.4096	0.4606
5173	Wired and Wireless Telecommunications Carriers		0.5143	0.4584
1131	Timber Tract Operations	X	0.4108	0.4546
6212	Offices of Dentists		0.4294	0.4537
8114	Personal and Household Goods Repair and Maintenance	X	0.3269	0.4494
1142	Hunting and Trapping	X	0.3213	0.4478
2372	Land Subdivision	X	0.4059	0.4271
2131	Support Activities for Mining	X	0.3671	0.4079
5419	Other Professional, Scientific, and Technical Services	X	0.3581	0.4020

Table 8: Compatibility Index and Desirability Index Scores - All Industries

NAICS4	Description	Existing	DI	CI
1111	Oilseed and Grain Farming	X	0.3426	0.4669
1112	Vegetable and Melon Farming	X	0.3942	0.2635
1113	Fruit and Tree Nut Farming	X	0.3836	0.4723
1114	Greenhouse, Nursery, and Floriculture Production	X	0.3679	0.0997
1119	Other Crop Farming	X	0.2935	0.2049
1121	Cattle Ranching and Farming	X	0.3408	0.1015
1122	Hog and Pig Farming	X	0.3747	0.5023
1124	Sheep and Goat Farming	X	0.3331	0.0513
1125	Aquaculture	X	0.3413	0.2713
1129	Other Animal Production	X	0.3248	0.1659
1131	Timber Tract Operations	X	0.4108	0.4546
1132	Forest Nurseries and Gathering of Forest Products	X	0.3770	0.1850
1133	Logging	X	0.5050	0.2886
1141	Fishing		0.4492	0.2349
1142	Hunting and Trapping	X	0.3213	0.4478
1151	Support Activities for Crop Production	X	0.2931	0.1398
1152	Support Activities for Animal Production	X	0.2927	0.1293
1153	Support Activities for Forestry	X	0.2918	0.3156
2111	Oil and Gas Extraction	X	0.4299	0.2859
2121	Coal Mining		0.5137	0.0345
2122	Metal Ore Mining		0.4654	0.0000
2123	Nonmetallic Mineral Mining and Quarrying	X	0.4860	0.0935
2131	Support Activities for Mining	X	0.3671	0.4079
2211	Electric Power Generation, Transmission and Distribution	X	0.4753	0.2551
2212	Natural Gas Distribution		0.7087	0.0000
2213	Water, Sewage and Other Systems	X	0.3885	0.0384
2361	Residential Building Construction	X	0.3857	0.0000
2362	Nonresidential Building Construction	X	0.3651	0.1768
2371	Utility System Construction	X	0.4031	0.0000
2372	Land Subdivision	X	0.4059	0.4271
2373	Highway, Street, and Bridge Construction	X	0.3720	0.0000
2379	Other Heavy and Civil Engineering Construction	X	0.3798	0.0000
2381	Foundation, Structure, and Building Exterior Contractors	X	0.3912	0.0000
2382	Building Equipment Contractors	X	0.3779	0.2367
2383	Building Finishing Contractors	X	0.4120	0.0000
2389	Other Specialty Trade Contractors	X	0.3645	0.3041
3111	Animal Food Manufacturing		0.5074	0.0279
3112	Grain and Oilseed Milling		0.5198	0.1120
3113	Sugar and Confectionery Product Manufacturing		0.5318	0.0000
3114	Fruit and Vegetable Preserving and Specialty Food Manufacturing		0.4944	0.0000
3115	Dairy Product Manufacturing		0.5589	0.0000
3116	Animal Slaughtering and Processing		0.5325	0.1297
3117	Seafood Product Preparation and Packaging		0.4849	0.0996
3118	Bakeries and Tortilla Manufacturing	X	0.4669	0.0000
3119	Other Food Manufacturing	X	0.5307	0.1018
3121	Beverage Manufacturing		0.4230	0.0000
3122	Tobacco Manufacturing		0.4565	0.5267
3131	Fiber, Yarn, and Thread Mills		0.4209	0.2988
3132	Fabric Mills	X	0.3453	0.2291

Table 8: Compatibility Index and Desirability Index Scores - All Industries

NAICS4	Description	Existing	DI	CI
3133	Textile and Fabric Finishing and Fabric Coating Mills		0.4105	0.0000
3141	Textile Furnishings Mills		0.3646	0.0000
3149	Other Textile Product Mills		0.3908	0.0000
3151	Apparel Knitting Mills		0.3775	0.0000
3152	Cut and Sew Apparel Manufacturing		0.3865	0.2229
3159	Apparel Accessories and Other Apparel Manufacturing		0.4366	0.0000
3161	Leather and Hide Tanning and Finishing		0.3770	0.1922
3162	Footwear Manufacturing		0.3691	0.2758
3169	Other Leather and Allied Product Manufacturing		0.3937	0.0198
3211	Sawmills and Wood Preservation	X	0.4992	0.1048
3212	Veneer, Plywood, and Engineered Wood Product Manufacturing		0.4926	0.0675
3219	Other Wood Product Manufacturing		0.4556	0.0246
3221	Pulp, Paper, and Paperboard Mills		0.5236	0.1928
3222	Converted Paper Product Manufacturing		0.5014	0.0000
3231	Printing and Related Support Activities	X	0.3359	0.0000
3241	Petroleum and Coal Products Manufacturing	X	0.6290	0.1737
3251	Basic Chemical Manufacturing		0.5715	0.1508
3252	Resin, Synthetic Rubber, and Artificial and Synthetic Fibers and Filaments Manufacturing		0.5926	0.1448
3253	Pesticide, Fertilizer, and Other Agricultural Chemical Manufacturing		0.5625	0.0667
3254	Pharmaceutical and Medicine Manufacturing		0.6629	0.0000
3255	Paint, Coating, and Adhesive Manufacturing		0.5717	0.0285
3256	Soap, Cleaning Compound, and Toilet Preparation Manufacturing		0.6350	0.0865
3259	Other Chemical Product and Preparation Manufacturing		0.5554	0.0000
3261	Plastics Product Manufacturing	X	0.3863	0.0333
3262	Rubber Product Manufacturing		0.4438	0.3819
3271	Clay Product and Refractory Manufacturing	X	0.4109	0.0000
3272	Glass and Glass Product Manufacturing		0.4203	0.0818
3273	Cement and Concrete Product Manufacturing		0.5400	0.1826
3274	Lime and Gypsum Product Manufacturing		0.4733	0.0000
3279	Other Nonmetallic Mineral Product Manufacturing		0.4703	0.1999
3311	Iron and Steel Mills and Ferroalloy Manufacturing		0.4748	0.0000
3312	Steel Product Manufacturing from Purchased Steel		0.5479	0.2131
3313	Alumina and Aluminum Production and Processing		0.5662	0.0297
3314	Nonferrous Metal (except Aluminum) Production and Processing		0.5266	0.0194
3315	Foundries		0.5724	0.1494
3321	Forging and Stamping		0.4447	0.0000
3322	Cutlery and Handtool Manufacturing		0.4733	0.0320
3323	Architectural and Structural Metals Manufacturing		0.4437	0.0000
3324	Boiler, Tank, and Shipping Container Manufacturing		0.4279	0.0931
3325	Hardware Manufacturing		0.4864	0.0442
3326	Spring and Wire Product Manufacturing		0.4492	0.0570
3327	Machine Shops; Turned Product; and Screw, Nut, and Bolt Manufacturing		0.4447	0.0000
3328	Coating, Engraving, Heat Treating, and Allied Activities		0.4819	0.1382
3329	Other Fabricated Metal Product Manufacturing		0.4307	0.1834
3331	Agriculture, Construction, and Mining Machinery Manufacturing		0.5411	0.1435
3332	Industrial Machinery Manufacturing		0.5041	0.0000
3333	Commercial and Service Industry Machinery Manufacturing		0.4927	0.0000
3334	Ventilation, Heating, Air-Conditioning, and Commercial Refrigeration Equipment Manufacturin		0.4426	0.0000
3335	Metalworking Machinery Manufacturing		0.4554	0.0952

Table 8: Compatibility Index and Desirability Index Scores - All Industries

NAICS4	Description	Existing	DI	CI
3336	Engine, Turbine, and Power Transmission Equipment Manufacturing		0.5025	0.0342
3339	Other General Purpose Machinery Manufacturing		0.5376	0.0621
3341	Computer and Peripheral Equipment Manufacturing		0.5480	0.2055
3342	Communications Equipment Manufacturing		0.5611	0.3541
3343	Audio and Video Equipment Manufacturing		0.5145	0.0243
3344	Semiconductor and Other Electronic Component Manufacturing		0.7482	0.0619
3345	Navigational, Measuring, Electromedical, and Control Instruments Manufacturing		0.5984	0.0698
3346	Manufacturing and Reproducing Magnetic and Optical Media		0.5122	0.1492
3351	Electric Lighting Equipment Manufacturing		0.4334	0.1125
3352	Household Appliance Manufacturing		0.4434	0.0000
3353	Electrical Equipment Manufacturing		0.5543	0.2771
3359	Other Electrical Equipment and Component Manufacturing	X	0.4120	0.1062
3361	Motor Vehicle Manufacturing		0.5242	0.0000
3362	Motor Vehicle Body and Trailer Manufacturing		0.4815	0.0366
3363	Motor Vehicle Parts Manufacturing		0.5054	0.0000
3364	Aerospace Product and Parts Manufacturing	X	0.4854	0.0980
3365	Railroad Rolling Stock Manufacturing		0.4722	0.2296
3366	Ship and Boat Building		0.4340	0.1206
3369	Other Transportation Equipment Manufacturing		0.4257	0.0000
3371	Household and Institutional Furniture and Kitchen Cabinet Manufacturing	X	0.3697	0.1409
3372	Office Furniture (including Fixtures) Manufacturing		0.4056	0.0236
3379	Other Furniture Related Product Manufacturing		0.4256	0.1219
3391	Medical Equipment and Supplies Manufacturing		0.4813	0.1935
3399	Other Miscellaneous Manufacturing	X	0.4640	0.0856
4231	Motor Vehicle and Motor Vehicle Parts and Supplies Merchant Wholesalers		0.5104	0.1035
4233	Lumber and Other Construction Materials Merchant Wholesalers	X	0.4516	0.0935
4234	Professional and Commercial Equipment and Supplies Merchant Wholesalers	X	0.4473	0.1187
4235	Metal and Mineral (except Petroleum) Merchant Wholesalers	X	0.4451	0.1249
4236	Household Appliances and Electrical and Electronic Goods Merchant Wholesalers		0.5278	0.0565
4237	Hardware, and Plumbing and Heating Equipment and Supplies Merchant Wholesalers	X	0.4494	0.0774
4238	Machinery, Equipment, and Supplies Merchant Wholesalers	X	0.4429	0.0320
4239	Miscellaneous Durable Goods Merchant Wholesalers	X	0.4225	0.0000
4241	Paper and Paper Product Merchant Wholesalers		0.5342	0.1642
4242	Drugs and Druggists' Sundries Merchant Wholesalers		0.5452	0.0979
4243	Apparel, Piece Goods, and Notions Merchant Wholesalers		0.5291	0.1293
4244	Grocery and Related Product Merchant Wholesalers		0.6133	0.2348
4245	Farm Product Raw Material Merchant Wholesalers		0.4929	0.0000
4246	Chemical and Allied Products Merchant Wholesalers		0.5130	0.0509
4247	Petroleum and Petroleum Products Merchant Wholesalers		0.4867	0.3758
4248	Beer, Wine, and Distilled Alcoholic Beverage Merchant Wholesalers		0.5601	0.1178
4249	Miscellaneous Nondurable Goods Merchant Wholesalers		0.5367	0.0966
4251	Wholesale Electronic Markets and Agents and Brokers		0.4422	0.5006
4411	Automobile Dealers	X	0.3797	0.0000
4412	Other Motor Vehicle Dealers	X	0.3641	0.1954
4421	Furniture Stores	X	0.3256	0.0000
4422	Home Furnishings Stores	X	0.3319	0.2269
4431	Electronics and Appliance Stores	X	0.3770	0.3969
4441	Building Material and Supplies Dealers	X	0.3585	0.0000
4442	Lawn and Garden Equipment and Supplies Stores	X	0.3605	0.0690

Table 8: Compatibility Index and Desirability Index Scores - All Industries

NAICS4	Description	Existing	DI	CI
4451	Grocery Stores	X	0.3521	0.2226
4452	Specialty Food Stores	X	0.3569	0.0000
4461	Health and Personal Care Stores	X	0.3292	0.2848
4481	Clothing Stores	X	0.3764	0.4674
4482	Shoe Stores	X	0.3233	0.0000
4483	Jewelry, Luggage, and Leather Goods Stores	X	0.3339	0.0000
4511	Sporting Goods, Hobby, and Musical Instrument Stores	X	0.3406	0.0000
4512	Book Stores and News Dealers	X	0.3210	0.4635
4523	General Merchandise Stores, including Warehouse Clubs and Supercenters	X	0.3407	0.0000
4531	Florists	X	0.3144	0.0000
4533	Used Merchandise Stores	X	0.2922	0.0000
4539	Other Miscellaneous Store Retailers	X	0.3227	0.0000
4541	Electronic Shopping and Mail-Order Houses	X	0.3752	0.2330
4542	Vending Machine Operators	X	0.3281	0.0000
4543	Direct Selling Establishments	X	0.3509	0.0700
4811	Scheduled Air Transportation	X	0.4687	0.0520
4812	Nonscheduled Air Transportation	X	0.4624	0.1949
4821	Rail Transportation		0.5745	0.2280
4832	Inland Water Transportation	X	0.4887	0.4687
4841	General Freight Trucking	X	0.4399	0.2209
4851	Urban Transit Systems	X	0.3326	0.1874
4852	Interurban and Rural Bus Transportation	X	0.3171	0.9283
4853	Taxi and Limousine Service	X	0.2659	0.9933
4855	Charter Bus Industry	X	0.3343	0.0000
4859	Other Transit and Ground Passenger Transportation	X	0.3532	0.3746
4861	Pipeline Transportation of Crude Oil		0.5905	0.9857
4862	Pipeline Transportation of Natural Gas		0.6292	0.0000
4869	Other Pipeline Transportation		0.6242	0.0000
4871	Scenic and Sightseeing Transportation, Land	X	0.3765	0.1016
4872	Scenic and Sightseeing Transportation, Water	X	0.3950	0.9304
4879	Scenic and Sightseeing Transportation, Other	X	0.3835	0.6060
4881	Support Activities for Air Transportation	X	0.4355	0.1199
4882	Support Activities for Rail Transportation	X	0.4136	0.0000
4883	Support Activities for Water Transportation	X	0.3614	0.6101
4885	Freight Transportation Arrangement	X	0.4325	0.0000
4889	Other Support Activities for Transportation	X	0.4453	0.0000
4921	Couriers and Express Delivery Services	X	0.3522	0.2264
4922	Local Messengers and Local Delivery	X	0.3235	0.9484
4931	Warehousing and Storage	X	0.4548	0.1027
5111	Newspaper, Periodical, Book, and Directory Publishers		0.5285	0.2864
5112	Software Publishers	X	0.3814	0.7842
5121	Motion Picture and Video Industries	X	0.4892	0.3160
5122	Sound Recording Industries		0.4617	0.2603
5151	Radio and Television Broadcasting	X	0.4025	0.9372
5152	Cable and Other Subscription Programming		0.5862	0.2489
5173	Wired and Wireless Telecommunications Carriers		0.5143	0.4584
5179	Other Telecommunications	X	0.5368	0.3161
5182	Data Processing, Hosting, and Related Services	X	0.4164	0.6988
5191	Other Information Services	X	0.3621	0.1664

Table 8: Compatibility Index and Desirability Index Scores - All Industries

NAICS4	Description	Existing	DI	CI
5221	Depository Credit Intermediation	X	0.3977	0.8790
5222	Nondepository Credit Intermediation	X	0.3835	0.7664
5223	Activities Related to Credit Intermediation	X	0.3961	0.7467
5231	Securities and Commodity Contracts Intermediation and Brokerage		0.5220	0.4707
5232	Securities and Commodity Exchanges		0.4333	0.9314
5239	Other Financial Investment Activities	X	0.4746	0.8883
5241	Insurance Carriers		0.4943	0.9485
5242	Agencies, Brokerages, and Other Insurance Related Activities	X	0.3785	0.8956
5251	Insurance and Employee Benefit Funds	X	0.3856	0.5278
5259	Other Investment Pools and Funds	X	0.4076	0.6284
5311	Lessors of Real Estate	X	0.4146	0.1571
5312	Offices of Real Estate Agents and Brokers	X	0.3602	0.4892
5313	Activities Related to Real Estate	X	0.3609	0.7857
5321	Automotive Equipment Rental and Leasing		0.4615	0.0000
5322	Consumer Goods Rental	X	0.4067	0.1533
5323	General Rental Centers	X	0.3675	0.8888
5331	Lessors of Nonfinancial Intangible Assets (except Copyrighted Works)		0.4945	0.9178
5411	Legal Services		0.4460	0.7403
5412	Accounting, Tax Preparation, Bookkeeping, and Payroll Services		0.4359	0.9432
5413	Architectural, Engineering, and Related Services		0.5316	0.1880
5414	Specialized Design Services		0.4661	0.2876
5415	Computer Systems Design and Related Services	X	0.4007	0.3335
5416	Management, Scientific, and Technical Consulting Services		0.4878	0.2841
5417	Scientific Research and Development Services	X	0.4941	0.1886
5418	Advertising, Public Relations, and Related Services		0.5091	0.2617
5419	Other Professional, Scientific, and Technical Services	X	0.3581	0.4020
5511	Management of Companies and Enterprises	X	0.4025	0.0000
5611	Office Administrative Services		0.4255	0.3133
5613	Employment Services		0.3896	0.3391
5614	Business Support Services	X	0.3585	0.0254
5615	Travel Arrangement and Reservation Services	X	0.4096	0.4606
5616	Investigation and Security Services		0.4121	0.0000
5617	Services to Buildings and Dwellings		0.3773	0.0000
5619	Other Support Services	X	0.3650	0.2723
5621	Waste Collection	X	0.3346	0.0000
5622	Waste Treatment and Disposal	X	0.3871	0.0577
5629	Remediation and Other Waste Management Services	X	0.4025	0.1538
6111	Elementary and Secondary Schools		0.4499	0.2664
6112	Junior Colleges		0.4003	0.8765
6113	Colleges, Universities, and Professional Schools		0.4238	0.9264
6114	Business Schools and Computer and Management Training	X	0.3173	0.9490
6115	Technical and Trade Schools	X	0.3097	0.6145
6116	Other Schools and Instruction	X	0.3221	0.9388
6117	Educational Support Services	X	0.3280	0.5772
6212	Offices of Dentists		0.4294	0.4537
6214	Outpatient Care Centers	X	0.3960	0.5120
6215	Medical and Diagnostic Laboratories		0.4908	0.5527
6216	Home Health Care Services	X	0.3056	0.6221
6231	Nursing Care Facilities (Skilled Nursing Facilities)		0.4276	0.9366

Table 8: Compatibility Index and Desirability Index Scores - All Industries

NAICS4	Description	Existing	DI	CI
6232	Residential Intellectual and Developmental Disability, Mental Health, and Substance Abuse Fac	X	0.3604	0.6049
6233	Continuing Care Retirement Communities and Assisted Living Facilities for the Elderly		0.4318	0.5919
6239	Other Residential Care Facilities	X	0.3197	0.5509
6241	Individual and Family Services	X	0.3147	0.9300
6242	Community Food and Housing, and Emergency and Other Relief Services	X	0.2882	0.4809
6243	Vocational Rehabilitation Services	X	0.3733	0.8990
6244	Child Day Care Services	X	0.3893	0.7810
7112	Spectator Sports		0.3950	0.0000
7113	Promoters of Performing Arts, Sports, and Similar Events		0.3882	0.0000
7114	Agents and Managers for Artists, Athletes, Entertainers, and Other Public Figures		0.3921	0.0000
7121	Museums, Historical Sites, and Similar Institutions	X	0.3459	0.4803
7131	Amusement Parks and Arcades		0.4093	0.0000
7139	Other Amusement and Recreation Industries	X	0.3597	0.3076
7212	RV (Recreational Vehicle) Parks and Recreational Camps	X	0.3382	0.0960
7213	Rooming and Boarding Houses, Dormitories, and Workers' Camps	X	0.3224	0.3804
7223	Special Food Services	X	0.3604	0.0259
7225	Restaurants and Other Eating Places	X	0.3593	0.2944
8112	Electronic and Precision Equipment Repair and Maintenance	X	0.3002	0.5694
8113	Commercial and Industrial Machinery and Equipment (except Automotive and Electronic) Repa		0.4125	0.0000
8114	Personal and Household Goods Repair and Maintenance	X	0.3269	0.4494
8121	Personal Care Services	X	0.2961	0.9141
8122	Death Care Services		0.3529	0.3719
8123	Drycleaning and Laundry Services		0.3598	0.0000
8129	Other Personal Services	X	0.3285	0.2313
8131	Religious Organizations		0.4553	0.9769
8132	Grantmaking and Giving Services	X	0.3606	0.7665
8133	Social Advocacy Organizations	X	0.4461	0.1787
8134	Civic and Social Organizations		0.3815	0.9858
8139	Business, Professional, Labor, Political, and Similar Organizations		0.4434	0.6060
9261	Administration of Economic Programs		0.4624	0.6891