

Table 1: Santa Fe County, NM Community Development Goal Rankings

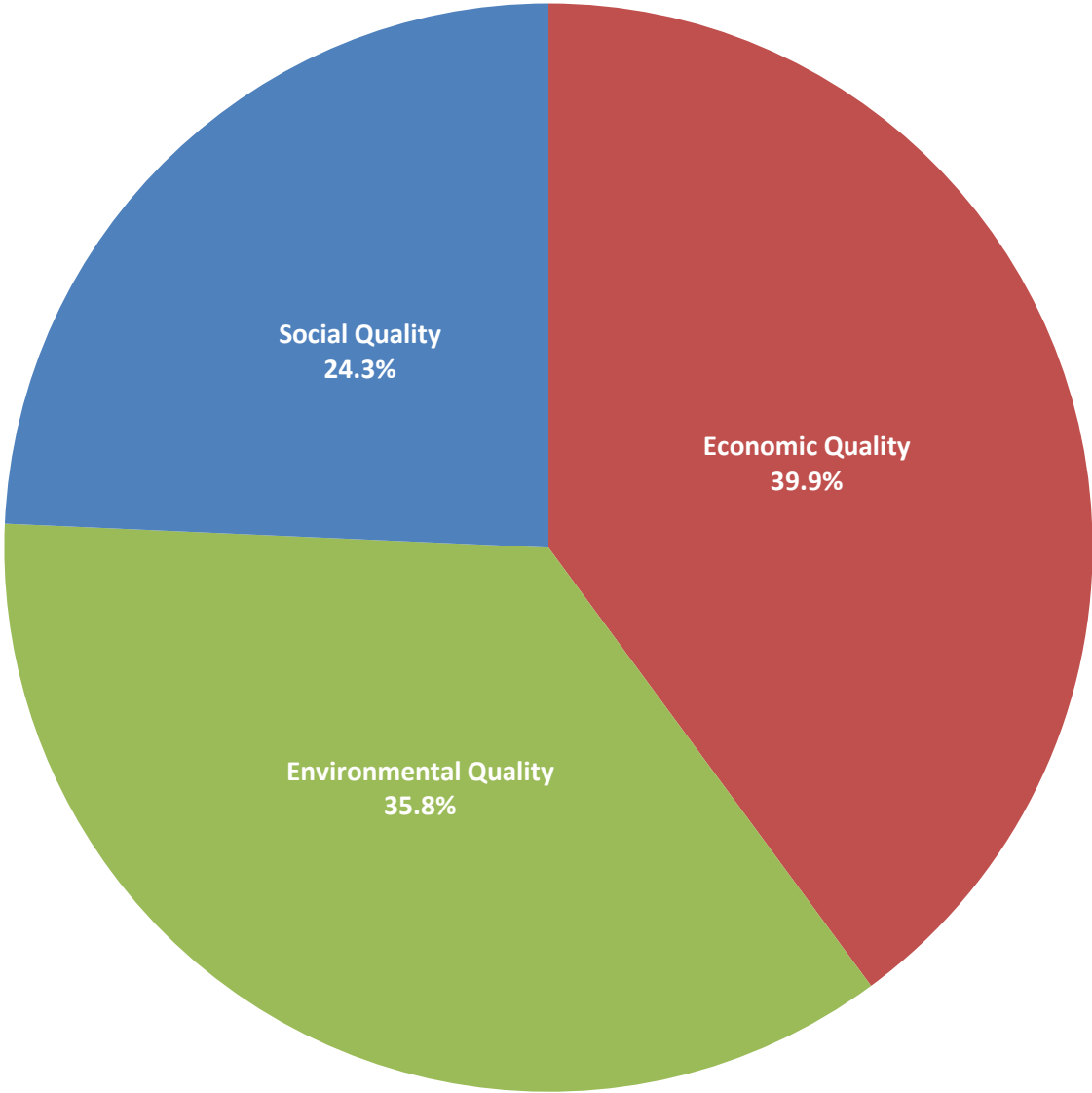
| <i>Goal</i> | <i>Weight</i> | <i>Rank</i> |
|-----------------------|---------------|-------------|
| Economic Quality | 39.90% | 1 |
| Environmental Quality | 35.80% | 2 |
| Social Quality | 24.30% | 3 |

Table 2: Community Development Indicator Rankings

| <i>Indicator</i> | <i>Weight</i> | <i>Rank</i> |
|--------------------------------------------------------------------------|---------------|-------------|
| G1.I1 - Every new job generates additional jobs in the community | 8.46% | 4 |
| G1.I2 - New businesses return profits to the community | 7.02% | 8 |
| G1.I3 - New businesses hire locally | 10.05% | 1 |
| G1.I4 - New businesses buy locally | 7.46% | 7 |
| G1.I5 - New businesses increase the average local wage | 6.86% | 9 |
| G2.I1 - New businesses do not pollute the water | 9.95% | 2 |
| G2.I2 - New businesses do not release toxic chemicals in the air | 9.31% | 3 |
| G2.I3 - New businesses are in compliance with hazardous waste management | 7.84% | 6 |
| G2.I4 - New businesses do not emit greenhouse gas | 5.62% | 10 |
| G2.I5 - New businesses do not develop undeveloped land | 3.08% | 15 |
| G3.I1 - New businesses increase the local tax base | 4.88% | 11 |
| G3.I2 - New jobs are full-time | 4.42% | 12 |
| G3.I3 - New jobs offer benefits (health and/or retirement) | 7.85% | 5 |
| G3.I4 - New jobs provide training programs | 3.72% | 13 |
| G3.I5 - New businesses support community activities | 3.45% | 14 |

| | |
|------------------------|----|
| Number of observations | 25 |
|------------------------|----|

**Figure 1: Community Development Goal Weights:
Santa Fe County, NM**



**Figure 2: Community Development Indicator Weights:
Santa Fe County, NM**

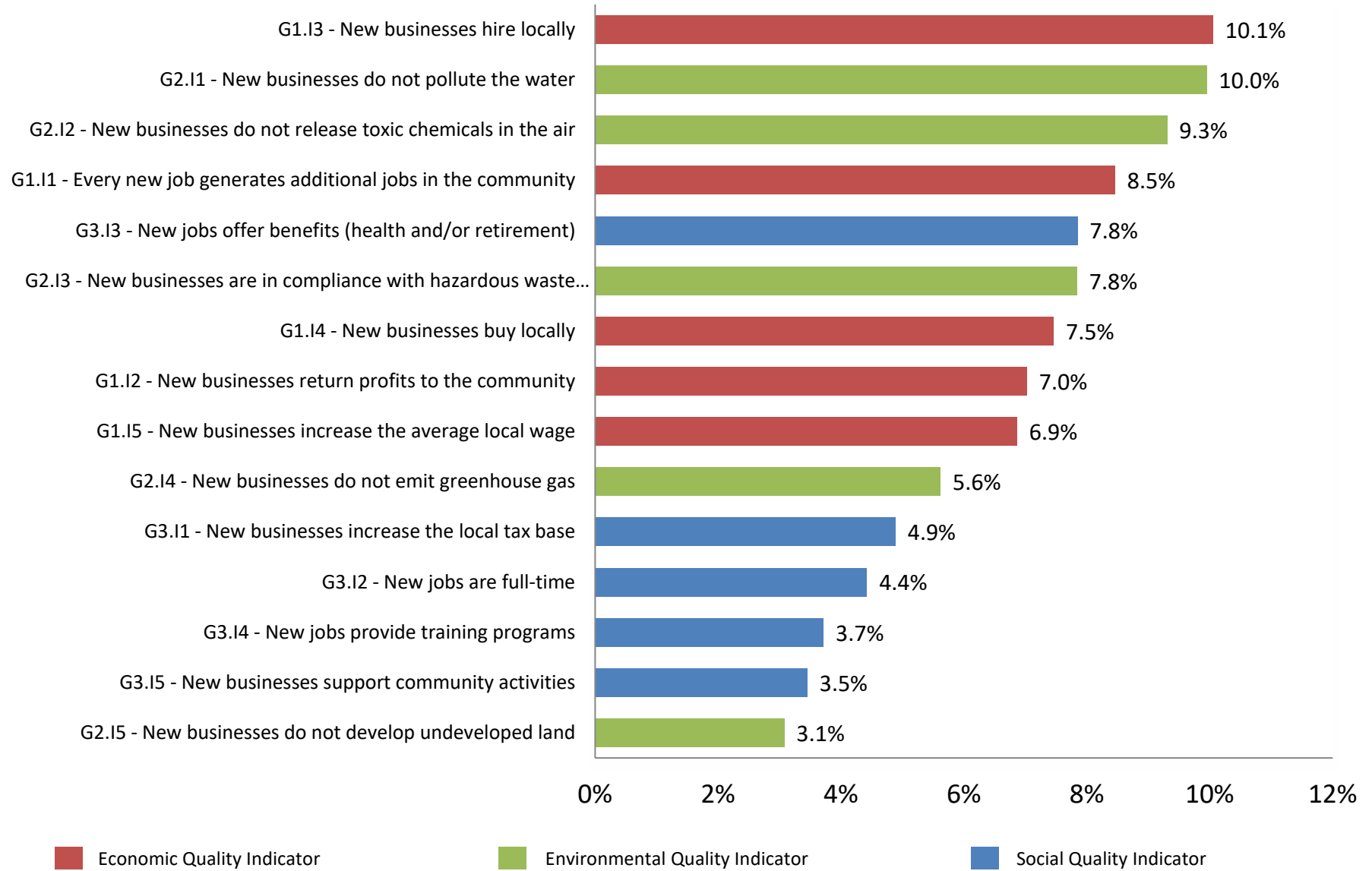


Figure 3: Santa Fe County, NM ASAP Results
All NAICS

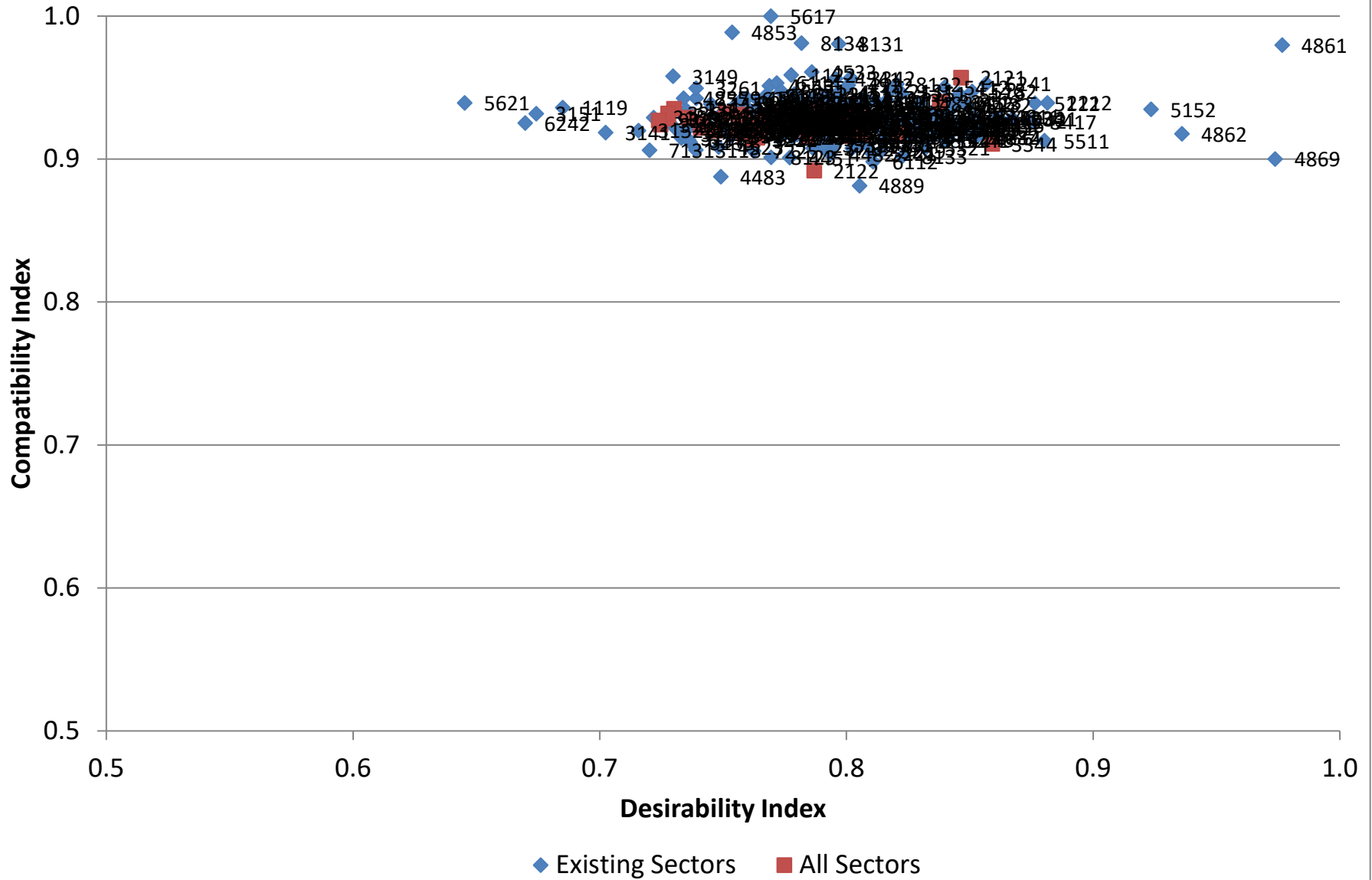


Figure 5: Santa Fe County, NM ASAP Results
Target NAICS

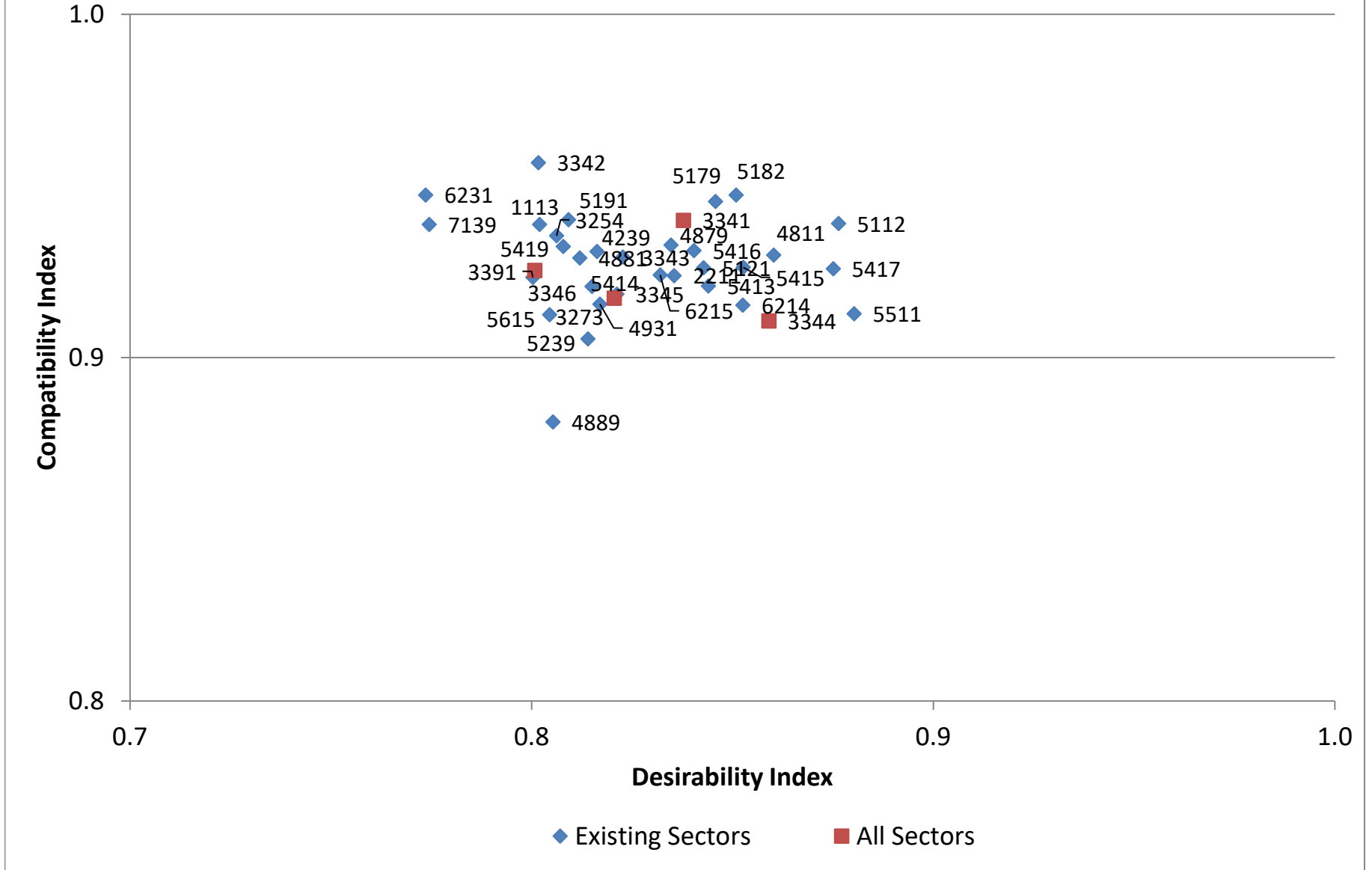


Table 3: Industries with High Desirability and Compatibility Index Scores (Index > .80)

| NAICS4 | Description | Existing | DI | CI |
|--------|-----------------------------------------------------------------------------------|----------|--------|--------|
| 4861 | Pipeline Transportation of Crude Oil | X | 0.9766 | 0.9798 |
| 4869 | Other Pipeline Transportation | X | 0.9738 | 0.9001 |
| 4862 | Pipeline Transportation of Natural Gas | X | 0.9360 | 0.9177 |
| 5152 | Cable and Other Subscription Programming | X | 0.9235 | 0.9348 |
| 2212 | Natural Gas Distribution | X | 0.8814 | 0.9392 |
| 5511 | Management of Companies and Enterprises | X | 0.8803 | 0.9128 |
| 5112 | Software Publishers | X | 0.8764 | 0.9391 |
| 5417 | Scientific Research and Development Services | X | 0.8751 | 0.9259 |
| 5331 | Lessors of Nonfinancial Intangible Assets (except Copyrighted Works) | X | 0.8673 | 0.9283 |
| 4242 | Drugs and Druggists' Sundries Merchant Wholesalers | X | 0.8630 | 0.9264 |
| 4234 | Professional and Commercial Equipment and Supplies Merchant Wholesalers | X | 0.8621 | 0.9285 |
| 4811 | Scheduled Air Transportation | X | 0.8603 | 0.9299 |
| 3344 | Semiconductor and Other Electronic Component Manufacturing | | 0.8591 | 0.9107 |
| 5241 | Insurance Carriers | X | 0.8567 | 0.9528 |
| 4236 | Household Appliances and Electrical and Electronic Goods Merchant Wholesalers | X | 0.8538 | 0.9238 |
| 5415 | Computer Systems Design and Related Services | X | 0.8527 | 0.9263 |
| 6214 | Outpatient Care Centers | X | 0.8526 | 0.9153 |
| 4882 | Support Activities for Rail Transportation | X | 0.8521 | 0.9154 |
| 5231 | Securities and Commodity Contracts Intermediation and Brokerage | X | 0.8517 | 0.9294 |
| 5182 | Data Processing, Hosting, and Related Services | X | 0.8509 | 0.9474 |
| 3241 | Petroleum and Coal Products Manufacturing | X | 0.8499 | 0.9217 |
| 5232 | Securities and Commodity Exchanges | X | 0.8487 | 0.9379 |
| 4812 | Nonscheduled Air Transportation | X | 0.8478 | 0.9184 |
| 2121 | Coal Mining | | 0.8465 | 0.9570 |
| 5179 | Other Telecommunications | X | 0.8458 | 0.9455 |
| 1131 | Timber Tract Operations | X | 0.8455 | 0.9245 |
| 6113 | Colleges, Universities, and Professional Schools | X | 0.8448 | 0.9400 |
| 5413 | Architectural, Engineering, and Related Services | X | 0.8440 | 0.9209 |
| 4883 | Support Activities for Water Transportation | X | 0.8439 | 0.9241 |
| 5121 | Motion Picture and Video Industries | X | 0.8428 | 0.9262 |
| 5223 | Activities Related to Credit Intermediation | X | 0.8426 | 0.9351 |
| 4248 | Beer, Wine, and Distilled Alcoholic Beverage Merchant Wholesalers | X | 0.8416 | 0.9137 |
| 4872 | Scenic and Sightseeing Transportation, Water | X | 0.8414 | 0.9385 |
| 4237 | Hardware, and Plumbing and Heating Equipment and Supplies Merchant Wholesalers | X | 0.8404 | 0.9232 |
| 5416 | Management, Scientific, and Technical Consulting Services | X | 0.8404 | 0.9312 |
| 5242 | Agencies, Brokerages, and Other Insurance Related Activities | X | 0.8400 | 0.9130 |
| 5412 | Accounting, Tax Preparation, Bookkeeping, and Payroll Services | X | 0.8398 | 0.9503 |
| 5418 | Advertising, Public Relations, and Related Services | X | 0.8386 | 0.9299 |
| 3341 | Computer and Peripheral Equipment Manufacturing | | 0.8378 | 0.9400 |
| 4241 | Paper and Paper Product Merchant Wholesalers | X | 0.8377 | 0.9254 |
| 5222 | Nondepository Credit Intermediation | X | 0.8369 | 0.9212 |
| 4238 | Machinery, Equipment, and Supplies Merchant Wholesalers | X | 0.8366 | 0.9213 |
| 4246 | Chemical and Allied Products Merchant Wholesalers | X | 0.8358 | 0.9193 |
| 2211 | Electric Power Generation, Transmission and Distribution | X | 0.8355 | 0.9239 |
| 4235 | Metal and Mineral (except Petroleum) Merchant Wholesalers | X | 0.8348 | 0.9219 |
| 4879 | Scenic and Sightseeing Transportation, Other | X | 0.8347 | 0.9328 |
| 7114 | Agents and Managers for Artists, Athletes, Entertainers, and Other Public Figures | X | 0.8321 | 0.9133 |
| 5321 | Automotive Equipment Rental and Leasing | X | 0.8320 | 0.9076 |
| 6215 | Medical and Diagnostic Laboratories | X | 0.8320 | 0.9241 |
| 4233 | Lumber and Other Construction Materials Merchant Wholesalers | X | 0.8311 | 0.9215 |

Table 3: Industries with High Desirability and Compatibility Index Scores (Index > .80)

| NAICS4 | Description | Existing | DI | CI |
|--------|--------------------------------------------------------------------------------|----------|--------|--------|
| 4244 | Grocery and Related Product Merchant Wholesalers | X | 0.8309 | 0.9294 |
| 4832 | Inland Water Transportation | X | 0.8299 | 0.9388 |
| 4249 | Miscellaneous Nondurable Goods Merchant Wholesalers | X | 0.8296 | 0.9302 |
| 4821 | Rail Transportation | X | 0.8288 | 0.9221 |
| 4871 | Scenic and Sightseeing Transportation, Land | X | 0.8277 | 0.9224 |
| 5111 | Newspaper, Periodical, Book, and Directory Publishers | X | 0.8273 | 0.9197 |
| 4245 | Farm Product Raw Material Merchant Wholesalers | X | 0.8272 | 0.9273 |
| 4885 | Freight Transportation Arrangement | X | 0.8249 | 0.9134 |
| 4243 | Apparel, Piece Goods, and Notions Merchant Wholesalers | X | 0.8231 | 0.9255 |
| 3343 | Audio and Video Equipment Manufacturing | X | 0.8227 | 0.9293 |
| 8133 | Social Advocacy Organizations | X | 0.8227 | 0.9020 |
| 5151 | Radio and Television Broadcasting | X | 0.8224 | 0.9459 |
| 4421 | Furniture Stores | X | 0.8223 | 0.9173 |
| 3345 | Navigational, Measuring, Electromedical, and Control Instruments Manufacturing | X | 0.8212 | 0.9185 |
| 3273 | Cement and Concrete Product Manufacturing | | 0.8206 | 0.9173 |
| 8132 | Grantmaking and Giving Services | X | 0.8204 | 0.9524 |
| 2131 | Support Activities for Mining | X | 0.8174 | 0.9474 |
| 4931 | Warehousing and Storage | X | 0.8170 | 0.9156 |
| 8139 | Business, Professional, Labor, Political, and Similar Organizations | X | 0.8165 | 0.9412 |
| 5173 | Wired and Wireless Telecommunications Carriers | X | 0.8164 | 0.9276 |
| 4239 | Miscellaneous Durable Goods Merchant Wholesalers | X | 0.8163 | 0.9309 |
| 5322 | Consumer Goods Rental | X | 0.8150 | 0.9126 |
| 5414 | Specialized Design Services | X | 0.8150 | 0.9207 |
| 4231 | Motor Vehicle and Motor Vehicle Parts and Supplies Merchant Wholesalers | X | 0.8144 | 0.9200 |
| 2383 | Building Finishing Contractors | X | 0.8142 | 0.9216 |
| 5239 | Other Financial Investment Activities | X | 0.8140 | 0.9055 |
| 7213 | Rooming and Boarding Houses, Dormitories, and Workers' Camps | X | 0.8137 | 0.9308 |
| 5411 | Legal Services | X | 0.8131 | 0.9389 |
| 2382 | Building Equipment Contractors | X | 0.8121 | 0.9280 |
| 4881 | Support Activities for Air Transportation | X | 0.8120 | 0.9290 |
| 6112 | Junior Colleges | X | 0.8108 | 0.8981 |
| 5221 | Depository Credit Intermediation | X | 0.8103 | 0.9041 |
| 4841 | General Freight Trucking | X | 0.8096 | 0.9272 |
| 3122 | Tobacco Manufacturing | | 0.8092 | 0.9273 |
| 5191 | Other Information Services | X | 0.8092 | 0.9402 |
| 1111 | Oilseed and Grain Farming | X | 0.8085 | 0.9100 |
| 5419 | Other Professional, Scientific, and Technical Services | X | 0.8079 | 0.9324 |
| 3274 | Lime and Gypsum Product Manufacturing | | 0.8068 | 0.9174 |
| 4247 | Petroleum and Petroleum Products Merchant Wholesalers | X | 0.8066 | 0.9425 |
| 3251 | Basic Chemical Manufacturing | X | 0.8062 | 0.9170 |
| 3254 | Pharmaceutical and Medicine Manufacturing | X | 0.8062 | 0.9355 |
| 4412 | Other Motor Vehicle Dealers | X | 0.8060 | 0.9397 |
| 1133 | Logging | X | 0.8055 | 0.9221 |
| 4422 | Home Furnishings Stores | X | 0.8055 | 0.9109 |
| 4889 | Other Support Activities for Transportation | X | 0.8053 | 0.8813 |
| 5629 | Remediation and Other Waste Management Services | X | 0.8047 | 0.9220 |
| 5615 | Travel Arrangement and Reservation Services | X | 0.8045 | 0.9125 |
| 3259 | Other Chemical Product and Preparation Manufacturing | | 0.8044 | 0.9324 |
| 4411 | Automobile Dealers | X | 0.8041 | 0.9158 |
| 3112 | Grain and Oilseed Milling | | 0.8034 | 0.9324 |

Table 3: Industries with High Desirability and Compatibility Index Scores (Index > .80)

| NAICS4 | Description | Existing | DI | CI |
|--------|----------------------------------------------------------------------|----------|--------|--------|
| 2111 | Oil and Gas Extraction | X | 0.8024 | 0.9372 |
| 3256 | Soap, Cleaning Compound, and Toilet Preparation Manufacturing | X | 0.8023 | 0.9075 |
| 1113 | Fruit and Tree Nut Farming | X | 0.8020 | 0.9388 |
| 3342 | Communications Equipment Manufacturing | X | 0.8017 | 0.9568 |
| 3311 | Iron and Steel Mills and Ferroalloy Manufacturing | | 0.8009 | 0.9286 |
| 3346 | Manufacturing and Reproducing Magnetic and Optical Media | | 0.8008 | 0.9254 |
| 4922 | Local Messengers and Local Delivery | X | 0.8008 | 0.9518 |
| 3253 | Pesticide, Fertilizer, and Other Agricultural Chemical Manufacturing | | 0.8004 | 0.9162 |
| 3391 | Medical Equipment and Supplies Manufacturing | X | 0.8003 | 0.9234 |

Table 4: Industries with High Desirability and Compatibility Index Scores (Index > .80)

| NAICS4 | Description | Count |
|--------|-----------------------------------------------------------------------------------------|-------|
| 111 | Crop Production | 2 |
| 113 | Forest and Logging | 2 |
| 211 | Oil and Gas Extraction | 1 |
| 212 | Mining (except Oil and Gas) | 1 |
| 221 | Utilities | 2 |
| 238 | Specialty Trade Contractors | 2 |
| 311 | Food Manufacturing | 1 |
| 312 | Beverage and Tobacco Product Manufacturing | 1 |
| 324 | Petroleum and Coal Products Manufacturing | 1 |
| 325 | Chemical Manufacturing | 5 |
| 327 | Nonmetallic Mineral Product Manufacturing | 2 |
| 331 | Primary Metal Manufacturing | 1 |
| 334 | Computer and Electronic Product Manufacturing | 6 |
| 339 | Miscellaneous Manufacturing | 1 |
| 423 | Merchant Wholesalers, Durable Goods | 8 |
| 424 | Merchant Wholesalers, Nondurable Goods | 9 |
| 441 | Motor Vehicle and Parts Dealers | 2 |
| 442 | Furniture and Home Furnishings Stores | 2 |
| 481 | Air Transportation | 2 |
| 482 | Rail Transportation | 1 |
| 483 | Water Transportation | 1 |
| 484 | Truck Transportation | 1 |
| 486 | Pipeline Transportation | 3 |
| 487 | Scenic and Sightseeing Transportation | 3 |
| 488 | Support Activities for Transportation | 5 |
| 492 | Couriers and Messengers | 1 |
| 511 | Publishing Industries | 2 |
| 512 | Motion Picture and Sound Recording Industries | 1 |
| 515 | Broadcasting | 2 |
| 517 | Telecommunications | 2 |
| 518 | Data Processing, Hosting, and Related Services | 1 |
| 522 | Credit Intermediation and Related Activities | 3 |
| 523 | Securities, Commodity Contracts, and Other Financial Investments and Related Activities | 3 |
| 524 | Insurance Carriers and Related Activities | 2 |
| 532 | Rental and Leasing Services | 2 |
| 533 | Lessors of Nonfinancial Intangible Assets | 1 |
| 541 | Professional, Scientific, and Technical Services | 9 |
| 551 | Management of Companies and Enterprises | 1 |
| 561 | Administrative and Support Services | 1 |
| 562 | Waste Management and Remediation Services | 1 |
| 611 | Educational Services | 2 |
| 621 | Ambulatory Health Care Services | 2 |
| 711 | Performing Arts, Spectator Sports, and Related Industries | 1 |

| | | |
|-----|------------------------------------------------------------------------|---|
| 721 | Accomodation | 1 |
| 813 | Religious, Grantmaking, Civic, Professional, and Similar Organizations | 3 |

Table 5: Santa Fe County, NM Target Industries

| NAICS4 | Description | Existing | DI | CI |
|--------|--------------------------------------------------------------------------------|----------|--------|--------|
| 1113 | Fruit and Tree Nut Farming | X | 0.8020 | 0.9388 |
| 2211 | Electric Power Generation, Transmission and Distribution | X | 0.8355 | 0.9239 |
| 3254 | Pharmaceutical and Medicine Manufacturing | X | 0.8062 | 0.9355 |
| 3273 | Cement and Concrete Product Manufacturing | | 0.8206 | 0.9173 |
| 3341 | Computer and Peripheral Equipment Manufacturing | | 0.8378 | 0.9400 |
| 3342 | Communications Equipment Manufacturing | X | 0.8017 | 0.9568 |
| 3343 | Audio and Video Equipment Manufacturing | X | 0.8227 | 0.9293 |
| 3344 | Semiconductor and Other Electronic Component Manufacturing | | 0.8591 | 0.9107 |
| 3345 | Navigational, Measuring, Electromedical, and Control Instruments Manufacturing | X | 0.8212 | 0.9185 |
| 3346 | Manufacturing and Reproducing Magnetic and Optical Media | | 0.8008 | 0.9254 |
| 3391 | Medical Equipment and Supplies Manufacturing | X | 0.8003 | 0.9234 |
| 4239 | Miscellaneous Durable Goods Merchant Wholesalers | X | 0.8163 | 0.9309 |
| 4811 | Scheduled Air Transportation | X | 0.8603 | 0.9299 |
| 4879 | Scenic and Sightseeing Transportation, Other | X | 0.8347 | 0.9328 |
| 4881 | Support Activities for Air Transportation | X | 0.8120 | 0.9290 |
| 4889 | Other Support Activities for Transportation | X | 0.8053 | 0.8813 |
| 4931 | Warehousing and Storage | X | 0.8170 | 0.9156 |
| 5112 | Software Publishers | X | 0.8764 | 0.9391 |
| 5121 | Motion Picture and Video Industries | X | 0.8428 | 0.9262 |
| 5179 | Other Telecommunications | X | 0.8458 | 0.9455 |
| 5182 | Data Processing, Hosting, and Related Services | X | 0.8509 | 0.9474 |
| 5191 | Other Information Services | X | 0.8092 | 0.9402 |
| 5239 | Other Finance Investment Activities | X | 0.8140 | 0.9055 |
| 5413 | Architectural, Engineering, and Related Services | X | 0.8440 | 0.9209 |
| 5414 | Specialized Design Services | X | 0.8150 | 0.9207 |
| 5415 | Computer Systems Design and Related Services | X | 0.8527 | 0.9263 |
| 5416 | Management, Scientific, and Technical Consulting Services | X | 0.8404 | 0.9312 |
| 5417 | Scientific Research and Development Services | X | 0.8751 | 0.9259 |
| 5419 | Other Professional, Scientific, and Technical Services | X | 0.8079 | 0.9324 |
| 5511 | Management of Companies and Enterprises | X | 0.8803 | 0.9128 |
| 5615 | Travel Arrangement and Reservation Services | X | 0.8045 | 0.9125 |
| 6214 | Outpatient Care Centers | X | 0.8526 | 0.9153 |
| 6215 | Medical and Diagnostic Laboratories | X | 0.8320 | 0.9241 |
| 6231 | Nursing Care Facilities (Skilled Nursing Facilities) | X | 0.7736 | 0.9474 |
| 7139 | Other Amusement and Recreation Industries | X | 0.7745 | 0.9388 |

Table 6: Industries with High Desirability Index Scores (DI > .80)

| NAICS4 | Description | Existing | DI | CI |
|--------|-----------------------------------------------------------------------------------|----------|--------|--------|
| 4861 | Pipeline Transportation of Crude Oil | X | 0.9766 | 0.9798 |
| 4869 | Other Pipeline Transportation | X | 0.9738 | 0.9001 |
| 4862 | Pipeline Transportation of Natural Gas | X | 0.9360 | 0.9177 |
| 5152 | Cable and Other Subscription Programming | X | 0.9235 | 0.9348 |
| 2212 | Natural Gas Distribution | X | 0.8814 | 0.9392 |
| 5511 | Management of Companies and Enterprises | X | 0.8803 | 0.9128 |
| 5112 | Software Publishers | X | 0.8764 | 0.9391 |
| 5417 | Scientific Research and Development Services | X | 0.8751 | 0.9259 |
| 5331 | Lessors of Nonfinancial Intangible Assets (except Copyrighted Works) | X | 0.8673 | 0.9283 |
| 4242 | Drugs and Druggists' Sundries Merchant Wholesalers | X | 0.8630 | 0.9264 |
| 4234 | Professional and Commercial Equipment and Supplies Merchant Wholesalers | X | 0.8621 | 0.9285 |
| 4811 | Scheduled Air Transportation | X | 0.8603 | 0.9299 |
| 3344 | Semiconductor and Other Electronic Component Manufacturing | | 0.8591 | 0.9107 |
| 5241 | Insurance Carriers | X | 0.8567 | 0.9528 |
| 4236 | Household Appliances and Electrical and Electronic Goods Merchant Wholesalers | X | 0.8538 | 0.9238 |
| 5415 | Computer Systems Design and Related Services | X | 0.8527 | 0.9263 |
| 6214 | Outpatient Care Centers | X | 0.8526 | 0.9153 |
| 4882 | Support Activities for Rail Transportation | X | 0.8521 | 0.9154 |
| 5231 | Securities and Commodity Contracts Intermediation and Brokerage | X | 0.8517 | 0.9294 |
| 5182 | Data Processing, Hosting, and Related Services | X | 0.8509 | 0.9474 |
| 3241 | Petroleum and Coal Products Manufacturing | X | 0.8499 | 0.9217 |
| 5232 | Securities and Commodity Exchanges | X | 0.8487 | 0.9379 |
| 4812 | Nonscheduled Air Transportation | X | 0.8478 | 0.9184 |
| 2121 | Coal Mining | | 0.8465 | 0.9570 |
| 5179 | Other Telecommunications | X | 0.8458 | 0.9455 |
| 1131 | Timber Tract Operations | X | 0.8455 | 0.9245 |
| 6113 | Colleges, Universities, and Professional Schools | X | 0.8448 | 0.9400 |
| 5413 | Architectural, Engineering, and Related Services | X | 0.8440 | 0.9209 |
| 4883 | Support Activities for Water Transportation | X | 0.8439 | 0.9241 |
| 5121 | Motion Picture and Video Industries | X | 0.8428 | 0.9262 |
| 5223 | Activities Related to Credit Intermediation | X | 0.8426 | 0.9351 |
| 4248 | Beer, Wine, and Distilled Alcoholic Beverage Merchant Wholesalers | X | 0.8416 | 0.9137 |
| 4872 | Scenic and Sightseeing Transportation, Water | X | 0.8414 | 0.9385 |
| 4237 | Hardware, and Plumbing and Heating Equipment and Supplies Merchant Wholesalers | X | 0.8404 | 0.9232 |
| 5416 | Management, Scientific, and Technical Consulting Services | X | 0.8404 | 0.9312 |
| 5242 | Agencies, Brokerages, and Other Insurance Related Activities | X | 0.8400 | 0.9130 |
| 5412 | Accounting, Tax Preparation, Bookkeeping, and Payroll Services | X | 0.8398 | 0.9503 |
| 5418 | Advertising, Public Relations, and Related Services | X | 0.8386 | 0.9299 |
| 3341 | Computer and Peripheral Equipment Manufacturing | | 0.8378 | 0.9400 |
| 4241 | Paper and Paper Product Merchant Wholesalers | X | 0.8377 | 0.9254 |
| 5222 | Nondepository Credit Intermediation | X | 0.8369 | 0.9212 |
| 4238 | Machinery, Equipment, and Supplies Merchant Wholesalers | X | 0.8366 | 0.9213 |
| 4246 | Chemical and Allied Products Merchant Wholesalers | X | 0.8358 | 0.9193 |
| 2211 | Electric Power Generation, Transmission and Distribution | X | 0.8355 | 0.9239 |
| 4235 | Metal and Mineral (except Petroleum) Merchant Wholesalers | X | 0.8348 | 0.9219 |
| 4879 | Scenic and Sightseeing Transportation, Other | X | 0.8347 | 0.9328 |
| 7114 | Agents and Managers for Artists, Athletes, Entertainers, and Other Public Figures | X | 0.8321 | 0.9133 |
| 5321 | Automotive Equipment Rental and Leasing | X | 0.8320 | 0.9076 |
| 6215 | Medical and Diagnostic Laboratories | X | 0.8320 | 0.9241 |

Table 6: Industries with High Desirability Index Scores (DI > .80)

| NAICS4 | Description | Existing | DI | CI |
|--------|--------------------------------------------------------------------------------|----------|--------|--------|
| 4233 | Lumber and Other Construction Materials Merchant Wholesalers | X | 0.8311 | 0.9215 |
| 4244 | Grocery and Related Product Merchant Wholesalers | X | 0.8309 | 0.9294 |
| 4832 | Inland Water Transportation | X | 0.8299 | 0.9388 |
| 4249 | Miscellaneous Nondurable Goods Merchant Wholesalers | X | 0.8296 | 0.9302 |
| 4821 | Rail Transportation | X | 0.8288 | 0.9221 |
| 4871 | Scenic and Sightseeing Transportation, Land | X | 0.8277 | 0.9224 |
| 5111 | Newspaper, Periodical, Book, and Directory Publishers | X | 0.8273 | 0.9197 |
| 4245 | Farm Product Raw Material Merchant Wholesalers | X | 0.8272 | 0.9273 |
| 4885 | Freight Transportation Arrangement | X | 0.8249 | 0.9134 |
| 4243 | Apparel, Piece Goods, and Notions Merchant Wholesalers | X | 0.8231 | 0.9255 |
| 3343 | Audio and Video Equipment Manufacturing | X | 0.8227 | 0.9293 |
| 8133 | Social Advocacy Organizations | X | 0.8227 | 0.9020 |
| 5151 | Radio and Television Broadcasting | X | 0.8224 | 0.9459 |
| 4421 | Furniture Stores | X | 0.8223 | 0.9173 |
| 3345 | Navigational, Measuring, Electromedical, and Control Instruments Manufacturing | X | 0.8212 | 0.9185 |
| 3273 | Cement and Concrete Product Manufacturing | | 0.8206 | 0.9173 |
| 8132 | Grantmaking and Giving Services | X | 0.8204 | 0.9524 |
| 2131 | Support Activities for Mining | X | 0.8174 | 0.9474 |
| 4931 | Warehousing and Storage | X | 0.8170 | 0.9156 |
| 8139 | Business, Professional, Labor, Political, and Similar Organizations | X | 0.8165 | 0.9412 |
| 5173 | Wired and Wireless Telecommunications Carriers | X | 0.8164 | 0.9276 |
| 4239 | Miscellaneous Durable Goods Merchant Wholesalers | X | 0.8163 | 0.9309 |
| 5322 | Consumer Goods Rental | X | 0.8150 | 0.9126 |
| 5414 | Specialized Design Services | X | 0.8150 | 0.9207 |
| 4231 | Motor Vehicle and Motor Vehicle Parts and Supplies Merchant Wholesalers | X | 0.8144 | 0.9200 |
| 2383 | Building Finishing Contractors | X | 0.8142 | 0.9216 |
| 5239 | Other Financial Investment Activities | X | 0.8140 | 0.9055 |
| 7213 | Rooming and Boarding Houses, Dormitories, and Workers' Camps | X | 0.8137 | 0.9308 |
| 5411 | Legal Services | X | 0.8131 | 0.9389 |
| 2382 | Building Equipment Contractors | X | 0.8121 | 0.9280 |
| 4881 | Support Activities for Air Transportation | X | 0.8120 | 0.9290 |
| 6112 | Junior Colleges | X | 0.8108 | 0.8981 |
| 5221 | Depository Credit Intermediation | X | 0.8103 | 0.9041 |
| 4841 | General Freight Trucking | X | 0.8096 | 0.9272 |
| 3122 | Tobacco Manufacturing | | 0.8092 | 0.9273 |
| 5191 | Other Information Services | X | 0.8092 | 0.9402 |
| 1111 | Oilseed and Grain Farming | X | 0.8085 | 0.9100 |
| 5419 | Other Professional, Scientific, and Technical Services | X | 0.8079 | 0.9324 |
| 3274 | Lime and Gypsum Product Manufacturing | | 0.8068 | 0.9174 |
| 4247 | Petroleum and Petroleum Products Merchant Wholesalers | X | 0.8066 | 0.9425 |
| 3251 | Basic Chemical Manufacturing | X | 0.8062 | 0.9170 |
| 3254 | Pharmaceutical and Medicine Manufacturing | X | 0.8062 | 0.9355 |
| 4412 | Other Motor Vehicle Dealers | X | 0.8060 | 0.9397 |
| 1133 | Logging | X | 0.8055 | 0.9221 |
| 4422 | Home Furnishings Stores | X | 0.8055 | 0.9109 |
| 4889 | Other Support Activities for Transportation | X | 0.8053 | 0.8813 |
| 5629 | Remediation and Other Waste Management Services | X | 0.8047 | 0.9220 |
| 5615 | Travel Arrangement and Reservation Services | X | 0.8045 | 0.9125 |
| 3259 | Other Chemical Product and Preparation Manufacturing | | 0.8044 | 0.9324 |

Table 6: Industries with High Desirability Index Scores (DI > .80)

| NAICS4 | Description | Existing | DI | CI |
|--------|----------------------------------------------------------------------|----------|--------|--------|
| 4411 | Automobile Dealers | X | 0.8041 | 0.9158 |
| 3112 | Grain and Oilseed Milling | | 0.8034 | 0.9324 |
| 2111 | Oil and Gas Extraction | X | 0.8024 | 0.9372 |
| 3256 | Soap, Cleaning Compound, and Toilet Preparation Manufacturing | X | 0.8023 | 0.9075 |
| 1113 | Fruit and Tree Nut Farming | X | 0.8020 | 0.9388 |
| 3342 | Communications Equipment Manufacturing | X | 0.8017 | 0.9568 |
| 3311 | Iron and Steel Mills and Ferroalloy Manufacturing | | 0.8009 | 0.9286 |
| 3346 | Manufacturing and Reproducing Magnetic and Optical Media | | 0.8008 | 0.9254 |
| 4922 | Local Messengers and Local Delivery | X | 0.8008 | 0.9518 |
| 3253 | Pesticide, Fertilizer, and Other Agricultural Chemical Manufacturing | | 0.8004 | 0.9162 |
| 3391 | Medical Equipment and Supplies Manufacturing | X | 0.8003 | 0.9234 |

Table 7: Industries with High Compatibility Index Scores (CI > .80)

| NAICS4 | Description | Existing | DI | CI |
|--------|-------------------------------------------------------------------------------------------|----------|--------|--------|
| 5617 | Services to Buildings and Dwellings | X | 0.7694 | 1.0000 |
| 4853 | Taxi and Limousine Service | X | 0.7537 | 0.9887 |
| 8134 | Civic and Social Organizations | X | 0.7818 | 0.9811 |
| 8131 | Religious Organizations | X | 0.7969 | 0.9806 |
| 4861 | Pipeline Transportation of Crude Oil | X | 0.9766 | 0.9798 |
| 4533 | Used Merchandise Stores | X | 0.7860 | 0.9609 |
| 1122 | Hog and Pig Farming | X | 0.7776 | 0.9588 |
| 3149 | Other Textile Product Mills | X | 0.7297 | 0.9579 |
| 2121 | Coal Mining | | 0.8465 | 0.9570 |
| 3342 | Communications Equipment Manufacturing | X | 0.8017 | 0.9568 |
| 4541 | Electronic Shopping and Mail-Order Houses | X | 0.7956 | 0.9563 |
| 6114 | Business Schools and Computer and Management Training | X | 0.7717 | 0.9532 |
| 5241 | Insurance Carriers | X | 0.8567 | 0.9528 |
| 8132 | Grantmaking and Giving Services | X | 0.8204 | 0.9524 |
| 4922 | Local Messengers and Local Delivery | X | 0.8008 | 0.9518 |
| 4543 | Direct Selling Establishments | X | 0.7688 | 0.9512 |
| 5412 | Accounting, Tax Preparation, Bookkeeping, and Payroll Services | X | 0.8398 | 0.9503 |
| 3261 | Plastics Product Manufacturing | X | 0.7391 | 0.9495 |
| 2131 | Support Activities for Mining | X | 0.8174 | 0.9474 |
| 5182 | Data Processing, Hosting, and Related Services | X | 0.8509 | 0.9474 |
| 6231 | Nursing Care Facilities (Skilled Nursing Facilities) | X | 0.7736 | 0.9474 |
| 4512 | Book Stores and News Dealers | X | 0.7971 | 0.9472 |
| 5151 | Radio and Television Broadcasting | X | 0.8224 | 0.9459 |
| 5122 | Sound Recording Industries | X | 0.7789 | 0.9455 |
| 5179 | Other Telecommunications | X | 0.8458 | 0.9455 |
| 4511 | Sporting Goods, Hobby, and Musical Instrument Stores | X | 0.7966 | 0.9452 |
| 4441 | Building Material and Supplies Dealers | X | 0.7916 | 0.9447 |
| 6116 | Other Schools and Instruction | X | 0.7676 | 0.9445 |
| 8112 | Electronic and Precision Equipment Repair and Maintenance | X | 0.7672 | 0.9441 |
| 2379 | Other Heavy and Civil Engineering Construction | X | 0.7391 | 0.9425 |
| 4247 | Petroleum and Petroleum Products Merchant Wholesalers | X | 0.8066 | 0.9425 |
| 4531 | Florists | X | 0.7596 | 0.9425 |
| 4855 | Charter Bus Industry | X | 0.7340 | 0.9425 |
| 5613 | Employment Services | X | 0.7862 | 0.9425 |
| 6241 | Individual and Family Services | X | 0.7578 | 0.9420 |
| 7212 | RV (Recreational Vehicle) Parks and Recreational Camps | X | 0.7926 | 0.9418 |
| 4921 | Couriers and Express Delivery Services | X | 0.7640 | 0.9413 |
| 4251 | Wholesale Electronic Markets and Agents and Brokers | X | 0.7793 | 0.9412 |
| 8139 | Business, Professional, Labor, Political, and Similar Organizations | X | 0.8165 | 0.9412 |
| 5191 | Other Information Services | X | 0.8092 | 0.9402 |
| 3341 | Computer and Peripheral Equipment Manufacturing | | 0.8378 | 0.9400 |
| 6113 | Colleges, Universities, and Professional Schools | X | 0.8448 | 0.9400 |
| 8113 | Commercial and Industrial Machinery and Equipment (except Automotive and Electronic) Repa | X | 0.7929 | 0.9398 |
| 4412 | Other Motor Vehicle Dealers | X | 0.8060 | 0.9397 |
| 5313 | Activities Related to Real Estate | X | 0.7816 | 0.9396 |
| 3231 | Printing and Related Support Activities | X | 0.7565 | 0.9393 |
| 5621 | Waste Collection | X | 0.6453 | 0.9393 |
| 2212 | Natural Gas Distribution | X | 0.8814 | 0.9392 |
| 5112 | Software Publishers | X | 0.8764 | 0.9391 |

Table 7: Industries with High Compatibility Index Scores (CI > .80)

| NAICS4 | Description | Existing | DI | CI |
|--------|-------------------------------------------------------------------------|----------|--------|--------|
| 5411 | Legal Services | X | 0.8131 | 0.9389 |
| 1113 | Fruit and Tree Nut Farming | X | 0.8020 | 0.9388 |
| 4832 | Inland Water Transportation | X | 0.8299 | 0.9388 |
| 7139 | Other Amusement and Recreation Industries | X | 0.7745 | 0.9388 |
| 1152 | Support Activities for Animal Production | X | 0.7450 | 0.9386 |
| 4872 | Scenic and Sightseeing Transportation, Water | X | 0.8414 | 0.9385 |
| 2361 | Residential Building Construction | X | 0.7976 | 0.9380 |
| 5232 | Securities and Commodity Exchanges | X | 0.8487 | 0.9379 |
| 3116 | Animal Slaughtering and Processing | X | 0.7585 | 0.9375 |
| 3359 | Other Electrical Equipment and Component Manufacturing | X | 0.7744 | 0.9374 |
| 2111 | Oil and Gas Extraction | X | 0.8024 | 0.9372 |
| 1124 | Sheep and Goat Farming | X | 0.7544 | 0.9367 |
| 5619 | Other Support Services | X | 0.7833 | 0.9367 |
| 6239 | Other Residential Care Facilities | X | 0.7749 | 0.9364 |
| 4852 | Interurban and Rural Bus Transportation | X | 0.7590 | 0.9362 |
| 1119 | Other Crop Farming | X | 0.6850 | 0.9360 |
| 1153 | Support Activities for Forestry | X | 0.7579 | 0.9359 |
| 5251 | Insurance and Employee Benefit Funds | X | 0.7983 | 0.9357 |
| 8114 | Personal and Household Goods Repair and Maintenance | X | 0.7728 | 0.9356 |
| 3254 | Pharmaceutical and Medicine Manufacturing | X | 0.8062 | 0.9355 |
| 1129 | Other Animal Production | X | 0.7548 | 0.9354 |
| 3131 | Fiber, Yarn, and Thread Mills | | 0.7301 | 0.9352 |
| 5223 | Activities Related to Credit Intermediation | X | 0.8426 | 0.9351 |
| 5152 | Cable and Other Subscription Programming | X | 0.9235 | 0.9348 |
| 3212 | Veneer, Plywood, and Engineered Wood Product Manufacturing | X | 0.7725 | 0.9346 |
| 3333 | Commercial and Service Industry Machinery Manufacturing | | 0.7897 | 0.9345 |
| 3363 | Motor Vehicle Parts Manufacturing | X | 0.7350 | 0.9344 |
| 3271 | Clay Product and Refractory Manufacturing | X | 0.7810 | 0.9340 |
| 4481 | Clothing Stores | X | 0.7784 | 0.9340 |
| 1132 | Forest Nurseries and Gathering of Forest Products | X | 0.7610 | 0.9338 |
| 3371 | Household and Institutional Furniture and Kitchen Cabinet Manufacturing | X | 0.7634 | 0.9338 |
| 3379 | Other Furniture Related Product Manufacturing | | 0.7739 | 0.9335 |
| 3121 | Beverage Manufacturing | X | 0.7534 | 0.9334 |
| 3353 | Electrical Equipment Manufacturing | | 0.7977 | 0.9332 |
| 4542 | Vending Machine Operators | X | 0.7842 | 0.9332 |
| 4879 | Scenic and Sightseeing Transportation, Other | X | 0.8347 | 0.9328 |
| 2372 | Land Subdivision | X | 0.7805 | 0.9325 |
| 3112 | Grain and Oilseed Milling | | 0.8034 | 0.9324 |
| 3259 | Other Chemical Product and Preparation Manufacturing | | 0.8044 | 0.9324 |
| 5419 | Other Professional, Scientific, and Technical Services | X | 0.8079 | 0.9324 |
| 3272 | Glass and Glass Product Manufacturing | X | 0.7767 | 0.9321 |
| 5616 | Investigation and Security Services | X | 0.7709 | 0.9321 |
| 1142 | Hunting and Trapping | X | 0.7494 | 0.9319 |
| 3324 | Boiler, Tank, and Shipping Container Manufacturing | | 0.7510 | 0.9319 |
| 3369 | Other Transportation Equipment Manufacturing | | 0.7277 | 0.9319 |
| 3151 | Apparel Knitting Mills | X | 0.6743 | 0.9318 |
| 7112 | Spectator Sports | X | 0.7585 | 0.9314 |
| 1141 | Fishing | | 0.7965 | 0.9313 |
| 4859 | Other Transit and Ground Passenger Transportation | X | 0.7581 | 0.9312 |

Table 7: Industries with High Compatibility Index Scores (CI > .80)

| NAICS4 | Description | Existing | DI | CI |
|--------|---------------------------------------------------------------------------------------------|----------|--------|--------|
| 5416 | Management, Scientific, and Technical Consulting Services | X | 0.8404 | 0.9312 |
| 3334 | Ventilation, Heating, Air-Conditioning, and Commercial Refrigeration Equipment Manufacturin | | 0.7576 | 0.9311 |
| 3219 | Other Wood Product Manufacturing | X | 0.7691 | 0.9309 |
| 4239 | Miscellaneous Durable Goods Merchant Wholesalers | X | 0.8163 | 0.9309 |
| 7213 | Rooming and Boarding Houses, Dormitories, and Workers' Camps | X | 0.8137 | 0.9308 |
| 8122 | Death Care Services | X | 0.7573 | 0.9308 |
| 3119 | Other Food Manufacturing | X | 0.7730 | 0.9304 |
| 5614 | Business Support Services | X | 0.7790 | 0.9303 |
| 4249 | Miscellaneous Nondurable Goods Merchant Wholesalers | X | 0.8296 | 0.9302 |
| 3364 | Aerospace Product and Parts Manufacturing | X | 0.7698 | 0.9300 |
| 1125 | Aquaculture | X | 0.7511 | 0.9299 |
| 4811 | Scheduled Air Transportation | X | 0.8603 | 0.9299 |
| 5418 | Advertising, Public Relations, and Related Services | X | 0.8386 | 0.9299 |
| 4244 | Grocery and Related Product Merchant Wholesalers | X | 0.8309 | 0.9294 |
| 5231 | Securities and Commodity Contracts Intermediation and Brokerage | X | 0.8517 | 0.9294 |
| 3343 | Audio and Video Equipment Manufacturing | X | 0.8227 | 0.9293 |
| 6115 | Technical and Trade Schools | X | 0.7481 | 0.9292 |
| 3159 | Apparel Accessories and Other Apparel Manufacturing | X | 0.7219 | 0.9290 |
| 3335 | Metalworking Machinery Manufacturing | | 0.7360 | 0.9290 |
| 4881 | Support Activities for Air Transportation | X | 0.8120 | 0.9290 |
| 6216 | Home Health Care Services | X | 0.7798 | 0.9290 |
| 1151 | Support Activities for Crop Production | X | 0.7345 | 0.9289 |
| 3113 | Sugar and Confectionery Product Manufacturing | X | 0.7935 | 0.9289 |
| 2381 | Foundation, Structure, and Building Exterior Contractors | X | 0.7778 | 0.9287 |
| 3311 | Iron and Steel Mills and Ferroalloy Manufacturing | | 0.8009 | 0.9286 |
| 3132 | Fabric Mills | | 0.7277 | 0.9285 |
| 4234 | Professional and Commercial Equipment and Supplies Merchant Wholesalers | X | 0.8621 | 0.9285 |
| 6111 | Elementary and Secondary Schools | X | 0.7602 | 0.9285 |
| 5331 | Lessors of Nonfinancial Intangible Assets (except Copyrighted Works) | X | 0.8673 | 0.9283 |
| 3331 | Agriculture, Construction, and Mining Machinery Manufacturing | | 0.7666 | 0.9281 |
| 2382 | Building Equipment Contractors | X | 0.8121 | 0.9280 |
| 3211 | Sawmills and Wood Preservation | X | 0.7862 | 0.9279 |
| 5611 | Office Administrative Services | X | 0.7736 | 0.9278 |
| 5173 | Wired and Wireless Telecommunications Carriers | X | 0.8164 | 0.9276 |
| 3325 | Hardware Manufacturing | X | 0.7625 | 0.9274 |
| 3122 | Tobacco Manufacturing | | 0.8092 | 0.9273 |
| 4245 | Farm Product Raw Material Merchant Wholesalers | X | 0.8272 | 0.9273 |
| 6117 | Educational Support Services | X | 0.7640 | 0.9273 |
| 8121 | Personal Care Services | X | 0.7899 | 0.9273 |
| 4841 | General Freight Trucking | X | 0.8096 | 0.9272 |
| 2123 | Nonmetallic Mineral Mining and Quarrying | X | 0.7874 | 0.9271 |
| 3332 | Industrial Machinery Manufacturing | X | 0.7716 | 0.9271 |
| 9261 | Administration of Economic Programs | | 0.7240 | 0.9270 |
| 3372 | Office Furniture (including Fixtures) Manufacturing | | 0.7744 | 0.9268 |
| 3255 | Paint, Coating, and Adhesive Manufacturing | | 0.7932 | 0.9264 |
| 3279 | Other Nonmetallic Mineral Product Manufacturing | X | 0.7884 | 0.9264 |
| 3336 | Engine, Turbine, and Power Transmission Equipment Manufacturing | | 0.7874 | 0.9264 |
| 4242 | Drugs and Druggists' Sundries Merchant Wholesalers | X | 0.8630 | 0.9264 |
| 5415 | Computer Systems Design and Related Services | X | 0.8527 | 0.9263 |

Table 7: Industries with High Compatibility Index Scores (CI > .80)

| NAICS4 | Description | Existing | DI | CI |
|--------|-----------------------------------------------------------------------------------------------|----------|--------|--------|
| 5121 | Motion Picture and Video Industries | X | 0.8428 | 0.9262 |
| 3315 | Foundries | | 0.7871 | 0.9260 |
| 5417 | Scientific Research and Development Services | X | 0.8751 | 0.9259 |
| 4442 | Lawn and Garden Equipment and Supplies Stores | X | 0.7689 | 0.9258 |
| 6212 | Offices of Dentists | X | 0.7770 | 0.9256 |
| 3314 | Nonferrous Metal (except Aluminum) Production and Processing | X | 0.7747 | 0.9255 |
| 4243 | Apparel, Piece Goods, and Notions Merchant Wholesalers | X | 0.8231 | 0.9255 |
| 3346 | Manufacturing and Reproducing Magnetic and Optical Media | | 0.8008 | 0.9254 |
| 4241 | Paper and Paper Product Merchant Wholesalers | X | 0.8377 | 0.9254 |
| 1121 | Cattle Ranching and Farming | X | 0.7432 | 0.9253 |
| 3352 | Household Appliance Manufacturing | | 0.7772 | 0.9252 |
| 6242 | Community Food and Housing, and Emergency and Other Relief Services | X | 0.6698 | 0.9252 |
| 3312 | Steel Product Manufacturing from Purchased Steel | | 0.7575 | 0.9249 |
| 1112 | Vegetable and Melon Farming | X | 0.7960 | 0.9248 |
| 3366 | Ship and Boat Building | | 0.7409 | 0.9247 |
| 1131 | Timber Tract Operations | X | 0.8455 | 0.9245 |
| 3328 | Coating, Engraving, Heat Treating, and Allied Activities | X | 0.7743 | 0.9245 |
| 3161 | Leather and Hide Tanning and Finishing | | 0.7246 | 0.9242 |
| 8129 | Other Personal Services | X | 0.7694 | 0.9242 |
| 4883 | Support Activities for Water Transportation | X | 0.8439 | 0.9241 |
| 6215 | Medical and Diagnostic Laboratories | X | 0.8320 | 0.9241 |
| 6244 | Child Day Care Services | X | 0.7785 | 0.9240 |
| 2211 | Electric Power Generation, Transmission and Distribution | X | 0.8355 | 0.9239 |
| 3361 | Motor Vehicle Manufacturing | | 0.7726 | 0.9239 |
| 4236 | Household Appliances and Electrical and Electronic Goods Merchant Wholesalers | X | 0.8538 | 0.9238 |
| 7113 | Promoters of Performing Arts, Sports, and Similar Events | X | 0.7962 | 0.9235 |
| 3391 | Medical Equipment and Supplies Manufacturing | X | 0.8003 | 0.9234 |
| 4237 | Hardware, and Plumbing and Heating Equipment and Supplies Merchant Wholesalers | X | 0.8404 | 0.9232 |
| 4431 | Electronics and Appliance Stores | X | 0.7848 | 0.9232 |
| 3115 | Dairy Product Manufacturing | | 0.7796 | 0.9231 |
| 3322 | Cutlery and Handtool Manufacturing | X | 0.7658 | 0.9228 |
| 2373 | Highway, Street, and Bridge Construction | X | 0.7595 | 0.9224 |
| 4871 | Scenic and Sightseeing Transportation, Land | X | 0.8277 | 0.9224 |
| 2362 | Nonresidential Building Construction | X | 0.7760 | 0.9223 |
| 3329 | Other Fabricated Metal Product Manufacturing | X | 0.7544 | 0.9223 |
| 7121 | Museums, Historical Sites, and Similar Institutions | X | 0.7610 | 0.9223 |
| 3365 | Railroad Rolling Stock Manufacturing | | 0.7597 | 0.9222 |
| 1133 | Logging | X | 0.8055 | 0.9221 |
| 4821 | Rail Transportation | X | 0.8288 | 0.9221 |
| 1114 | Greenhouse, Nursery, and Floriculture Production | X | 0.7362 | 0.9220 |
| 5259 | Other Investment Pools and Funds | X | 0.7950 | 0.9220 |
| 5629 | Remediation and Other Waste Management Services | X | 0.8047 | 0.9220 |
| 4235 | Metal and Mineral (except Petroleum) Merchant Wholesalers | X | 0.8348 | 0.9219 |
| 4851 | Urban Transit Systems | X | 0.7304 | 0.9219 |
| 3362 | Motor Vehicle Body and Trailer Manufacturing | | 0.7409 | 0.9218 |
| 3241 | Petroleum and Coal Products Manufacturing | X | 0.8499 | 0.9217 |
| 5312 | Offices of Real Estate Agents and Brokers | X | 0.7649 | 0.9217 |
| 2383 | Building Finishing Contractors | X | 0.8142 | 0.9216 |
| 6232 | Residential Intellectual and Developmental Disability, Mental Health, and Substance Abuse Fac | X | 0.7825 | 0.9216 |

Table 7: Industries with High Compatibility Index Scores (CI > .80)

| NAICS4 | Description | Existing | DI | CI |
|--------|------------------------------------------------------------------------------------------|----------|--------|--------|
| 4233 | Lumber and Other Construction Materials Merchant Wholesalers | X | 0.8311 | 0.9215 |
| 3252 | Resin, Synthetic Rubber, and Artificial and Synthetic Fibers and Filaments Manufacturing | X | 0.7871 | 0.9213 |
| 4238 | Machinery, Equipment, and Supplies Merchant Wholesalers | X | 0.8366 | 0.9213 |
| 5222 | Nondepository Credit Intermediation | X | 0.8369 | 0.9212 |
| 2213 | Water, Sewage and Other Systems | X | 0.7393 | 0.9211 |
| 5413 | Architectural, Engineering, and Related Services | X | 0.8440 | 0.9209 |
| 3117 | Seafood Product Preparation and Packaging | | 0.7562 | 0.9207 |
| 3321 | Forging and Stamping | | 0.7648 | 0.9207 |
| 5414 | Specialized Design Services | X | 0.8150 | 0.9207 |
| 3169 | Other Leather and Allied Product Manufacturing | X | 0.7345 | 0.9204 |
| 4231 | Motor Vehicle and Motor Vehicle Parts and Supplies Merchant Wholesalers | X | 0.8144 | 0.9200 |
| 3152 | Cut and Sew Apparel Manufacturing | X | 0.7157 | 0.9199 |
| 3326 | Spring and Wire Product Manufacturing | | 0.7468 | 0.9199 |
| 5111 | Newspaper, Periodical, Book, and Directory Publishers | X | 0.8273 | 0.9197 |
| 4539 | Other Miscellaneous Store Retailers | X | 0.7491 | 0.9194 |
| 4246 | Chemical and Allied Products Merchant Wholesalers | X | 0.8358 | 0.9193 |
| 5622 | Waste Treatment and Disposal | X | 0.7877 | 0.9191 |
| 4452 | Specialty Food Stores | X | 0.7779 | 0.9190 |
| 3221 | Pulp, Paper, and Paperboard Mills | X | 0.7577 | 0.9189 |
| 3141 | Textile Furnishings Mills | X | 0.7024 | 0.9185 |
| 3345 | Navigational, Measuring, Electromedical, and Control Instruments Manufacturing | X | 0.8212 | 0.9185 |
| 4812 | Nonscheduled Air Transportation | X | 0.8478 | 0.9184 |
| 2389 | Other Specialty Trade Contractors | X | 0.7449 | 0.9182 |
| 5311 | Lessors of Real Estate | X | 0.7751 | 0.9182 |
| 3351 | Electric Lighting Equipment Manufacturing | X | 0.7773 | 0.9180 |
| 3399 | Other Miscellaneous Manufacturing | X | 0.7596 | 0.9178 |
| 4862 | Pipeline Transportation of Natural Gas | X | 0.9360 | 0.9177 |
| 3262 | Rubber Product Manufacturing | | 0.7585 | 0.9176 |
| 3274 | Lime and Gypsum Product Manufacturing | | 0.8068 | 0.9174 |
| 3273 | Cement and Concrete Product Manufacturing | | 0.8206 | 0.9173 |
| 4421 | Furniture Stores | X | 0.8223 | 0.9173 |
| 3114 | Fruit and Vegetable Preserving and Specialty Food Manufacturing | X | 0.7331 | 0.9172 |
| 7223 | Special Food Services | X | 0.7800 | 0.9171 |
| 3251 | Basic Chemical Manufacturing | X | 0.8062 | 0.9170 |
| 3313 | Alumina and Aluminum Production and Processing | | 0.7841 | 0.9163 |
| 3253 | Pesticide, Fertilizer, and Other Agricultural Chemical Manufacturing | | 0.8004 | 0.9162 |
| 3323 | Architectural and Structural Metals Manufacturing | X | 0.7529 | 0.9162 |
| 4411 | Automobile Dealers | X | 0.8041 | 0.9158 |
| 4931 | Warehousing and Storage | X | 0.8170 | 0.9156 |
| 6233 | Continuing Care Retirement Communities and Assisted Living Facilities for the Elderly | X | 0.7782 | 0.9155 |
| 4882 | Support Activities for Rail Transportation | X | 0.8521 | 0.9154 |
| 4461 | Health and Personal Care Stores | X | 0.7916 | 0.9153 |
| 6214 | Outpatient Care Centers | X | 0.8526 | 0.9153 |
| 3327 | Machine Shops; Turned Product; and Screw, Nut, and Bolt Manufacturing | X | 0.7724 | 0.9152 |
| 3162 | Footwear Manufacturing | | 0.7639 | 0.9149 |
| 3111 | Animal Food Manufacturing | X | 0.7331 | 0.9147 |
| 3222 | Converted Paper Product Manufacturing | | 0.7620 | 0.9140 |
| 4248 | Beer, Wine, and Distilled Alcoholic Beverage Merchant Wholesalers | X | 0.8416 | 0.9137 |
| 4885 | Freight Transportation Arrangement | X | 0.8249 | 0.9134 |

Table 7: Industries with High Compatibility Index Scores (CI > .80)

| NAICS4 | Description | Existing | DI | CI |
|--------|-----------------------------------------------------------------------------------|----------|--------|--------|
| 6243 | Vocational Rehabilitation Services | X | 0.7361 | 0.9134 |
| 7114 | Agents and Managers for Artists, Athletes, Entertainers, and Other Public Figures | X | 0.8321 | 0.9133 |
| 5242 | Agencies, Brokerages, and Other Insurance Related Activities | X | 0.8400 | 0.9130 |
| 5511 | Management of Companies and Enterprises | X | 0.8803 | 0.9128 |
| 5322 | Consumer Goods Rental | X | 0.8150 | 0.9126 |
| 5615 | Travel Arrangement and Reservation Services | X | 0.8045 | 0.9125 |
| 3133 | Textile and Fabric Finishing and Fabric Coating Mills | X | 0.7367 | 0.9117 |
| 4422 | Home Furnishings Stores | X | 0.8055 | 0.9109 |
| 3344 | Semiconductor and Other Electronic Component Manufacturing | | 0.8591 | 0.9107 |
| 5323 | General Rental Centers | X | 0.7950 | 0.9101 |
| 1111 | Oilseed and Grain Farming | X | 0.8085 | 0.9100 |
| 3339 | Other General Purpose Machinery Manufacturing | X | 0.7905 | 0.9097 |
| 4523 | General Merchandise Stores, including Warehouse Clubs and Supercenters | X | 0.7482 | 0.9085 |
| 2371 | Utility System Construction | X | 0.7865 | 0.9076 |
| 5321 | Automotive Equipment Rental and Leasing | X | 0.8320 | 0.9076 |
| 3256 | Soap, Cleaning Compound, and Toilet Preparation Manufacturing | X | 0.8023 | 0.9075 |
| 3118 | Bakeries and Tortilla Manufacturing | X | 0.7390 | 0.9064 |
| 7131 | Amusement Parks and Arcades | X | 0.7202 | 0.9062 |
| 7225 | Restaurants and Other Eating Places | X | 0.7624 | 0.9057 |
| 5239 | Other Financial Investment Activities | X | 0.8140 | 0.9055 |
| 5221 | Depository Credit Intermediation | X | 0.8103 | 0.9041 |
| 4482 | Shoe Stores | X | 0.7934 | 0.9034 |
| 8133 | Social Advocacy Organizations | X | 0.8227 | 0.9020 |
| 8123 | Drycleaning and Laundry Services | X | 0.7695 | 0.9012 |
| 4451 | Grocery Stores | X | 0.7770 | 0.9011 |
| 4869 | Other Pipeline Transportation | X | 0.9738 | 0.9001 |
| 6112 | Junior Colleges | X | 0.8108 | 0.8981 |
| 2122 | Metal Ore Mining | | 0.7869 | 0.8919 |
| 4483 | Jewelry, Luggage, and Leather Goods Stores | X | 0.7491 | 0.8876 |
| 4889 | Other Support Activities for Transportation | X | 0.8053 | 0.8813 |

Table 8: Compatibility Index and Desirability Index Scores - All Industries

| NAICS4 | Description | Existing | DI | CI |
|--------|-----------------------------------------------------------------|----------|--------|--------|
| 1111 | Oilseed and Grain Farming | X | 0.8085 | 0.9100 |
| 1112 | Vegetable and Melon Farming | X | 0.7960 | 0.9248 |
| 1113 | Fruit and Tree Nut Farming | X | 0.8020 | 0.9388 |
| 1114 | Greenhouse, Nursery, and Floriculture Production | X | 0.7362 | 0.9220 |
| 1119 | Other Crop Farming | X | 0.6850 | 0.9360 |
| 1121 | Cattle Ranching and Farming | X | 0.7432 | 0.9253 |
| 1122 | Hog and Pig Farming | X | 0.7776 | 0.9588 |
| 1124 | Sheep and Goat Farming | X | 0.7544 | 0.9367 |
| 1125 | Aquaculture | X | 0.7511 | 0.9299 |
| 1129 | Other Animal Production | X | 0.7548 | 0.9354 |
| 1131 | Timber Tract Operations | X | 0.8455 | 0.9245 |
| 1132 | Forest Nurseries and Gathering of Forest Products | X | 0.7610 | 0.9338 |
| 1133 | Logging | X | 0.8055 | 0.9221 |
| 1141 | Fishing | | 0.7965 | 0.9313 |
| 1142 | Hunting and Trapping | X | 0.7494 | 0.9319 |
| 1151 | Support Activities for Crop Production | X | 0.7345 | 0.9289 |
| 1152 | Support Activities for Animal Production | X | 0.7450 | 0.9386 |
| 1153 | Support Activities for Forestry | X | 0.7579 | 0.9359 |
| 2111 | Oil and Gas Extraction | X | 0.8024 | 0.9372 |
| 2121 | Coal Mining | | 0.8465 | 0.9570 |
| 2122 | Metal Ore Mining | | 0.7869 | 0.8919 |
| 2123 | Nonmetallic Mineral Mining and Quarrying | X | 0.7874 | 0.9271 |
| 2131 | Support Activities for Mining | X | 0.8174 | 0.9474 |
| 2211 | Electric Power Generation, Transmission and Distribution | X | 0.8355 | 0.9239 |
| 2212 | Natural Gas Distribution | X | 0.8814 | 0.9392 |
| 2213 | Water, Sewage and Other Systems | X | 0.7393 | 0.9211 |
| 2361 | Residential Building Construction | X | 0.7976 | 0.9380 |
| 2362 | Nonresidential Building Construction | X | 0.7760 | 0.9223 |
| 2371 | Utility System Construction | X | 0.7865 | 0.9076 |
| 2372 | Land Subdivision | X | 0.7805 | 0.9325 |
| 2373 | Highway, Street, and Bridge Construction | X | 0.7595 | 0.9224 |
| 2379 | Other Heavy and Civil Engineering Construction | X | 0.7391 | 0.9425 |
| 2381 | Foundation, Structure, and Building Exterior Contractors | X | 0.7778 | 0.9287 |
| 2382 | Building Equipment Contractors | X | 0.8121 | 0.9280 |
| 2383 | Building Finishing Contractors | X | 0.8142 | 0.9216 |
| 2389 | Other Specialty Trade Contractors | X | 0.7449 | 0.9182 |
| 3111 | Animal Food Manufacturing | X | 0.7331 | 0.9147 |
| 3112 | Grain and Oilseed Milling | | 0.8034 | 0.9324 |
| 3113 | Sugar and Confectionery Product Manufacturing | X | 0.7935 | 0.9289 |
| 3114 | Fruit and Vegetable Preserving and Specialty Food Manufacturing | X | 0.7331 | 0.9172 |
| 3115 | Dairy Product Manufacturing | | 0.7796 | 0.9231 |
| 3116 | Animal Slaughtering and Processing | X | 0.7585 | 0.9375 |
| 3117 | Seafood Product Preparation and Packaging | | 0.7562 | 0.9207 |
| 3118 | Bakeries and Tortilla Manufacturing | X | 0.7390 | 0.9064 |
| 3119 | Other Food Manufacturing | X | 0.7730 | 0.9304 |
| 3121 | Beverage Manufacturing | X | 0.7534 | 0.9334 |
| 3122 | Tobacco Manufacturing | | 0.8092 | 0.9273 |
| 3131 | Fiber, Yarn, and Thread Mills | | 0.7301 | 0.9352 |
| 3132 | Fabric Mills | | 0.7277 | 0.9285 |

Table 8: Compatibility Index and Desirability Index Scores - All Industries

| NAICS4 | Description | Existing | DI | CI |
|--------|---------------------------------------------------------------------------------------------|----------|--------|--------|
| 3133 | Textile and Fabric Finishing and Fabric Coating Mills | X | 0.7367 | 0.9117 |
| 3141 | Textile Furnishings Mills | X | 0.7024 | 0.9185 |
| 3149 | Other Textile Product Mills | X | 0.7297 | 0.9579 |
| 3151 | Apparel Knitting Mills | X | 0.6743 | 0.9318 |
| 3152 | Cut and Sew Apparel Manufacturing | X | 0.7157 | 0.9199 |
| 3159 | Apparel Accessories and Other Apparel Manufacturing | X | 0.7219 | 0.9290 |
| 3161 | Leather and Hide Tanning and Finishing | | 0.7246 | 0.9242 |
| 3162 | Footwear Manufacturing | | 0.7639 | 0.9149 |
| 3169 | Other Leather and Allied Product Manufacturing | X | 0.7345 | 0.9204 |
| 3211 | Sawmills and Wood Preservation | X | 0.7862 | 0.9279 |
| 3212 | Veneer, Plywood, and Engineered Wood Product Manufacturing | X | 0.7725 | 0.9346 |
| 3219 | Other Wood Product Manufacturing | X | 0.7691 | 0.9309 |
| 3221 | Pulp, Paper, and Paperboard Mills | X | 0.7577 | 0.9189 |
| 3222 | Converted Paper Product Manufacturing | | 0.7620 | 0.9140 |
| 3231 | Printing and Related Support Activities | X | 0.7565 | 0.9393 |
| 3241 | Petroleum and Coal Products Manufacturing | X | 0.8499 | 0.9217 |
| 3251 | Basic Chemical Manufacturing | X | 0.8062 | 0.9170 |
| 3252 | Resin, Synthetic Rubber, and Artificial and Synthetic Fibers and Filaments Manufacturing | X | 0.7871 | 0.9213 |
| 3253 | Pesticide, Fertilizer, and Other Agricultural Chemical Manufacturing | | 0.8004 | 0.9162 |
| 3254 | Pharmaceutical and Medicine Manufacturing | X | 0.8062 | 0.9355 |
| 3255 | Paint, Coating, and Adhesive Manufacturing | | 0.7932 | 0.9264 |
| 3256 | Soap, Cleaning Compound, and Toilet Preparation Manufacturing | X | 0.8023 | 0.9075 |
| 3259 | Other Chemical Product and Preparation Manufacturing | | 0.8044 | 0.9324 |
| 3261 | Plastics Product Manufacturing | X | 0.7391 | 0.9495 |
| 3262 | Rubber Product Manufacturing | | 0.7585 | 0.9176 |
| 3271 | Clay Product and Refractory Manufacturing | X | 0.7810 | 0.9340 |
| 3272 | Glass and Glass Product Manufacturing | X | 0.7767 | 0.9321 |
| 3273 | Cement and Concrete Product Manufacturing | | 0.8206 | 0.9173 |
| 3274 | Lime and Gypsum Product Manufacturing | | 0.8068 | 0.9174 |
| 3279 | Other Nonmetallic Mineral Product Manufacturing | X | 0.7884 | 0.9264 |
| 3311 | Iron and Steel Mills and Ferroalloy Manufacturing | | 0.8009 | 0.9286 |
| 3312 | Steel Product Manufacturing from Purchased Steel | | 0.7575 | 0.9249 |
| 3313 | Alumina and Aluminum Production and Processing | | 0.7841 | 0.9163 |
| 3314 | Nonferrous Metal (except Aluminum) Production and Processing | X | 0.7747 | 0.9255 |
| 3315 | Foundries | | 0.7871 | 0.9260 |
| 3321 | Forging and Stamping | | 0.7648 | 0.9207 |
| 3322 | Cutlery and Handtool Manufacturing | X | 0.7658 | 0.9228 |
| 3323 | Architectural and Structural Metals Manufacturing | X | 0.7529 | 0.9162 |
| 3324 | Boiler, Tank, and Shipping Container Manufacturing | | 0.7510 | 0.9319 |
| 3325 | Hardware Manufacturing | X | 0.7625 | 0.9274 |
| 3326 | Spring and Wire Product Manufacturing | | 0.7468 | 0.9199 |
| 3327 | Machine Shops; Turned Product; and Screw, Nut, and Bolt Manufacturing | X | 0.7724 | 0.9152 |
| 3328 | Coating, Engraving, Heat Treating, and Allied Activities | X | 0.7743 | 0.9245 |
| 3329 | Other Fabricated Metal Product Manufacturing | X | 0.7544 | 0.9223 |
| 3331 | Agriculture, Construction, and Mining Machinery Manufacturing | | 0.7666 | 0.9281 |
| 3332 | Industrial Machinery Manufacturing | X | 0.7716 | 0.9271 |
| 3333 | Commercial and Service Industry Machinery Manufacturing | | 0.7897 | 0.9345 |
| 3334 | Ventilation, Heating, Air-Conditioning, and Commercial Refrigeration Equipment Manufacturin | | 0.7576 | 0.9311 |
| 3335 | Metalworking Machinery Manufacturing | | 0.7360 | 0.9290 |

Table 8: Compatibility Index and Desirability Index Scores - All Industries

| NAICS4 | Description | Existing | DI | CI |
|--------|--------------------------------------------------------------------------------|----------|--------|--------|
| 3336 | Engine, Turbine, and Power Transmission Equipment Manufacturing | | 0.7874 | 0.9264 |
| 3339 | Other General Purpose Machinery Manufacturing | X | 0.7905 | 0.9097 |
| 3341 | Computer and Peripheral Equipment Manufacturing | | 0.8378 | 0.9400 |
| 3342 | Communications Equipment Manufacturing | X | 0.8017 | 0.9568 |
| 3343 | Audio and Video Equipment Manufacturing | X | 0.8227 | 0.9293 |
| 3344 | Semiconductor and Other Electronic Component Manufacturing | | 0.8591 | 0.9107 |
| 3345 | Navigational, Measuring, Electromedical, and Control Instruments Manufacturing | X | 0.8212 | 0.9185 |
| 3346 | Manufacturing and Reproducing Magnetic and Optical Media | | 0.8008 | 0.9254 |
| 3351 | Electric Lighting Equipment Manufacturing | X | 0.7773 | 0.9180 |
| 3352 | Household Appliance Manufacturing | | 0.7772 | 0.9252 |
| 3353 | Electrical Equipment Manufacturing | | 0.7977 | 0.9332 |
| 3359 | Other Electrical Equipment and Component Manufacturing | X | 0.7744 | 0.9374 |
| 3361 | Motor Vehicle Manufacturing | | 0.7726 | 0.9239 |
| 3362 | Motor Vehicle Body and Trailer Manufacturing | | 0.7409 | 0.9218 |
| 3363 | Motor Vehicle Parts Manufacturing | X | 0.7350 | 0.9344 |
| 3364 | Aerospace Product and Parts Manufacturing | X | 0.7698 | 0.9300 |
| 3365 | Railroad Rolling Stock Manufacturing | | 0.7597 | 0.9222 |
| 3366 | Ship and Boat Building | | 0.7409 | 0.9247 |
| 3369 | Other Transportation Equipment Manufacturing | | 0.7277 | 0.9319 |
| 3371 | Household and Institutional Furniture and Kitchen Cabinet Manufacturing | X | 0.7634 | 0.9338 |
| 3372 | Office Furniture (including Fixtures) Manufacturing | | 0.7744 | 0.9268 |
| 3379 | Other Furniture Related Product Manufacturing | | 0.7739 | 0.9335 |
| 3391 | Medical Equipment and Supplies Manufacturing | X | 0.8003 | 0.9234 |
| 3399 | Other Miscellaneous Manufacturing | X | 0.7596 | 0.9178 |
| 4231 | Motor Vehicle and Motor Vehicle Parts and Supplies Merchant Wholesalers | X | 0.8144 | 0.9200 |
| 4233 | Lumber and Other Construction Materials Merchant Wholesalers | X | 0.8311 | 0.9215 |
| 4234 | Professional and Commercial Equipment and Supplies Merchant Wholesalers | X | 0.8621 | 0.9285 |
| 4235 | Metal and Mineral (except Petroleum) Merchant Wholesalers | X | 0.8348 | 0.9219 |
| 4236 | Household Appliances and Electrical and Electronic Goods Merchant Wholesalers | X | 0.8538 | 0.9238 |
| 4237 | Hardware, and Plumbing and Heating Equipment and Supplies Merchant Wholesalers | X | 0.8404 | 0.9232 |
| 4238 | Machinery, Equipment, and Supplies Merchant Wholesalers | X | 0.8366 | 0.9213 |
| 4239 | Miscellaneous Durable Goods Merchant Wholesalers | X | 0.8163 | 0.9309 |
| 4241 | Paper and Paper Product Merchant Wholesalers | X | 0.8377 | 0.9254 |
| 4242 | Drugs and Druggists' Sundries Merchant Wholesalers | X | 0.8630 | 0.9264 |
| 4243 | Apparel, Piece Goods, and Notions Merchant Wholesalers | X | 0.8231 | 0.9255 |
| 4244 | Grocery and Related Product Merchant Wholesalers | X | 0.8309 | 0.9294 |
| 4245 | Farm Product Raw Material Merchant Wholesalers | X | 0.8272 | 0.9273 |
| 4246 | Chemical and Allied Products Merchant Wholesalers | X | 0.8358 | 0.9193 |
| 4247 | Petroleum and Petroleum Products Merchant Wholesalers | X | 0.8066 | 0.9425 |
| 4248 | Beer, Wine, and Distilled Alcoholic Beverage Merchant Wholesalers | X | 0.8416 | 0.9137 |
| 4249 | Miscellaneous Nondurable Goods Merchant Wholesalers | X | 0.8296 | 0.9302 |
| 4251 | Wholesale Electronic Markets and Agents and Brokers | X | 0.7793 | 0.9412 |
| 4411 | Automobile Dealers | X | 0.8041 | 0.9158 |
| 4412 | Other Motor Vehicle Dealers | X | 0.8060 | 0.9397 |
| 4421 | Furniture Stores | X | 0.8223 | 0.9173 |
| 4422 | Home Furnishings Stores | X | 0.8055 | 0.9109 |
| 4431 | Electronics and Appliance Stores | X | 0.7848 | 0.9232 |
| 4441 | Building Material and Supplies Dealers | X | 0.7916 | 0.9447 |
| 4442 | Lawn and Garden Equipment and Supplies Stores | X | 0.7689 | 0.9258 |

Table 8: Compatibility Index and Desirability Index Scores - All Industries

| NAICS4 | Description | Existing | DI | CI |
|--------|------------------------------------------------------------------------|----------|--------|--------|
| 4451 | Grocery Stores | X | 0.7770 | 0.9011 |
| 4452 | Specialty Food Stores | X | 0.7779 | 0.9190 |
| 4461 | Health and Personal Care Stores | X | 0.7916 | 0.9153 |
| 4481 | Clothing Stores | X | 0.7784 | 0.9340 |
| 4482 | Shoe Stores | X | 0.7934 | 0.9034 |
| 4483 | Jewelry, Luggage, and Leather Goods Stores | X | 0.7491 | 0.8876 |
| 4511 | Sporting Goods, Hobby, and Musical Instrument Stores | X | 0.7966 | 0.9452 |
| 4512 | Book Stores and News Dealers | X | 0.7971 | 0.9472 |
| 4523 | General Merchandise Stores, including Warehouse Clubs and Supercenters | X | 0.7482 | 0.9085 |
| 4531 | Florists | X | 0.7596 | 0.9425 |
| 4533 | Used Merchandise Stores | X | 0.7860 | 0.9609 |
| 4539 | Other Miscellaneous Store Retailers | X | 0.7491 | 0.9194 |
| 4541 | Electronic Shopping and Mail-Order Houses | X | 0.7956 | 0.9563 |
| 4542 | Vending Machine Operators | X | 0.7842 | 0.9332 |
| 4543 | Direct Selling Establishments | X | 0.7688 | 0.9512 |
| 4811 | Scheduled Air Transportation | X | 0.8603 | 0.9299 |
| 4812 | Nonscheduled Air Transportation | X | 0.8478 | 0.9184 |
| 4821 | Rail Transportation | X | 0.8288 | 0.9221 |
| 4832 | Inland Water Transportation | X | 0.8299 | 0.9388 |
| 4841 | General Freight Trucking | X | 0.8096 | 0.9272 |
| 4851 | Urban Transit Systems | X | 0.7304 | 0.9219 |
| 4852 | Interurban and Rural Bus Transportation | X | 0.7590 | 0.9362 |
| 4853 | Taxi and Limousine Service | X | 0.7537 | 0.9887 |
| 4855 | Charter Bus Industry | X | 0.7340 | 0.9425 |
| 4859 | Other Transit and Ground Passenger Transportation | X | 0.7581 | 0.9312 |
| 4861 | Pipeline Transportation of Crude Oil | X | 0.9766 | 0.9798 |
| 4862 | Pipeline Transportation of Natural Gas | X | 0.9360 | 0.9177 |
| 4869 | Other Pipeline Transportation | X | 0.9738 | 0.9001 |
| 4871 | Scenic and Sightseeing Transportation, Land | X | 0.8277 | 0.9224 |
| 4872 | Scenic and Sightseeing Transportation, Water | X | 0.8414 | 0.9385 |
| 4879 | Scenic and Sightseeing Transportation, Other | X | 0.8347 | 0.9328 |
| 4881 | Support Activities for Air Transportation | X | 0.8120 | 0.9290 |
| 4882 | Support Activities for Rail Transportation | X | 0.8521 | 0.9154 |
| 4883 | Support Activities for Water Transportation | X | 0.8439 | 0.9241 |
| 4885 | Freight Transportation Arrangement | X | 0.8249 | 0.9134 |
| 4889 | Other Support Activities for Transportation | X | 0.8053 | 0.8813 |
| 4921 | Couriers and Express Delivery Services | X | 0.7640 | 0.9413 |
| 4922 | Local Messengers and Local Delivery | X | 0.8008 | 0.9518 |
| 4931 | Warehousing and Storage | X | 0.8170 | 0.9156 |
| 5111 | Newspaper, Periodical, Book, and Directory Publishers | X | 0.8273 | 0.9197 |
| 5112 | Software Publishers | X | 0.8764 | 0.9391 |
| 5121 | Motion Picture and Video Industries | X | 0.8428 | 0.9262 |
| 5122 | Sound Recording Industries | X | 0.7789 | 0.9455 |
| 5151 | Radio and Television Broadcasting | X | 0.8224 | 0.9459 |
| 5152 | Cable and Other Subscription Programming | X | 0.9235 | 0.9348 |
| 5173 | Wired and Wireless Telecommunications Carriers | X | 0.8164 | 0.9276 |
| 5179 | Other Telecommunications | X | 0.8458 | 0.9455 |
| 5182 | Data Processing, Hosting, and Related Services | X | 0.8509 | 0.9474 |
| 5191 | Other Information Services | X | 0.8092 | 0.9402 |

Table 8: Compatibility Index and Desirability Index Scores - All Industries

| NAICS4 | Description | Existing | DI | CI |
|--------|----------------------------------------------------------------------|----------|--------|--------|
| 5221 | Depository Credit Intermediation | X | 0.8103 | 0.9041 |
| 5222 | Nondepository Credit Intermediation | X | 0.8369 | 0.9212 |
| 5223 | Activities Related to Credit Intermediation | X | 0.8426 | 0.9351 |
| 5231 | Securities and Commodity Contracts Intermediation and Brokerage | X | 0.8517 | 0.9294 |
| 5232 | Securities and Commodity Exchanges | X | 0.8487 | 0.9379 |
| 5239 | Other Financial Investment Activities | X | 0.8140 | 0.9055 |
| 5241 | Insurance Carriers | X | 0.8567 | 0.9528 |
| 5242 | Agencies, Brokerages, and Other Insurance Related Activities | X | 0.8400 | 0.9130 |
| 5251 | Insurance and Employee Benefit Funds | X | 0.7983 | 0.9357 |
| 5259 | Other Investment Pools and Funds | X | 0.7950 | 0.9220 |
| 5311 | Lessors of Real Estate | X | 0.7751 | 0.9182 |
| 5312 | Offices of Real Estate Agents and Brokers | X | 0.7649 | 0.9217 |
| 5313 | Activities Related to Real Estate | X | 0.7816 | 0.9396 |
| 5321 | Automotive Equipment Rental and Leasing | X | 0.8320 | 0.9076 |
| 5322 | Consumer Goods Rental | X | 0.8150 | 0.9126 |
| 5323 | General Rental Centers | X | 0.7950 | 0.9101 |
| 5331 | Lessors of Nonfinancial Intangible Assets (except Copyrighted Works) | X | 0.8673 | 0.9283 |
| 5411 | Legal Services | X | 0.8131 | 0.9389 |
| 5412 | Accounting, Tax Preparation, Bookkeeping, and Payroll Services | X | 0.8398 | 0.9503 |
| 5413 | Architectural, Engineering, and Related Services | X | 0.8440 | 0.9209 |
| 5414 | Specialized Design Services | X | 0.8150 | 0.9207 |
| 5415 | Computer Systems Design and Related Services | X | 0.8527 | 0.9263 |
| 5416 | Management, Scientific, and Technical Consulting Services | X | 0.8404 | 0.9312 |
| 5417 | Scientific Research and Development Services | X | 0.8751 | 0.9259 |
| 5418 | Advertising, Public Relations, and Related Services | X | 0.8386 | 0.9299 |
| 5419 | Other Professional, Scientific, and Technical Services | X | 0.8079 | 0.9324 |
| 5511 | Management of Companies and Enterprises | X | 0.8803 | 0.9128 |
| 5611 | Office Administrative Services | X | 0.7736 | 0.9278 |
| 5613 | Employment Services | X | 0.7862 | 0.9425 |
| 5614 | Business Support Services | X | 0.7790 | 0.9303 |
| 5615 | Travel Arrangement and Reservation Services | X | 0.8045 | 0.9125 |
| 5616 | Investigation and Security Services | X | 0.7709 | 0.9321 |
| 5617 | Services to Buildings and Dwellings | X | 0.7694 | 1.0000 |
| 5619 | Other Support Services | X | 0.7833 | 0.9367 |
| 5621 | Waste Collection | X | 0.6453 | 0.9393 |
| 5622 | Waste Treatment and Disposal | X | 0.7877 | 0.9191 |
| 5629 | Remediation and Other Waste Management Services | X | 0.8047 | 0.9220 |
| 6111 | Elementary and Secondary Schools | X | 0.7602 | 0.9285 |
| 6112 | Junior Colleges | X | 0.8108 | 0.8981 |
| 6113 | Colleges, Universities, and Professional Schools | X | 0.8448 | 0.9400 |
| 6114 | Business Schools and Computer and Management Training | X | 0.7717 | 0.9532 |
| 6115 | Technical and Trade Schools | X | 0.7481 | 0.9292 |
| 6116 | Other Schools and Instruction | X | 0.7676 | 0.9445 |
| 6117 | Educational Support Services | X | 0.7640 | 0.9273 |
| 6212 | Offices of Dentists | X | 0.7770 | 0.9256 |
| 6214 | Outpatient Care Centers | X | 0.8526 | 0.9153 |
| 6215 | Medical and Diagnostic Laboratories | X | 0.8320 | 0.9241 |
| 6216 | Home Health Care Services | X | 0.7798 | 0.9290 |
| 6231 | Nursing Care Facilities (Skilled Nursing Facilities) | X | 0.7736 | 0.9474 |

Table 8: Compatibility Index and Desirability Index Scores - All Industries

| NAICS4 | Description | Existing | DI | CI |
|--------|-----------------------------------------------------------------------------------------------|----------|--------|--------|
| 6232 | Residential Intellectual and Developmental Disability, Mental Health, and Substance Abuse Fac | X | 0.7825 | 0.9216 |
| 6233 | Continuing Care Retirement Communities and Assisted Living Facilities for the Elderly | X | 0.7782 | 0.9155 |
| 6239 | Other Residential Care Facilities | X | 0.7749 | 0.9364 |
| 6241 | Individual and Family Services | X | 0.7578 | 0.9420 |
| 6242 | Community Food and Housing, and Emergency and Other Relief Services | X | 0.6698 | 0.9252 |
| 6243 | Vocational Rehabilitation Services | X | 0.7361 | 0.9134 |
| 6244 | Child Day Care Services | X | 0.7785 | 0.9240 |
| 7112 | Spectator Sports | X | 0.7585 | 0.9314 |
| 7113 | Promoters of Performing Arts, Sports, and Similar Events | X | 0.7962 | 0.9235 |
| 7114 | Agents and Managers for Artists, Athletes, Entertainers, and Other Public Figures | X | 0.8321 | 0.9133 |
| 7121 | Museums, Historical Sites, and Similar Institutions | X | 0.7610 | 0.9223 |
| 7131 | Amusement Parks and Arcades | X | 0.7202 | 0.9062 |
| 7139 | Other Amusement and Recreation Industries | X | 0.7745 | 0.9388 |
| 7212 | RV (Recreational Vehicle) Parks and Recreational Camps | X | 0.7926 | 0.9418 |
| 7213 | Rooming and Boarding Houses, Dormitories, and Workers' Camps | X | 0.8137 | 0.9308 |
| 7223 | Special Food Services | X | 0.7800 | 0.9171 |
| 7225 | Restaurants and Other Eating Places | X | 0.7624 | 0.9057 |
| 8112 | Electronic and Precision Equipment Repair and Maintenance | X | 0.7672 | 0.9441 |
| 8113 | Commercial and Industrial Machinery and Equipment (except Automotive and Electronic) Repa | X | 0.7929 | 0.9398 |
| 8114 | Personal and Household Goods Repair and Maintenance | X | 0.7728 | 0.9356 |
| 8121 | Personal Care Services | X | 0.7899 | 0.9273 |
| 8122 | Death Care Services | X | 0.7573 | 0.9308 |
| 8123 | Drycleaning and Laundry Services | X | 0.7695 | 0.9012 |
| 8129 | Other Personal Services | X | 0.7694 | 0.9242 |
| 8131 | Religious Organizations | X | 0.7969 | 0.9806 |
| 8132 | Grantmaking and Giving Services | X | 0.8204 | 0.9524 |
| 8133 | Social Advocacy Organizations | X | 0.8227 | 0.9020 |
| 8134 | Civic and Social Organizations | X | 0.7818 | 0.9811 |
| 8139 | Business, Professional, Labor, Political, and Similar Organizations | X | 0.8165 | 0.9412 |
| 9261 | Administration of Economic Programs | | 0.7240 | 0.9270 |