

Table 1: Rio Arriba County, NM Community Development Goal Rankings

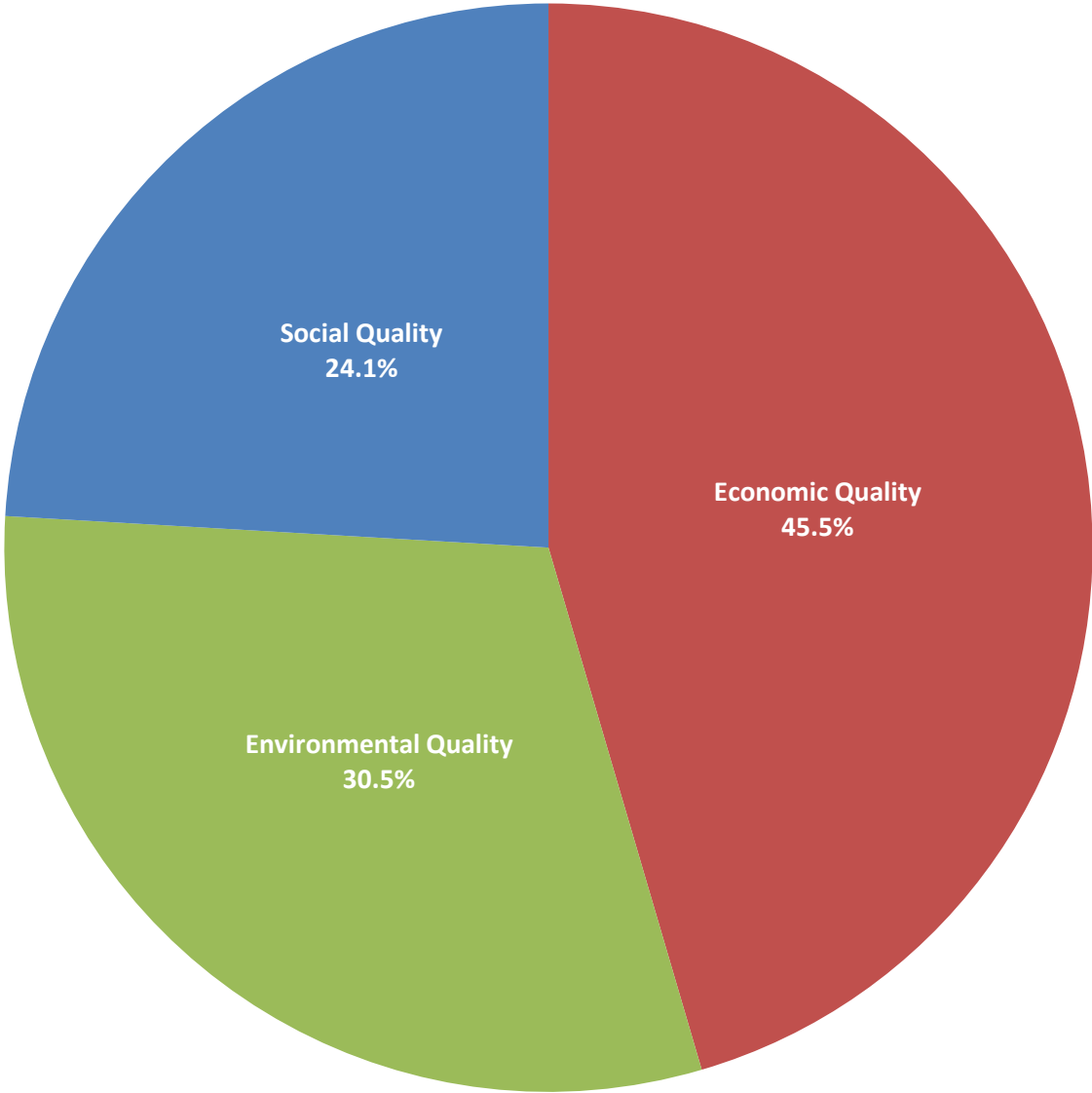
<i>Goal</i>	<i>Weight</i>	<i>Rank</i>
Economic Quality	45.50%	1
Environmental Quality	30.50%	2
Social Quality	24.10%	3

Table 2: Community Development Indicator Rankings

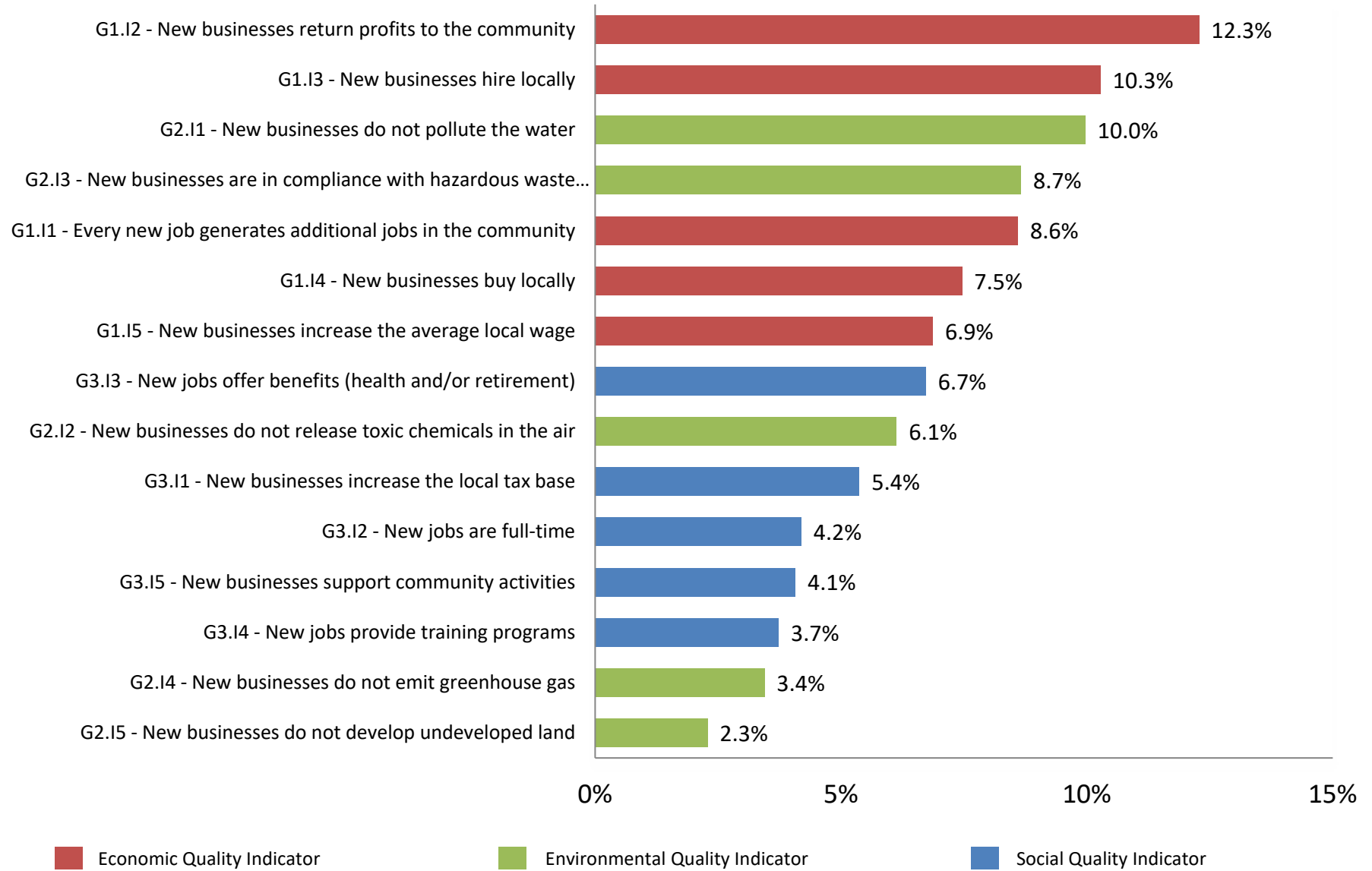
<i>Indicator</i>	<i>Weight</i>	<i>Rank</i>
G1.I1 - Every new job generates additional jobs in the community	8.60%	5
G1.I2 - New businesses return profits to the community	12.29%	1
G1.I3 - New businesses hire locally	10.28%	2
G1.I4 - New businesses buy locally	7.46%	6
G1.I5 - New businesses increase the average local wage	6.87%	7
G2.I1 - New businesses do not pollute the water	9.97%	3
G2.I2 - New businesses do not release toxic chemicals in the air	6.13%	9
G2.I3 - New businesses are in compliance with hazardous waste management	8.66%	4
G2.I4 - New businesses do not emit greenhouse gas	3.45%	14
G2.I5 - New businesses do not develop undeveloped land	2.29%	15
G3.I1 - New businesses increase the local tax base	5.37%	10
G3.I2 - New jobs are full-time	4.19%	11
G3.I3 - New jobs offer benefits (health and/or retirement)	6.72%	8
G3.I4 - New jobs provide training programs	3.74%	13
G3.I5 - New businesses support community activities	4.07%	12

Number of observations	13
------------------------	----

**Figure 1: Community Development Goal Weights:
Rio Arriba County, NM**



**Figure 2: Community Development Indicator Weights:
Rio Arriba County, NM**



**Figure 3: Rio Arriba County, NM ASAP Results
All NAICS**

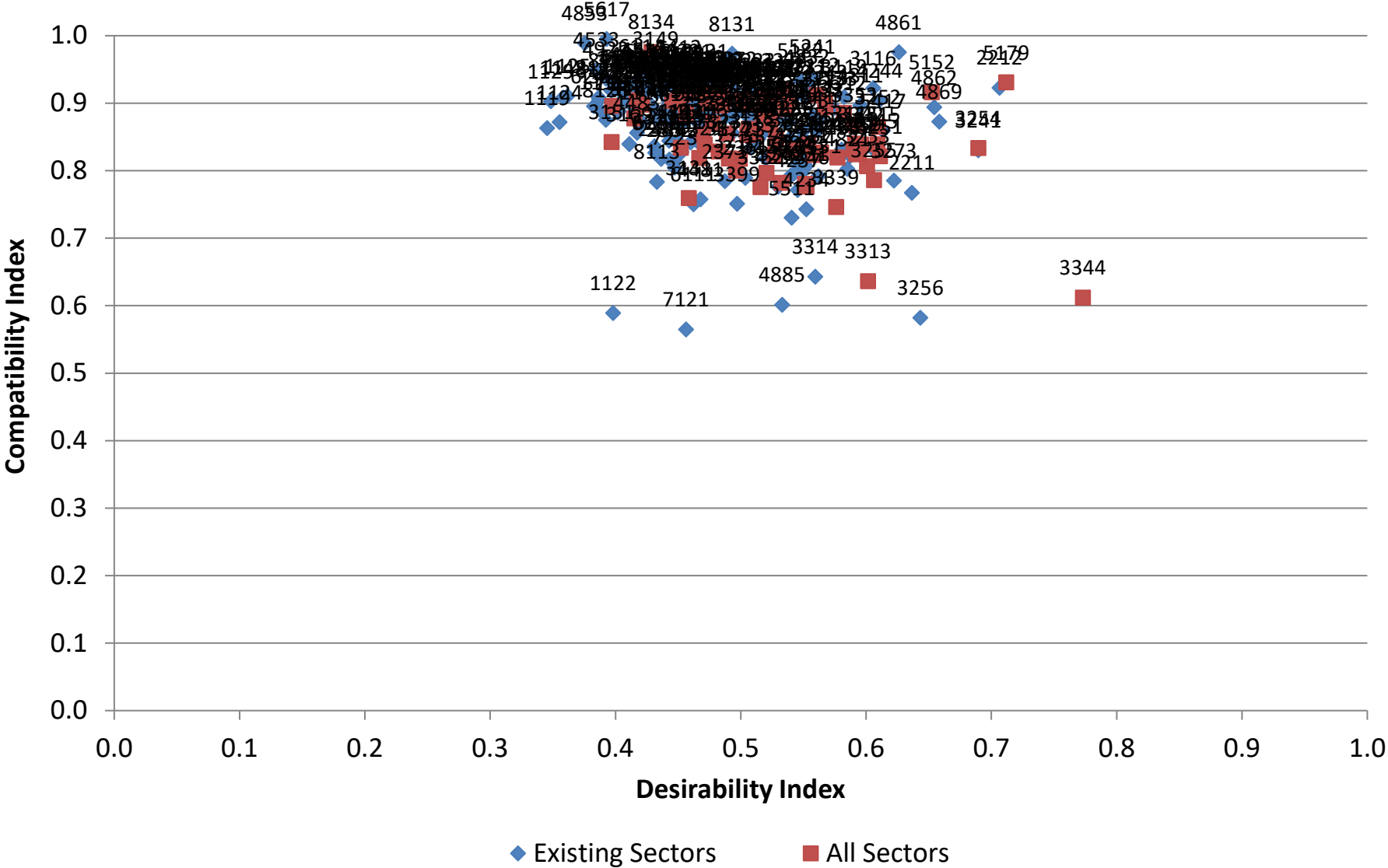


Figure 5: Rio Arriba County, NM ASAP Results
Target NAICS

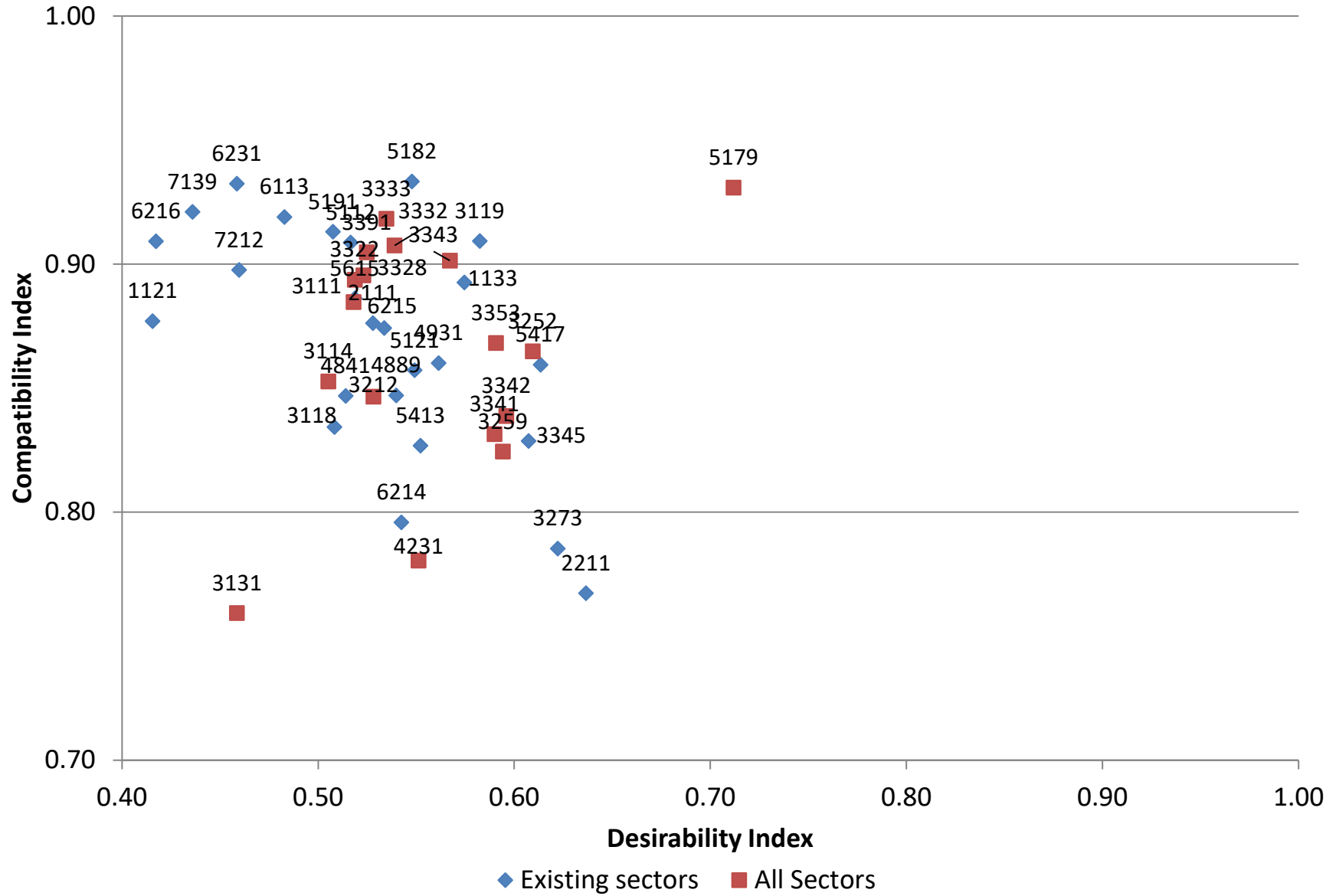


Table 3: Industries with High Desirability and Compatibility Index Scores (Index > .50)

NAICS4	Description	Existing	DI	CI
4861	Pipeline Transportation of Crude Oil	X	0.6262	0.9755
5241	Insurance Carriers	X	0.5573	0.9391
5182	Data Processing, Hosting, and Related Services	X	0.5478	0.9333
5179	Other Telecommunications		0.7119	0.9308
4832	Inland Water Transportation	X	0.5529	0.9246
2212	Natural Gas Distribution	X	0.7064	0.9229
3116	Animal Slaughtering and Processing	X	0.6057	0.9226
5223	Activities Related to Credit Intermediation	X	0.5095	0.9190
3333	Commercial and Service Industry Machinery Manufacturing		0.5348	0.9183
5152	Cable and Other Subscription Programming		0.6525	0.9162
5191	Other Information Services	X	0.5076	0.9130
3112	Grain and Oilseed Milling		0.5607	0.9121
3311	Iron and Steel Mills and Ferroalloy Manufacturing		0.5184	0.9120
5331	Lessors of Nonfinancial Intangible Assets (except Copyrighted Works)	X	0.5263	0.9098
3119	Other Food Manufacturing	X	0.5824	0.9093
5231	Securities and Commodity Contracts Intermediation and Brokerage	X	0.5508	0.9093
5112	Software Publishers	X	0.5166	0.9087
2123	Nonmetallic Mineral Mining and Quarrying	X	0.5244	0.9077
3332	Industrial Machinery Manufacturing		0.5390	0.9075
4247	Petroleum and Petroleum Products Merchant Wholesalers	X	0.5305	0.9071
9261	Administration of Economic Programs		0.5016	0.9062
5173	Wired and Wireless Telecommunications Carriers	X	0.5305	0.9049
3391	Medical Equipment and Supplies Manufacturing		0.5248	0.9047
4244	Grocery and Related Product Merchant Wholesalers	X	0.6109	0.9042
3343	Audio and Video Equipment Manufacturing		0.5672	0.9014
3122	Tobacco Manufacturing		0.5039	0.8989
4811	Scheduled Air Transportation	X	0.5955	0.8969
3328	Coating, Engraving, Heat Treating, and Allied Activities		0.5231	0.8955
4882	Support Activities for Rail Transportation	X	0.5176	0.8948
3113	Sugar and Confectionery Product Manufacturing		0.5676	0.8940
4862	Pipeline Transportation of Natural Gas	X	0.6545	0.8939
3322	Cutlery and Handtool Manufacturing		0.5187	0.8937
1133	Logging	X	0.5746	0.8926
3222	Converted Paper Product Manufacturing		0.5363	0.8911
5615	Travel Arrangement and Reservation Services	X	0.5187	0.8862
3312	Steel Product Manufacturing from Purchased Steel		0.5823	0.8857
3111	Animal Food Manufacturing		0.5180	0.8847
5111	Newspaper, Periodical, Book, and Directory Publishers	X	0.5571	0.8807
5239	Other Financial Investment Activities	X	0.5615	0.8794
4881	Support Activities for Air Transportation	X	0.5338	0.8790
3364	Aerospace Product and Parts Manufacturing	X	0.5193	0.8784
5259	Other Investment Pools and Funds	X	0.5068	0.8778
2111	Oil and Gas Extraction	X	0.5279	0.8762
8133	Social Advocacy Organizations	X	0.5636	0.8751
5221	Depository Credit Intermediation	X	0.5091	0.8750
6215	Medical and Diagnostic Laboratories	X	0.5337	0.8742
4869	Other Pipeline Transportation	X	0.6583	0.8726
4246	Chemical and Allied Products Merchant Wholesalers	X	0.5379	0.8720
3117	Seafood Product Preparation and Packaging		0.5235	0.8700
3353	Electrical Equipment Manufacturing		0.5907	0.8682

Table 3: Industries with High Desirability and Compatibility Index Scores (Index > .50)

NAICS4	Description	Existing	DI	CI
4241	Paper and Paper Product Merchant Wholesalers	X	0.5567	0.8651
3252	Resin, Synthetic Rubber, and Artificial and Synthetic Fibers and Filaments Manufacturing		0.6095	0.8648
2122	Metal Ore Mining		0.5063	0.8618
4931	Warehousing and Storage	X	0.5614	0.8601
5417	Scientific Research and Development Services	X	0.6134	0.8594
5121	Motion Picture and Video Industries	X	0.5492	0.8572
4245	Farm Product Raw Material Merchant Wholesalers	X	0.5177	0.8562
3365	Railroad Rolling Stock Manufacturing		0.5112	0.8549
3114	Fruit and Vegetable Preserving and Specialty Food Manufacturing		0.5052	0.8527
4239	Miscellaneous Durable Goods Merchant Wholesalers	X	0.5116	0.8525
4235	Metal and Mineral (except Petroleum) Merchant Wholesalers	X	0.5394	0.8483
4889	Other Support Activities for Transportation	X	0.5398	0.8471
4841	General Freight Trucking	X	0.5140	0.8469
3212	Veneer, Plywood, and Engineered Wood Product Manufacturing		0.5282	0.8466
3279	Other Nonmetallic Mineral Product Manufacturing	X	0.5084	0.8444
3115	Dairy Product Manufacturing		0.5913	0.8401
3315	Foundries		0.6092	0.8391
3342	Communications Equipment Manufacturing		0.5960	0.8388
3221	Pulp, Paper, and Paperboard Mills		0.5539	0.8386
3118	Bakeries and Tortilla Manufacturing	X	0.5083	0.8343
3254	Pharmaceutical and Medicine Manufacturing		0.6895	0.8335
3341	Computer and Peripheral Equipment Manufacturing		0.5899	0.8314
4248	Beer, Wine, and Distilled Alcoholic Beverage Merchant Wholesalers	X	0.5805	0.8312
4249	Miscellaneous Nondurable Goods Merchant Wholesalers	X	0.5568	0.8312
3336	Engine, Turbine, and Power Transmission Equipment Manufacturing		0.5421	0.8309
3241	Petroleum and Coal Products Manufacturing	X	0.6895	0.8302
3345	Navigational, Measuring, Electromedical, and Control Instruments Manufacturing	X	0.6073	0.8287
2121	Coal Mining		0.5642	0.8269
5413	Architectural, Engineering, and Related Services	X	0.5522	0.8268
4242	Drugs and Druggists' Sundries Merchant Wholesalers		0.5919	0.8249
3259	Other Chemical Product and Preparation Manufacturing		0.5942	0.8244
3325	Hardware Manufacturing		0.5271	0.8237
3361	Motor Vehicle Manufacturing		0.5578	0.8233
4812	Nonscheduled Air Transportation	X	0.5875	0.8216
3251	Basic Chemical Manufacturing		0.6110	0.8214
4236	Household Appliances and Electrical and Electronic Goods Merchant Wholesalers		0.5771	0.8196
2372	Land Subdivision	X	0.5200	0.8176
5415	Computer Systems Design and Related Services	X	0.5514	0.8158
4233	Lumber and Other Construction Materials Merchant Wholesalers	X	0.5453	0.8082
3211	Sawmills and Wood Preservation	X	0.5520	0.8066
3253	Pesticide, Fertilizer, and Other Agricultural Chemical Manufacturing		0.6007	0.8065
4821	Rail Transportation	X	0.5851	0.8027
4243	Apparel, Piece Goods, and Notions Merchant Wholesalers	X	0.5487	0.7971
3274	Lime and Gypsum Product Manufacturing		0.5205	0.7968
6214	Outpatient Care Centers	X	0.5425	0.7959
5418	Advertising, Public Relations, and Related Services	X	0.5395	0.7921
3159	Apparel Accessories and Other Apparel Manufacturing	X	0.5197	0.7920
3331	Agriculture, Construction, and Mining Machinery Manufacturing	X	0.5620	0.7918
2361	Residential Building Construction	X	0.5036	0.7894
3255	Paint, Coating, and Adhesive Manufacturing		0.6063	0.7860

Table 3: Industries with High Desirability and Compatibility Index Scores (Index > .50)

NAICS4	Description	Existing	DI	CI
3273	Cement and Concrete Product Manufacturing	X	0.6222	0.7853
3363	Motor Vehicle Parts Manufacturing		0.5325	0.7820
4231	Motor Vehicle and Motor Vehicle Parts and Supplies Merchant Wholesalers		0.5512	0.7805
3346	Manufacturing and Reproducing Magnetic and Optical Media		0.5525	0.7763
4238	Machinery, Equipment, and Supplies Merchant Wholesalers	X	0.5299	0.7759
3362	Motor Vehicle Body and Trailer Manufacturing		0.5158	0.7757
4237	Hardware, and Plumbing and Heating Equipment and Supplies Merchant Wholesalers	X	0.5454	0.7711
2211	Electric Power Generation, Transmission and Distribution	X	0.6366	0.7673
3339	Other General Purpose Machinery Manufacturing		0.5761	0.7462
4234	Professional and Commercial Equipment and Supplies Merchant Wholesalers	X	0.5523	0.7428
5511	Management of Companies and Enterprises	X	0.5406	0.7303
3314	Nonferrous Metal (except Aluminum) Production and Processing	X	0.5594	0.6431
3313	Alumina and Aluminum Production and Processing		0.6016	0.6363
3344	Semiconductor and Other Electronic Component Manufacturing		0.7730	0.6121
4885	Freight Transportation Arrangement	X	0.5330	0.6013
3256	Soap, Cleaning Compound, and Toilet Preparation Manufacturing	X	0.6433	0.5822

Table 4: Industries with High Desirability and Compatibility Index Scores (Index > .50)

NAICS3	Description	Count
113	Forest and Logging	1
211	Oil and Gas Extraction	1
212	Mining (except Oil and Gas)	3
221	Utilities	2
236	Construction of Buildings	1
237	Heavy and Civil Engineering Construction	1
311	Food Manufacturing	9
312	Beverage and Tobacco Product Manufacturing	1
315	Apparel Manufacturing	1
321	Wood Product Manufacturing	2
322	Paper Manufacturing	1
324	Petroleum and Coal Products Manufacturing	1
325	Chemical Manufacturing	7
327	Nonmetallic Mineral Product Manufacturing	3
331	Primary Metal Manufacturing	5
332	Fabricated Metal Product Manufacturing	3
333	Machinery Manufacturing	5
334	Computer and Electronic Product Manufacturing	6
335	Electrical Equipment, Appliance, and Component Manufacturing	1
336	Transportation Equipment Manufacturing	5
339	Miscellaneous Manufacturing	1
423	Merchant Wholesalers, Durable Goods	8
424	Merchant Wholesalers, Nondurable Goods	9
481	Air Transportation	2
482	Rail Transportation	1
483	Water Transportation	1
484	Truck Transportation	1
486	Pipeline Transportation	3
488	Support Activities for Transportation	4
493	Warehousing and Storage	1
511	Publishing Industries	2
512	Motion Picture and Sound Recording Industries	1
515	Broadcasting	1
517	Telecommunications	2
518	Data Processing, Hosting, and Related Services	1
519	Other Information Services	1
522	Credit Intermediation and Related Activities	2
523	Securities, Commodity Contracts, and Other Financial Investments and Related Activities	2
524	Insurance Carriers and Related Activities	1
525	Funds, Trusts, and Other Financial Vehicles	1
533	Lessors of Nonfinancial Intangible Assets	1
541	Professional, Scientific, and Technical Services	4
551	Management of Companies and Enterprises	1

561	Administrative and Support Services	1
621	the Ambulatory Health Care Services	2
813	Religious, Grantmaking, Civic, Professional, and Similar Organizations	1
926	Administration of Economic Programs	1

Table 5: Rio Arriba County, NM Target Industries

NAICS4	Description	Existing	DI	CI
1121	Cattle Ranching and Farming	X	0.4156	0.8770
1133	Logging	X	0.5746	0.8926
2111	Oil and Gas Extraction	X	0.5279	0.8762
2211	Electric Power Generation, Transmission and Distribution	X	0.6366	0.7673
3111	Animal Food Manufacturing		0.5180	0.8847
3114	Fruit and Vegetable Preserving and Specialty Food Manufacturing		0.5052	0.8527
3118	Bakeries and Tortilla Manufacturing	X	0.5083	0.8343
3119	Other Food Manufacturing	X	0.5824	0.9093
3131	Fiber, Yarn, and Thread Mills		0.4586	0.7593
3212	Veneer, Plywood, and Engineered Wood Product Manufacturing		0.5282	0.8466
3252	Resin, Synthetic Rubber, and Artificial and Synthetic Fibers and Filaments Manufacturing		0.6095	0.8648
3259	Other Chemical Product and Preparation Manufacturing		0.5942	0.8244
3273	Cement and Concrete Product Manufacturing	X	0.6222	0.7853
3322	Cutlery and Handtool Manufacturing		0.5187	0.8937
3328	Coating, Engraving, Heat Treating, and Allied Activities		0.5231	0.8955
3332	Industrial Machinery Manufacturing		0.5390	0.9075
3333	Commercial and Service Industry Machinery Manufacturing		0.5348	0.9183
3341	Computer and Peripheral Equipment Manufacturing		0.5899	0.8314
3342	Communications Equipment Manufacturing		0.5960	0.8388
3343	Audio and Video Equipment Manufacturing		0.5672	0.9014
3345	Navigational, Measuring, Electromedical, and Control Instruments Manufacturing	X	0.6073	0.8287
3353	Electrical Equipment Manufacturing		0.5907	0.8682
3391	Medical Equipment and Supplies Manufacturing		0.5248	0.9047
4231	Motor Vehicle and Motor Vehicle Parts and Supplies Merchant Wholesalers		0.5512	0.7805
4841	General Freight Trucking	X	0.5140	0.8469
4889	Other Support Activities for Transportation	X	0.5398	0.8471
4931	Warehousing and Storage	X	0.5614	0.8601
5112	Software Publishers	X	0.5166	0.9087
5121	Motion Picture and Video Industries	X	0.5492	0.8572
5179	Other Telecommunications		0.7119	0.9308
5182	Data Processing, Hosting, and Related Services	X	0.5478	0.9333
5191	Other Information Services	X	0.5076	0.9130
5413	Architectural, Engineering, and Related Services	X	0.5522	0.8268
5417	Scientific Research and Development Services	X	0.6134	0.8594
5615	Travel Arrangement and Reservation Services	X	0.5187	0.8862
6113	Colleges, Universities, and Professional Schools	X	0.4828	0.9190
6214	Outpatient Care Centers	X	0.5425	0.7959
6215	Medical and Diagnostic Laboratories	X	0.5337	0.8742

Table 6: Industries with High Desirability Index Scores (DI > .50)

NAICS4	Description	Existing	DI	CI
3344	Semiconductor and Other Electronic Component Manufacturing		0.7730	0.6121
5179	Other Telecommunications		0.7119	0.9308
2212	Natural Gas Distribution	X	0.7064	0.9229
3241	Petroleum and Coal Products Manufacturing	X	0.6895	0.8302
3254	Pharmaceutical and Medicine Manufacturing		0.6895	0.8335
4869	Other Pipeline Transportation	X	0.6583	0.8726
4862	Pipeline Transportation of Natural Gas	X	0.6545	0.8939
5152	Cable and Other Subscription Programming		0.6525	0.9162
3256	Soap, Cleaning Compound, and Toilet Preparation Manufacturing	X	0.6433	0.5822
2211	Electric Power Generation, Transmission and Distribution	X	0.6366	0.7673
4861	Pipeline Transportation of Crude Oil	X	0.6262	0.9755
3273	Cement and Concrete Product Manufacturing	X	0.6222	0.7853
5417	Scientific Research and Development Services	X	0.6134	0.8594
3251	Basic Chemical Manufacturing		0.6110	0.8214
4244	Grocery and Related Product Merchant Wholesalers	X	0.6109	0.9042
3252	Resin, Synthetic Rubber, and Artificial and Synthetic Fibers and Filaments Manufacturing		0.6095	0.8648
3315	Foundries		0.6092	0.8391
3345	Navigational, Measuring, Electromedical, and Control Instruments Manufacturing	X	0.6073	0.8287
3255	Paint, Coating, and Adhesive Manufacturing		0.6063	0.7860
3116	Animal Slaughtering and Processing	X	0.6057	0.9226
3313	Alumina and Aluminum Production and Processing		0.6016	0.6363
3253	Pesticide, Fertilizer, and Other Agricultural Chemical Manufacturing		0.6007	0.8065
3342	Communications Equipment Manufacturing		0.5960	0.8388
4811	Scheduled Air Transportation	X	0.5955	0.8969
3259	Other Chemical Product and Preparation Manufacturing		0.5942	0.8244
4242	Drugs and Druggists' Sundries Merchant Wholesalers		0.5919	0.8249
3115	Dairy Product Manufacturing		0.5913	0.8401
3353	Electrical Equipment Manufacturing		0.5907	0.8682
3341	Computer and Peripheral Equipment Manufacturing		0.5899	0.8314
4812	Nonscheduled Air Transportation	X	0.5875	0.8216
4821	Rail Transportation	X	0.5851	0.8027
3119	Other Food Manufacturing	X	0.5824	0.9093
3312	Steel Product Manufacturing from Purchased Steel		0.5823	0.8857
4248	Beer, Wine, and Distilled Alcoholic Beverage Merchant Wholesalers	X	0.5805	0.8312
4236	Household Appliances and Electrical and Electronic Goods Merchant Wholesalers		0.5771	0.8196
3339	Other General Purpose Machinery Manufacturing		0.5761	0.7462
1133	Logging	X	0.5746	0.8926
3113	Sugar and Confectionery Product Manufacturing		0.5676	0.8940
3343	Audio and Video Equipment Manufacturing		0.5672	0.9014
2121	Coal Mining		0.5642	0.8269
8133	Social Advocacy Organizations	X	0.5636	0.8751
3331	Agriculture, Construction, and Mining Machinery Manufacturing	X	0.5620	0.7918
5239	Other Financial Investment Activities	X	0.5615	0.8794
4931	Warehousing and Storage	X	0.5614	0.8601
3112	Grain and Oilseed Milling		0.5607	0.9121
3314	Nonferrous Metal (except Aluminum) Production and Processing	X	0.5594	0.6431
3361	Motor Vehicle Manufacturing		0.5578	0.8233
5241	Insurance Carriers	X	0.5573	0.9391
5111	Newspaper, Periodical, Book, and Directory Publishers	X	0.5571	0.8807

Table 6: Industries with High Desirability Index Scores (DI > .50)

NAICS4	Description	Existing	DI	CI
4249	Miscellaneous Nondurable Goods Merchant Wholesalers	X	0.5568	0.8312
4241	Paper and Paper Product Merchant Wholesalers	X	0.5567	0.8651
3221	Pulp, Paper, and Paperboard Mills		0.5539	0.8386
4832	Inland Water Transportation	X	0.5529	0.9246
3346	Manufacturing and Reproducing Magnetic and Optical Media		0.5525	0.7763
4234	Professional and Commercial Equipment and Supplies Merchant Wholesalers	X	0.5523	0.7428
5413	Architectural, Engineering, and Related Services	X	0.5522	0.8268
3211	Sawmills and Wood Preservation	X	0.5520	0.8066
5415	Computer Systems Design and Related Services	X	0.5514	0.8158
4231	Motor Vehicle and Motor Vehicle Parts and Supplies Merchant Wholesalers		0.5512	0.7805
5231	Securities and Commodity Contracts Intermediation and Brokerage	X	0.5508	0.9093
5121	Motion Picture and Video Industries	X	0.5492	0.8572
4243	Apparel, Piece Goods, and Notions Merchant Wholesalers	X	0.5487	0.7971
5182	Data Processing, Hosting, and Related Services	X	0.5478	0.9333
4237	Hardware, and Plumbing and Heating Equipment and Supplies Merchant Wholesalers	X	0.5454	0.7711
4233	Lumber and Other Construction Materials Merchant Wholesalers	X	0.5453	0.8082
6214	Outpatient Care Centers	X	0.5425	0.7959
3336	Engine, Turbine, and Power Transmission Equipment Manufacturing		0.5421	0.8309
5511	Management of Companies and Enterprises	X	0.5406	0.7303
4889	Other Support Activities for Transportation	X	0.5398	0.8471
5418	Advertising, Public Relations, and Related Services	X	0.5395	0.7921
4235	Metal and Mineral (except Petroleum) Merchant Wholesalers	X	0.5394	0.8483
3332	Industrial Machinery Manufacturing		0.5390	0.9075
4246	Chemical and Allied Products Merchant Wholesalers	X	0.5379	0.8720
3222	Converted Paper Product Manufacturing		0.5363	0.8911
3333	Commercial and Service Industry Machinery Manufacturing		0.5348	0.9183
4881	Support Activities for Air Transportation	X	0.5338	0.8790
6215	Medical and Diagnostic Laboratories	X	0.5337	0.8742
4885	Freight Transportation Arrangement	X	0.5330	0.6013
3363	Motor Vehicle Parts Manufacturing		0.5325	0.7820
4247	Petroleum and Petroleum Products Merchant Wholesalers	X	0.5305	0.9071
5173	Wired and Wireless Telecommunications Carriers	X	0.5305	0.9049
4238	Machinery, Equipment, and Supplies Merchant Wholesalers	X	0.5299	0.7759
3212	Veneer, Plywood, and Engineered Wood Product Manufacturing		0.5282	0.8466
2111	Oil and Gas Extraction	X	0.5279	0.8762
3325	Hardware Manufacturing		0.5271	0.8237
5331	Lessors of Nonfinancial Intangible Assets (except Copyrighted Works)	X	0.5263	0.9098
3391	Medical Equipment and Supplies Manufacturing		0.5248	0.9047
2123	Nonmetallic Mineral Mining and Quarrying	X	0.5244	0.9077
3117	Seafood Product Preparation and Packaging		0.5235	0.8700
3328	Coating, Engraving, Heat Treating, and Allied Activities		0.5231	0.8955
3274	Lime and Gypsum Product Manufacturing		0.5205	0.7968
2372	Land Subdivision	X	0.5200	0.8176
3159	Apparel Accessories and Other Apparel Manufacturing	X	0.5197	0.7920
3364	Aerospace Product and Parts Manufacturing	X	0.5193	0.8784
3322	Cutlery and Handtool Manufacturing		0.5187	0.8937
5615	Travel Arrangement and Reservation Services	X	0.5187	0.8862
3311	Iron and Steel Mills and Ferroalloy Manufacturing		0.5184	0.9120
3111	Animal Food Manufacturing		0.5180	0.8847

Table 6: Industries with High Desirability Index Scores (DI > .50)

NAICS4	Description	Existing	DI	CI
4245	Farm Product Raw Material Merchant Wholesalers	X	0.5177	0.8562
4882	Support Activities for Rail Transportation	X	0.5176	0.8948
5112	Software Publishers	X	0.5166	0.9087
3362	Motor Vehicle Body and Trailer Manufacturing		0.5158	0.7757
4841	General Freight Trucking	X	0.5140	0.8469
4239	Miscellaneous Durable Goods Merchant Wholesalers	X	0.5116	0.8525
3365	Railroad Rolling Stock Manufacturing		0.5112	0.8549
5223	Activities Related to Credit Intermediation	X	0.5095	0.9190
5221	Depository Credit Intermediation	X	0.5091	0.8750
3279	Other Nonmetallic Mineral Product Manufacturing	X	0.5084	0.8444
3118	Bakeries and Tortilla Manufacturing	X	0.5083	0.8343
5191	Other Information Services	X	0.5076	0.9130
5259	Other Investment Pools and Funds	X	0.5068	0.8778
2122	Metal Ore Mining		0.5063	0.8618
3114	Fruit and Vegetable Preserving and Specialty Food Manufacturing		0.5052	0.8527
3122	Tobacco Manufacturing		0.5039	0.8989
2361	Residential Building Construction	X	0.5036	0.7894
9261	Administration of Economic Programs		0.5016	0.9062

Table 7: Industries with High Compatibility Index Scores (CI > .50)

NAICS4	Description	Existing	DI	CI
5617	Services to Buildings and Dwellings	X	0.3930	0.9950
4853	Taxi and Limousine Service	X	0.3755	0.9887
8134	Civic and Social Organizations		0.4287	0.9760
4861	Pipeline Transportation of Crude Oil	X	0.6262	0.9755
8131	Religious Organizations	X	0.4930	0.9732
3149	Other Textile Product Mills		0.4322	0.9509
4533	Used Merchandise Stores	X	0.3849	0.9496
6114	Business Schools and Computer and Management Training	X	0.4207	0.9396
5241	Insurance Carriers	X	0.5573	0.9391
5412	Accounting, Tax Preparation, Bookkeeping, and Payroll Services	X	0.4503	0.9387
4922	Local Messengers and Local Delivery	X	0.3923	0.9363
4512	Book Stores and News Dealers	X	0.4227	0.9344
5182	Data Processing, Hosting, and Related Services	X	0.5478	0.9333
6231	Nursing Care Facilities (Skilled Nursing Facilities)	X	0.4585	0.9324
2131	Support Activities for Mining	X	0.4717	0.9323
6116	Other Schools and Instruction	X	0.4250	0.9323
5179	Other Telecommunications		0.7119	0.9308
4441	Building Material and Supplies Dealers	X	0.4496	0.9297
4855	Charter Bus Industry	X	0.4519	0.9291
5151	Radio and Television Broadcasting	X	0.4538	0.9291
4511	Sporting Goods, Hobby, and Musical Instrument Stores	X	0.4448	0.9286
4921	Couriers and Express Delivery Services	X	0.4143	0.9282
5411	Legal Services	X	0.4644	0.9267
1113	Fruit and Tree Nut Farming	X	0.4253	0.9258
4832	Inland Water Transportation	X	0.5529	0.9246
5621	Waste Collection	X	0.4071	0.9246
1152	Support Activities for Animal Production	X	0.4033	0.9239
4531	Florists	X	0.4055	0.9235
6241	Individual and Family Services	X	0.4182	0.9233
5313	Activities Related to Real Estate	X	0.4687	0.9231
2212	Natural Gas Distribution	X	0.7064	0.9229
3116	Animal Slaughtering and Processing	X	0.6057	0.9226
3231	Printing and Related Support Activities	X	0.4279	0.9223
8132	Grantmaking and Giving Services	X	0.4698	0.9219
5619	Other Support Services	X	0.4617	0.9218
4872	Scenic and Sightseeing Transportation, Water	X	0.4947	0.9214
5122	Sound Recording Industries		0.4840	0.9213
5232	Securities and Commodity Exchanges	X	0.4689	0.9211
7139	Other Amusement and Recreation Industries	X	0.4359	0.9210
4412	Other Motor Vehicle Dealers	X	0.4586	0.9199
4852	Interurban and Rural Bus Transportation	X	0.4356	0.9194
5223	Activities Related to Credit Intermediation	X	0.5095	0.9190
6113	Colleges, Universities, and Professional Schools	X	0.4828	0.9190
1153	Support Activities for Forestry	X	0.4043	0.9187
8112	Electronic and Precision Equipment Repair and Maintenance	X	0.3968	0.9185
3333	Commercial and Service Industry Machinery Manufacturing		0.5348	0.9183
4542	Vending Machine Operators	X	0.4101	0.9180
4543	Direct Selling Establishments	X	0.4362	0.9178
8114	Personal and Household Goods Repair and Maintenance	X	0.4164	0.9176

Table 7: Industries with High Compatibility Index Scores (CI > .50)

NAICS4	Description	Existing	DI	CI
2379	Other Heavy and Civil Engineering Construction	X	0.4516	0.9163
5616	Investigation and Security Services	X	0.4331	0.9163
5152	Cable and Other Subscription Programming		0.6525	0.9162
4251	Wholesale Electronic Markets and Agents and Brokers		0.4715	0.9160
8139	Business, Professional, Labor, Political, and Similar Organizations	X	0.4796	0.9156
3369	Other Transportation Equipment Manufacturing		0.4615	0.9150
3121	Beverage Manufacturing	X	0.4502	0.9143
5191	Other Information Services	X	0.5076	0.9130
3272	Glass and Glass Product Manufacturing		0.4531	0.9126
3112	Grain and Oilseed Milling		0.5607	0.9121
3311	Iron and Steel Mills and Ferroalloy Manufacturing		0.5184	0.9120
7112	Spectator Sports	X	0.4219	0.9120
3334	Ventilation, Heating, Air-Conditioning, and Commercial Refrigeration Equipment Manufacturin		0.4823	0.9118
6115	Technical and Trade Schools	X	0.4077	0.9115
1125	Aquaculture	X	0.3618	0.9107
5331	Lessors of Nonfinancial Intangible Assets (except Copyrighted Works)	X	0.5263	0.9098
3119	Other Food Manufacturing	X	0.5824	0.9093
5231	Securities and Commodity Contracts Intermediation and Brokerage	X	0.5508	0.9093
6216	Home Health Care Services	X	0.4173	0.9092
5112	Software Publishers	X	0.5166	0.9087
8121	Personal Care Services	X	0.3866	0.9085
1142	Hunting and Trapping	X	0.3582	0.9084
4879	Scenic and Sightseeing Transportation, Other	X	0.4826	0.9080
2123	Nonmetallic Mineral Mining and Quarrying	X	0.5244	0.9077
3332	Industrial Machinery Manufacturing		0.5390	0.9075
3352	Household Appliance Manufacturing		0.4865	0.9073
3261	Plastics Product Manufacturing	X	0.4458	0.9072
4247	Petroleum and Petroleum Products Merchant Wholesalers	X	0.5305	0.9071
1131	Timber Tract Operations	X	0.4986	0.9069
9261	Administration of Economic Programs		0.5016	0.9062
2382	Building Equipment Contractors	X	0.4597	0.9058
8122	Death Care Services	X	0.3869	0.9056
3359	Other Electrical Equipment and Component Manufacturing	X	0.4729	0.9054
5419	Other Professional, Scientific, and Technical Services	X	0.4766	0.9053
5173	Wired and Wireless Telecommunications Carriers	X	0.5305	0.9049
3391	Medical Equipment and Supplies Manufacturing		0.5248	0.9047
3161	Leather and Hide Tanning and Finishing		0.4168	0.9044
4244	Grocery and Related Product Merchant Wholesalers	X	0.6109	0.9042
2381	Foundation, Structure, and Building Exterior Contractors	X	0.4643	0.9038
8129	Other Personal Services	X	0.4049	0.9037
5251	Insurance and Employee Benefit Funds	X	0.4827	0.9036
7113	Promoters of Performing Arts, Sports, and Similar Events		0.4452	0.9034
2373	Highway, Street, and Bridge Construction	X	0.4424	0.9033
1129	Other Animal Production	X	0.3484	0.9030
5629	Remediation and Other Waste Management Services	X	0.4914	0.9027
5614	Business Support Services	X	0.4595	0.9023
5222	Nondepository Credit Intermediation	X	0.4942	0.9021
3372	Office Furniture (including Fixtures) Manufacturing		0.4503	0.9015
3132	Fabric Mills	X	0.4130	0.9014

Table 7: Industries with High Compatibility Index Scores (CI > .50)

NAICS4	Description	Existing	DI	CI
3343	Audio and Video Equipment Manufacturing		0.5672	0.9014
4883	Support Activities for Water Transportation	X	0.4600	0.9008
4411	Automobile Dealers	X	0.4759	0.9005
3321	Forging and Stamping		0.4857	0.9002
3366	Ship and Boat Building		0.4724	0.8997
6212	Offices of Dentists	X	0.4516	0.8997
2383	Building Finishing Contractors	X	0.4948	0.8993
6232	Residential Intellectual and Developmental Disability, Mental Health, and Substance Abuse Fac	X	0.4783	0.8993
3122	Tobacco Manufacturing		0.5039	0.8989
4859	Other Transit and Ground Passenger Transportation	X	0.4772	0.8982
3152	Cut and Sew Apparel Manufacturing		0.4213	0.8977
4539	Other Miscellaneous Store Retailers	X	0.4124	0.8976
7212	RV (Recreational Vehicle) Parks and Recreational Camps	X	0.4597	0.8976
4421	Furniture Stores	X	0.4286	0.8975
4811	Scheduled Air Transportation	X	0.5955	0.8969
3262	Rubber Product Manufacturing		0.4835	0.8965
3141	Textile Furnishings Mills		0.3973	0.8959
6242	Community Food and Housing, and Emergency and Other Relief Services	X	0.3828	0.8957
3328	Coating, Engraving, Heat Treating, and Allied Activities		0.5231	0.8955
4882	Support Activities for Rail Transportation	X	0.5176	0.8948
5613	Employment Services	X	0.4415	0.8946
3113	Sugar and Confectionery Product Manufacturing		0.5676	0.8940
4862	Pipeline Transportation of Natural Gas	X	0.6545	0.8939
3322	Cutlery and Handtool Manufacturing		0.5187	0.8937
4851	Urban Transit Systems	X	0.4504	0.8927
1132	Forest Nurseries and Gathering of Forest Products	X	0.4567	0.8926
1133	Logging	X	0.5746	0.8926
4431	Electronics and Appliance Stores	X	0.4960	0.8914
3222	Converted Paper Product Manufacturing		0.5363	0.8911
6243	Vocational Rehabilitation Services	X	0.4789	0.8911
7213	Rooming and Boarding Houses, Dormitories, and Workers' Camps	X	0.4397	0.8909
4422	Home Furnishings Stores	X	0.4323	0.8900
5242	Agencies, Brokerages, and Other Insurance Related Activities	X	0.4923	0.8895
5311	Lessors of Real Estate	X	0.4624	0.8893
7131	Amusement Parks and Arcades	X	0.4028	0.8886
2213	Water, Sewage and Other Systems	X	0.4507	0.8878
1111	Oilseed and Grain Farming	X	0.3895	0.8865
5615	Travel Arrangement and Reservation Services	X	0.5187	0.8862
6233	Continuing Care Retirement Communities and Assisted Living Facilities for the Elderly	X	0.4643	0.8860
1151	Support Activities for Crop Production	X	0.4018	0.8858
3312	Steel Product Manufacturing from Purchased Steel		0.5823	0.8857
7114	Agents and Managers for Artists, Athletes, Entertainers, and Other Public Figures		0.4563	0.8856
3111	Animal Food Manufacturing		0.5180	0.8847
1112	Vegetable and Melon Farming	X	0.4565	0.8836
4523	General Merchandise Stores, including Warehouse Clubs and Supercenters	X	0.4156	0.8829
5323	General Rental Centers	X	0.4509	0.8823
5322	Consumer Goods Rental	X	0.4953	0.8821
5622	Waste Treatment and Disposal	X	0.4708	0.8808
5111	Newspaper, Periodical, Book, and Directory Publishers	X	0.5571	0.8807

Table 7: Industries with High Compatibility Index Scores (CI > .50)

NAICS4	Description	Existing	DI	CI
6244	Child Day Care Services	X	0.4911	0.8805
5321	Automotive Equipment Rental and Leasing	X	0.4882	0.8803
3326	Spring and Wire Product Manufacturing	X	0.4715	0.8800
7225	Restaurants and Other Eating Places	X	0.4534	0.8799
4482	Shoe Stores	X	0.4145	0.8797
5239	Other Financial Investment Activities	X	0.5615	0.8794
4881	Support Activities for Air Transportation	X	0.5338	0.8790
3364	Aerospace Product and Parts Manufacturing	X	0.5193	0.8784
5259	Other Investment Pools and Funds	X	0.5068	0.8778
3162	Footwear Manufacturing		0.4149	0.8775
1121	Cattle Ranching and Farming	X	0.4156	0.8770
4461	Health and Personal Care Stores	X	0.4338	0.8763

Table 8: Compatibility Index and Desirability Index Scores - All Industries

NAICS4	Description	Existing	DI	CI
1111	Oilseed and Grain Farming	X	0.3895	0.8865
1112	Vegetable and Melon Farming	X	0.4565	0.8836
1113	Fruit and Tree Nut Farming	X	0.4253	0.9258
1114	Greenhouse, Nursery, and Floriculture Production	X	0.4213	0.8714
1119	Other Crop Farming	X	0.3454	0.8632
1121	Cattle Ranching and Farming	X	0.4156	0.8770
1122	Hog and Pig Farming	X	0.3981	0.5892
1124	Sheep and Goat Farming	X	0.3554	0.8720
1125	Aquaculture	X	0.3618	0.9107
1129	Other Animal Production	X	0.3484	0.9030
1131	Timber Tract Operations	X	0.4986	0.9069
1132	Forest Nurseries and Gathering of Forest Products	X	0.4567	0.8926
1133	Logging	X	0.5746	0.8926
1141	Fishing		0.4992	0.8176
1142	Hunting and Trapping	X	0.3582	0.9084
1151	Support Activities for Crop Production	X	0.4018	0.8858
1152	Support Activities for Animal Production	X	0.4033	0.9239
1153	Support Activities for Forestry	X	0.4043	0.9187
2111	Oil and Gas Extraction	X	0.5279	0.8762
2121	Coal Mining		0.5642	0.8269
2122	Metal Ore Mining		0.5063	0.8618
2123	Nonmetallic Mineral Mining and Quarrying	X	0.5244	0.9077
2131	Support Activities for Mining	X	0.4717	0.9323
2211	Electric Power Generation, Transmission and Distribution	X	0.6366	0.7673
2212	Natural Gas Distribution	X	0.7064	0.9229
2213	Water, Sewage and Other Systems	X	0.4507	0.8878
2361	Residential Building Construction	X	0.5036	0.7894
2362	Nonresidential Building Construction	X	0.4431	0.8166
2371	Utility System Construction	X	0.4874	0.7845
2372	Land Subdivision	X	0.5200	0.8176
2373	Highway, Street, and Bridge Construction	X	0.4424	0.9033
2379	Other Heavy and Civil Engineering Construction	X	0.4516	0.9163
2381	Foundation, Structure, and Building Exterior Contractors	X	0.4643	0.9038
2382	Building Equipment Contractors	X	0.4597	0.9058
2383	Building Finishing Contractors	X	0.4948	0.8993
2389	Other Specialty Trade Contractors	X	0.4365	0.8172
3111	Animal Food Manufacturing		0.5180	0.8847
3112	Grain and Oilseed Milling		0.5607	0.9121
3113	Sugar and Confectionery Product Manufacturing		0.5676	0.8940
3114	Fruit and Vegetable Preserving and Specialty Food Manufacturing		0.5052	0.8527
3115	Dairy Product Manufacturing		0.5913	0.8401
3116	Animal Slaughtering and Processing	X	0.6057	0.9226
3117	Seafood Product Preparation and Packaging		0.5235	0.8700
3118	Bakeries and Tortilla Manufacturing	X	0.5083	0.8343
3119	Other Food Manufacturing	X	0.5824	0.9093
3121	Beverage Manufacturing	X	0.4502	0.9143
3122	Tobacco Manufacturing		0.5039	0.8989
3131	Fiber, Yarn, and Thread Mills		0.4586	0.7593
3132	Fabric Mills	X	0.4130	0.9014

Table 8: Compatibility Index and Desirability Index Scores - All Industries

NAICS4	Description	Existing	DI	CI
3133	Textile and Fabric Finishing and Fabric Coating Mills		0.4521	0.8339
3141	Textile Furnishings Mills		0.3973	0.8959
3149	Other Textile Product Mills		0.4322	0.9509
3151	Apparel Knitting Mills		0.3970	0.8426
3152	Cut and Sew Apparel Manufacturing		0.4213	0.8977
3159	Apparel Accessories and Other Apparel Manufacturing	X	0.5197	0.7920
3161	Leather and Hide Tanning and Finishing		0.4168	0.9044
3162	Footwear Manufacturing		0.4149	0.8775
3169	Other Leather and Allied Product Manufacturing	X	0.4111	0.8393
3211	Sawmills and Wood Preservation	X	0.5520	0.8066
3212	Veneer, Plywood, and Engineered Wood Product Manufacturing		0.5282	0.8466
3219	Other Wood Product Manufacturing		0.4964	0.8000
3221	Pulp, Paper, and Paperboard Mills		0.5539	0.8386
3222	Converted Paper Product Manufacturing		0.5363	0.8911
3231	Printing and Related Support Activities	X	0.4279	0.9223
3241	Petroleum and Coal Products Manufacturing	X	0.6895	0.8302
3251	Basic Chemical Manufacturing		0.6110	0.8214
3252	Resin, Synthetic Rubber, and Artificial and Synthetic Fibers and Filaments Manufacturing		0.6095	0.8648
3253	Pesticide, Fertilizer, and Other Agricultural Chemical Manufacturing		0.6007	0.8065
3254	Pharmaceutical and Medicine Manufacturing		0.6895	0.8335
3255	Paint, Coating, and Adhesive Manufacturing		0.6063	0.7860
3256	Soap, Cleaning Compound, and Toilet Preparation Manufacturing	X	0.6433	0.5822
3259	Other Chemical Product and Preparation Manufacturing		0.5942	0.8244
3261	Plastics Product Manufacturing	X	0.4458	0.9072
3262	Rubber Product Manufacturing		0.4835	0.8965
3271	Clay Product and Refractory Manufacturing	X	0.4599	0.8418
3272	Glass and Glass Product Manufacturing		0.4531	0.9126
3273	Cement and Concrete Product Manufacturing	X	0.6222	0.7853
3274	Lime and Gypsum Product Manufacturing		0.5205	0.7968
3279	Other Nonmetallic Mineral Product Manufacturing	X	0.5084	0.8444
3311	Iron and Steel Mills and Ferroalloy Manufacturing		0.5184	0.9120
3312	Steel Product Manufacturing from Purchased Steel		0.5823	0.8857
3313	Alumina and Aluminum Production and Processing		0.6016	0.6363
3314	Nonferrous Metal (except Aluminum) Production and Processing	X	0.5594	0.6431
3315	Foundries		0.6092	0.8391
3321	Forging and Stamping		0.4857	0.9002
3322	Cutlery and Handtool Manufacturing		0.5187	0.8937
3323	Architectural and Structural Metals Manufacturing		0.4824	0.8284
3324	Boiler, Tank, and Shipping Container Manufacturing		0.4669	0.8187
3325	Hardware Manufacturing		0.5271	0.8237
3326	Spring and Wire Product Manufacturing	X	0.4715	0.8800
3327	Machine Shops; Turned Product; and Screw, Nut, and Bolt Manufacturing		0.4905	0.8180
3328	Coating, Engraving, Heat Treating, and Allied Activities		0.5231	0.8955
3329	Other Fabricated Metal Product Manufacturing		0.4699	0.8537
3331	Agriculture, Construction, and Mining Machinery Manufacturing	X	0.5620	0.7918
3332	Industrial Machinery Manufacturing		0.5390	0.9075
3333	Commercial and Service Industry Machinery Manufacturing		0.5348	0.9183
3334	Ventilation, Heating, Air-Conditioning, and Commercial Refrigeration Equipment Manufacturin		0.4823	0.9118
3335	Metalworking Machinery Manufacturing		0.4889	0.8549

Table 8: Compatibility Index and Desirability Index Scores - All Industries

NAICS4	Description	Existing	DI	CI
3336	Engine, Turbine, and Power Transmission Equipment Manufacturing		0.5421	0.8309
3339	Other General Purpose Machinery Manufacturing		0.5761	0.7462
3341	Computer and Peripheral Equipment Manufacturing		0.5899	0.8314
3342	Communications Equipment Manufacturing		0.5960	0.8388
3343	Audio and Video Equipment Manufacturing		0.5672	0.9014
3344	Semiconductor and Other Electronic Component Manufacturing		0.7730	0.6121
3345	Navigational, Measuring, Electromedical, and Control Instruments Manufacturing	X	0.6073	0.8287
3346	Manufacturing and Reproducing Magnetic and Optical Media		0.5525	0.7763
3351	Electric Lighting Equipment Manufacturing		0.4776	0.8705
3352	Household Appliance Manufacturing		0.4865	0.9073
3353	Electrical Equipment Manufacturing		0.5907	0.8682
3359	Other Electrical Equipment and Component Manufacturing	X	0.4729	0.9054
3361	Motor Vehicle Manufacturing		0.5578	0.8233
3362	Motor Vehicle Body and Trailer Manufacturing		0.5158	0.7757
3363	Motor Vehicle Parts Manufacturing		0.5325	0.7820
3364	Aerospace Product and Parts Manufacturing	X	0.5193	0.8784
3365	Railroad Rolling Stock Manufacturing		0.5112	0.8549
3366	Ship and Boat Building		0.4724	0.8997
3369	Other Transportation Equipment Manufacturing		0.4615	0.9150
3371	Household and Institutional Furniture and Kitchen Cabinet Manufacturing	X	0.4311	0.8363
3372	Office Furniture (including Fixtures) Manufacturing		0.4503	0.9015
3379	Other Furniture Related Product Manufacturing		0.4713	0.8386
3391	Medical Equipment and Supplies Manufacturing		0.5248	0.9047
3399	Other Miscellaneous Manufacturing	X	0.4970	0.7511
4231	Motor Vehicle and Motor Vehicle Parts and Supplies Merchant Wholesalers		0.5512	0.7805
4233	Lumber and Other Construction Materials Merchant Wholesalers	X	0.5453	0.8082
4234	Professional and Commercial Equipment and Supplies Merchant Wholesalers	X	0.5523	0.7428
4235	Metal and Mineral (except Petroleum) Merchant Wholesalers	X	0.5394	0.8483
4236	Household Appliances and Electrical and Electronic Goods Merchant Wholesalers		0.5771	0.8196
4237	Hardware, and Plumbing and Heating Equipment and Supplies Merchant Wholesalers	X	0.5454	0.7711
4238	Machinery, Equipment, and Supplies Merchant Wholesalers	X	0.5299	0.7759
4239	Miscellaneous Durable Goods Merchant Wholesalers	X	0.5116	0.8525
4241	Paper and Paper Product Merchant Wholesalers	X	0.5567	0.8651
4242	Drugs and Druggists' Sundries Merchant Wholesalers		0.5919	0.8249
4243	Apparel, Piece Goods, and Notions Merchant Wholesalers	X	0.5487	0.7971
4244	Grocery and Related Product Merchant Wholesalers	X	0.6109	0.9042
4245	Farm Product Raw Material Merchant Wholesalers	X	0.5177	0.8562
4246	Chemical and Allied Products Merchant Wholesalers	X	0.5379	0.8720
4247	Petroleum and Petroleum Products Merchant Wholesalers	X	0.5305	0.9071
4248	Beer, Wine, and Distilled Alcoholic Beverage Merchant Wholesalers	X	0.5805	0.8312
4249	Miscellaneous Nondurable Goods Merchant Wholesalers	X	0.5568	0.8312
4251	Wholesale Electronic Markets and Agents and Brokers		0.4715	0.9160
4411	Automobile Dealers	X	0.4759	0.9005
4412	Other Motor Vehicle Dealers	X	0.4586	0.9199
4421	Furniture Stores	X	0.4286	0.8975
4422	Home Furnishings Stores	X	0.4323	0.8900
4431	Electronics and Appliance Stores	X	0.4960	0.8914
4441	Building Material and Supplies Dealers	X	0.4496	0.9297
4442	Lawn and Garden Equipment and Supplies Stores	X	0.4472	0.8162

Table 8: Compatibility Index and Desirability Index Scores - All Industries

NAICS4	Description	Existing	DI	CI
4451	Grocery Stores	X	0.4441	0.8743
4452	Specialty Food Stores	X	0.4500	0.8432
4461	Health and Personal Care Stores	X	0.4338	0.8763
4481	Clothing Stores	X	0.4678	0.7575
4482	Shoe Stores	X	0.4145	0.8797
4483	Jewelry, Luggage, and Leather Goods Stores	X	0.4172	0.8561
4511	Sporting Goods, Hobby, and Musical Instrument Stores	X	0.4448	0.9286
4512	Book Stores and News Dealers	X	0.4227	0.9344
4523	General Merchandise Stores, including Warehouse Clubs and Supercenters	X	0.4156	0.8829
4531	Florists	X	0.4055	0.9235
4533	Used Merchandise Stores	X	0.3849	0.9496
4539	Other Miscellaneous Store Retailers	X	0.4124	0.8976
4541	Electronic Shopping and Mail-Order Houses	X	0.4648	0.8442
4542	Vending Machine Operators	X	0.4101	0.9180
4543	Direct Selling Establishments	X	0.4362	0.9178
4811	Scheduled Air Transportation	X	0.5955	0.8969
4812	Nonscheduled Air Transportation	X	0.5875	0.8216
4821	Rail Transportation	X	0.5851	0.8027
4832	Inland Water Transportation	X	0.5529	0.9246
4841	General Freight Trucking	X	0.5140	0.8469
4851	Urban Transit Systems	X	0.4504	0.8927
4852	Interurban and Rural Bus Transportation	X	0.4356	0.9194
4853	Taxi and Limousine Service	X	0.3755	0.9887
4855	Charter Bus Industry	X	0.4519	0.9291
4859	Other Transit and Ground Passenger Transportation	X	0.4772	0.8982
4861	Pipeline Transportation of Crude Oil	X	0.6262	0.9755
4862	Pipeline Transportation of Natural Gas	X	0.6545	0.8939
4869	Other Pipeline Transportation	X	0.6583	0.8726
4871	Scenic and Sightseeing Transportation, Land	X	0.4738	0.8673
4872	Scenic and Sightseeing Transportation, Water	X	0.4947	0.9214
4879	Scenic and Sightseeing Transportation, Other	X	0.4826	0.9080
4881	Support Activities for Air Transportation	X	0.5338	0.8790
4882	Support Activities for Rail Transportation	X	0.5176	0.8948
4883	Support Activities for Water Transportation	X	0.4600	0.9008
4885	Freight Transportation Arrangement	X	0.5330	0.6013
4889	Other Support Activities for Transportation	X	0.5398	0.8471
4921	Couriers and Express Delivery Services	X	0.4143	0.9282
4922	Local Messengers and Local Delivery	X	0.3923	0.9363
4931	Warehousing and Storage	X	0.5614	0.8601
5111	Newspaper, Periodical, Book, and Directory Publishers	X	0.5571	0.8807
5112	Software Publishers	X	0.5166	0.9087
5121	Motion Picture and Video Industries	X	0.5492	0.8572
5122	Sound Recording Industries		0.4840	0.9213
5151	Radio and Television Broadcasting	X	0.4538	0.9291
5152	Cable and Other Subscription Programming		0.6525	0.9162
5173	Wired and Wireless Telecommunications Carriers	X	0.5305	0.9049
5179	Other Telecommunications		0.7119	0.9308
5182	Data Processing, Hosting, and Related Services	X	0.5478	0.9333
5191	Other Information Services	X	0.5076	0.9130

Table 8: Compatibility Index and Desirability Index Scores - All Industries

NAICS4	Description	Existing	DI	CI
5221	Depository Credit Intermediation	X	0.5091	0.8750
5222	Nondepository Credit Intermediation	X	0.4942	0.9021
5223	Activities Related to Credit Intermediation	X	0.5095	0.9190
5231	Securities and Commodity Contracts Intermediation and Brokerage	X	0.5508	0.9093
5232	Securities and Commodity Exchanges	X	0.4689	0.9211
5239	Other Financial Investment Activities	X	0.5615	0.8794
5241	Insurance Carriers	X	0.5573	0.9391
5242	Agencies, Brokerages, and Other Insurance Related Activities	X	0.4923	0.8895
5251	Insurance and Employee Benefit Funds	X	0.4827	0.9036
5259	Other Investment Pools and Funds	X	0.5068	0.8778
5311	Lessors of Real Estate	X	0.4624	0.8893
5312	Offices of Real Estate Agents and Brokers	X	0.4656	0.8707
5313	Activities Related to Real Estate	X	0.4687	0.9231
5321	Automotive Equipment Rental and Leasing	X	0.4882	0.8803
5322	Consumer Goods Rental	X	0.4953	0.8821
5323	General Rental Centers	X	0.4509	0.8823
5331	Lessors of Nonfinancial Intangible Assets (except Copyrighted Works)	X	0.5263	0.9098
5411	Legal Services	X	0.4644	0.9267
5412	Accounting, Tax Preparation, Bookkeeping, and Payroll Services	X	0.4503	0.9387
5413	Architectural, Engineering, and Related Services	X	0.5522	0.8268
5414	Specialized Design Services	X	0.4429	0.8443
5415	Computer Systems Design and Related Services	X	0.5514	0.8158
5416	Management, Scientific, and Technical Consulting Services	X	0.4933	0.8561
5417	Scientific Research and Development Services	X	0.6134	0.8594
5418	Advertising, Public Relations, and Related Services	X	0.5395	0.7921
5419	Other Professional, Scientific, and Technical Services	X	0.4766	0.9053
5511	Management of Companies and Enterprises	X	0.5406	0.7303
5611	Office Administrative Services	X	0.4527	0.8275
5613	Employment Services	X	0.4415	0.8946
5614	Business Support Services	X	0.4595	0.9023
5615	Travel Arrangement and Reservation Services	X	0.5187	0.8862
5616	Investigation and Security Services	X	0.4331	0.9163
5617	Services to Buildings and Dwellings	X	0.3930	0.9950
5619	Other Support Services	X	0.4617	0.9218
5621	Waste Collection	X	0.4071	0.9246
5622	Waste Treatment and Disposal	X	0.4708	0.8808
5629	Remediation and Other Waste Management Services	X	0.4914	0.9027
6111	Elementary and Secondary Schools	X	0.4622	0.7502
6112	Junior Colleges	X	0.4531	0.8698
6113	Colleges, Universities, and Professional Schools	X	0.4828	0.9190
6114	Business Schools and Computer and Management Training	X	0.4207	0.9396
6115	Technical and Trade Schools	X	0.4077	0.9115
6116	Other Schools and Instruction	X	0.4250	0.9323
6117	Educational Support Services	X	0.4316	0.8264
6212	Offices of Dentists	X	0.4516	0.8997
6214	Outpatient Care Centers	X	0.5425	0.7959
6215	Medical and Diagnostic Laboratories	X	0.5337	0.8742
6216	Home Health Care Services	X	0.4173	0.9092
6231	Nursing Care Facilities (Skilled Nursing Facilities)	X	0.4585	0.9324

Table 8: Compatibility Index and Desirability Index Scores - All Industries

NAICS4	Description	Existing	DI	CI
6232	Residential Intellectual and Developmental Disability, Mental Health, and Substance Abuse Fac	X	0.4783	0.8993
6233	Continuing Care Retirement Communities and Assisted Living Facilities for the Elderly	X	0.4643	0.8860
6239	Other Residential Care Facilities	X	0.4331	0.8280
6241	Individual and Family Services	X	0.4182	0.9233
6242	Community Food and Housing, and Emergency and Other Relief Services	X	0.3828	0.8957
6243	Vocational Rehabilitation Services	X	0.4789	0.8911
6244	Child Day Care Services	X	0.4911	0.8805
7112	Spectator Sports	X	0.4219	0.9120
7113	Promoters of Performing Arts, Sports, and Similar Events		0.4452	0.9034
7114	Agents and Managers for Artists, Athletes, Entertainers, and Other Public Figures		0.4563	0.8856
7121	Museums, Historical Sites, and Similar Institutions	X	0.4563	0.5647
7131	Amusement Parks and Arcades	X	0.4028	0.8886
7139	Other Amusement and Recreation Industries	X	0.4359	0.9210
7212	RV (Recreational Vehicle) Parks and Recreational Camps	X	0.4597	0.8976
7213	Rooming and Boarding Houses, Dormitories, and Workers' Camps	X	0.4397	0.8909
7223	Special Food Services	X	0.4472	0.8045
7225	Restaurants and Other Eating Places	X	0.4534	0.8799
8112	Electronic and Precision Equipment Repair and Maintenance	X	0.3968	0.9185
8113	Commercial and Industrial Machinery and Equipment (except Automotive and Electronic) Repa	X	0.4331	0.7836
8114	Personal and Household Goods Repair and Maintenance	X	0.4164	0.9176
8121	Personal Care Services	X	0.3866	0.9085
8122	Death Care Services	X	0.3869	0.9056
8123	Drycleaning and Laundry Services	X	0.3923	0.8752
8129	Other Personal Services	X	0.4049	0.9037
8131	Religious Organizations	X	0.4930	0.9732
8132	Grantmaking and Giving Services	X	0.4698	0.9219
8133	Social Advocacy Organizations	X	0.5636	0.8751
8134	Civic and Social Organizations		0.4287	0.9760
8139	Business, Professional, Labor, Political, and Similar Organizations	X	0.4796	0.9156
9261	Administration of Economic Programs		0.5016	0.9062