

Table 1: San Miguel County, NM Community Development Goal Rankings

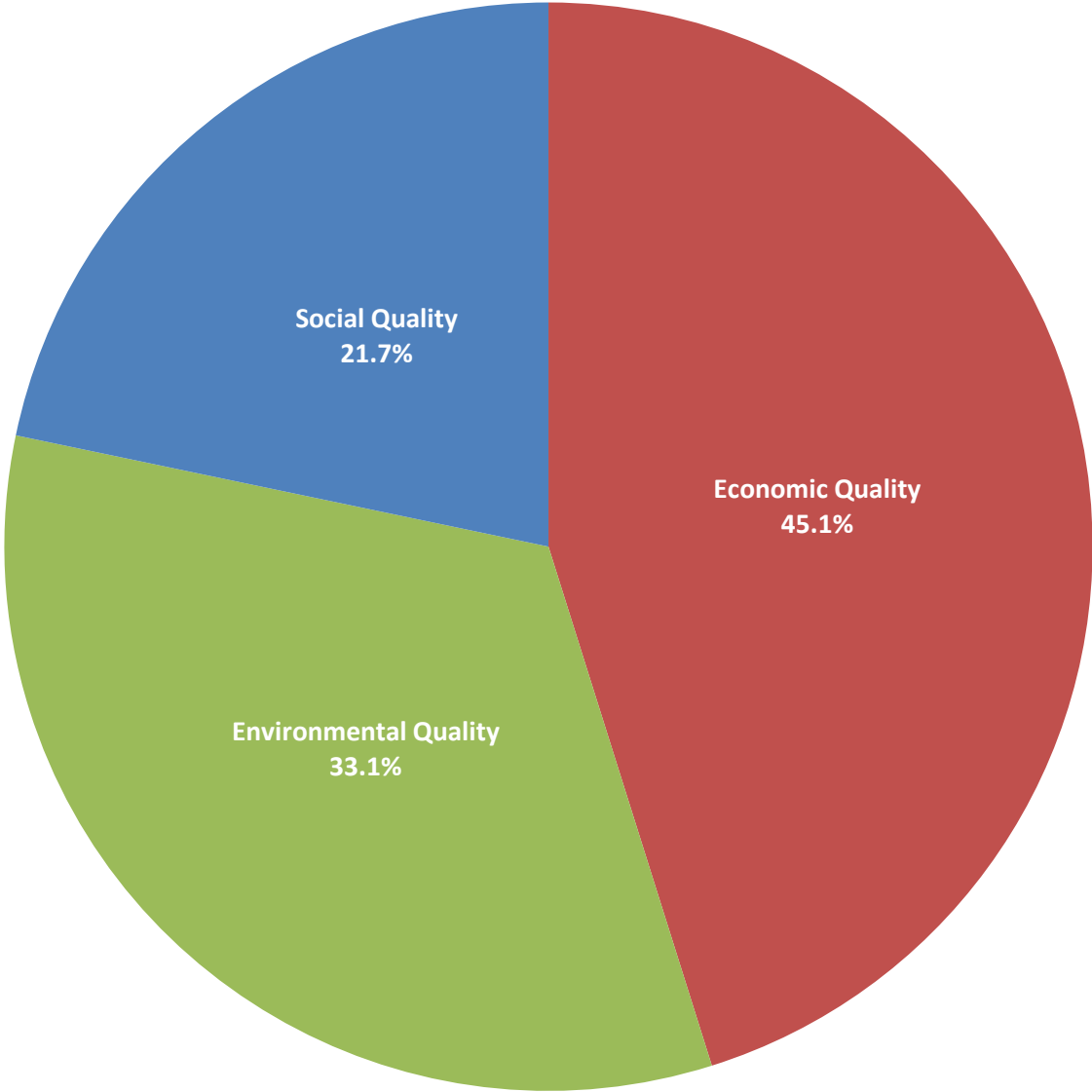
<i>Goal</i>	<i>Weight</i>	<i>Rank</i>
Economic Quality	45.10%	1
Environmental Quality	33.10%	2
Social Quality	21.70%	3

Table 2: Community Development Indicator Rankings

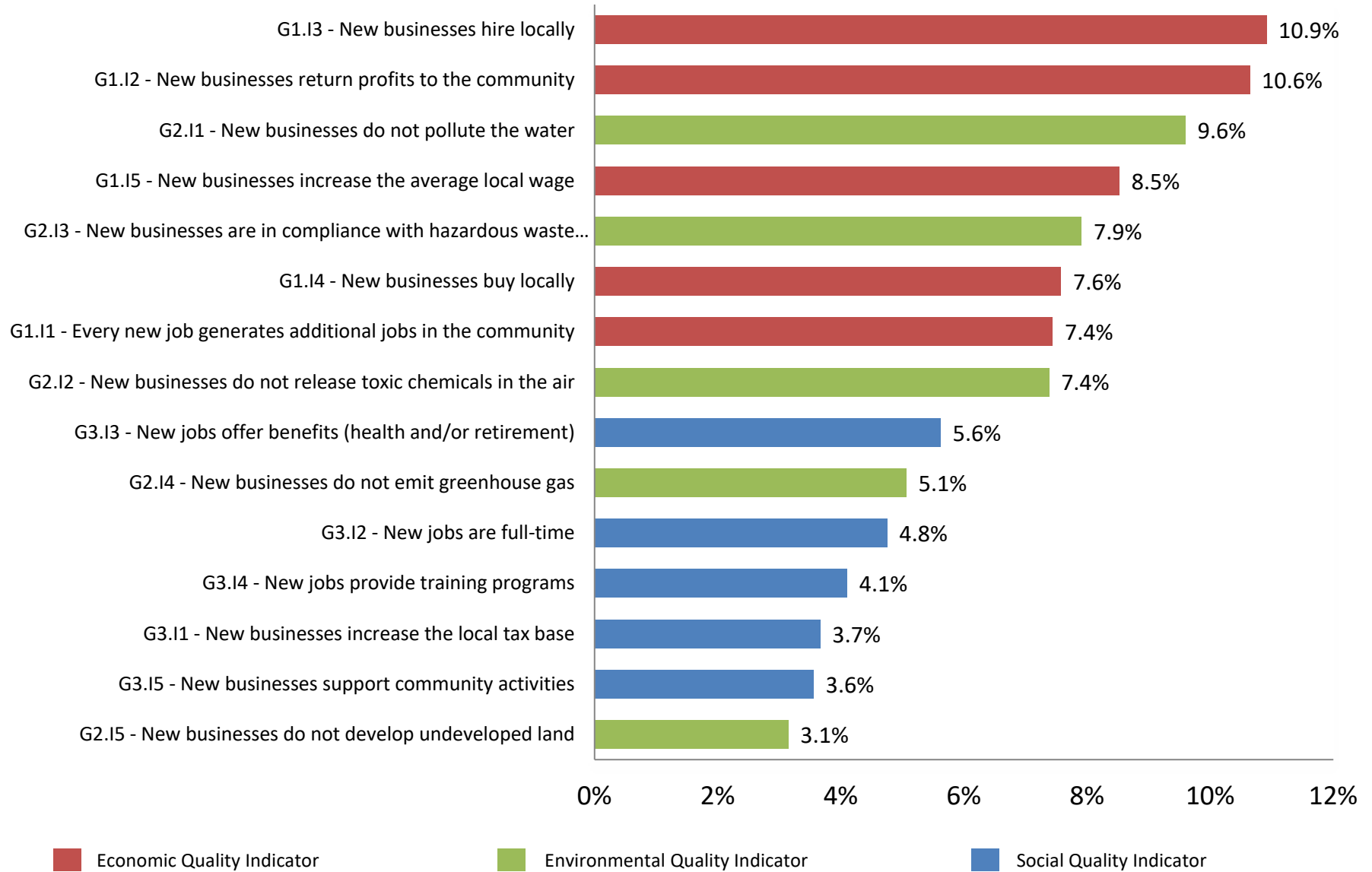
<i>Indicator</i>	<i>Weight</i>	<i>Rank</i>
G1.I1 - Every new job generates additional jobs in the community	7.44%	7
G1.I2 - New businesses return profits to the community	10.64%	2
G1.I3 - New businesses hire locally	10.91%	1
G1.I4 - New businesses buy locally	7.58%	6
G1.I5 - New businesses increase the average local wage	8.52%	4
G2.I1 - New businesses do not pollute the water	9.60%	3
G2.I2 - New businesses do not release toxic chemicals in the air	7.38%	8
G2.I3 - New businesses are in compliance with hazardous waste management	7.91%	5
G2.I4 - New businesses do not emit greenhouse gas	5.06%	10
G2.I5 - New businesses do not develop undeveloped land	3.14%	15
G3.I1 - New businesses increase the local tax base	3.67%	13
G3.I2 - New jobs are full-time	4.75%	11
G3.I3 - New jobs offer benefits (health and/or retirement)	5.62%	9
G3.I4 - New jobs provide training programs	4.10%	12
G3.I5 - New businesses support community activities	3.56%	14

Number of observations	23
------------------------	----

**Figure 1: Community Development Goal Weights:
San Miguel County, NM**



**Figure 2: Community Development Indicator Weights:
San Miguel County, NM**



**Figure 3: San Miguel County, NM ASAP Results
All NAICS**

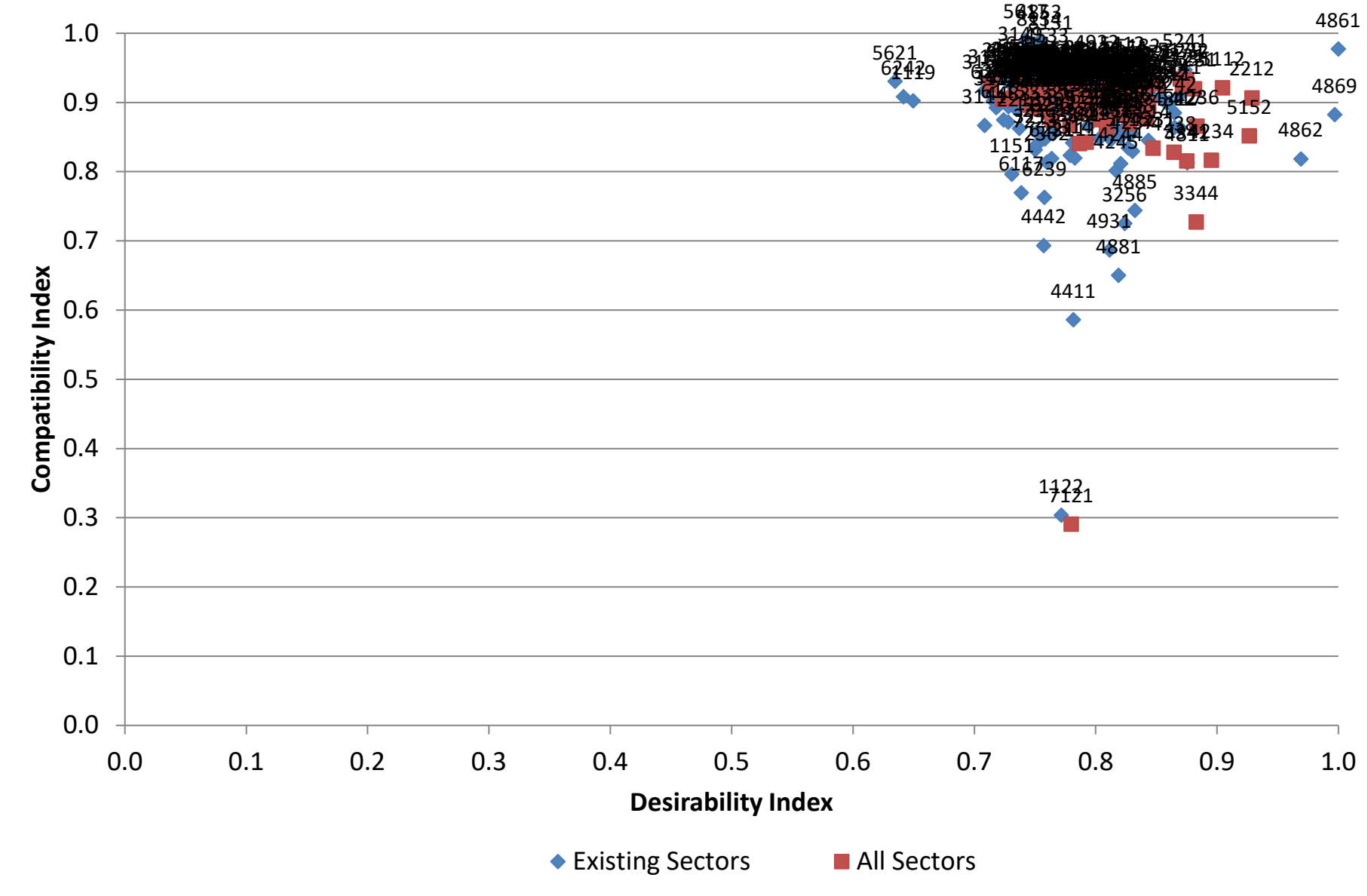


Figure 4: San Miguel County, NM ASAP Results
High Index NAICS

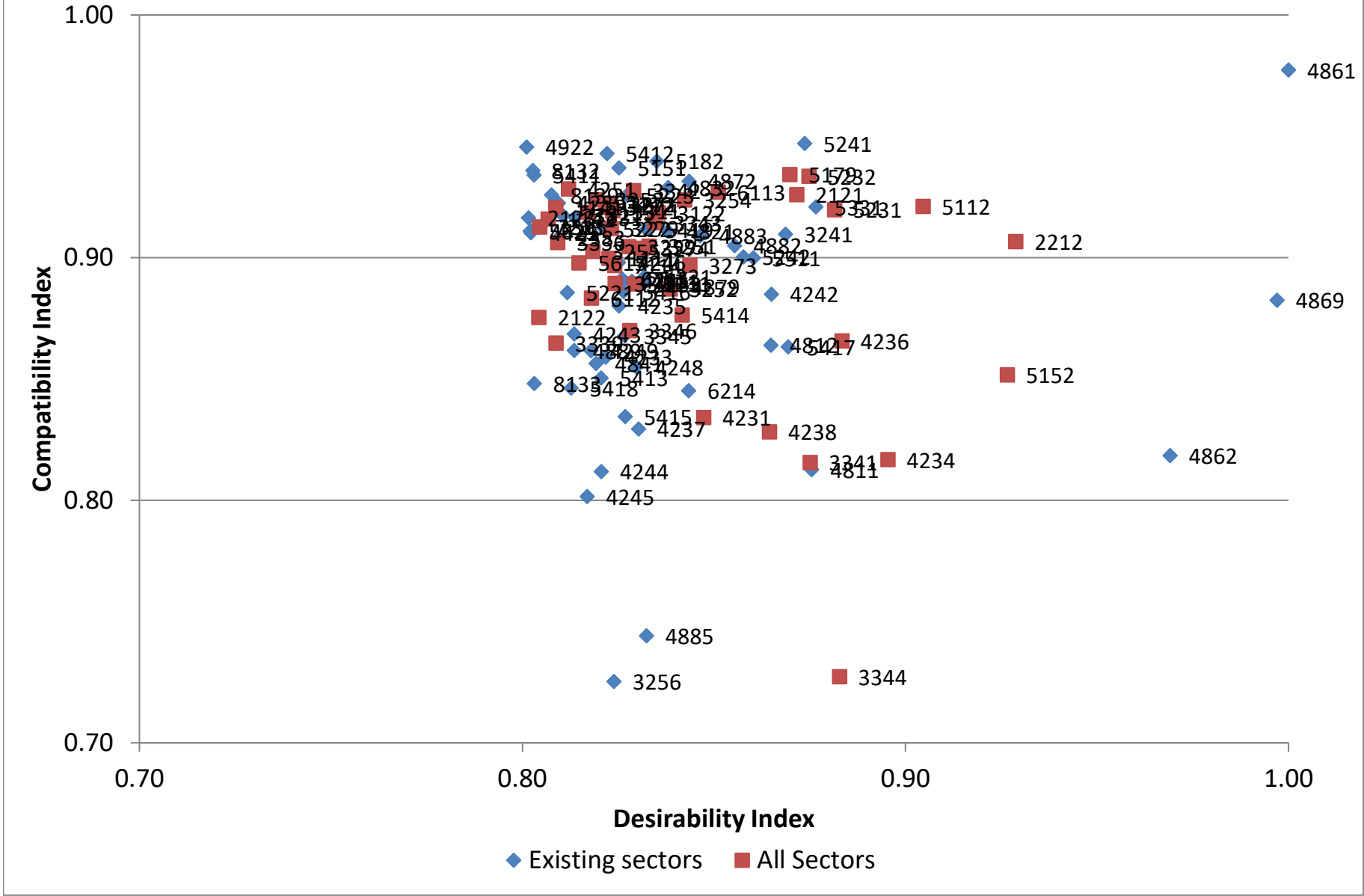


Figure 5: San Miguel County, NM ASAP Results
Target NAICS

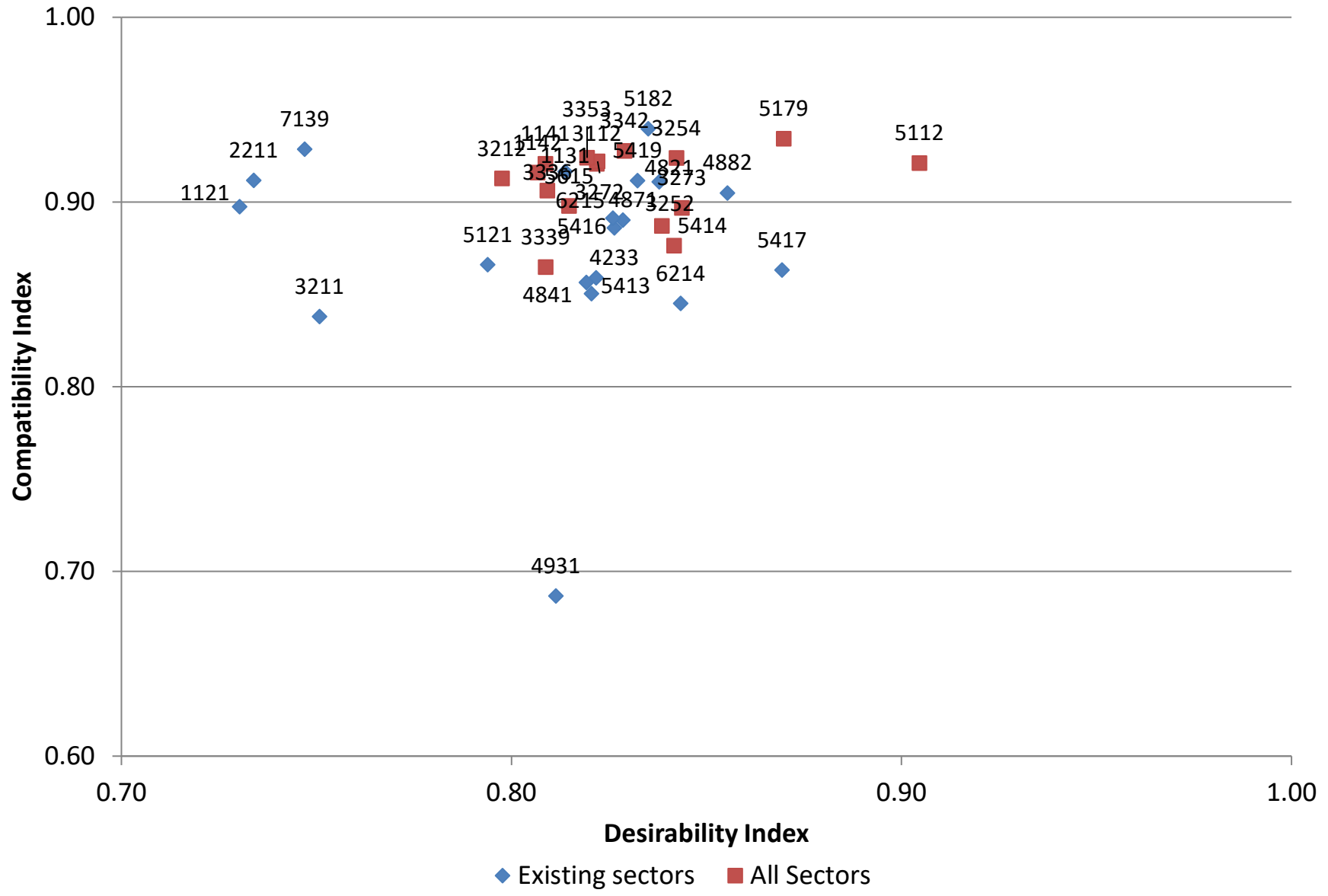


Table 3: Industries with High Desirability and Compatibility Index Scores (Index > .80)

NAICS4	Description	Existing	DI	CI
4861	Pipeline Transportation of Crude Oil	X	1.0000	0.9773
5241	Insurance Carriers	X	0.8737	0.9470
4922	Local Messengers and Local Delivery	X	0.8011	0.9456
5412	Accounting, Tax Preparation, Bookkeeping, and Payroll Services	X	0.8221	0.9429
5182	Data Processing, Hosting, and Related Services	X	0.8351	0.9397
5151	Radio and Television Broadcasting	X	0.8252	0.9370
8132	Grantmaking and Giving Services	X	0.8027	0.9359
5179	Other Telecommunications		0.8698	0.9342
5411	Legal Services	X	0.8030	0.9340
5232	Securities and Commodity Exchanges		0.8748	0.9335
4872	Scenic and Sightseeing Transportation, Water	X	0.8435	0.9315
4832	Inland Water Transportation	X	0.8381	0.9289
4251	Wholesale Electronic Markets and Agents and Brokers		0.8120	0.9283
3342	Communications Equipment Manufacturing		0.8290	0.9276
6113	Colleges, Universities, and Professional Schools		0.8511	0.9270
2121	Coal Mining		0.8716	0.9259
5223	Activities Related to Credit Intermediation	X	0.8274	0.9258
8139	Business, Professional, Labor, Political, and Similar Organizations	X	0.8076	0.9258
3353	Electrical Equipment Manufacturing		0.8194	0.9239
3254	Pharmaceutical and Medicine Manufacturing		0.8423	0.9238
4239	Miscellaneous Durable Goods Merchant Wholesalers	X	0.8094	0.9225
3271	Clay Product and Refractory Manufacturing		0.8230	0.9220
3272	Glass and Glass Product Manufacturing		0.8221	0.9220
5112	Software Publishers		0.9046	0.9211
5331	Lessors of Nonfinancial Intangible Assets (except Copyrighted Works)	X	0.8766	0.9209
3112	Grain and Oilseed Milling		0.8219	0.9207
1141	Fishing		0.8087	0.9206
5231	Securities and Commodity Contracts Intermediation and Brokerage		0.8815	0.9197
3311	Iron and Steel Mills and Ferroalloy Manufacturing		0.8236	0.9192
3113	Sugar and Confectionery Product Manufacturing		0.8170	0.9186
3122	Tobacco Manufacturing		0.8355	0.9184
2382	Building Equipment Contractors	X	0.8105	0.9174
1131	Timber Tract Operations	X	0.8138	0.9165
2123	Nonmetallic Mineral Mining and Quarrying	X	0.8016	0.9164
1142	Hunting and Trapping		0.8067	0.9159
3343	Audio and Video Equipment Manufacturing		0.8345	0.9144
3315	Foundries		0.8045	0.9126
7213	Rooming and Boarding Houses, Dormitories, and Workers' Camps	X	0.8036	0.9126
3279	Other Nonmetallic Mineral Product Manufacturing		0.8232	0.9120
5222	Nondepository Credit Intermediation	X	0.8213	0.9119
5419	Other Professional, Scientific, and Technical Services	X	0.8323	0.9116
4821	Rail Transportation	X	0.8379	0.9109
5629	Remediation and Other Waste Management Services	X	0.8020	0.9109
4421	Furniture Stores	X	0.8022	0.9102
3241	Petroleum and Coal Products Manufacturing	X	0.8687	0.9097
4883	Support Activities for Water Transportation	X	0.8464	0.9090
2383	Building Finishing Contractors	X	0.8093	0.9080
2212	Natural Gas Distribution		0.9288	0.9066
3336	Engine, Turbine, and Power Transmission Equipment Manufacturing		0.8092	0.9062
4882	Support Activities for Rail Transportation	X	0.8554	0.9049

Table 3: Industries with High Desirability and Compatibility Index Scores (Index > .80)

NAICS4	Description	Existing	DI	CI
3251	Basic Chemical Manufacturing		0.8331	0.9047
3259	Other Chemical Product and Preparation Manufacturing		0.8277	0.9045
3274	Lime and Gypsum Product Manufacturing		0.8312	0.9038
3255	Paint, Coating, and Adhesive Manufacturing		0.8184	0.9026
5242	Agencies, Brokerages, and Other Insurance Related Activities	X	0.8577	0.9003
5511	Management of Companies and Enterprises	X	0.8603	0.8999
1111	Oilseed and Grain Farming		0.8226	0.8997
4246	Chemical and Allied Products Merchant Wholesalers	X	0.8251	0.8980
5615	Travel Arrangement and Reservation Services		0.8148	0.8978
3273	Cement and Concrete Product Manufacturing		0.8437	0.8968
7114	Agents and Managers for Artists, Athletes, Entertainers, and Other Public Figures		0.8241	0.8967
5321	Automotive Equipment Rental and Leasing	X	0.8319	0.8921
6215	Medical and Diagnostic Laboratories	X	0.8260	0.8912
4241	Paper and Paper Product Merchant Wholesalers	X	0.8262	0.8904
4871	Scenic and Sightseeing Transportation, Land	X	0.8286	0.8902
5111	Newspaper, Periodical, Book, and Directory Publishers	X	0.8316	0.8894
3391	Medical Equipment and Supplies Manufacturing		0.8242	0.8893
3253	Pesticide, Fertilizer, and Other Agricultural Chemical Manufacturing		0.8292	0.8891
4879	Scenic and Sightseeing Transportation, Other	X	0.8392	0.8880
3252	Resin, Synthetic Rubber, and Artificial and Synthetic Fibers and Filaments Manufacturing		0.8386	0.8871
5416	Management, Scientific, and Technical Consulting Services	X	0.8264	0.8860
5221	Depository Credit Intermediation	X	0.8117	0.8856
4242	Drugs and Druggists' Sundries Merchant Wholesalers	X	0.8650	0.8849
6112	Junior Colleges		0.8180	0.8833
4869	Other Pipeline Transportation	X	0.9970	0.8824
4235	Metal and Mineral (except Petroleum) Merchant Wholesalers	X	0.8252	0.8801
5414	Specialized Design Services		0.8417	0.8763
2122	Metal Ore Mining		0.8043	0.8753
3346	Manufacturing and Reproducing Magnetic and Optical Media		0.8280	0.8699
4243	Apparel, Piece Goods, and Notions Merchant Wholesalers	X	0.8135	0.8685
3345	Navigational, Measuring, Electromedical, and Control Instruments Manufacturing	X	0.8267	0.8678
4236	Household Appliances and Electrical and Electronic Goods Merchant Wholesalers		0.8834	0.8657
3339	Other General Purpose Machinery Manufacturing		0.8088	0.8648
4812	Nonscheduled Air Transportation	X	0.8649	0.8639
5417	Scientific Research and Development Services	X	0.8694	0.8632
4889	Other Support Activities for Transportation	X	0.8135	0.8617
4249	Miscellaneous Nondurable Goods Merchant Wholesalers	X	0.8179	0.8616
4233	Lumber and Other Construction Materials Merchant Wholesalers	X	0.8217	0.8590
4841	General Freight Trucking	X	0.8192	0.8564
4248	Beer, Wine, and Distilled Alcoholic Beverage Merchant Wholesalers	X	0.8297	0.8549
5152	Cable and Other Subscription Programming		0.9266	0.8517
5413	Architectural, Engineering, and Related Services	X	0.8205	0.8504
8133	Social Advocacy Organizations	X	0.8031	0.8481
5418	Advertising, Public Relations, and Related Services	X	0.8127	0.8462
6214	Outpatient Care Centers	X	0.8434	0.8451
5415	Computer Systems Design and Related Services	X	0.8268	0.8345
4231	Motor Vehicle and Motor Vehicle Parts and Supplies Merchant Wholesalers		0.8473	0.8341
4237	Hardware, and Plumbing and Heating Equipment and Supplies Merchant Wholesalers	X	0.8303	0.8294
4238	Machinery, Equipment, and Supplies Merchant Wholesalers		0.8645	0.8282
4862	Pipeline Transportation of Natural Gas	X	0.9691	0.8184

Table 3: Industries with High Desirability and Compatibility Index Scores (Index > .80)

NAICS4	Description	Existing	DI	CI
4234	Professional and Commercial Equipment and Supplies Merchant Wholesalers		0.8954	0.8167
3341	Computer and Peripheral Equipment Manufacturing		0.8751	0.8156
4811	Scheduled Air Transportation	X	0.8755	0.8126
4244	Grocery and Related Product Merchant Wholesalers	X	0.8206	0.8118
4245	Farm Product Raw Material Merchant Wholesalers	X	0.8169	0.8015

Table 4: Industries with High Desirability and Compatibility Index Scores (Index > .80)

NAICS3	Description	Count
111	Crop Production	1
113	Forest and Logging	1
114	Fishing, Hunting and Trapping	2
212	Mining (except Oil and Gas)	3
221	Utilities	1
238	Specialty Trade Contractors	2
311	Food Manufacturing	2
312	Beverage and Tobacco Product Manufacturing	1
324	Petroleum and Coal Products Manufacturing	1
325	Chemical Manufacturing	6
327	Nonmetallic Mineral Product Manufacturing	5
331	Primary Metal Manufacturing	2
333	Machinery Manufacturing	2
334	Computer and Electronic Product Manufacturing	5
335	Electrical Equipment, Appliance, and Component Manufacturing	1
339	Miscellaneous Manufacturing	1
423	Merchant Wholesalers, Durable Goods	8
424	Merchant Wholesalers, Nondurable Goods	8
425	Wholesale Electronic Markets and Agents and Brokers	1
442	Furniture and Home Furnishings Stores	1
481	Air Transportation	2
482	Rail Transportation	1
483	Water Transportation	1
484	Truck Transportation	1
486	Pipeline Transportation	3
487	Scenic and Sightseeing Transportation	3
488	Support Activities for Transportation	3
492	Couriers and Messengers	1
511	Publishing Industries	2
515	Broadcasting	2
517	Telecommunications	1
518	Data Processing, Hosting, and Related Services	1
522	Credit Intermediation and Related Activities	3
523	Securities, Commodity Contracts, and Other Financial Investments and Related Activities	2
524	Insurance Carriers and Related Activities	2
532	Rental and Leasing Services	1
533	Lessors of Nonfinancial Intangible Assets	1
541	Professional, Scientific, and Technical Services	9
551	Management of Companies and Enterprises	1
561	Administrative and Support Services	1
562	Waste Management and Remediation Services	1
611	Educational Services	2
621	Ambulatory Health Care Services	2

711	Performing Arts, Spectator Sports, and Related Industries	1
721	Accomodation	1
813	Religious, Grantmaking, Civic, Professional, and Similar Organizations	3

Table 5: San Miguel County, NM Target Industries

NAICS4	Description	Existing	DI	CI
1121	Cattle Ranching and Farming	X	0.7303	0.8975
1131	Timber Tract Operations	X	0.8138	0.9165
1141	Fishing		0.8087	0.9206
1142	Hunting and Trapping		0.8067	0.9159
2211	Electric Power Generation, Transmission and Distribution	X	0.7339	0.9117
3112	Grain and Oilseed Milling		0.8219	0.9207
3116	Animal Slaughtering and Processing		0.7774	0.9301
3211	Sawmills and Wood Preservation	X	0.7508	0.8380
3212	Veneer, Plywood and Engineered Product Manufacturing		0.7976	0.9127
3252	Resin, Synthetic Rubber, and Artificial and Synthetic Fibers and Filaments Manufacturing		0.8386	0.8871
3254	Pharmaceutical and Medicine Manufacturing		0.8423	0.9238
3272	Glass and Glass Product Manufacturing		0.8221	0.9220
3273	Cement and Concrete Product Manufacturing		0.8437	0.8968
3336	Engine, Turbine, and Power Transmission Equipment Manufacturing		0.8092	0.9062
3339	Other General Purpose Machinery Manufacturing		0.8088	0.8648
3342	Communications Equipment Manufacturing		0.8290	0.9276
3353	Electrical Equipment Manufacturing		0.8194	0.9239
4233	Lumber and Other Construction Materials Merchant Wholesalers	X	0.8217	0.8590
4821	Rail Transportation	X	0.8379	0.9109
4841	General Freight Trucking	X	0.8192	0.8564
4871	Scenic and Sightseeing Transportation, Land	X	0.8286	0.8902
4882	Support Activities for Rail Transportation	X	0.8554	0.9049
4931	Warehousing and Storage	X	0.8114	0.6867
5112	Software Publishers		0.9046	0.9211
5121	Motion Picture and Video Industries	X	0.7939	0.8660
5179	Other Telecommunications		0.8698	0.9342
5182	Data Processing, Hosting, and Related Services	X	0.8351	0.9397
5413	Architectural, Engineering, and Related Services	X	0.8205	0.8504
5414	Specialized Design Services		0.8417	0.8763
5416	Management, Scientific, and Technical Consulting Services	X	0.8264	0.8860
5417	Scientific Research and Development Services	X	0.8694	0.8632
5419	Other Professional, Scientific, and Technical Services	X	0.8323	0.9116
5615	Travel Arrangement and Reservation Services		0.8148	0.8978
6113	Colleges, Universities, and Professional Schools		0.8511	0.9270
6214	Outpatient Care Centers	X	0.8434	0.8451
6215	Medical and Diagnostic Laboratories	X	0.8260	0.8912

Table 6: Industries with High Desirability Index Scores (DI > .80)

NAICS4	Description	Existing	DI	CI
4861	Pipeline Transportation of Crude Oil	X	1.0000	0.9773
4869	Other Pipeline Transportation	X	0.9970	0.8824
4862	Pipeline Transportation of Natural Gas	X	0.9691	0.8184
2212	Natural Gas Distribution		0.9288	0.9066
5152	Cable and Other Subscription Programming		0.9266	0.8517
5112	Software Publishers		0.9046	0.9211
4234	Professional and Commercial Equipment and Supplies Merchant Wholesalers		0.8954	0.8167
4236	Household Appliances and Electrical and Electronic Goods Merchant Wholesalers		0.8834	0.8657
3344	Semiconductor and Other Electronic Component Manufacturing		0.8828	0.7273
5231	Securities and Commodity Contracts Intermediation and Brokerage		0.8815	0.9197
5331	Lessors of Nonfinancial Intangible Assets (except Copyrighted Works)	X	0.8766	0.9209
4811	Scheduled Air Transportation	X	0.8755	0.8126
3341	Computer and Peripheral Equipment Manufacturing		0.8751	0.8156
5232	Securities and Commodity Exchanges		0.8748	0.9335
5241	Insurance Carriers	X	0.8737	0.9470
2121	Coal Mining		0.8716	0.9259
5179	Other Telecommunications		0.8698	0.9342
5417	Scientific Research and Development Services	X	0.8694	0.8632
3241	Petroleum and Coal Products Manufacturing	X	0.8687	0.9097
4242	Drugs and Druggists' Sundries Merchant Wholesalers	X	0.8650	0.8849
4812	Nonscheduled Air Transportation	X	0.8649	0.8639
4238	Machinery, Equipment, and Supplies Merchant Wholesalers		0.8645	0.8282
5511	Management of Companies and Enterprises	X	0.8603	0.8999
5242	Agencies, Brokerages, and Other Insurance Related Activities	X	0.8577	0.9003
4882	Support Activities for Rail Transportation	X	0.8554	0.9049
6113	Colleges, Universities, and Professional Schools		0.8511	0.9270
4231	Motor Vehicle and Motor Vehicle Parts and Supplies Merchant Wholesalers		0.8473	0.8341
4883	Support Activities for Water Transportation	X	0.8464	0.9090
3273	Cement and Concrete Product Manufacturing		0.8437	0.8968
4872	Scenic and Sightseeing Transportation, Water	X	0.8435	0.9315
6214	Outpatient Care Centers	X	0.8434	0.8451
3254	Pharmaceutical and Medicine Manufacturing		0.8423	0.9238
5414	Specialized Design Services		0.8417	0.8763
4879	Scenic and Sightseeing Transportation, Other	X	0.8392	0.8880
3252	Resin, Synthetic Rubber, and Artificial and Synthetic Fibers and Filaments Manufacturing		0.8386	0.8871
4832	Inland Water Transportation	X	0.8381	0.9289
4821	Rail Transportation	X	0.8379	0.9109
3122	Tobacco Manufacturing		0.8355	0.9184
5182	Data Processing, Hosting, and Related Services	X	0.8351	0.9397
3343	Audio and Video Equipment Manufacturing		0.8345	0.9144
3251	Basic Chemical Manufacturing		0.8331	0.9047
4885	Freight Transportation Arrangement	X	0.8324	0.7441
5419	Other Professional, Scientific, and Technical Services	X	0.8323	0.9116
5321	Automotive Equipment Rental and Leasing	X	0.8319	0.8921
5111	Newspaper, Periodical, Book, and Directory Publishers	X	0.8316	0.8894
3274	Lime and Gypsum Product Manufacturing		0.8312	0.9038
4237	Hardware, and Plumbing and Heating Equipment and Supplies Merchant Wholesalers	X	0.8303	0.8294
4248	Beer, Wine, and Distilled Alcoholic Beverage Merchant Wholesalers	X	0.8297	0.8549
3253	Pesticide, Fertilizer, and Other Agricultural Chemical Manufacturing		0.8292	0.8891

Table 6: Industries with High Desirability Index Scores (DI > .80)

NAICS4	Description	Existing	DI	CI
3342	Communications Equipment Manufacturing		0.8290	0.9276
4871	Scenic and Sightseeing Transportation, Land	X	0.8286	0.8902
3346	Manufacturing and Reproducing Magnetic and Optical Media		0.8280	0.8699
3259	Other Chemical Product and Preparation Manufacturing		0.8277	0.9045
5223	Activities Related to Credit Intermediation	X	0.8274	0.9258
5415	Computer Systems Design and Related Services	X	0.8268	0.8345
3345	Navigational, Measuring, Electromedical, and Control Instruments Manufacturing	X	0.8267	0.8678
5416	Management, Scientific, and Technical Consulting Services	X	0.8264	0.8860
4241	Paper and Paper Product Merchant Wholesalers	X	0.8262	0.8904
6215	Medical and Diagnostic Laboratories	X	0.8260	0.8912
4235	Metal and Mineral (except Petroleum) Merchant Wholesalers	X	0.8252	0.8801
5151	Radio and Television Broadcasting	X	0.8252	0.9370
4246	Chemical and Allied Products Merchant Wholesalers	X	0.8251	0.8980
3391	Medical Equipment and Supplies Manufacturing		0.8242	0.8893
7114	Agents and Managers for Artists, Athletes, Entertainers, and Other Public Figures		0.8241	0.8967
3256	Soap, Cleaning Compound, and Toilet Preparation Manufacturing	X	0.8239	0.7253
3311	Iron and Steel Mills and Ferroalloy Manufacturing		0.8236	0.9192
3279	Other Nonmetallic Mineral Product Manufacturing		0.8232	0.9120
3271	Clay Product and Refractory Manufacturing		0.8230	0.9220
1111	Oilseed and Grain Farming		0.8226	0.8997
3272	Glass and Glass Product Manufacturing		0.8221	0.9220
5412	Accounting, Tax Preparation, Bookkeeping, and Payroll Services	X	0.8221	0.9429
3112	Grain and Oilseed Milling		0.8219	0.9207
4233	Lumber and Other Construction Materials Merchant Wholesalers	X	0.8217	0.8590
5222	Nondepository Credit Intermediation	X	0.8213	0.9119
4244	Grocery and Related Product Merchant Wholesalers	X	0.8206	0.8118
5413	Architectural, Engineering, and Related Services	X	0.8205	0.8504
3353	Electrical Equipment Manufacturing		0.8194	0.9239
4841	General Freight Trucking	X	0.8192	0.8564
4881	Support Activities for Air Transportation	X	0.8189	0.6502
3255	Paint, Coating, and Adhesive Manufacturing		0.8184	0.9026
6112	Junior Colleges		0.8180	0.8833
4249	Miscellaneous Nondurable Goods Merchant Wholesalers	X	0.8179	0.8616
3113	Sugar and Confectionery Product Manufacturing		0.8170	0.9186
4245	Farm Product Raw Material Merchant Wholesalers	X	0.8169	0.8015
5615	Travel Arrangement and Reservation Services		0.8148	0.8978
1131	Timber Tract Operations	X	0.8138	0.9165
4243	Apparel, Piece Goods, and Notions Merchant Wholesalers	X	0.8135	0.8685
4889	Other Support Activities for Transportation	X	0.8135	0.8617
5418	Advertising, Public Relations, and Related Services	X	0.8127	0.8462
4251	Wholesale Electronic Markets and Agents and Brokers		0.8120	0.9283
5221	Depository Credit Intermediation	X	0.8117	0.8856
4931	Warehousing and Storage	X	0.8114	0.6867
2382	Building Equipment Contractors	X	0.8105	0.9174
4239	Miscellaneous Durable Goods Merchant Wholesalers	X	0.8094	0.9225
2383	Building Finishing Contractors	X	0.8093	0.9080
3336	Engine, Turbine, and Power Transmission Equipment Manufacturing		0.8092	0.9062
3339	Other General Purpose Machinery Manufacturing		0.8088	0.8648
1141	Fishing		0.8087	0.9206

Table 6: Industries with High Desirability Index Scores (DI > .80)

NAICS4	Description	Existing	DI	CI
8139	Business, Professional, Labor, Political, and Similar Organizations	X	0.8076	0.9258
1142	Hunting and Trapping		0.8067	0.9159
3315	Foundries		0.8045	0.9126
2122	Metal Ore Mining		0.8043	0.8753
7213	Rooming and Boarding Houses, Dormitories, and Workers' Camps	X	0.8036	0.9126
8133	Social Advocacy Organizations	X	0.8031	0.8481
5411	Legal Services	X	0.8030	0.9340
8132	Grantmaking and Giving Services	X	0.8027	0.9359
4421	Furniture Stores	X	0.8022	0.9102
5629	Remediation and Other Waste Management Services	X	0.8020	0.9109
2123	Nonmetallic Mineral Mining and Quarrying	X	0.8016	0.9164
4922	Local Messengers and Local Delivery	X	0.8011	0.9456

Table 7: Industries with High Compatibility Index Scores (CI > .80)

NAICS4	Description	Existing	DI	CI
5617	Services to Buildings and Dwellings	X	0.7424	0.9899
4853	Taxi and Limousine Service	X	0.7537	0.9887
8134	Civic and Social Organizations	X	0.7535	0.9796
4861	Pipeline Transportation of Crude Oil	X	1.0000	0.9773
8131	Religious Organizations	X	0.7630	0.9736
3149	Other Textile Product Mills		0.7379	0.9567
4533	Used Merchandise Stores	X	0.7596	0.9554
5241	Insurance Carriers	X	0.8737	0.9470
4922	Local Messengers and Local Delivery	X	0.8011	0.9456
5412	Accounting, Tax Preparation, Bookkeeping, and Payroll Services	X	0.8221	0.9429
6114	Business Schools and Computer and Management Training	X	0.7442	0.9429
6116	Other Schools and Instruction	X	0.7375	0.9400
5182	Data Processing, Hosting, and Related Services	X	0.8351	0.9397
2131	Support Activities for Mining	X	0.7929	0.9374
5151	Radio and Television Broadcasting	X	0.8252	0.9370
4512	Book Stores and News Dealers	X	0.7720	0.9361
4855	Charter Bus Industry	X	0.7320	0.9359
8132	Grantmaking and Giving Services	X	0.8027	0.9359
3261	Plastics Product Manufacturing	X	0.7325	0.9352
2379	Other Heavy and Civil Engineering Construction	X	0.7248	0.9343
5179	Other Telecommunications		0.8698	0.9342
4441	Building Material and Supplies Dealers	X	0.7792	0.9340
5411	Legal Services	X	0.8030	0.9340
4511	Sporting Goods, Hobby, and Musical Instrument Stores	X	0.7715	0.9339
5232	Securities and Commodity Exchanges		0.8748	0.9335
5122	Sound Recording Industries	X	0.7713	0.9330
4921	Couriers and Express Delivery Services	X	0.7668	0.9328
6241	Individual and Family Services	X	0.7283	0.9318
4872	Scenic and Sightseeing Transportation, Water	X	0.8435	0.9315
4543	Direct Selling Establishments	X	0.7493	0.9312
1152	Support Activities for Animal Production	X	0.7383	0.9311
1113	Fruit and Tree Nut Farming	X	0.7789	0.9310
5621	Waste Collection	X	0.6346	0.9305
5313	Activities Related to Real Estate	X	0.7715	0.9304
3116	Animal Slaughtering and Processing		0.7774	0.9301
4531	Florists	X	0.7437	0.9296
3359	Other Electrical Equipment and Component Manufacturing	X	0.7499	0.9292
3231	Printing and Related Support Activities	X	0.7409	0.9289
4832	Inland Water Transportation	X	0.8381	0.9289
8112	Electronic and Precision Equipment Repair and Maintenance	X	0.7285	0.9288
7139	Other Amusement and Recreation Industries	X	0.7470	0.9286
4251	Wholesale Electronic Markets and Agents and Brokers		0.8120	0.9283
1153	Support Activities for Forestry	X	0.7493	0.9282
4481	Clothing Stores	X	0.7521	0.9280
4852	Interurban and Rural Bus Transportation	X	0.7502	0.9280
3342	Communications Equipment Manufacturing		0.8290	0.9276
5619	Other Support Services	X	0.7696	0.9275
6113	Colleges, Universities, and Professional Schools		0.8511	0.9270
3333	Commercial and Service Industry Machinery Manufacturing	X	0.7459	0.9269

Table 7: Industries with High Compatibility Index Scores (CI > .80)

NAICS4	Description	Existing	DI	CI
1132	Forest Nurseries and Gathering of Forest Products	X	0.7307	0.9267
4412	Other Motor Vehicle Dealers	X	0.7867	0.9260
8113	Commercial and Industrial Machinery and Equipment (except Automotive and Electronic) Repa	X	0.7706	0.9260
2121	Coal Mining		0.8716	0.9259
4542	Vending Machine Operators	X	0.7608	0.9258
5223	Activities Related to Credit Intermediation	X	0.8274	0.9258
8139	Business, Professional, Labor, Political, and Similar Organizations	X	0.8076	0.9258
5191	Other Information Services	X	0.7934	0.9253
3151	Apparel Knitting Mills		0.7135	0.9249
3131	Fiber, Yarn, and Thread Mills		0.7400	0.9245
3121	Beverage Manufacturing	X	0.7819	0.9241
4247	Petroleum and Petroleum Products Merchant Wholesalers	X	0.7983	0.9240
3353	Electrical Equipment Manufacturing		0.8194	0.9239
3254	Pharmaceutical and Medicine Manufacturing		0.8423	0.9238
3371	Household and Institutional Furniture and Kitchen Cabinet Manufacturing		0.7810	0.9238
3324	Boiler, Tank, and Shipping Container Manufacturing		0.7693	0.9226
4239	Miscellaneous Durable Goods Merchant Wholesalers	X	0.8094	0.9225
3369	Other Transportation Equipment Manufacturing		0.7488	0.9224
3271	Clay Product and Refractory Manufacturing		0.8230	0.9220
3272	Glass and Glass Product Manufacturing		0.8221	0.9220
4859	Other Transit and Ground Passenger Transportation	X	0.7539	0.9216
8114	Personal and Household Goods Repair and Maintenance	X	0.7516	0.9216
5112	Software Publishers		0.9046	0.9211
5331	Lessors of Nonfinancial Intangible Assets (except Copyrighted Works)	X	0.8766	0.9209
3112	Grain and Oilseed Milling		0.8219	0.9207
1141	Fishing		0.8087	0.9206
1125	Aquaculture	X	0.7501	0.9201
5231	Securities and Commodity Contracts Intermediation and Brokerage		0.8815	0.9197
5616	Investigation and Security Services		0.7761	0.9196
3311	Iron and Steel Mills and Ferroalloy Manufacturing		0.8236	0.9192
3334	Ventilation, Heating, Air-Conditioning, and Commercial Refrigeration Equipment Manufacturin		0.7770	0.9188
3113	Sugar and Confectionery Product Manufacturing		0.8170	0.9186
3335	Metalworking Machinery Manufacturing		0.7588	0.9185
3122	Tobacco Manufacturing		0.8355	0.9184
5251	Insurance and Employee Benefit Funds	X	0.7528	0.9184
2372	Land Subdivision	X	0.7706	0.9181
6216	Home Health Care Services	X	0.7534	0.9181
7212	RV (Recreational Vehicle) Parks and Recreational Camps	X	0.7846	0.9181
8121	Personal Care Services	X	0.7610	0.9179
8122	Death Care Services	X	0.7563	0.9177
2382	Building Equipment Contractors	X	0.8105	0.9174
3159	Apparel Accessories and Other Apparel Manufacturing	X	0.7085	0.9172
7112	Spectator Sports		0.7913	0.9171
1131	Timber Tract Operations	X	0.8138	0.9165
2123	Nonmetallic Mineral Mining and Quarrying	X	0.8016	0.9164
3332	Industrial Machinery Manufacturing		0.7887	0.9162
1142	Hunting and Trapping		0.8067	0.9159
5613	Employment Services	X	0.7549	0.9158
9261	Administration of Economic Programs		0.7439	0.9155

Table 7: Industries with High Compatibility Index Scores (CI > .80)

NAICS4	Description	Existing	DI	CI
3219	Other Wood Product Manufacturing	X	0.7649	0.9148
5173	Wired and Wireless Telecommunications Carriers	X	0.7776	0.9148
3343	Audio and Video Equipment Manufacturing		0.8345	0.9144
3352	Household Appliance Manufacturing		0.7999	0.9144
3161	Leather and Hide Tanning and Finishing		0.7395	0.9140
5611	Office Administrative Services	X	0.7516	0.9140
5614	Business Support Services	X	0.7518	0.9140
2381	Foundation, Structure, and Building Exterior Contractors	X	0.7760	0.9137
3372	Office Furniture (including Fixtures) Manufacturing		0.7909	0.9135
3115	Dairy Product Manufacturing		0.7988	0.9133
3212	Veneer, Plywood, and Engineered Wood Product Manufacturing		0.7976	0.9127
3315	Foundries		0.8045	0.9126
7213	Rooming and Boarding Houses, Dormitories, and Workers' Camps	X	0.8036	0.9126
8129	Other Personal Services	X	0.7363	0.9122
3132	Fabric Mills		0.7405	0.9121
3366	Ship and Boat Building		0.7548	0.9121
3279	Other Nonmetallic Mineral Product Manufacturing		0.8232	0.9120
5222	Nondepository Credit Intermediation	X	0.8213	0.9119
2211	Electric Power Generation, Transmission and Distribution	X	0.7339	0.9117
5419	Other Professional, Scientific, and Technical Services	X	0.8323	0.9116
3325	Hardware Manufacturing		0.7796	0.9115
2373	Highway, Street, and Bridge Construction	X	0.7527	0.9114
3361	Motor Vehicle Manufacturing		0.7947	0.9111
3329	Other Fabricated Metal Product Manufacturing		0.7750	0.9110
3321	Forging and Stamping		0.7832	0.9109
4821	Rail Transportation	X	0.8379	0.9109
5629	Remediation and Other Waste Management Services	X	0.8020	0.9109
4452	Specialty Food Stores	X	0.7636	0.9103
4421	Furniture Stores	X	0.8022	0.9102
3365	Railroad Rolling Stock Manufacturing		0.7794	0.9100
6212	Offices of Dentists	X	0.7572	0.9099
3241	Petroleum and Coal Products Manufacturing	X	0.8687	0.9097
3169	Other Leather and Allied Product Manufacturing		0.7378	0.9094
4883	Support Activities for Water Transportation	X	0.8464	0.9090
6244	Child Day Care Services	X	0.7532	0.9088
6232	Residential Intellectual and Developmental Disability, Mental Health, and Substance Abuse Fac	X	0.7613	0.9087
6242	Community Food and Housing, and Emergency and Other Relief Services	X	0.6417	0.9083
7113	Promoters of Performing Arts, Sports, and Similar Events		0.7932	0.9082
2383	Building Finishing Contractors	X	0.8093	0.9080
3322	Cutlery and Handtool Manufacturing		0.7792	0.9078
6111	Elementary and Secondary Schools	X	0.7398	0.9070
3152	Cut and Sew Apparel Manufacturing		0.7324	0.9069
3328	Coating, Engraving, Heat Treating, and Allied Activities		0.7942	0.9069
2212	Natural Gas Distribution		0.9288	0.9066
3351	Electric Lighting Equipment Manufacturing		0.7937	0.9064
1133	Logging	X	0.7817	0.9063
3336	Engine, Turbine, and Power Transmission Equipment Manufacturing		0.8092	0.9062
4851	Urban Transit Systems	X	0.7303	0.9057
4882	Support Activities for Rail Transportation	X	0.8554	0.9049

Table 7: Industries with High Compatibility Index Scores (CI > .80)

NAICS4	Description	Existing	DI	CI
3251	Basic Chemical Manufacturing		0.8331	0.9047
4431	Electronics and Appliance Stores	X	0.7715	0.9047
3141	Textile Furnishings Mills		0.7235	0.9046
3259	Other Chemical Product and Preparation Manufacturing		0.8277	0.9045
3114	Fruit and Vegetable Preserving and Specialty Food Manufacturing		0.7918	0.9039
3274	Lime and Gypsum Product Manufacturing		0.8312	0.9038
2389	Other Specialty Trade Contractors	X	0.7289	0.9037
3312	Steel Product Manufacturing from Purchased Steel		0.7756	0.9034
4539	Other Miscellaneous Store Retailers	X	0.7324	0.9034
3222	Converted Paper Product Manufacturing		0.7867	0.9031
3255	Paint, Coating, and Adhesive Manufacturing		0.8184	0.9026
5311	Lessors of Real Estate	X	0.7732	0.9024
6243	Vocational Rehabilitation Services	X	0.7155	0.9024
1119	Other Crop Farming	X	0.6496	0.9022
7131	Amusement Parks and Arcades		0.7590	0.9022
3327	Machine Shops; Turned Product; and Screw, Nut, and Bolt Manufacturing		0.7813	0.9019
3323	Architectural and Structural Metals Manufacturing	X	0.7648	0.9018
4422	Home Furnishings Stores	X	0.7864	0.9017
5242	Agencies, Brokerages, and Other Insurance Related Activities	X	0.8577	0.9003
1112	Vegetable and Melon Farming	X	0.7722	0.9000
5511	Management of Companies and Enterprises	X	0.8603	0.8999
5312	Offices of Real Estate Agents and Brokers	X	0.7584	0.8998
1111	Oilseed and Grain Farming		0.8226	0.8997
5259	Other Investment Pools and Funds	X	0.7474	0.8989
3379	Other Furniture Related Product Manufacturing		0.7856	0.8982
4246	Chemical and Allied Products Merchant Wholesalers	X	0.8251	0.8980
5322	Consumer Goods Rental	X	0.7994	0.8979
3162	Footwear Manufacturing		0.7753	0.8978
5615	Travel Arrangement and Reservation Services		0.8148	0.8978
1121	Cattle Ranching and Farming	X	0.7303	0.8975
5622	Waste Treatment and Disposal	X	0.7844	0.8974
3273	Cement and Concrete Product Manufacturing		0.8437	0.8968
7114	Agents and Managers for Artists, Athletes, Entertainers, and Other Public Figures		0.8241	0.8967
3133	Textile and Fabric Finishing and Fabric Coating Mills		0.7461	0.8962
1114	Greenhouse, Nursery, and Floriculture Production	X	0.7200	0.8958
4461	Health and Personal Care Stores	X	0.7709	0.8958
4482	Shoe Stores	X	0.7661	0.8951
1124	Sheep and Goat Farming	X	0.7501	0.8945
3117	Seafood Product Preparation and Packaging		0.7755	0.8945
4523	General Merchandise Stores, including Warehouse Clubs and Supercenters	X	0.7281	0.8941
4541	Electronic Shopping and Mail-Order Houses	X	0.7711	0.8938
5323	General Rental Centers	X	0.7819	0.8938
5239	Other Financial Investment Activities	X	0.7965	0.8931
3118	Bakeries and Tortilla Manufacturing	X	0.7180	0.8925
5321	Automotive Equipment Rental and Leasing	X	0.8319	0.8921
3363	Motor Vehicle Parts Manufacturing		0.7568	0.8916
3119	Other Food Manufacturing	X	0.7900	0.8915
2371	Utility System Construction	X	0.7760	0.8913
6215	Medical and Diagnostic Laboratories	X	0.8260	0.8912

Table 7: Industries with High Compatibility Index Scores (CI > .80)

NAICS4	Description	Existing	DI	CI
3362	Motor Vehicle Body and Trailer Manufacturing		0.7550	0.8910
7225	Restaurants and Other Eating Places	X	0.7345	0.8906
4241	Paper and Paper Product Merchant Wholesalers	X	0.8262	0.8904
4871	Scenic and Sightseeing Transportation, Land	X	0.8286	0.8902
5111	Newspaper, Periodical, Book, and Directory Publishers	X	0.8316	0.8894
3391	Medical Equipment and Supplies Manufacturing		0.8242	0.8893
3253	Pesticide, Fertilizer, and Other Agricultural Chemical Manufacturing		0.8292	0.8891
4879	Scenic and Sightseeing Transportation, Other	X	0.8392	0.8880
8123	Drycleaning and Laundry Services		0.7869	0.8876
3252	Resin, Synthetic Rubber, and Artificial and Synthetic Fibers and Filaments Manufacturing		0.8386	0.8871
4451	Grocery Stores	X	0.7595	0.8865
5416	Management, Scientific, and Technical Consulting Services	X	0.8264	0.8860
5221	Depository Credit Intermediation	X	0.8117	0.8856
4242	Drugs and Druggists' Sundries Merchant Wholesalers	X	0.8650	0.8849
3313	Alumina and Aluminum Production and Processing		0.7984	0.8840
6112	Junior Colleges		0.8180	0.8833
4869	Other Pipeline Transportation	X	0.9970	0.8824
4235	Metal and Mineral (except Petroleum) Merchant Wholesalers	X	0.8252	0.8801
5414	Specialized Design Services		0.8417	0.8763
2122	Metal Ore Mining		0.8043	0.8753
6115	Technical and Trade Schools	X	0.7241	0.8747
3326	Spring and Wire Product Manufacturing		0.7639	0.8744
4483	Jewelry, Luggage, and Leather Goods Stores	X	0.7279	0.8715
3346	Manufacturing and Reproducing Magnetic and Optical Media		0.8280	0.8699
4243	Apparel, Piece Goods, and Notions Merchant Wholesalers	X	0.8135	0.8685
3345	Navigational, Measuring, Electromedical, and Control Instruments Manufacturing	X	0.8267	0.8678
3262	Rubber Product Manufacturing		0.7789	0.8674
3111	Animal Food Manufacturing	X	0.7084	0.8668
5121	Motion Picture and Video Industries	X	0.7939	0.8660
4236	Household Appliances and Electrical and Electronic Goods Merchant Wholesalers		0.8834	0.8657
3339	Other General Purpose Machinery Manufacturing		0.8088	0.8648
4812	Nonscheduled Air Transportation	X	0.8649	0.8639
5417	Scientific Research and Development Services	X	0.8694	0.8632
3399	Other Miscellaneous Manufacturing	X	0.7654	0.8630
2213	Water, Sewage and Other Systems	X	0.7371	0.8625
4889	Other Support Activities for Transportation	X	0.8135	0.8617
4249	Miscellaneous Nondurable Goods Merchant Wholesalers	X	0.8179	0.8616
4233	Lumber and Other Construction Materials Merchant Wholesalers	X	0.8217	0.8590
1129	Other Animal Production	X	0.7516	0.8571
4841	General Freight Trucking	X	0.8192	0.8564
4248	Beer, Wine, and Distilled Alcoholic Beverage Merchant Wholesalers	X	0.8297	0.8549
6233	Continuing Care Retirement Communities and Assisted Living Facilities for the Elderly	X	0.7649	0.8545
5152	Cable and Other Subscription Programming		0.9266	0.8517
5413	Architectural, Engineering, and Related Services	X	0.8205	0.8504
8133	Social Advocacy Organizations	X	0.8031	0.8481
2361	Residential Building Construction	X	0.7582	0.8473
5418	Advertising, Public Relations, and Related Services	X	0.8127	0.8462
6214	Outpatient Care Centers	X	0.8434	0.8451
3221	Pulp, Paper, and Paperboard Mills		0.7921	0.8428

Table 7: Industries with High Compatibility Index Scores (CI > .80)

NAICS4	Description	Existing	DI	CI
3364	Aerospace Product and Parts Manufacturing	X	0.7810	0.8417
3331	Agriculture, Construction, and Mining Machinery Manufacturing		0.7865	0.8405
3211	Sawmills and Wood Preservation	X	0.7508	0.8380
5415	Computer Systems Design and Related Services	X	0.8268	0.8345
4231	Motor Vehicle and Motor Vehicle Parts and Supplies Merchant Wholesalers		0.8473	0.8341
7223	Special Food Services	X	0.7501	0.8315
4237	Hardware, and Plumbing and Heating Equipment and Supplies Merchant Wholesalers	X	0.8303	0.8294
4238	Machinery, Equipment, and Supplies Merchant Wholesalers		0.8645	0.8282
3314	Nonferrous Metal (except Aluminum) Production and Processing	X	0.7791	0.8237
2111	Oil and Gas Extraction	X	0.7828	0.8198
6231	Nursing Care Facilities (Skilled Nursing Facilities)	X	0.7638	0.8191
4862	Pipeline Transportation of Natural Gas	X	0.9691	0.8184
4234	Professional and Commercial Equipment and Supplies Merchant Wholesalers		0.8954	0.8167
3341	Computer and Peripheral Equipment Manufacturing		0.8751	0.8156
2362	Nonresidential Building Construction	X	0.7597	0.8136
4811	Scheduled Air Transportation	X	0.8755	0.8126
4244	Grocery and Related Product Merchant Wholesalers	X	0.8206	0.8118
4245	Farm Product Raw Material Merchant Wholesalers	X	0.8169	0.8015

Table 8: Compatibility Index and Desirability Index Scores - All Industries

NAICS4	Description	Existing	DI	CI
1111	Oilseed and Grain Farming		0.8226	0.8997
1112	Vegetable and Melon Farming	X	0.7722	0.9000
1113	Fruit and Tree Nut Farming	X	0.7789	0.9310
1114	Greenhouse, Nursery, and Floriculture Production	X	0.7200	0.8958
1119	Other Crop Farming	X	0.6496	0.9022
1121	Cattle Ranching and Farming	X	0.7303	0.8975
1122	Hog and Pig Farming	X	0.7716	0.3035
1124	Sheep and Goat Farming	X	0.7501	0.8945
1125	Aquaculture	X	0.7501	0.9201
1129	Other Animal Production	X	0.7516	0.8571
1131	Timber Tract Operations	X	0.8138	0.9165
1132	Forest Nurseries and Gathering of Forest Products	X	0.7307	0.9267
1133	Logging	X	0.7817	0.9063
1141	Fishing		0.8087	0.9206
1142	Hunting and Trapping		0.8067	0.9159
1151	Support Activities for Crop Production	X	0.7309	0.7963
1152	Support Activities for Animal Production	X	0.7383	0.9311
1153	Support Activities for Forestry	X	0.7493	0.9282
2111	Oil and Gas Extraction	X	0.7828	0.8198
2121	Coal Mining		0.8716	0.9259
2122	Metal Ore Mining		0.8043	0.8753
2123	Nonmetallic Mineral Mining and Quarrying	X	0.8016	0.9164
2131	Support Activities for Mining	X	0.7929	0.9374
2211	Electric Power Generation, Transmission and Distribution	X	0.7339	0.9117
2212	Natural Gas Distribution		0.9288	0.9066
2213	Water, Sewage and Other Systems	X	0.7371	0.8625
2361	Residential Building Construction	X	0.7582	0.8473
2362	Nonresidential Building Construction	X	0.7597	0.8136
2371	Utility System Construction	X	0.7760	0.8913
2372	Land Subdivision	X	0.7706	0.9181
2373	Highway, Street, and Bridge Construction	X	0.7527	0.9114
2379	Other Heavy and Civil Engineering Construction	X	0.7248	0.9343
2381	Foundation, Structure, and Building Exterior Contractors	X	0.7760	0.9137
2382	Building Equipment Contractors	X	0.8105	0.9174
2383	Building Finishing Contractors	X	0.8093	0.9080
2389	Other Specialty Trade Contractors	X	0.7289	0.9037
3111	Animal Food Manufacturing	X	0.7084	0.8668
3112	Grain and Oilseed Milling		0.8219	0.9207
3113	Sugar and Confectionery Product Manufacturing		0.8170	0.9186
3114	Fruit and Vegetable Preserving and Specialty Food Manufacturing		0.7918	0.9039
3115	Dairy Product Manufacturing		0.7988	0.9133
3116	Animal Slaughtering and Processing		0.7774	0.9301
3117	Seafood Product Preparation and Packaging		0.7755	0.8945
3118	Bakeries and Tortilla Manufacturing	X	0.7180	0.8925
3119	Other Food Manufacturing	X	0.7900	0.8915
3121	Beverage Manufacturing	X	0.7819	0.9241
3122	Tobacco Manufacturing		0.8355	0.9184
3131	Fiber, Yarn, and Thread Mills		0.7400	0.9245
3132	Fabric Mills		0.7405	0.9121

Table 8: Compatibility Index and Desirability Index Scores - All Industries

NAICS4	Description	Existing	DI	CI
3133	Textile and Fabric Finishing and Fabric Coating Mills		0.7461	0.8962
3141	Textile Furnishings Mills		0.7235	0.9046
3149	Other Textile Product Mills		0.7379	0.9567
3151	Apparel Knitting Mills		0.7135	0.9249
3152	Cut and Sew Apparel Manufacturing		0.7324	0.9069
3159	Apparel Accessories and Other Apparel Manufacturing	X	0.7085	0.9172
3161	Leather and Hide Tanning and Finishing		0.7395	0.9140
3162	Footwear Manufacturing		0.7753	0.8978
3169	Other Leather and Allied Product Manufacturing		0.7378	0.9094
3211	Sawmills and Wood Preservation	X	0.7508	0.8380
3212	Veneer, Plywood, and Engineered Wood Product Manufacturing		0.7976	0.9127
3219	Other Wood Product Manufacturing	X	0.7649	0.9148
3221	Pulp, Paper, and Paperboard Mills		0.7921	0.8428
3222	Converted Paper Product Manufacturing		0.7867	0.9031
3231	Printing and Related Support Activities	X	0.7409	0.9289
3241	Petroleum and Coal Products Manufacturing	X	0.8687	0.9097
3251	Basic Chemical Manufacturing		0.8331	0.9047
3252	Resin, Synthetic Rubber, and Artificial and Synthetic Fibers and Filaments Manufacturing		0.8386	0.8871
3253	Pesticide, Fertilizer, and Other Agricultural Chemical Manufacturing		0.8292	0.8891
3254	Pharmaceutical and Medicine Manufacturing		0.8423	0.9238
3255	Paint, Coating, and Adhesive Manufacturing		0.8184	0.9026
3256	Soap, Cleaning Compound, and Toilet Preparation Manufacturing	X	0.8239	0.7253
3259	Other Chemical Product and Preparation Manufacturing		0.8277	0.9045
3261	Plastics Product Manufacturing	X	0.7325	0.9352
3262	Rubber Product Manufacturing		0.7789	0.8674
3271	Clay Product and Refractory Manufacturing		0.8230	0.9220
3272	Glass and Glass Product Manufacturing		0.8221	0.9220
3273	Cement and Concrete Product Manufacturing		0.8437	0.8968
3274	Lime and Gypsum Product Manufacturing		0.8312	0.9038
3279	Other Nonmetallic Mineral Product Manufacturing		0.8232	0.9120
3311	Iron and Steel Mills and Ferroalloy Manufacturing		0.8236	0.9192
3312	Steel Product Manufacturing from Purchased Steel		0.7756	0.9034
3313	Alumina and Aluminum Production and Processing		0.7984	0.8840
3314	Nonferrous Metal (except Aluminum) Production and Processing	X	0.7791	0.8237
3315	Foundries		0.8045	0.9126
3321	Forging and Stamping		0.7832	0.9109
3322	Cutlery and Handtool Manufacturing		0.7792	0.9078
3323	Architectural and Structural Metals Manufacturing	X	0.7648	0.9018
3324	Boiler, Tank, and Shipping Container Manufacturing		0.7693	0.9226
3325	Hardware Manufacturing		0.7796	0.9115
3326	Spring and Wire Product Manufacturing		0.7639	0.8744
3327	Machine Shops; Turned Product; and Screw, Nut, and Bolt Manufacturing		0.7813	0.9019
3328	Coating, Engraving, Heat Treating, and Allied Activities		0.7942	0.9069
3329	Other Fabricated Metal Product Manufacturing		0.7750	0.9110
3331	Agriculture, Construction, and Mining Machinery Manufacturing		0.7865	0.8405
3332	Industrial Machinery Manufacturing		0.7887	0.9162
3333	Commercial and Service Industry Machinery Manufacturing	X	0.7459	0.9269
3334	Ventilation, Heating, Air-Conditioning, and Commercial Refrigeration Equipment Manufacturin		0.7770	0.9188
3335	Metalworking Machinery Manufacturing		0.7588	0.9185

Table 8: Compatibility Index and Desirability Index Scores - All Industries

NAICS4	Description	Existing	DI	CI
3336	Engine, Turbine, and Power Transmission Equipment Manufacturing		0.8092	0.9062
3339	Other General Purpose Machinery Manufacturing		0.8088	0.8648
3341	Computer and Peripheral Equipment Manufacturing		0.8751	0.8156
3342	Communications Equipment Manufacturing		0.8290	0.9276
3343	Audio and Video Equipment Manufacturing		0.8345	0.9144
3344	Semiconductor and Other Electronic Component Manufacturing		0.8828	0.7273
3345	Navigational, Measuring, Electromedical, and Control Instruments Manufacturing	X	0.8267	0.8678
3346	Manufacturing and Reproducing Magnetic and Optical Media		0.8280	0.8699
3351	Electric Lighting Equipment Manufacturing		0.7937	0.9064
3352	Household Appliance Manufacturing		0.7999	0.9144
3353	Electrical Equipment Manufacturing		0.8194	0.9239
3359	Other Electrical Equipment and Component Manufacturing	X	0.7499	0.9292
3361	Motor Vehicle Manufacturing		0.7947	0.9111
3362	Motor Vehicle Body and Trailer Manufacturing		0.7550	0.8910
3363	Motor Vehicle Parts Manufacturing		0.7568	0.8916
3364	Aerospace Product and Parts Manufacturing	X	0.7810	0.8417
3365	Railroad Rolling Stock Manufacturing		0.7794	0.9100
3366	Ship and Boat Building		0.7548	0.9121
3369	Other Transportation Equipment Manufacturing		0.7488	0.9224
3371	Household and Institutional Furniture and Kitchen Cabinet Manufacturing		0.7810	0.9238
3372	Office Furniture (including Fixtures) Manufacturing		0.7909	0.9135
3379	Other Furniture Related Product Manufacturing		0.7856	0.8982
3391	Medical Equipment and Supplies Manufacturing		0.8242	0.8893
3399	Other Miscellaneous Manufacturing	X	0.7654	0.8630
4231	Motor Vehicle and Motor Vehicle Parts and Supplies Merchant Wholesalers		0.8473	0.8341
4233	Lumber and Other Construction Materials Merchant Wholesalers	X	0.8217	0.8590
4234	Professional and Commercial Equipment and Supplies Merchant Wholesalers		0.8954	0.8167
4235	Metal and Mineral (except Petroleum) Merchant Wholesalers	X	0.8252	0.8801
4236	Household Appliances and Electrical and Electronic Goods Merchant Wholesalers		0.8834	0.8657
4237	Hardware, and Plumbing and Heating Equipment and Supplies Merchant Wholesalers	X	0.8303	0.8294
4238	Machinery, Equipment, and Supplies Merchant Wholesalers		0.8645	0.8282
4239	Miscellaneous Durable Goods Merchant Wholesalers	X	0.8094	0.9225
4241	Paper and Paper Product Merchant Wholesalers	X	0.8262	0.8904
4242	Drugs and Druggists' Sundries Merchant Wholesalers	X	0.8650	0.8849
4243	Apparel, Piece Goods, and Notions Merchant Wholesalers	X	0.8135	0.8685
4244	Grocery and Related Product Merchant Wholesalers	X	0.8206	0.8118
4245	Farm Product Raw Material Merchant Wholesalers	X	0.8169	0.8015
4246	Chemical and Allied Products Merchant Wholesalers	X	0.8251	0.8980
4247	Petroleum and Petroleum Products Merchant Wholesalers	X	0.7983	0.9240
4248	Beer, Wine, and Distilled Alcoholic Beverage Merchant Wholesalers	X	0.8297	0.8549
4249	Miscellaneous Nondurable Goods Merchant Wholesalers	X	0.8179	0.8616
4251	Wholesale Electronic Markets and Agents and Brokers		0.8120	0.9283
4411	Automobile Dealers	X	0.7817	0.5859
4412	Other Motor Vehicle Dealers	X	0.7867	0.9260
4421	Furniture Stores	X	0.8022	0.9102
4422	Home Furnishings Stores	X	0.7864	0.9017
4431	Electronics and Appliance Stores	X	0.7715	0.9047
4441	Building Material and Supplies Dealers	X	0.7792	0.9340
4442	Lawn and Garden Equipment and Supplies Stores	X	0.7572	0.6932

Table 8: Compatibility Index and Desirability Index Scores - All Industries

NAICS4	Description	Existing	DI	CI
4451	Grocery Stores	X	0.7595	0.8865
4452	Specialty Food Stores	X	0.7636	0.9103
4461	Health and Personal Care Stores	X	0.7709	0.8958
4481	Clothing Stores	X	0.7521	0.9280
4482	Shoe Stores	X	0.7661	0.8951
4483	Jewelry, Luggage, and Leather Goods Stores	X	0.7279	0.8715
4511	Sporting Goods, Hobby, and Musical Instrument Stores	X	0.7715	0.9339
4512	Book Stores and News Dealers	X	0.7720	0.9361
4523	General Merchandise Stores, including Warehouse Clubs and Supercenters	X	0.7281	0.8941
4531	Florists	X	0.7437	0.9296
4533	Used Merchandise Stores	X	0.7596	0.9554
4539	Other Miscellaneous Store Retailers	X	0.7324	0.9034
4541	Electronic Shopping and Mail-Order Houses	X	0.7711	0.8938
4542	Vending Machine Operators	X	0.7608	0.9258
4543	Direct Selling Establishments	X	0.7493	0.9312
4811	Scheduled Air Transportation	X	0.8755	0.8126
4812	Nonscheduled Air Transportation	X	0.8649	0.8639
4821	Rail Transportation	X	0.8379	0.9109
4832	Inland Water Transportation	X	0.8381	0.9289
4841	General Freight Trucking	X	0.8192	0.8564
4851	Urban Transit Systems	X	0.7303	0.9057
4852	Interurban and Rural Bus Transportation	X	0.7502	0.9280
4853	Taxi and Limousine Service	X	0.7537	0.9887
4855	Charter Bus Industry	X	0.7320	0.9359
4859	Other Transit and Ground Passenger Transportation	X	0.7539	0.9216
4861	Pipeline Transportation of Crude Oil	X	1.0000	0.9773
4862	Pipeline Transportation of Natural Gas	X	0.9691	0.8184
4869	Other Pipeline Transportation	X	0.9970	0.8824
4871	Scenic and Sightseeing Transportation, Land	X	0.8286	0.8902
4872	Scenic and Sightseeing Transportation, Water	X	0.8435	0.9315
4879	Scenic and Sightseeing Transportation, Other	X	0.8392	0.8880
4881	Support Activities for Air Transportation	X	0.8189	0.6502
4882	Support Activities for Rail Transportation	X	0.8554	0.9049
4883	Support Activities for Water Transportation	X	0.8464	0.9090
4885	Freight Transportation Arrangement	X	0.8324	0.7441
4889	Other Support Activities for Transportation	X	0.8135	0.8617
4921	Couriers and Express Delivery Services	X	0.7668	0.9328
4922	Local Messengers and Local Delivery	X	0.8011	0.9456
4931	Warehousing and Storage	X	0.8114	0.6867
5111	Newspaper, Periodical, Book, and Directory Publishers	X	0.8316	0.8894
5112	Software Publishers		0.9046	0.9211
5121	Motion Picture and Video Industries	X	0.7939	0.8660
5122	Sound Recording Industries	X	0.7713	0.9330
5151	Radio and Television Broadcasting	X	0.8252	0.9370
5152	Cable and Other Subscription Programming		0.9266	0.8517
5173	Wired and Wireless Telecommunications Carriers	X	0.7776	0.9148
5179	Other Telecommunications		0.8698	0.9342
5182	Data Processing, Hosting, and Related Services	X	0.8351	0.9397
5191	Other Information Services	X	0.7934	0.9253

Table 8: Compatibility Index and Desirability Index Scores - All Industries

NAICS4	Description	Existing	DI	CI
5221	Depository Credit Intermediation	X	0.8117	0.8856
5222	Nondepository Credit Intermediation	X	0.8213	0.9119
5223	Activities Related to Credit Intermediation	X	0.8274	0.9258
5231	Securities and Commodity Contracts Intermediation and Brokerage		0.8815	0.9197
5232	Securities and Commodity Exchanges		0.8748	0.9335
5239	Other Financial Investment Activities	X	0.7965	0.8931
5241	Insurance Carriers	X	0.8737	0.9470
5242	Agencies, Brokerages, and Other Insurance Related Activities	X	0.8577	0.9003
5251	Insurance and Employee Benefit Funds	X	0.7528	0.9184
5259	Other Investment Pools and Funds	X	0.7474	0.8989
5311	Lessors of Real Estate	X	0.7732	0.9024
5312	Offices of Real Estate Agents and Brokers	X	0.7584	0.8998
5313	Activities Related to Real Estate	X	0.7715	0.9304
5321	Automotive Equipment Rental and Leasing	X	0.8319	0.8921
5322	Consumer Goods Rental	X	0.7994	0.8979
5323	General Rental Centers	X	0.7819	0.8938
5331	Lessors of Nonfinancial Intangible Assets (except Copyrighted Works)	X	0.8766	0.9209
5411	Legal Services	X	0.8030	0.9340
5412	Accounting, Tax Preparation, Bookkeeping, and Payroll Services	X	0.8221	0.9429
5413	Architectural, Engineering, and Related Services	X	0.8205	0.8504
5414	Specialized Design Services		0.8417	0.8763
5415	Computer Systems Design and Related Services	X	0.8268	0.8345
5416	Management, Scientific, and Technical Consulting Services	X	0.8264	0.8860
5417	Scientific Research and Development Services	X	0.8694	0.8632
5418	Advertising, Public Relations, and Related Services	X	0.8127	0.8462
5419	Other Professional, Scientific, and Technical Services	X	0.8323	0.9116
5511	Management of Companies and Enterprises	X	0.8603	0.8999
5611	Office Administrative Services	X	0.7516	0.9140
5613	Employment Services	X	0.7549	0.9158
5614	Business Support Services	X	0.7518	0.9140
5615	Travel Arrangement and Reservation Services		0.8148	0.8978
5616	Investigation and Security Services		0.7761	0.9196
5617	Services to Buildings and Dwellings	X	0.7424	0.9899
5619	Other Support Services	X	0.7696	0.9275
5621	Waste Collection	X	0.6346	0.9305
5622	Waste Treatment and Disposal	X	0.7844	0.8974
5629	Remediation and Other Waste Management Services	X	0.8020	0.9109
6111	Elementary and Secondary Schools	X	0.7398	0.9070
6112	Junior Colleges		0.8180	0.8833
6113	Colleges, Universities, and Professional Schools		0.8511	0.9270
6114	Business Schools and Computer and Management Training	X	0.7442	0.9429
6115	Technical and Trade Schools	X	0.7241	0.8747
6116	Other Schools and Instruction	X	0.7375	0.9400
6117	Educational Support Services	X	0.7387	0.7696
6212	Offices of Dentists	X	0.7572	0.9099
6214	Outpatient Care Centers	X	0.8434	0.8451
6215	Medical and Diagnostic Laboratories	X	0.8260	0.8912
6216	Home Health Care Services	X	0.7534	0.9181
6231	Nursing Care Facilities (Skilled Nursing Facilities)	X	0.7638	0.8191

Table 8: Compatibility Index and Desirability Index Scores - All Industries

NAICS4	Description	Existing	DI	CI
6232	Residential Intellectual and Developmental Disability, Mental Health, and Substance Abuse Fac	X	0.7613	0.9087
6233	Continuing Care Retirement Communities and Assisted Living Facilities for the Elderly	X	0.7649	0.8545
6239	Other Residential Care Facilities	X	0.7578	0.7627
6241	Individual and Family Services	X	0.7283	0.9318
6242	Community Food and Housing, and Emergency and Other Relief Services	X	0.6417	0.9083
6243	Vocational Rehabilitation Services	X	0.7155	0.9024
6244	Child Day Care Services	X	0.7532	0.9088
7112	Spectator Sports		0.7913	0.9171
7113	Promoters of Performing Arts, Sports, and Similar Events		0.7932	0.9082
7114	Agents and Managers for Artists, Athletes, Entertainers, and Other Public Figures		0.8241	0.8967
7121	Museums, Historical Sites, and Similar Institutions		0.7798	0.2908
7131	Amusement Parks and Arcades		0.7590	0.9022
7139	Other Amusement and Recreation Industries	X	0.7470	0.9286
7212	RV (Recreational Vehicle) Parks and Recreational Camps	X	0.7846	0.9181
7213	Rooming and Boarding Houses, Dormitories, and Workers' Camps	X	0.8036	0.9126
7223	Special Food Services	X	0.7501	0.8315
7225	Restaurants and Other Eating Places	X	0.7345	0.8906
8112	Electronic and Precision Equipment Repair and Maintenance	X	0.7285	0.9288
8113	Commercial and Industrial Machinery and Equipment (except Automotive and Electronic) Repa	X	0.7706	0.9260
8114	Personal and Household Goods Repair and Maintenance	X	0.7516	0.9216
8121	Personal Care Services	X	0.7610	0.9179
8122	Death Care Services	X	0.7563	0.9177
8123	Drycleaning and Laundry Services		0.7869	0.8876
8129	Other Personal Services	X	0.7363	0.9122
8131	Religious Organizations	X	0.7630	0.9736
8132	Grantmaking and Giving Services	X	0.8027	0.9359
8133	Social Advocacy Organizations	X	0.8031	0.8481
8134	Civic and Social Organizations	X	0.7535	0.9796
8139	Business, Professional, Labor, Political, and Similar Organizations	X	0.8076	0.9258
9261	Administration of Economic Programs		0.7439	0.9155